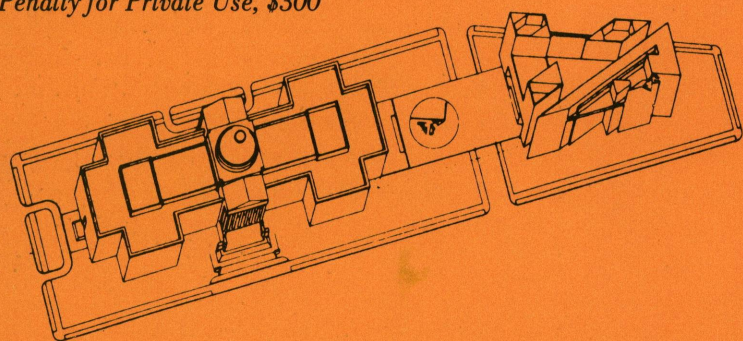


# National Gallery of Art

Washington, D.C. 20565

Official Business  
Penalty for Private Use, \$300



CALENDAR OF EVENTS

October 1981

**MONDAY,  
September 28  
through  
SUNDAY,  
October 4**



## Tours and Paintings of the Week

*Worldly Pleasures:  
Food in Art*  
Tues. through Sat. 1:00  
Sun. 2:30  
West Building  
Rotunda

Hans Holbein the Younger  
*Edward VI as a Child*  
(Andrew W. Mellon  
Collection)  
Tues. through Sat. 12:00  
& 2:00; Sun. 3:30 & 6:00  
West Building  
Gallery 35A

## Introductory Tours

*Introduction to the East  
Building's Collection*  
Mon. through Sat. 11:00  
Sun. 1:00  
East Building  
Ground Floor Lobby

*Introduction to the West  
Building's Collection*  
Mon. through Sat. 3:00  
Sun. 5:00  
West Building  
Rotunda

## Films

*The Powers That Be  
(The Shock of the New,  
part two—52 min.)*  
Tues. through Sat. 12:30  
Sun. 1:00

East Building  
Auditorium

## Sunday Lectures

*American Still-Life  
Paintings in the  
Ganz Collection*

*Speaker:*  
John Wilmerding  
Curator of American Art  
and Senior Curator  
National Gallery of Art

Sunday 4:00

East Building  
Auditorium

## Sunday Concerts

National Gallery Orchestra  
Richard Bales, *Conductor*

West Building  
East Garden Court 7:00



**MONDAY,  
October 5  
through  
SUNDAY,  
October 11**



*Worldly Pleasures:  
Gardens in Art*  
Tues. through Sat. 1:00  
Sun. 2:30  
West Building  
Rotunda

Bacchiacca  
*The Gathering of Manna*  
(Samuel H. Kress  
Collection)  
Tues. through Sat. 12:00  
& 2:00; Sun. 3:30 & 6:00  
West Building  
Gallery 10

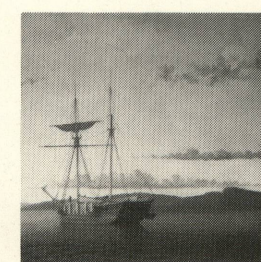
*Introduction to the East  
Building's Collection*  
Mon. through Sat. 11:00  
Sun. 1:00  
East Building  
Ground Floor Lobby

*Introduction to the West  
Building's Collection*  
Mon. through Sat. 3:00  
Sun. 5:00  
West Building  
Rotunda

*The Landscape of Pleasure  
(The Shock of the New,  
part three—52 min.)*  
Tues. through Sat. 12:30  
Sun. 1:00

*American Light:  
The Luminist Movement*  
(30 min.)  
Tues. through Sat. 2:30

East Building  
Auditorium



*American Figure Paintings  
and Sculpture in the  
Ganz Collection*

*Speaker:*  
Linda Ayres  
Assistant Curator of  
American Art  
National Gallery of Art

Sunday 4:00

East Building  
Auditorium

The Burdette Trio  
Kevin Lawrence, *Violinist*  
Robert Cafaro, *Cellist*  
Jungeun Kim, *Pianist*

West Building  
East Garden Court 7:00

**MONDAY,  
October 12  
through  
SUNDAY,  
October 18**



*Worldly Pleasures:  
Music in Art*  
Tues. through Sat. 1:00  
Sun. 2:30  
West Building  
Rotunda

Mary Cassatt  
*Little Girl in a  
Blue Armchair*  
(Lent by Mr. & Mrs.  
Paul Mellon)  
Tues. through Sat. 12:00  
& 2:00; Sun. 3:30 & 6:00  
West Building  
Gallery 72

*Introduction to the East  
Building's Collection*  
Mon. through Sat. 11:00  
Sun. 1:00  
East Building  
Ground Floor Lobby

*Introduction to the West  
Building's Collection*  
Mon. (Columbus Day) 1:00  
Mon. through Sat. 3:00  
Sun. 5:00  
West Building  
Rotunda

*Trouble in Utopia  
(The Shock of the New,  
part four—52 min.)*  
Tues. through Sat. 12:30  
Sun. 1:00

*American Light:  
The Luminist Movement*  
(30 min.)  
Tues. through Sat. 2:30

East Building  
Auditorium

*American Landscape  
Paintings in the  
Ganz Collection*

*Speaker:*  
Earl A. Powell, III  
Director  
Los Angeles County  
Museum of Art  
Los Angeles

Sunday 4:00

East Building  
Auditorium

Ethan Sloane, *Clarinetist*  
Daniel Saunders, *Pianist*

West Building  
East Garden Court 7:00

**MONDAY,  
October 19  
through  
SUNDAY,  
October 25**



*Worldly Pleasures:  
Costume in Art*  
Tues. through Sat. 1:00  
Sun. 2:30  
West Building  
Rotunda

Amedeo Modigliani  
*Gypsy Woman with Baby*  
(Chester Dale Collection)  
Tues. through Sat. 12:00  
& 2:00; Sun. 3:30 & 6:00  
East Building  
Upper level

*Introduction to the East  
Building's Collection*  
Mon. through Sat. 11:00  
Sun. 1:00  
East Building  
Ground Floor Lobby

*Introduction to the West  
Building's Collection*  
Mon. through Sat. 3:00  
Sun. 5:00  
West Building  
Rotunda

*The Threshold of Liberty  
(The Shock of the New,  
part five—52 min.)*  
Tues. through Sat. 12:30  
Sun. 1:00

*American Light:  
The Luminist Movement*  
(30 min.)  
Tues. through Sat. 2:30

East Building  
Auditorium

*Picasso, October 25, 1881-  
October 25, 1981*

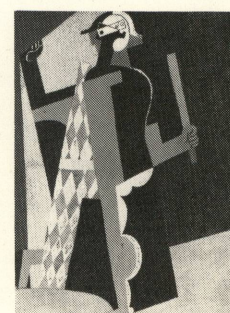
*Speaker:*  
Robert Rosenblum  
Professor of Fine Arts  
Institute of Fine Arts  
New York University  
New York

Sunday 4:00

East Building  
Auditorium

National Gallery Orchestra  
Richard Bales, *Conductor*  
(Howard Hanson  
Memorial Concert)

West Building  
East Garden Court 7:00



# National Gallery of Art

Washington, D.C. 20565

The telephone number for general information is (202) 737-4215.

The Gallery is located between 3rd and 7th Streets, Northwest, on Constitution Avenue. The East and West Buildings are connected by an all-weather underground passage with a moving walkway. Entrances to the West Building are on the Mall, on Constitution Avenue at 6th Street, which has a ramp for the handicapped, and off 4th Street. The entrance to the East Building is on 4th Street off National Gallery Plaza and also has a ramp for the handicapped.

**Gallery Hours:** The Gallery is open 10 a.m. to 5 p.m. Monday through Saturday. Sunday hours remain the same throughout the year: 12 noon to 9 p.m.

## EXHIBITIONS

October 1981

### An American Perspective: Nineteenth-Century Art from the Collection of Jo Ann and Julian Ganz, Jr.

October 4, 1981, through  
January 31, 1982  
Upper level  
East Building

On view are 101 paintings, drawings, watercolors, pastels, and neoclassical sculpture from this Los Angeles collection, considered the finest private holding of 19th-century American art.

The Ganz collection ranges from the still lifes of Raphaelle Peale, William Harnett, Severin Roesen, and John F. Peto and from the landscapes of Thomas Cole, Sanford Gifford, Frederic Church, Albert Bierstadt, and John F. Kensett to the figure paintings of John Singleton Copley, Thomas Sully, J. G. Brown, Eastman Johnson, Winslow Homer, and John Singer Sargent.



*The Artist Sketching at Mount  
Desert, Maine (detail).* GIFFORD  
Jo Ann and Julian Ganz, Jr.

The exhibition has been organized by John Wilmerding, curator of American art and senior curator at the National Gallery. Accompanying the exhibition is a fully illustrated catalogue with essays by Mr. Wilmerding (on still lifes), Linda Ayres, assistant curator of American art (on figure painting and sculpture), and Earl A. Powell, III, director of the Los Angeles County Museum of Art (on landscapes).

The exhibition will travel to the Amon Carter Museum, Fort Worth, and the Los Angeles County Museum of Art.

**Lectures:** Lectures delivered on the first three Sundays of the month will focus on particular themes within the collection. Mr. Wilmerding, Ms. Ayres, and Mr. Powell will be the speakers. (Check listings for details.)

### Cubist Prints

October 18, 1981, through  
January 3, 1982  
Ground level  
East Building

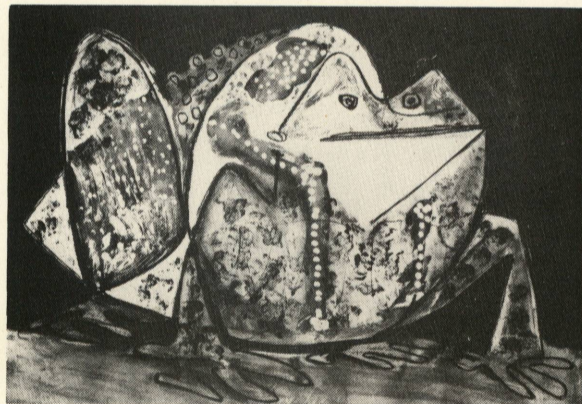


*Rénée as Seen Full Face (detail)*  
VILLON  
National Gallery of Art  
Ailsa Mellon Bruce Fund

The first comprehensive survey of Cubist prints is offered in this exhibition. On view are 150 etchings, lithographs, pochoirs, and illustrated books from French and American collections. Works in the exhibition date from 1908 through the mid-1930s including examples by Georges Braque, Pablo Picasso, Jacques Villon, and Louis Marcoussis. The exhibition has been organized by Burr E. Wallen, Assistant Professor of Art History at the University of California at Santa Barbara.

### The Morton G. Neumann Family Collection: Picasso Prints and Drawings

October 25, 1981, through  
January 24, 1982  
Mezzanine level  
East Building



*The Toad.* PICASSO  
The Morton G. Neumann Family Collection

A survey of 100 outstanding graphics by Pablo Picasso from 1904 to 1968, this selection from the Morton G. Neumann Family Collection illustrates the full range of Picasso's stylistic explorations as well as his mastery of various printmaking techniques. Organized by E. A. Carmean, Jr., curator of twentieth-century art, the exhibition includes drawings, lithographs, etchings, engravings on linoleum, aquatints, and examples in other media. It opens on the one-hundredth anniversary of Picasso's birth.

**Lecture:** Professor Robert Rosenblum will speak on Picasso's birthday, October 25, at 4 p.m.

### Rodin Rediscovered

Through January 31, 1982  
East Building



*The Gates of Hell.* RODIN  
B. G. Cantor Collections

This exhibition is the largest ever devoted to the art of the great French sculptor Auguste Rodin (1840-1917). Almost 400 examples of sculpture, drawings, and photographs are arranged in ten thematic sections. The exhibition begins on the Upper level with a re-creation of a Paris sculpture salon of the 1870s. The visitor should then proceed downward to the Mezzanine, Ground, and Concourse levels.

A fully illustrated catalogue containing 14 essays reexamining various aspects of Rodin's career and production accompanies the exhibition.

The exhibition has been made possible by generous support from the IBM Corporation.

### The Four Moments of the Sun: Kongo Art in Two Worlds

Through January 17, 1982  
Ground floor  
East Building



*Diboondo*  
Institut des Musées Nationaux  
du Zaïre, Kinshasa

Devoted to the funerary art of the central African civilization of Kongo, this exhibition offers 58 examples of Kongo sculpture. Included are works in stone and terra cotta, as well as cloth-covered mannequins, wood statuary, and life-sized sculpture used as funeral trumpets.

Accompanying the objects are photomurals and texts interpreting the signs, postures, and gestures through which Kongo art fulfills its role as the conveyer of moral inspiration and authority between the worlds of the living and the dead.

A fully illustrated catalogue is published in conjunction with the exhibition.

### Sunday Concerts Begin

7:00 p.m.  
East Garden Court  
West Building



The 40th season of free Sunday evening concerts at the Gallery begins on October 4 with the National Gallery Orchestra, Richard Bales, Conductor. The concerts will continue each Sunday through June. They are broadcast live by WGMS-AM and FM with intermission talks focusing on current special exhibitions and with notes on the music.