



National Gallery of Art

CALENDAR OF EVENTS

August 1986

AUGUST

Monday, July 28
through
Sunday, August 3

Monday, August 4
through
Sunday, August 10

Monday, August 11
through
Sunday, August 17

Monday, August 18
through
Sunday, August 24

Monday, August 25
through
Sunday, August 31

COLLECTION HIGHLIGHTS

Brief gallery talks on a single work of art. Reproductions of the object discussed may be purchased in the Gallery's sales shops; a brief text is also available without charge.

Tuesday through Saturday 12:00 p.m.
Sunday 2:00 p.m.

July 29-August 3

Gerrit Willemsz. Heda
Still Life with Ham
(Gift of John S. Thacher)
West Building
Gallery 49



August 5-August 10

Biagio d'Antonio
da Firenze
The Triumph of Camillus
(Samuel H. Kress
Collection)
West Building
Gallery 7



August 12-August 17

Antoine Watteau
Italian Comedians
(Samuel H. Kress
Collection)
West Building
Gallery 54



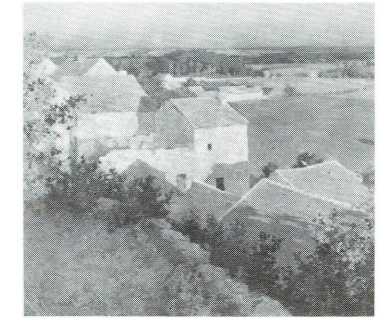
August 19-August 24

Constantin Brancusi
Agnes E. Meyer
(Gift of Eugene
and Agnes Meyer)
East Building
Concourse Level



August 26-August 31

Willard Leroy Metcalf
Midsummer Twilight
(Gift of Admiral Neill
Phillips in memory of
Grace Hendricks Phillips)
West Building
Gallery 70



SPECIAL TOURS

Fifty-minute tours on related works of art.
Tuesday through Saturday 1:00 p.m.
Sunday 2:30 p.m.

July 29-August 3

*Color as Stimulus
and Symbol*
West Building
Rotunda

August 5-August 10

*When Images Speak:
the Depiction of
Historical Life
in German Art*
West Building
Rotunda

August 12-August 17

George Inness
West Building
Rotunda



August 19-August 24

*Gifts to the Nation:
Selected Acquisitions from
the Collections of Mr. and
Mrs. Paul Mellon*
West Building
Rotunda

George Inness,
Pine Brook, N.J., 1870
Collection of Mr. Thomas Colville

August 26-August 31

*American Naive Paintings
from the Collection of
Edgar William and Bernice
Chrysler Garbisch*
East Building
Ground Floor Lobby

FILMS

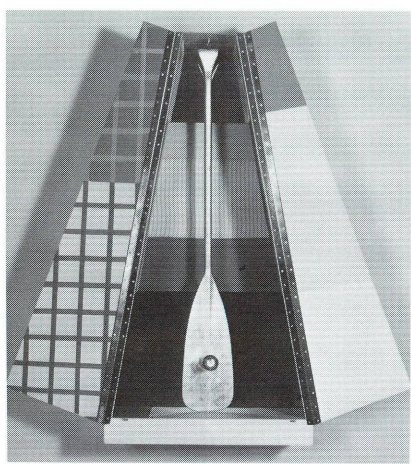
Free films on art and feature films related
to special exhibitions. Unreserved seats are
available on a first-come, first-served basis.
East Building Auditorium

July 30-August 3

The New York School
(55 min.)
Wed. through Sat. 12:30
Sun. 1:00

Style Wars (by Tony Silver
and Henry Chalfant, 1983,
69 min.)
Sat. 2:30

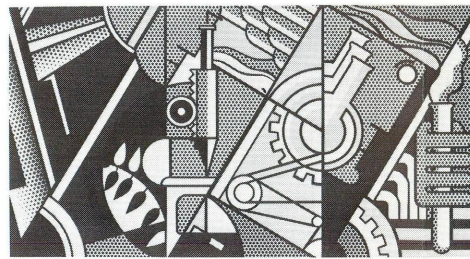
Robert Rauschenberg,
Publicon: Station I, 1978
National Gallery of Art,
Gift of Gemini G.E.L. and
Robert Rauschenberg



August 6-August 10

Barnett Newman (25 min.)
and *Roy Lichtenstein*
(52 min.)
Wed. through Sat. 12:30
Sun. 1:00

Civilisation (episodes 1
and 2, with Kenneth Clark,
100 min.)
Sat. 2:30



August 13-August 17

*Robert Rauschenberg:
Retrospective* (45 min.)
and *Linoleum* (by Robert
Rauschenberg, 1966,
18 min.)
Wed. through Sat. 12:30
Sun. 1:00

Civilisation (episodes 3
and 4, with Kenneth Clark,
100 min.)
Sat. 2:30

Roy Lichtenstein,
Peace Through Chemistry I, 1970
National Gallery of Art,
Gift of Gemini G.E.L. and
Roy Lichtenstein

August 20-August 24

Frank Stella at the Fogg
(22 min.) and
Godzilla Meets Mona Lisa
(30 min.)
Wed. through Sat. 12:30
Sun. 1:00

Civilisation (episodes 5
and 6, with Kenneth Clark,
100 min.)
Sat. 2:30

August 27-August 31

*A New Spirit in Painting:
Six Painters of the 1980s*
(58 min.)
Wed. through Sat. 12:30
Sun. 1:00

Civilisation (episodes 7
and 8, with Kenneth Clark,
100 min.)
Sat. 2:30

SUNDAY LECTURES

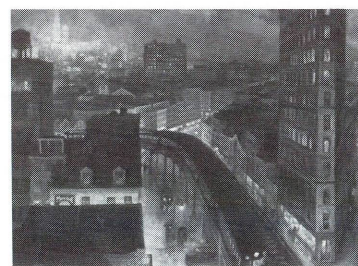
Free lectures given by members of the
Education Department. No registration is
needed but seating is limited.

Sunday 4:00 p.m.
East Building Auditorium

August 3

*Celebrated Cities:
New York*

Donna Mann
Lecturer
National Gallery of Art



August 10

*Celebrated Cities:
Kyoto*

Elizabeth Eder
Lecturer
National Gallery of Art

August 17

*Celebrated Cities:
Beijing*

Betsie Gross
Lecturer
National Gallery of Art

August 24

*Celebrated Cities:
Siena*

Susan M. Arensberg
Lecturer
National Gallery of Art

August 31

*Celebrated Cities:
Berlin*

Christopher B. With
Lecturer
National Gallery of Art

John Sloan, *The City from
Greenwich Village*, 1922
National Gallery of Art,
Gift of Helen Farr Sloan

National Gallery of Art

Director's Tour

A recorded tour of the West Building collections, by J. Carter Brown, Director of the National Gallery of Art, is available at the West Building Rotunda.

Sunday Concerts

There will be no Sunday evening concerts during August and September. The 45th Season will begin on Sunday, October 5, at 7:00 p.m. with a concert by the National Gallery Orchestra.



National Gallery of Art, West Building Rotunda

"Learning To Look" Discussion Group

What does an artist do? How does art work? How did the artist make it? These and other questions will be dealt with in relation to the sculptor's creative process. Comfortably seated around one or two objects from the permanent collection, participants will be encouraged by a staff member from the Education Department to discuss ways in which sculptors use the materials at their disposal to elicit visual responses.

Space is limited; to enroll, call the Education Department at 842-6246.

Sculpture Discussion Group:

12:30 p.m. Thursdays, August 14, 21, 28

INTRODUCTORY TOURS

Introduction to the East Building Collections

Monday through Saturday 11:00 a.m.
Sunday 1:00 p.m.
East Building, Ground Floor Lobby

Introduction to the West Building Collections

Monday through Saturday 3:00 p.m.
Sunday 5:00 p.m.
West Building, Rotunda

FROM THE GALLERY'S PERMANENT COLLECTION

American Naïve Paintings

East Building
Ground Floor

This installation of more than 70 works from the National Gallery of Art's permanent collection includes selections from the Edgar William and Bernice Chrysler Garbisch Collection, many of which are on view at the Gallery for the first time in ten years. Virtually all of the objects in the exhibition, including portraits, still lifes, landscapes, decorated birth certificates, and other family records, were created by artists with little or no formal training. Each work is distinguished by a striking quality of design and sensitivity to the character of the subject.

The installation, including two rooms devoted to works on paper, also features objects frequently shown at the National Gallery. Other American naïve paintings from the Garbisch Collection are currently being circulated on a national tour.

American Naïve Paintings will remain on view on the East Building's Ground Floor through the late fall, 1986.

Recent Acquisitions in the Graphic Arts Collection

Through September 7, 1986
West Building
Ground Floor

In 1983 the National Gallery's West Building exhibition space was expanded with the renovation of the Ground Floor Galleries. The new rooms provide areas for a rotating survey of the Gallery's permanent collection of graphic arts.

Currently on view through September 7 is a selection of recent acquisitions, representing a diverse group of European and American prints and drawings from the 15th through the 20th centuries. Included are works by Albrecht Dürer, Rembrandt van Rijn, Edgar Degas, Winslow Homer, Robert Rauschenberg, and David Hockney.

OPENING EXHIBITION

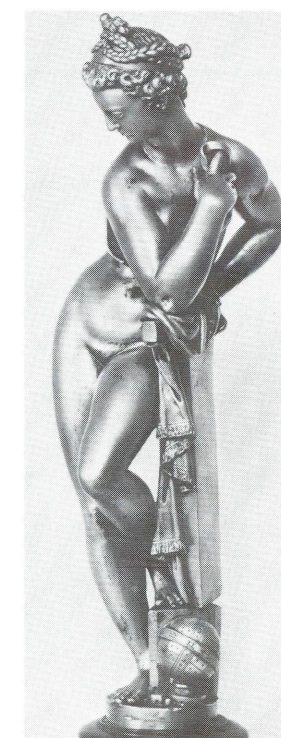
Renaissance Master Bronzes from the Kunsthistorisches Museum, Vienna

August 17-November 30, 1986
East Building
Mezzanine

Seventy-five Italian and northern European bronzes of the 15th to the mid-17th centuries, selected from one of the world's greatest collections at the Kunsthistorisches Museum, Vienna, will go on view at the National Gallery August 17-November 30, 1986.

These small sculptures, including works by such artists as Filarete, Riccio, Antico, and Giambologna, include artistic renderings of ancient heroes, myths, nature, and religious themes; some of them also serve as utilitarian objects, such as inkwells, lamps, and containers for blotting sand. The works in the exhibition are evocative of ancient prototypes which were unearthed in Italy in considerable quantity during the 15th and 16th centuries. Represented in the collection are bronzes from the major Renaissance artistic centers of Florence, Padua, Mantua, Venice, and Nuremberg.

The exhibition has been organized in cooperation with the Smithsonian Institution Traveling Exhibition Service (SITES). The selection has been made by Manfred Leithe-



Giovanni Bologna, *Venus Urania*, second half 16th century
Kunsthistorisches Museum, Vienna

Jasper, head of the sculpture and decorative arts department, Kunsthistorisches Museum, and by Douglas Lewis, curator of sculpture at the National Gallery of Art, who have both contributed to the fully illustrated scholarly catalogue.

In its Washington showing, the exhibition has been supported by Republic National Bank and Banco Safra, S.A., Brazil.

CONTINUING EXHIBITION

Gifts to the Nation: Selected Acquisitions from the Collections of Mr. and Mrs. Paul Mellon

Through October 19, 1986
West Building
Main Floor

This exhibition, held in honor of Mr. and Mrs. Paul Mellon, discerning collectors whose generosity has helped establish the National Gallery of Art as one of the world's great museums of American and European art, remains open in the West Building's Main Floor Galleries through October 19.

Many of the works on view are part of their recent gift of French impressionist and post-impressionist paintings, drawings, watercolors, and prints, as well as American paintings. Some of the works in the exhibition, including Matisse's *Still Life with Sleeping Woman*, Monet's *Cliffs at Pourville*, Picasso's *The Cup of Coffee*, and Degas' *Woman Viewed from Behind* have rarely, if ever, been seen at the National Gallery. Others are among the best-loved and most familiar paintings in the National Gallery's collection, such as Bazille's *Negro Girl with Peonies*, Cézanne's *The Artist's Father*, Cassatt's *Child in a Straw Hat*, Wright of Derby's *Corinthian Maid*, and Gauguin's *Breton Girls Dancing, Pont-Aven*.

The exhibition also features paintings, watercolors, and prints by the American artists Homer, Bellows, and Eakins. British artists represented are Hogarth, Zoffany, and Constable, along with French masters Pissarro, Seurat, and Renoir.

Paul Gauguin, *Breton Girls Dancing, Pont-Aven*, 1888
National Gallery of Art,
Collection of Mr. and Mrs. Paul Mellon



Paul Cézanne, *Harlequin*, 1888/1890
National Gallery of Art,
Collection of Mr. and Mrs. Paul Mellon



CONTINUING EXHIBITIONS

Baroque Paintings from the John and Mable Ringling Museum of Art

Through September 29, 1986
West Building
Main Floor

The John and Mable Ringling Museum of Art, containing one of America's foremost collections of baroque paintings, is celebrating its 40th anniversary of ownership by the state of Florida. To commemorate this occasion, a group of 33 works by Italian, French, Dutch, and Flemish masters is on view in the West Building's Main Floor Galleries through September 29, 1986.

Formed chiefly during the 1920s by John Ringling, the famous circus entrepreneur, and his wife, Mable Burton Ringling, and housed in a lavish villa derived from antique and 15th-century Italian prototypes, the Ringling Museum collection is exceptional in both quality and number.

George Inness

Through September 7, 1986
West Building
Ground Floor

The first national retrospective of the highly influential 19th-century American landscape painter, *George Inness*, highlights the artist's work from his assimilation of French Barbizon landscape art in the early 1850s to his development of a personal artistic language.

Frequently (although erroneously) associated with Hudson River School paintings, George Inness' landscapes are characterized by an intimate and atmospheric quality that makes his style unique in the late 19th century. During his lifetime, Inness' pictures achieved enormous popularity, but the artist's reputation declined after his death in 1894. In recent years his status as one of America's premier landscape painters has been reaffirmed, culminating in this exhibition which has recently been seen in four other U.S. cities.

George Inness developed a highly expressive style of painting which he used to evoke emotion from the viewer. The aim of art, he wrote, "is not to instruct, not to edify, but to awaken an emotion."

Seven American Masters

East Building
Upper Level

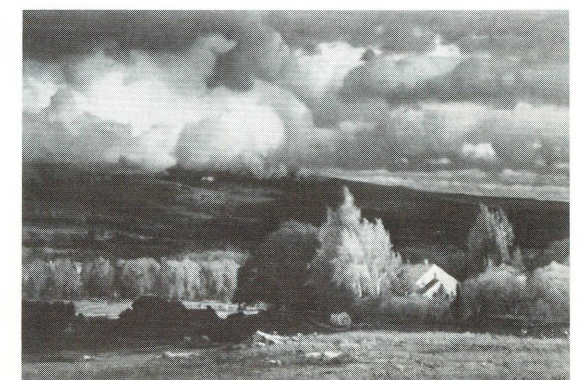
Seven American Masters is an installation of the work of seven painters of two generations central to the development of American art of the last forty years. It draws upon a large number of important and rarely exhibited paintings on loan as well as selections from the collections of the National Gallery of Art. The work of these painters is presented in a series of individual rooms.

Barnett Newman (1905-1970) and Mark Rothko (1903-1970) were founders of the color-field branch of abstract expressionism. Each is represented by a cycle of closely related paintings that create a unified environment: Newman by the *Stations of the Cross*, a series of fifteen paintings on loan to the Gallery from the artist's widow,



Bernardo Strozzi, *An Act of Mercy*
John and Mable Ringling Museum of Art

The exhibition was selected by Anthony F. Janson, chief curator of the Ringling Museum, and includes works by Bernardo Strozzi, Giovanni Paolo Panini, Salvator Rosa, Nicolas Poussin, Simon Vouet, Anthony van Dyck, Peter Paul Rubens, Willem van Aelst, Frans Hals, and Jan Davidsz. de Heem.



George Inness, *Approaching Storm*, 1869
Collection of Mr. and Mrs. Frederick R. Mayer

The exhibition highlights some of Inness' greatest works, including *The Lackawanna Valley* (1855), *Clearing Up* (c. 1860), *The Coming Storm* (1879), and *Sundown* (1894).

This selection of paintings has been taken from the larger exhibition organized by Michael Quick, curator of American art, Los Angeles County Museum of Art. Nicolai Cikovsky, Jr., curator of American art, National Gallery of Art, has coordinated the exhibition in its Washington showing.

A recorded tour of the exhibition, narrated by Nicolai Cikovsky, Jr., is available at the entrance to the show.

Annalee Newman, and Rothko by six paintings known as *The Seagram Murals*. The diversity of style among the succeeding generation is represented by the work of Al Held (born 1923), Jasper Johns (born 1930), Ellsworth Kelly (born 1923), Roy Lichtenstein (born 1923), and Robert Rauschenberg (born 1925). Each is shown in a series of concentrated overviews, which span the course of these artists' careers from their beginnings to the present. Other significant American art of this period from the collections of the National Gallery is installed on the Mezzanine and on the Concourse.

The installation will remain on view indefinitely.

GENERAL INFORMATION

NATIONAL GALLERY OF ART

Washington, D.C. 20565

The telephone number for general information is 202-737-4215.

To change your mailing address for the Calendar of Events, please mail a copy of your new address to the Information Office, National Gallery of Art, Washington, D.C. 20565, taking care to include the mailing label from your last Calendar of Events.

GALLERY HOURS:

Monday through Saturday 10:00 a.m. to 5:00 p.m.

Sunday noon to 9:00 p.m.

The Gallery is located between 3rd and 7th Streets, N.W., on Constitution Avenue. The East and West Buildings are connected by an all-weather underground passage with a moving walkway. Entrances to the West Building are on the Mall, on 7th Street, on Constitution Avenue at 6th Street, which has a ramp for the handicapped, and off 4th Street. The entrance to the East Building is on 4th Street off National Gallery Plaza and also has a ramp for the handicapped.

RESTAURANTS

Four restaurants offer luncheon and light snacks throughout the year. Monday through Saturday, hours of operation are:

Terrace Café: 11:00 to 4:30

Café/Buffer: 10:00 to 3:30

Cascade Café: 11:00 to 3:30

Garden Café: 11:00 to 4:30

Sunday hours are noon to 6:00 p.m. for the Terrace Café, Café/Buffer, and Garden Café; noon to 4:30 p.m. for the Cascade Café.

COVER: North Italy (probably Paduan), *Inkwell in the form of a Crab*, early 16th century
Kunsthistorisches Museum, Vienna