



**National Gallery of Art**

---

**CALENDAR OF EVENTS**

*December 1986*

# DECEMBER

**Monday, December 1  
through  
Sunday, December 7**

**Monday, December 8  
through  
Sunday, December 14**

**Monday, December 15  
through  
Sunday, December 21**

**Monday, December 22  
through  
Sunday, December 28**

## COLLECTION HIGHLIGHTS

Brief gallery talks by Education Department lecturers on a single work of art. Reproductions of the work discussed may be purchased in the Gallery's sales shops; a written text is available without charge.

Tuesday through Saturday 12:00 p.m.  
Sunday 2:00 p.m.

December 2-December 7

Rembrandt van Rijn  
*Lucretia*  
(Andrew W. Mellon  
Collection)  
West Building, Gallery 47



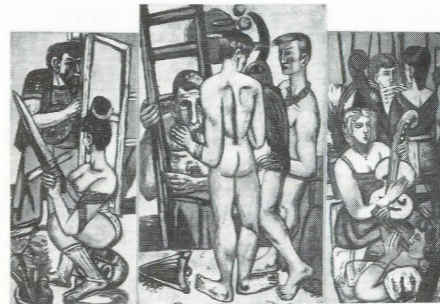
December 9-December 14

Edmund Charles Tarbell  
*Mother and Mary*  
(Gift of the Belcher  
Collection, Stoughton  
Massachusetts)  
West Building, Ground  
Floor, Central Gallery



December 16-December 21

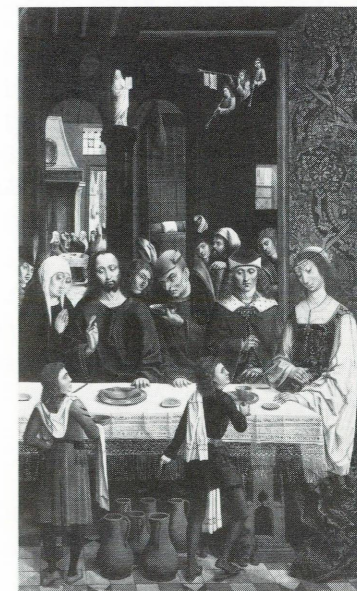
Max Beckmann  
*The Argonauts*  
(Gift of Mrs. Max Beckmann)  
East Building  
Concourse Level



December 23-December 28

Master of the Retable  
of the Reyes Católicos  
*The Marriage at Cana*  
(Samuel H. Kress Collection)  
West Building, Gallery 35

(The Gallery will be closed  
Christmas Day, Dec. 25)



## SPECIAL TOURS

Fifty-minute tours by Education Department lecturers on related works of art.

Monday through Friday 11:00 a.m.

One-hour thematic tours by Education Department lecturers.

Tuesday through Saturday 1:00 p.m.  
Sunday 2:30 p.m.

December 1-December 5

*The Art of the Renaissance*  
West Building, Rotunda

December 2-December 7

*Henri Matisse: The Early  
Years in Nice 1916-1930*  
East Building  
Ground Floor Lobby

December 8-December 12

*Spanish Painting in  
the Collection of the  
National Gallery of Art*  
West Building, Rotunda

December 9-December 14

*Images of Childhood  
in National Gallery  
Paintings*  
West Building, Rotunda

December 15-December 19

*Masters of Flemish  
and Dutch Painting*  
West Building, Rotunda

December 16-December 21

*The Christmas Story in Art*  
West Building, Rotunda

December 22-December 26

*The Painters of France*  
West Building, Rotunda

December 23-December 28

*Introduction to the West  
Building Collections*  
West Building, Rotunda

(The Gallery will be closed  
Christmas Day, Dec. 25)

## FILMS

Free films on art and feature films related to special exhibitions. Unreserved seats are available on a first-come, first-served basis.

East Building Auditorium

December 2-December 7

*Jean Cocteau: Autoportrait  
d'un inconnu* (Edgardo  
Cozarinsky, 1983, 80 min.)  
Wed. through Sat. 12:30  
Sun. 1:00

*Matisse in Nice*  
(National Gallery of Art,  
1986, 30 min.)  
Tues. through Fri. 2:00

*Coeur Fidèle* (Jean Epstein,  
1923, 65 min.) and *Fièvre*  
(Louis Delluc, 1921, 40 min.)  
Sat. 2:30

*An Italian Straw Hat*, 1927, by René  
Clair, to be shown December 20  
(Museum of Modern Art/  
Film Stills Archive)

December 9-December 14

*Jean-Louis Barrault—  
A Man of the Theatre*  
(Helen Gary Bishop,  
1984, 58 min.)  
Wed. through Sat. 12:30  
Sun. 1:00

*Matisse in Nice*  
(National Gallery of Art,  
1986, 30 min.)  
Tues. through Fri. 2:00

*The Fall of the House  
of Usher* (Jean Epstein,  
1928, 62 min.) and  
*The Smiling Madame Beudet*  
(Germaine Dulac, 1923,  
40 min.)  
Sat. 2:30

December 16-December 21

*Mobile*, by Alexander  
Calder (National Gallery  
of Art, 1980, 24 min.)  
and *Calder's Circus*  
(Pathé Cinema, 1961,  
19 min.)  
Wed. through Sat. 12:30  
Sun. 1:00

*Matisse in Nice*  
(National Gallery of Art,  
1986, 30 min.)  
Tues. through Fri. 2:00

*An Italian Straw Hat*  
(René Clair, 1927,  
114 min.) and *Au Secours!*  
(Abel Gance, 1923, 30 min.)  
Sat. 2:30

December 23-December 28

*Henry Moore: Man of Form*  
(CBS, 1965, 28 min.) and  
*Henry Moore at the Tate  
Gallery* (Arts Council of  
Great Britain, 1969, 14 min.)  
Wed., Fri., Sat. 12:30  
Sun. 1:00

*Matisse in Nice*  
(National Gallery of Art,  
1986, 30 min.)  
Tues., Wed., Fri. 2:00

*L'Inhumaine* (Marcel  
L'Herbier, 1923, 132 min.)  
Sat. 2:30



Matisse,  
*Woman in a Flowered Hat*, 1919  
Mr. and Mrs. Herbert J. Klapper,  
New York

## SUNDAY LECTURES

Free lectures given by distinguished visiting scholars. No registration needed but seating is limited.

Sunday 4:00 p.m.  
East Building Auditorium

December 7

*How to Tell the Rainbow  
from the Palette:  
Aristotle Proposed,  
History Disposed*

Charles Parkhurst  
Director  
Graduate Program  
in Art History  
Williams College  
Williamstown  
Massachusetts

December 14

*Vernacular Art:  
Pieter Bruegel*

Larry Silver  
Professor of Art History  
Northwestern University  
Evanston, Illinois

December 21

*Painting in Emilia:  
Thoughts Around an  
Exhibition*

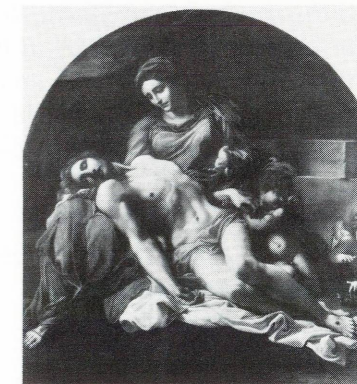
Sydney J. Freedberg  
Chief Curator  
National Gallery of Art

December 28

*Rubens as Impresario*

Charles Scribner, III  
Macmillan Publishing  
Company  
New York, New York

Annibale Carracci, *Pietà*, 1599  
Museo e Gallerie Nazionali  
di Capodimonte, Naples



## SUNDAY CONCERTS

Free concerts by the National Gallery Orchestra, recitalists, and ensembles. Unreserved seats available from 6:00 p.m. All concerts are broadcast live by WGMS 570 AM and 103.5 FM.

Sunday 7:00 p.m.  
West Building, West Garden Court

December 7

Seymour Fink, *Pianist*

Works by Mozart,  
Beethoven, Janacek, and  
Chopin

December 14

Jon Lackey, *Tenor*  
James Jelasic, *Pianist*

Works by Ravel, Poulenc,  
Debussy, Marx, Beethoven,  
and Rachmaninoff

December 21

UMBC Camerata

Christmas Program

December 28

National Gallery Orchestra  
George Manos, *Conductor*

Traditional New Year  
Gala Program  
Music of Vienna

# National Gallery of Art

## A History of Western Art, Part I

In December, Part I of *A History of Western Art* comes to a close. Part II will be offered in spring 1987. The free slide lectures are given on Tuesdays at 12:30 p.m. and repeated on Saturdays at 11:00 a.m. in the East Building Auditorium. No reservations are required, but space is limited.

- December 2, 6 *The Italian Renaissance of the Fifteenth Century*
- December 9, 13 *The High Renaissance*
- December 16, 20 *Mannerism*

## Family Programs

The Education Department continues its series of programs for families with children ages 6 to 12. Highlighted this month is a short film, "The Story of Christmas," and a tour of Christmas paintings in the National Gallery's collection. Participants are asked to meet in the West Building Auditorium at 10:00 a.m. each Saturday morning for the free program which lasts an hour and a half. Children must be accompanied by an adult. Please call 842-6249 for reservations.

## TOURS AND FILMS

### Introduction to the East Building Collections

Monday through Saturday 11:00 a.m.  
Sunday 1:00 p.m.  
East Building, Ground Floor Lobby

### Introduction to the West Building Collections

Monday through Saturday 3:00 p.m.  
Sunday 5:00 p.m.  
West Building, Rotunda

### Foreign Language Tours

Regularly scheduled foreign language tours of the West Building are offered on Tuesdays beginning at noon in the Rotunda. The December schedule is as follows:

- December 2 *French*
- December 9 *Spanish*
- December 16 *German*
- December 23 *Italian*

### Film Series: French Avant-Garde Films of the 1920s

In the 1920s, filmmakers in France were experimenting with new forms that had a profound effect on the development of narrative cinema. These experiments paralleled the modernist movement in painting, and many of the early filmmakers were actually painters themselves. This series, presented on consecutive Saturdays in December, consists of four feature and three short films that illustrate the stylistic concerns of the French narrative film avant-garde. All films are silent with piano accompaniment by Ray Brubacher. See reverse side for titles and times.

## SPECIAL INSTALLATIONS

### American Paintings from the National Gallery of Art

Through April 19, 1987  
West Building, Ground Floor

This special installation, arranged by subject matter, highlights the Gallery's holdings in late 18th- through early 20th-century American painting. Included in the selection of more than 50 works are such paintings as the Gibbs-Coolidge set of Gilbert Stuart's portraits of the first five American presidents, Rembrandt Peale's *Rubens Peale with a Geanium*, John Singleton Copley's *Watson and the Shark*, and James McNeill Whistler's *The White Girl (Symphony in White, No. 1)*. This arrangement of American paintings complements the exhibition of American furniture from the Kaufman collection.



Copley, *Watson and the Shark*, 1778  
National Gallery of Art,  
Ferdinand Lamot Belin Fund 1963

### American Prints and Drawings: Selections from the Permanent Collection

Through March 27, 1987  
West Building, Ground Floor

Organized chronologically, this exhibition features selections of American drawings and prints from the 18th through the 20th century. Demonstrating the great range in subjects of interest to American artists, the themes include current events, landscape views, religious works, portraits, genre scenes, and non-figurative compositions by more than 70 artists including Winslow Homer, Thomas Eakins, James McNeill Whistler, Georgia O'Keeffe, Jackson Pollock, Barnett Newman, Robert Rauschenberg, and Jasper Johns.

### Index of American Design: Furniture Renderings

Through March 22, 1987  
West Building, Ground Floor

These furniture renderings, depicting chairs, tables, chests of drawers, and clocks, were selected from approximately 1,700 in this subject category. Most of those on view were produced by artists in the New York City project whose renderings are among the finest in the Gallery's holdings. The Index is a collection of 17,000 watercolors depicting American decorative arts from the colonial period through the 19th century.

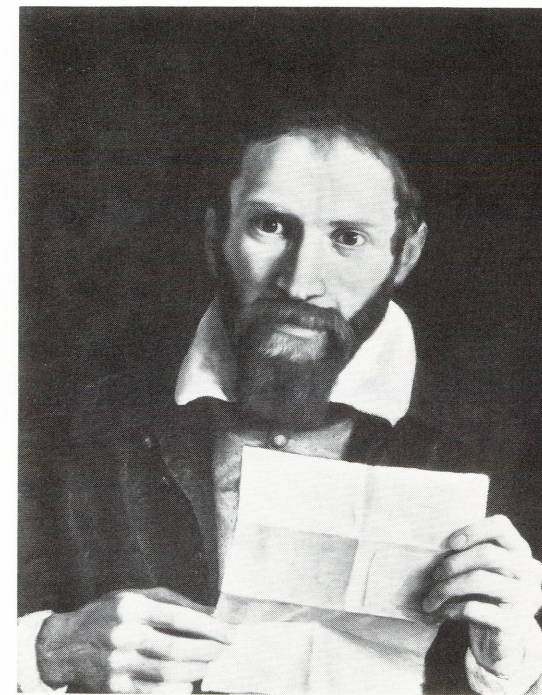
## OPENING EXHIBITION

### The Age of Correggio and the Carracci: Emilian Painting of the 16th and 17th Centuries

December 19, 1986-February 16, 1987  
West Building, Main Floor

This exhibition, the most comprehensive ever made of paintings from the northern Italian region of Emilia during the 16th and 17th centuries, features nearly 200 paintings by 50 artists from the principal artistic centers of Parma, Ferrara, and Bologna. *The Age of Correggio and the Carracci* focuses on the stylistic changes brought about by the Carracci family around 1600 and places these innovations in the context of what came before and after this important turning point in the history of Western art. Included in the exhibition are paintings by such well-known masters as Correggio, Parmigianino, Guercino, Domenichino, and Guido Reni, as well as works by the highly innovative Carracci family.

The exhibition has been organized in collaboration with the Pinacoteca Nazionale in Bologna and The Metropolitan Museum of Art in New York. *The Age of Correggio and the Carracci* is supported by an indemnity from the Federal Council on the Arts and the Humanities and has been made possible in part by Alitalia.



Domenichino, *Portrait of Monsignor Giovanni Battista Agucchi*, early 1620s  
City Art Gallery, York, England

## CONTINUING EXHIBITIONS

### Goya

Through January 4, 1987  
West Building, Main Floor

In the tradition of special loans of extraordinary paintings (such as the Caravaggio *Entombment* or Titian *The Flaying of Marsyas*), Goya's *Condesa de Chinchón*, on loan from the Ducal House of Sueca Collection, will be on view in Lobby A of the West Building. Further supplementing and highlighting the Gallery's own remarkable collection of Goya's art, two adjacent galleries include other paintings on loan from Spanish private collections, as well as a room of Goya prints from the Gallery and drawings on loan from private collectors. The opening in November coincided with the world premiere by the Washington Opera of Gian Carlo Menotti's new opera *Goya*, featuring Plácido Domingo. These loans and special installation have been made possible by a grant from the Pacific Telesis Foundation, and are supported by an indemnity from the Federal Council on the Arts and the Humanities.



Goya, *Don Bartolomé Sureda*, c. 1805  
National Gallery of Art, Gift of Mr. and Mrs. P. H. B. Frélinghuysen in memory of her father and mother, Mr. and Mrs. H. O. Havemeyer

### The Age of Bruegel: Netherlandish Drawings of the 16th Century

Through January 18, 1987  
East Building, Ground Floor

The exhibition is the first in the United States devoted solely to 16th-century Dutch and Flemish drawings and includes more than 100 examples of the finest drawings from major museums and private collections in Europe and America. Installed on the Ground Floor of the East Building, *The Age of Bruegel* presents a survey of the wide range of styles and subject matter representative of the period.

Included in the exhibition are works by such artists as Pieter Bruegel the Elder, Lucas van Leyden, Jan Gossaert, Jacques de Gheyn, Hendrick Goltzius, and Hieronymus Bosch. The selection traces the development of the Netherlandish school from the early influence of the late Gothic style to the awakening interest in antique art and the assimilation of Italian Renaissance and mannerist styles in the course of the 16th century. Also highlighted is the indigenous Netherlandish landscape tradition.

The exhibition is supported by Shell Companies Foundation, Incorporated, and Unilever United States, Inc. and by an indemnity from the Federal Council on the Arts and the Humanities. *The Age of Bruegel* will be on view at The Pierpont Morgan Library January 30-April 5, 1987.

A fully illustrated exhibition catalogue is available for \$16.95. For mail orders add \$2.00 and send your request to: Publications Department / National Gallery of Art / Washington, D.C. 20565.

## CONTINUING EXHIBITIONS

### Alexander Archipenko: A Centennial Tribute

Through February 16, 1987  
East Building, Concourse

This exhibition commemorates the 100th anniversary of the birth of Alexander Archipenko (1887-1964), influential sculptor, painter, and draftsman and continues through February 16 on the Concourse Level of the East Building. Included in the selection is an important body of work representing Archipenko's early career from the collection of the Tel Aviv Museum, co-organizer of the exhibition.

A leading figure of the cubist movement, Archipenko is known for his revolutionary approach to form, material, and color. By merging painting with three-dimensional construction, he produced works that embraced not only the visual influences of cubism, but also those of Italian futurism and classical sculpture. His methods of opening up the plastic form with holes and concavities created a new idiom in modern sculpture.

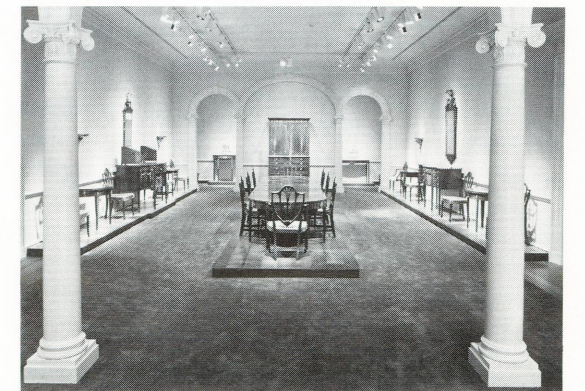
The exhibition will travel to the Tel Aviv Museum (March 12-June 13, 1987) and is supported by an indemnity from the Federal Council on the Arts and the Humanities.

"The Federal Period" gallery in American Furniture from the Kaufman Collection

### American Furniture from the Kaufman Collection

Through April 19, 1987  
West Building, Ground Floor

American furniture dating from the pre-Revolutionary period to the mid-19th century remains on view in the West Building's Ground Floor Galleries through April 19. This exhibition of more than 100 examples of furniture from the major regional style centers of Boston, New York, Philadelphia, Newport, and Charleston marks the first time a selection of American furniture from one private collection is on view at the National Gallery of Art. The exhibition reveals the wide range and high quality of this exceptional collection, and traces the stylistic trends of 18th- and early 19th-century America.



### Henri Matisse: The Early Years in Nice 1916-1930

Through March 29, 1987  
East Building  
Mezzanine and Upper Levels

This is the first exhibition devoted exclusively to paintings by the 20th-century master Henri Matisse from the period between 1916 and 1930 when he lived and worked in the south of France. Intense light, interior decor, and most important, the people and the brilliant color of the setting provide the dominant themes that characterize this period of the artist's career. In Nice, the artist took up the challenge of representation within the format of an easel painting. The move from his earlier works to these more figurative paintings has been confusing to art critics, and this exhibition offers a rare opportunity to reassess the quality of Matisse's continued invention.

Featured in the exhibition are several thematic series of pictures brought together for the first time since they were painted. *Henri Matisse* includes 169 works, about one third of which have seldom or never been on public view. The exhibition, which will be seen only at the National Gallery of Art, is supported by an indemnity from the Federal Council on the Arts and the Humanities and has been made possible by a grant from the GTE Corporation.



Matisse, *The Breakfast* (detail), 1920  
Philadelphia Museum of Art,  
The Samuel S. White, 3rd, and Vera White Collection

**Pass System.** During crowded weekends and around holidays, free passes will be distributed if necessary on a first-come, first-served basis. Passes are for specified half-hour entry times and may be obtained at the special exhibition desk on the Ground Floor of the East Building. There are no advance reservations.

**Special Group Tours.** A limited number of guided tours are conducted through the Matisse exhibition before normal Gallery hours. Lasting one hour, the tours will be given Monday through Friday, at 9:40 a.m. and at 9:50 a.m., until March 20, 1987 (except holidays). These tours for groups of 15 people or more must be arranged in advance by mail only. Those wishing to book a group tour should write to: Matisse Tours / National Gallery of Art / Washington, D.C. 20565. You must enclose a self-addressed, stamped envelope for confirmation. Please provide alternate dates. We cannot make changes once an appointment is confirmed. We can accept cancellations only. No reservations or confirmations can be made by telephone.

**Recorded Tour.** During normal gallery hours, a forty-five minute recorded tour will be available: individuals \$3.00 each; students or senior citizens, \$2.50 each.

**Publications.** A fully illustrated catalogue, written by National Gallery of Art curator of 20th-century art Jack Cowart and guest curator Dominique Fourcade, is available for \$19.95. For mail orders add \$2.00 and send your request to: Publications Department / National Gallery of Art / Washington, D.C. 20565

**Recorded Information.** Current information on the Matisse exhibition is available by calling (202) 842-3472.

# GENERAL INFORMATION

## NATIONAL GALLERY OF ART

Washington, D.C. 20565

The telephone number for general information is 202-737-4215.

To change your mailing address for the Calendar of Events, please mail a copy of your new address to the Information Office, National Gallery of Art, Washington, D.C. 20565, taking care to include the mailing label from your last Calendar of Events.

## GALLERY HOURS:

Monday through Saturday 10:00 a.m. to 5:00 p.m.

Sunday noon to 9:00 p.m.

The Gallery is located between 3rd and 7th Streets, N.W., on Constitution Avenue. The East and West Buildings are connected by an all-weather underground passage with a moving walkway. Entrances to the West Building are on the Mall, on 7th Street, on Constitution Avenue at 6th Street, which has a ramp for the handicapped, and off 4th Street. The entrance to the East Building is on 4th Street off National Gallery Plaza and also has a ramp for the handicapped.

## RESTAURANTS

Four restaurants offer luncheon and light snacks throughout the year. Monday through Saturday, hours of operation are:

Terrace Café: 11:00 to 4:30

Café/Buffer: 10:00 to 3:30

Cascade Café: 11:00 to 3:30

Garden Café: 11:00 to 4:30

Sunday hours are noon to 6:00 p.m. for the Terrace Café, Café/Buffer, and Garden Café; noon to 4:30 p.m. for the Cascade Café.

COVER: Guercino, *Saint Luke Displaying a Painting of the Virgin* (detail), 1652-1653  
The Nelson-Atkins Museum of Art,  
Kansas City, Missouri