



**National Gallery of Art**

---

**CALENDAR OF EVENTS**

*January 1987*

# JANUARY

Monday, December 29  
through  
Sunday, January 4

Monday, January 5  
through  
Sunday, January 11

Monday, January 12  
through  
Sunday, January 18

Monday, January 19  
through  
Sunday, January 25

## COLLECTION HIGHLIGHTS

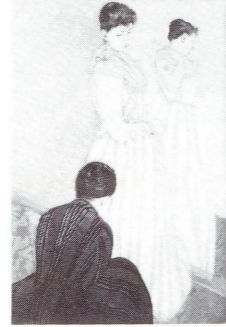
Brief gallery talks by lecturers from the Education Department on a single work of art. Reproductions of the art discussed may be purchased in the Gallery's sales shops; a written text is available without charge.

Tuesday through Saturday 12:00 p.m.  
Sunday 2:00 p.m.

December 30-January 4

Mary Cassatt  
*The Fitting*  
(Chester Dale Collection)  
West Building  
Ground Floor South 13

(The museum will be closed  
New Year's Day, Jan. 1)



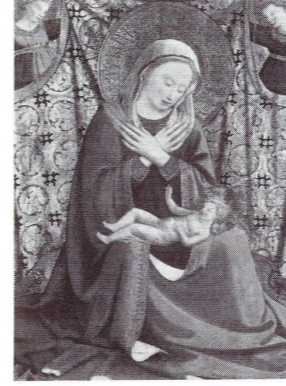
January 6-January 11

Edward Hopper  
*Cape Cod Evening*  
(John Hay Whitney Collection)  
West Building  
Ground Floor  
Central Gallery



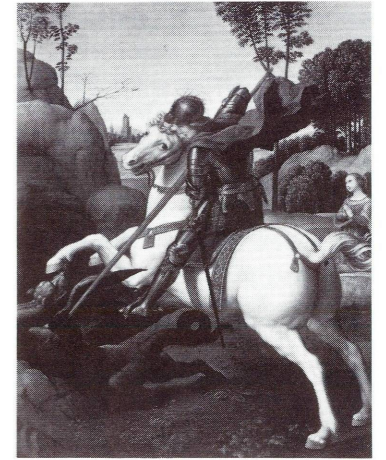
January 13-January 18

Fra Angelico  
*The Madonna of Humility*  
(Andrew W. Mellon Collection)  
West Building  
Gallery 4



January 20-January 25

Raphael  
*Saint George and the Dragon*  
(Andrew W. Mellon Collection)  
West Building  
Gallery 8



## SPECIAL TOURS

Fifty-minute tours by Education Department lecturers on related works of art.

Monday through Friday 11:00 a.m.

December 29-January 2

*The Portrait in Western Art*  
West Building, Rotunda

December 30-January 4

Alexander Archipenko:  
*A Centennial Tribute*  
East Building  
Ground Floor Lobby

(The museum will be closed  
New Year's Day, Jan. 1)

January 5-January 9

*Still-Life Images in the National Gallery of Art*  
West Building, Rotunda

January 6-January 11

*The Age of Correggio and the Carracci: The 16th Century*  
West Building, Rotunda

January 12-January 16

*Scenes of Landscape through the Ages*  
West Building, Rotunda

January 13-January 18

*The Age of Correggio and the Carracci: The 17th Century*  
West Building, Rotunda

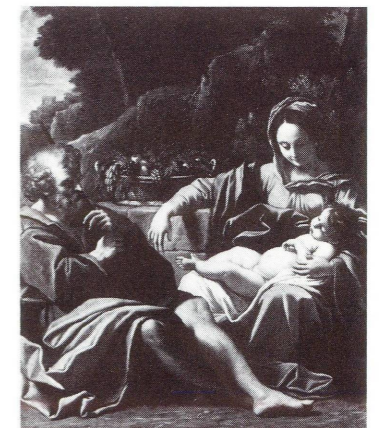
January 19-January 23

*Narrative Scenes in the Visual Arts*  
West Building, Rotunda

January 20-January 25

*American Works on Paper*  
West Building, Rotunda

(There will be no tours on  
Martin Luther King Day,  
Jan. 19)



Badalocchio, *Holy Family* (detail)  
Wadsworth Atheneum, Hartford

## FILMS

Free films on art and feature films related to special exhibitions. Unreserved seats are available on a first-come, first-served basis.

East Building Auditorium

December 31-January 4

*Matisse in Nice*  
(National Gallery of Art, 1986, 29 min.)  
Wed., Fri., Sat. 12:30  
Sun. 1:00

*Heroic Materialism*  
(episode 13 from the series  
*Civilisation* with  
Kenneth Clark, 50 min.)  
Sat. 2:30, Sun. 6:00

January 7-January 11

*The Mechanical Paradise*  
(episode 1 from the series  
*Shock of the New* with  
Robert Hughes, 52 min.)  
Wed. through Sat. 12:30  
Sun. 1:00

*Matisse in Nice*  
(National Gallery of Art,  
1986, 29 min.)  
Tues. through Fri. 2:00

*The Man with a Movie Camera* (Dziga Vertov,  
1929, 90 min.) and  
*Paris qui dort* (René  
Clair, 1923, 62 min.)  
Sat. 2:00, Sun. 6:00

January 14-January 18

*The Powers That Be*  
(episode 2 from the series  
*Shock of the New* with  
Robert Hughes, 52 min.)  
Wed. through Fri. 12:30  
Sun. 1:00

*Matisse in Nice*  
(National Gallery of Art,  
1986, 29 min.)  
Tues. through Fri. 2:00

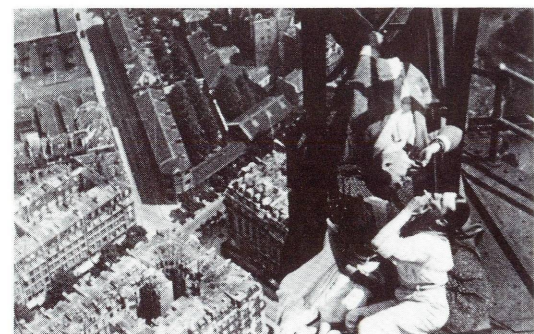
*Kinoglaz* (Dziga Vertov,  
1924, 80 min.) and  
selections from  
*Kino Pravda* (Dziga Vertov,  
1922, 30 min.)  
Sun. 6:00

January 21-January 25

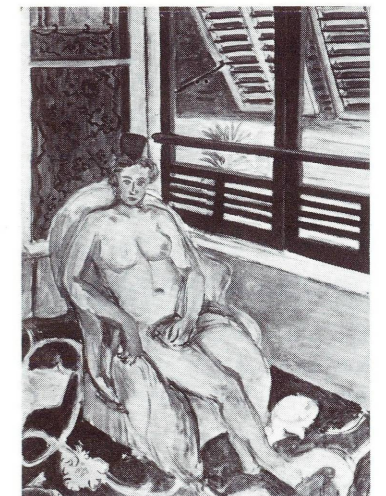
*The Landscape of Pleasure*  
(episode 3 from the series  
*Shock of the New* with  
Robert Hughes, 52 min.)  
Wed. through Sat. 12:30  
Sun. 1:00

*Matisse in Nice*  
(National Gallery of Art,  
1986, 29 min.)  
Tues. through Fri. 2:00

*Forward, Soviet!* (Dziga  
Vertov, 1926, 95 min.)  
and *Bed and Sofa* (Abram  
Room, 1926, 85 min.)  
Sat. 2:00, Sun. 6:00



*Paris qui dort*, 1923, by René Clair,  
to be shown January 10, 11  
(Museum of Modern Art/Film Stills Archive)



Matisse, *Nude with Spanish Comb, Seated by the Window*  
Kunstmuseum Solothurn,  
Josef Müller-Stiftung

## SUNDAY LECTURES

Free lectures given by distinguished scholars. No registration needed but seating is limited.

Sunday 4:00 p.m.  
East Building Auditorium

January 4

*Toward a New Image of Matisse*

Jack Cowart  
Curator of  
Twentieth-Century Art  
National Gallery of Art

January 11

*Neoclassical Elegance: Baltimore Furniture 1790 to 1850*

Gregory Weidman  
Curator of Furniture  
The Maryland  
Historical Society  
Baltimore, Maryland

January 18

*From the Carracci to Crespi: Seventeenth-Century Painting in Emilia*

David H. Steel, Jr.  
Curator of Italian and  
Spanish Art; North Carolina  
Museum of Art  
Raleigh, North Carolina

January 25

*On the Tyranny of an Icon: Fra Angelico and the Theme of the Annunciation*

William Hood  
Associate Professor of Art  
Oberlin College  
Oberlin, Ohio

## SUNDAY CONCERTS

Free concerts by the National Gallery Orchestra, recitalists, and ensembles. Unreserved seats available from 6:00 p.m. All concerts are broadcast live by WGMS 570 AM and 103.5 FM.

Sunday 7:00 p.m.  
West Building, West Garden Court

January 4

Douglas Riva, *Pianist*

Works by Herrando,  
Scarlatti, Granados,  
Gershwin, and American  
premiere of Courcelle's  
*Sonata in A Major*

January 11

National Gallery Orchestra  
George Manos, *Conductor*  
Mia Chung, *Pianist*

Works by Liadov,  
Prokofiev, and  
Rachmaninoff

January 18

Gregory Allen, *Pianist*

"Homage to Rubinstein"  
A program of music  
dedicated to Artur  
Rubenstein; works by  
Scarlatti, Ponce, DeFalla,  
Prokofiev, Poulenc,  
and Chopin

January 25

Rosa Lamoreaux, *Soprano*  
George Manos, *Pianist*

Works by Hindemith,  
Quilter, Poulenc, Manos,  
and Rachmaninoff

# National Gallery of Art

## Italian Painting and Sculpture Groups

In conjunction with the major exhibition of Italian painting, *The Age of Correggio and the Carracci: Emilian Painting of the 16th and 17th Centuries*, the Education Department will sponsor a "Learning to Look" discussion group. Utilizing both the works in the exhibition as well as the Gallery's own extensive collection of Italian art, participants will examine Italian paintings and sculpture from the late medieval period through the eighteenth century. Because active personal involvement is encouraged, *pre-registration is necessary* to limit the size of each discussion group. To register for one of the groups listed below, please call (202) 842-6259.

Section I	12:00 a.m. Tuesday, Jan. 20, 27; Feb. 3, 10
Section II	11:00 a.m. Wednesday, Jan. 21, 28; Feb. 4, 11
Section III	1:00 p.m. Wednesday, Jan. 21, 28; Feb. 4, 11
Section IV	11:00 a.m. Thursday, Jan. 22, 29; Feb. 5, 12
Section V	2:00 p.m. Thursday, Jan. 22, 29; Feb. 5, 12
Section VI	12:00 a.m. Friday, Jan. 23, 30; Feb. 6, 13

## TOURS AND FILMS

### Introduction to the East Building Collections

Monday through Saturday 11:00 a.m.  
Sunday 1:00 p.m.  
East Building, Ground Floor Lobby

### Introduction to the West Building Collections

Monday through Saturday 3:00 p.m.  
Sunday 5:00 p.m.  
West Building, Rotunda

### Foreign Language Tours

Regularly scheduled foreign language tours of the West Building are offered on Tuesdays at noon beginning in the Rotunda. The January schedule is as follows:

January 6	French
January 13	Spanish
January 20	German
January 27	Italian

### Film Series: Dziga Vertov

January 10 - February 21, 1987  
East Building Auditorium

A program devoted to the Soviet filmmaker Dziga Vertov begins on Saturday, January 10 with an introduction by Annette Michelson, professor of cinema studies at New York University and one of this year's resident fellows in the Center for Advanced Study in the Visual Arts at the National Gallery. Vertov was the preeminent documentary filmmaker and theorist of the Russian revolutionary generation. Throughout his career, he was affected by ideas that emerged from his association with the futurist and constructivist avant-garde. See reverse side for the films to be shown in January.

## Special Course Matisse: Master of Color

This four-week series of free slide lectures is offered in conjunction with the exhibition *Henri Matisse: The Early Years in Nice 1916-1930*. The talks will trace chronologically the evolution of Matisse's career and probe the master's development of an aesthetic of expressive decoration. The lectures will be given in the East Building Auditorium on Tuesdays at 12:30 p.m. and repeated on Saturdays at 11:00 a.m. No advance reservation is necessary, but seating is limited.

Jan. 6, 10	<i>Matisse and the Fauves</i>
Jan. 13, 24	<i>Matisse, the Modern Master</i>
Jan. 20, 31	<i>Matisse, the Years in Nice</i>
Jan. 27, Feb. 7	<i>Matisse, the Paper Cut-Outs</i>

## Family Programs

The Education Department continues its series of programs for families with children ages 6-12. This month features an animated film on "Castles" from the book by David Macaulay followed by a tour of paintings and decorative arts which illustrate life in a castle. Participants are asked to meet in the West Building Auditorium at 10:00 a.m. each Saturday morning for the free program, which lasts an hour and a half. Children must be accompanied by an adult. Please call 842-6249 for reservations.

## SPECIAL INSTALLATIONS



Rembrandt Peale, *Rubens Peale with a Geranium*  
National Gallery of Art, Patrons' Permanent Fund

### American Paintings from the National Gallery of Art

Through April 19, 1987  
West Building, Ground Floor

This special installation, arranged by subject matter, highlights the Gallery's holdings in late 18th- through early 20th-century American painting.

### American Prints and Drawings: Selections from the Permanent Collection

Through March 27, 1987  
West Building, Ground Floor

### Index of American Design: Furniture Renderings

Through March 22, 1987  
West Building, Ground Floor

## OPENING EXHIBITION

### The Age of Sultan Süleyman the Magnificent

January 25 - May 17, 1987  
East Building, Upper Level

*The Age of Sultan Süleyman the Magnificent* is the first major U.S. exhibition of treasures from the Golden Age of the Ottoman Empire. The exhibition represents the first time in more than 20 years that Turkish art has traveled to the United States. It will include more than 210 objects: illustrated manuscripts, drawings, and paintings; imperial items made of silver, gold, jade, and rock crystal embellished with gems; kaftans, textiles, embroideries, and rugs; inlaid woodwork, ceramics, and tiles. Although objects are being loaned from European and American public and private collections, the largest lender to the exhibition is the celebrated Topkapi Palace Museum in Istanbul, which served as Süleyman's administrative center and residence.

The exhibition presents the highest aesthetic and technical achievement of the Ottoman Empire during the reign of Sultan Süleyman I (1520-1566). Known in Turkey as "Kanuni," or "Lawgiver," in reference to his exemplary judicial acts which became the basis of many Western constitutional laws, the sultan was a renowned legislator, statesman, poet, and generous patron of the arts.



Ceremonial Kaftan  
Topkapi Sarayı Müzesi, Istanbul

Highlighted are such Turkish national treasures as an inlaid wooden throne, a unique map of the Americas made in 1513, the illustrated history of the Sultan's reign, illuminated copies of his collected poems, and personal items including Süleyman's kaftans and swords.

The exhibition is made possible by Philip Morris Companies Inc.

## CONTINUING EXHIBITIONS

### The Age of Correggio and the Carracci: Emilian Painting of the 16th and 17th Centuries

Through February 16, 1987  
West Building, Main Floor

This exhibition, the most comprehensive ever made of paintings from the northern Italian region of Emilia during the 16th and 17th centuries, features nearly 200 paintings by 50 artists from the principal artistic centers of Parma, Ferrara, and Bologna. *The Age of Correggio and the Carracci* focuses on the stylistic changes brought about by the Carracci family around 1600 and places these innovations in the context of what came before and after this important turning point in the history of Western art. Included in the exhibition are paintings by such well-known masters as Correggio, Parmigianino, Guercino, Domenichino, and Guido Reni, as well as numerous works by the Carracci family.

### Alexander Archipenko: A Centennial Tribute

Through February 16, 1987  
East Building, Concourse Level

This exhibition commemorates the 100th anniversary of the birth of Alexander Archipenko (1887-1964) and features an important body of work representing Archipenko's early career from the collection of the Tel Aviv Museum, co-organizer of the exhibition. A leading figure of the cubist movement, Archipenko is known for his revolutionary approach to form, material, and color. By merging painting with three-dimensional construction, he produced works that embraced not only the visual



Dal Sole, *Rinaldo and Armida*, c. 1690  
Cassa di Risparmio, Bologna

The exhibition has been organized in collaboration with the Pinacoteca Nazionale in Bologna and The Metropolitan Museum of Art in New York. *The Age of Correggio and the Carracci* is supported by an indemnity from the Federal Council on the Arts and the Humanities and has been made possible in part by Alitalia, Montedison/Progetto Cultura, and the Italian-American Cultural Foundation.

influences of cubism, but also those of Italian futurism and classical sculpture. His methods of opening up the plastic form with holes and concavities created a new idiom in modern sculpture.

The exhibition will travel to the Tel Aviv Museum (March 12-June 13, 1987) and is supported by an indemnity from the Federal Council on the Arts and the Humanities.

## CONTINUING EXHIBITIONS

### Henri Matisse: The Early Years in Nice 1916-1930

Through March 29, 1987  
East Building  
Mezzanine and Upper Levels

This is the first exhibition devoted exclusively to paintings by the 20th-century master Henri Matisse from the period between 1916 and 1930 when he lived and worked in the south of France. Intense light, interior decor, and most important, the people and the brilliant color of the setting provide the dominant themes that characterize this period of the artist's career. In Nice, the artist took up the challenge of representation within the format of an easel painting. The move from his earlier works to these more figurative paintings has been confusing to art critics, and this exhibition offers a rare opportunity to reassess the quality of Matisse's continued invention.

Featured in the exhibition are several thematic series of pictures brought together for the first time since they were painted. *Henri Matisse* includes 169 works, about one third of which have seldom or never been on public view. The exhibition, which will be seen only at the National Gallery of Art, is supported by an indemnity from the Federal Council on the Arts and the Humanities and has been made possible by a grant from the GTE Corporation.

**Pass System.** On crowded weekdays and weekends, free passes will be distributed if necessary on a first-come, first-served basis. Passes are for specified half-hour entry times and may be obtained at the special exhibition desk on the Ground Floor of the East Building. There are no advance reservations.

**Recorded Tour.** A forty-five minute recorded tour of the exhibition, narrated by J. Carter Brown, director of the National Gallery, is available: individuals \$3.00 each; students or senior citizens, \$2.50 each.

**Recorded Information.** Current information on the *Matisse* exhibition is available by calling (202) 842-3472.

## CLOSING EXHIBITIONS

### Goya: "The Condesa de Chinchón" and Other Paintings, Drawings, and Prints from Spanish and American Private Collections and the National Gallery of Art

Through January 4, 1987  
West Building, Main Floor

In the tradition of Gallery installations focused on extraordinary paintings, Goya's *Condesa de Chinchón* will be on view in Lobby A of the West Building. Two adjacent galleries feature six other paintings on loan from Spanish private collections, shown with the Gallery's own excellent collection of eleven Goya portraits, as well as a room of eleven remarkable Goya prints and drawings on loan from American private collectors plus early impressions surveying Goya's prints from the Gallery's own collections. This special installation has been made possible by a grant from the Pacific Telesis Foundation, and is supported by an indemnity from the Federal Council on the Arts and the Humanities.



Matisse, *The Closed Window*, 1918-1919  
Virginia Museum of Fine Arts,  
Collection of Mr. and Mrs. Paul Mellon

### American Furniture from the Kaufman Collection

Through April 19, 1987  
West Building, Ground Floor

American furniture dating from the pre-Revolutionary period to the mid-19th century remains on view in the West Building's Ground Floor Galleries through April 19. This exhibition of more than 100 examples of furniture from the major regional style centers of Boston, New York, Philadelphia, Newport, and Charleston marks the first time a selection of American furniture from one private collection is on view at the National Gallery of Art. The exhibition reveals the wide range and high quality of this exceptional collection, and traces the stylistic trends of 18th- and early 19th-century America.

**Recorded Tour.** A forty-five minute recorded tour of the exhibition, narrated by J. Carter Brown, director of the National Gallery, is available: individuals \$3.00 each; students or senior citizens, \$2.50 each.

### The Age of Bruegel: Netherlandish Drawings of the 16th Century

Through January 18, 1987  
East Building, Ground Floor

The exhibition is the first in the United States devoted solely to 16th-century Dutch and Flemish drawings and includes more than 100 examples of the finest drawings from major museums and private collections in Europe and America. *The Age of Bruegel* presents a survey of the wide range of styles and subject matter representative of the period. The selection traces the development of the Netherlandish school from the early influence of the late Gothic style to the awakening interest in antique art and the assimilation of Italian Renaissance and mannerist styles in the course of the 16th century. Also highlighted is the indigenous Netherlandish landscape tradition.

The exhibition is supported by Shell Companies Foundation, Incorporated, and Unilever United States, Inc. and by an indemnity from the Federal Council on the Arts and the Humanities.

# GENERAL INFORMATION

## NATIONAL GALLERY OF ART

Washington, D.C. 20565

The telephone number for general information is 202-737-4215.

To change your mailing address for the Calendar of Events, please mail a copy of your new address to the Information Office, National Gallery of Art, Washington, D.C. 20565, taking care to include the mailing label from your last Calendar of Events.

### GALLERY HOURS:

Monday through Saturday 10:00 a.m. to 5:00 p.m.

Sunday noon to 9:00 p.m.

The Gallery is located between 3rd and 7th Streets, N.W., on Constitution Avenue. The East and West Buildings are connected by an all-weather underground passage with a moving walkway. Entrances to the West Building are on the Mall, on 7th Street, on Constitution Avenue at 6th Street, which has a ramp for the handicapped, and off 4th Street. The entrance to the East Building is on 4th Street off National Gallery Plaza and also has a ramp for the handicapped.

### RESTAURANTS

Four restaurants offer luncheon and light snacks throughout the year. Monday through Saturday, hours of operation are:

Terrace Café: 11:00 to 4:30

Café/Buffer: 10:00 to 3:30

Cascade Café: 11:00 to 3:30

Garden Café: 11:00 to 4:30

Sunday hours are noon to 6:00 p.m. for the Terrace Café, Café/Buffer, and Garden Café; noon to 4:30 p.m. for the Cascade Café.

COVER: *Rock Crystal Jug*, second quarter 16th century  
Topkapi Sarayi Muzesi, Istanbul