

National Gallery of Art

CALENDAR OF EVENTS

July 1988

JULY

Monday, June 27
through
Sunday, July 3

Monday, July 4
through
Sunday, July 10

Monday, July 11
through
Sunday, July 17

Monday, July 18
through
Sunday, July 24

Monday, July 25
through
Sunday, July 31

COLLECTION HIGHLIGHTS

Brief gallery talks given by Education Department lecturers on a single work of art. Reproductions of the work discussed may be purchased in the Gallery's sales shops; a written text is available without charge.

Tuesday through Saturday 12:00 p.m.
Sunday 2:00 p.m.

June 28-July 3

Jan Steen
The Dancing Couple
(Widener Collection)
West Building
Gallery 50

Gwendolyn Everett, Lecturer



July 5-July 10

Jacob van Ruisdael
Forest Scene
(Widener Collection)
West Building
Gallery 47

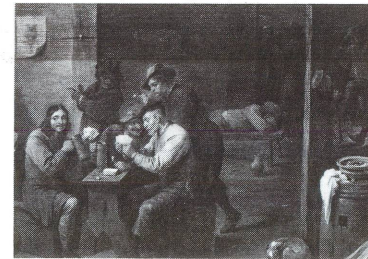
Christopher With, Lecturer



July 12-July 17

David Teniers II
Tavern Scene
(Gift of Robert H. and
Clarice Smith)
West Building
Gallery 44

Eric Denker, Lecturer



July 19-July 24

François Boucher
Madame Bergeret
(Samuel H. Kress
Collection)
West Building
Gallery 54

Margaret O'Neil, Lecturer



July 26-July 31

Clodion
*Terra-cotta Model for
"Poetry and Music"*
(Loula D. Lasker Fund)
West Building
Ground Floor North 13

John Cogswell, Lecturer



FILMS

Free films on art and feature films related to special exhibitions. Unreserved seats are available on a first-come, first-served basis.

East Building Auditorium

June 28-July 3

*Paul Gauguin - The Savage
Dream* (National Gallery
of Art, 1988, 45 min.)
Tues. through Fri. 2:00
Sat. 12:30
Sun. 1:00

The Horse of Pride
(Claude Chabrol, 1980,
118 min.)
Sat. 2:30
Sun. 4:00

The Horse of Pride, 1980,
by Claude Chabrol, to be shown
July 2 and 3

July 4-July 10

No film programs
this week



Paul Gauguin, *Breton Girls Dancing, Pont-Aven, 1888*, National Gallery of Art, Washington, Collection of Mr. and Mrs. Paul Mellon

July 12-July 17

No film programs
this week

July 19-July 24

*Paul Gauguin - The Savage
Dream* (National Gallery
of Art, 1988, 45 min.)
Tues. through Fri. 12:30 &
2:00; Sat. 12:30
Sun. 1:00

Vincent (Paul Cox,
1988, 105 min.)
Fri. 6:00

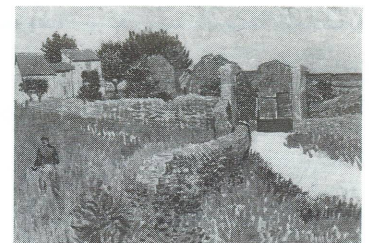
Gauguin the Savage
(Fielder Cook,
1980, 149 min.)
Sat. 2:30
Sun. 6:00

July 26-July 31

*Paul Gauguin - The Savage
Dream* (National Gallery
of Art, 1988, 45 min.)
Tues. through Fri. 12:30 &
2:00; Sat. 12:30
Sun. 1:00

Vincent (Paul Cox,
1988, 105 min.)
Fri. 6:00

Gauguin the Savage
(Fielder Cook,
1980, 149 min.)
Sat. 2:30
Sun. 6:00



Vincent van Gogh, *Farmhouse in
Provence, Arles, 1888*,
National Gallery of Art, Washington,
Ailsa Mellon Bruce Collection

SUNDAY LECTURES

Free lectures given by distinguished visiting scholars. No reservations needed but seating is limited.

Sunday 4:00 p.m.
East Building Auditorium

July 3

A film will be shown
in place of the
Sunday lecture

The Horse of Pride
(Claude Chabrol, 1980,
118 min.)

July 10

No program today

July 17

*Reading Gauguin:
The Artist as Writer
and Illustrator*

Marla Prather
Research Associate
The Art of Paul Gauguin
National Gallery of Art

July 24

*Rubens' "Rape of the
Daughters of Leucippus":
The Erotics of Absolutism*

Margaret Carroll
Professor of Art History
Wellesley College
Wellesley, Massachusetts



July 31

*Some Swedish Coronations:
1561-1697*

Guy Walton
Professor of Fine Arts
New York University
at Washington Square
New York, New York

Rubens, *The Rape of the Daughters
of Leucippus*, 1617/1618,
Alte Pinakothek, Munich

National Gallery of Art

Extended Summer Hours

The National Gallery is open until 9:00 p.m. each day through Monday of Labor Day weekend, September 5. Food service hours are being extended in the Terrace Café until 7:00 p.m. and in the Concourse Buffet until 6:30 p.m.

Film Programs

East Building Auditorium

In conjunction with *The Art of Paul Gauguin*, a new half-hour documentary, *Paul Gauguin - The Savage Dream*, will be shown regularly during July. In addition, a new Australian feature-length film on the life of Vincent van Gogh, *Vincent*, will be shown the last two weekends of July. *Vincent* opens in local theaters on August 5. *Gauguin the Savage*, a dramatization with David Carradine and Lynn Redgrave, will also be screened several times at the end of the month. Please see the reverse side for additional information.

Current Exhibition Catalogues

Sweden: *A Royal Treasury 1550-1700* \$14.95

The Art of Paul Gauguin \$27.50 softcover
\$69.95 hardcover

The Flag Paintings of Childe Hassam \$19.95

Paintings by Fitz Hugh Lane \$19.95 softcover
\$29.95 hardcover

Masterworks from Munich \$19.95

Available from the
National Gallery Publication Service
Sales Information (202) 842-6466
Mail Orders (202) 842-6465

INTRODUCTORY TOURS

Introduction to the West Building Collections

Monday through Saturday 3:00 p.m.
Sunday 5:30 p.m.
West Building, Rotunda

Introduction to the East Building Collections

Monday through Saturday 11:30 a.m.
Sunday 12:30 p.m.
East Building, Ground Floor Lobby

GRAPHICS EXHIBITION

Drawings on Stone: Early European Lithography

June 12-September 4, 1988
West Building, Ground Floor

This exhibition explores various early phases of the use of the technique of lithography, invented between the years 1796 and 1798 by Bavarian writer and printer Aloys Senefelder. Beginning with a selection of lithographs from the early British publication, *Specimens of Polyautography*, and examples illustrating the development of the medium in Germany and Russia, the show concludes

Festival of Old Master Painting

In conjunction with the exhibition *Masterworks from Munich*, the Education Department is offering a summer program devoted to Old Master paintings. The "Collection Highlight" talks in July and August will feature National Gallery pictures by many of the same artists whose works are on loan from Munich's Alte Pinakothek.

Weekday evenings, informal gallery classes will discuss Old Masters such as Titian, Tintoretto, Rubens, Van Dyck, and Boucher. Works by these artists in the Munich exhibition and in the Gallery's permanent collection will be considered in terms of their style and content. The three separate groups will meet for an hour and a half at 6:00 p.m. on four consecutive Tuesdays, Wednesdays, or Thursdays. Each free session will be limited to twenty participants who will be accepted on a first-come, first-served basis. Please call (202) 842-6259 to register for one of the following groups:

Tuesdays at 6:00 p.m.	July 19, 26 August 2, 9
Wednesdays at 6:00 p.m.	July 20, 27 August 3, 10
Thursdays at 6:00 p.m.	July 21, 28 August 4, 11

Family Programs

The Education Department will be giving a special program for the month of July on "Celebrations" for families with children ages 6 to 12. There will be a tour and then self-guided activities in the galleries. Participants are asked to meet in the West Building Rotunda at 10:00 a.m. each Saturday morning for the free program, which lasts an hour and a half. Children must be accompanied by an adult. Please call (202) 842-6249 for reservations.

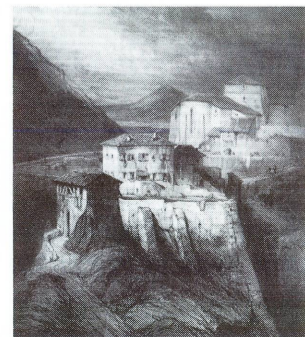
Foreign Language Tours

Regularly scheduled foreign language tours of the West Building are suspended for July and August. The one tour in the period covered by this calendar is as follows:

June 28 Italian

Recorded Tour of West Building

A recorded tour of the West Building collections, narrated by J. Carter Brown, is available at the Ground Floor Sales Area during Gallery hours.



Eugène Isabey, *Eglise Saint-Jean, Thiers, 1831*, National Gallery of Art, Washington, Rosenwald Collection

with examples of the full expression of the art in France in the 1820s and 1830s. The exhibition is made possible by a grant from Maxwell Communication Corporation.

CLOSING EXHIBITIONS

The Art of Paul Gauguin

Through July 31, 1988
East Building
Mezzanine and Upper Level

The Art of Paul Gauguin includes paintings, sculptures, and works on paper in addition to a number of rarely seen ceramics by the celebrated post-impressionist master. A catalogue, fully illustrated in color, accompanies the exhibition with essays by curators of the show, Charles F. Stuckey, curator of twentieth-century art, The Art Institute of Chicago; Richard Brettell, director, Dallas Museum of Art; Claire Frèches-Thory, curator, and Françoise Cachin, director, the Musée d'Orsay. After its Washington showing, *The Art of Paul Gauguin* will travel to The Art Institute of Chicago (September 17-December 11, 1988) and to the Galeries nationales du Grand Palais, Paris (January 10-April 20, 1989). The exhibition is jointly organized by the National Gallery, The Art Institute of Chicago, and the Réunion des musées nationaux. It is made possible by AT&T and is supported by an indemnity from the Federal Council on the Arts and the Humanities.

An automated slide overview of the exhibition will be shown at scheduled times in the East Building Auditorium. Seating will be first-come, first-served, with no reservations required.



Paul Gauguin, *Aha oe feii! (What! Are You Jealous?)*, 1892, Pushkin State Museum of Fine Arts, Moscow

The Flag Paintings of Childe Hassam

Through July 17, 1988
East Building, Ground Floor

The Flag Paintings of Childe Hassam is the first exhibition in 60 years to focus on this subject and is the second in a series of exhibitions at the National Gallery concentrating on important aspects of American impressionism. During the First World War, between 1916 and 1919, Hassam created a series of paintings depicting the flag-decorated streets of New York City as a theme to explore elements of composition and complexities of shape, color, and light. In addition to their intense patriotism, these pictures are formally and aesthetically some of the artist's most impressive images. The exhibition has been organized by Ilene Susan Fort, associate curator of American art at the Los Angeles County Museum of Art, who also wrote the accompanying scholarly catalogue. The exhibition and its counterparts in the National Gallery series, *William Merritt Chase: Summers at Shinnecock 1891-1902* and *John Twachtman*, are supported by Bell Atlantic.



Paul Gauguin, *Madeleine Bernard*, 1888, Musée de Grenoble

Recorded Tour. A forty-five minute recorded tour of the exhibition, narrated by J. Carter Brown, director of the National Gallery, is available at the entrance to the exhibition: individuals \$3.00 each; students or senior citizens \$2.50 each.

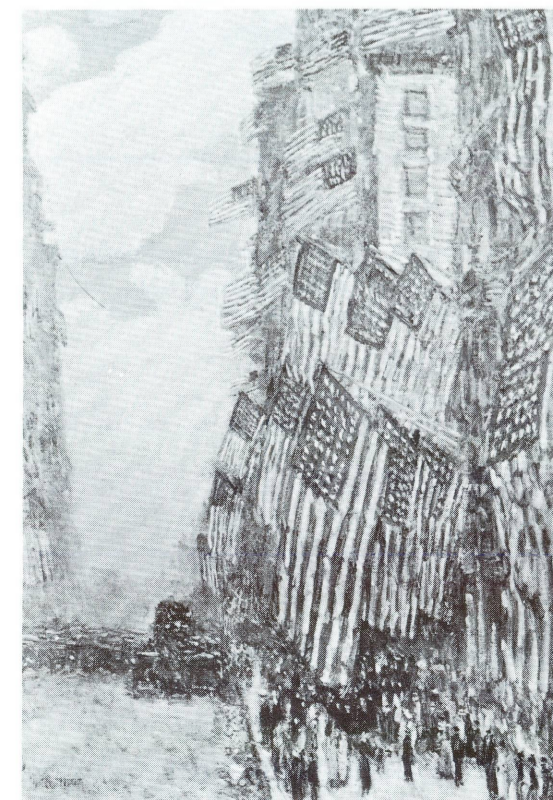
Pass System. Passes are distributed as necessary on a first-come, first-served basis. Passes are for specified entry times on the half-hour. Advance reservations can be made at the special pass desk on the Ground Floor of the East Building.

Passes acquired in person at the National Gallery are free of charge. Passes may also be obtained at all TicketCenter Outlets or ordered by calling TicketCenter in:

Washington	(202) 432-0200
Baltimore	(301) 381-6000
Richmond	(804) 780-3777
Nationwide Toll Free	(800) 448-9009

(for out-of-state calls)

There is a TicketCenter service charge for passes ordered through outlets (\$1.25) or by phone (\$1.75). Advance passes are not available by phone or mail from the National Gallery.



Childe Hassam, *The Fourth of July, 1916 (The Greatest Display of the American Flag Ever Seen in New York, Climax of the Preparedness Parade in May)*, Collection of Mr. and Mrs. Frank Sinatra

CONTINUING EXHIBITIONS

Masterworks from Munich: Sixteenth- to Eighteenth-Century Paintings from the Alte Pinakothek

Through September 5, 1988
West Building, Paul Mellon Galleries

Sixty-two paintings by major Italian, Flemish, Dutch, German, Spanish, and French artists from the sixteenth through the eighteenth centuries are on loan from the Alte Pinakothek in Munich, one of the greatest public collections in Europe. Included in the selection are Rubens' *The Rape of the Daughters of Leucippus*, Rembrandt's *Risen Christ*, Titian's *Vanity*, El Greco's *The Disrobing of Christ*, and Fragonard's *Girl with a Dog* as well as important examples of work by Boucher, Jan Brueghel the Elder, Elsheimer, Guardi, Murillo, Poussin, Ruisdael, Van Dyck, and Velázquez. The exhibition, which has been organized by the Cincinnati Art Museum and the National Gallery, is accompanied by



Jacob Jordaens, *The Satyr and the Peasant*, c. 1621-1625, Alte Pinakothek, Munich

Sweden: A Royal Treasury 1550-1700

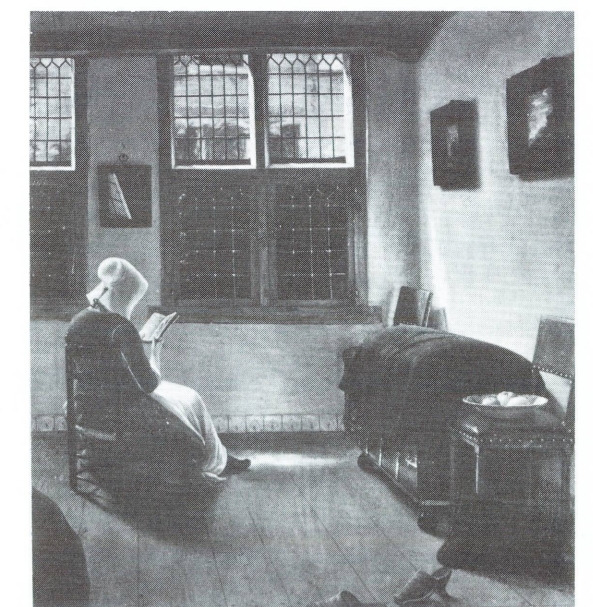
Through September 5, 1988
East Building, Mezzanine Level



Bowl, c. 1650, Royal Collections, Stockholm

This exhibition of more than 100 royal objects comes from an extraordinary chapter in European history. Featuring examples of decorative arts from the Swedish royal collections, the show demonstrates how works of art of great aesthetic merit were gathered and used by the kings and queens of sixteenth- and seventeenth-century Sweden. Included in the exhibition are crowns, scepters, and other regalia, armor and inlaid firearms, royal costumes, drawings, enamels, sculpture, and other objects from Swedish royal collections.

The exhibition is organized by the National Gallery and The Minneapolis Institute of Arts and is accompanied by a fully illustrated catalogue. The exhibition is made possible through contributions from The Boeing Company, the Federation of Swedish Industries, and the Swedish Government. It is supported by an indemnity from the Federal Council on the Arts and the Humanities. After its Washington debut, the exhibition will travel to The Minneapolis Institute of Arts (October 9, 1988-January 1, 1989).



Pieter Janssens Elinga, *Woman Reading* (detail), c. 1658/1660, Alte Pinakothek, Munich

a fully illustrated catalogue by Beverly Louise Brown, guest curator of southern baroque painting, and Arthur K. Wheelock, Jr., curator of northern baroque painting at the National Gallery. It will be on view in Cincinnati from October 25, 1988, to January 8, 1989. The exhibition is supported by the foreign office of the Federal Republic of Germany, by the German-American Cultural Fund, Inc., and by an indemnity from the Federal Council on the Arts and the Humanities. Lufthansa German Airlines is the official carrier for the exhibition.

Recorded Tour. A recorded tour narrated by J. Carter Brown is available at the entrance to the exhibition.

Paintings by Fitz Hugh Lane

Through September 5, 1988
West Building, Central Gallery



Fitz Hugh Lane, *Three-Master on a Rough Sea*, 1850s, Cape Ann Historical Association

Focusing on the finest work by this nineteenth-century American artist, founder of the luminist movement, *Paintings by Fitz Hugh Lane* includes a selection of 61 paintings dating from 1844 to 1864. Sequential series are featured: the early groups about Cape Ann, the Gloucester waterfront, the Boston Harbor series, the Maine coast, the later twilight pictures, and the final Brace's Rock group. The nucleus of the show has been selected from the permanent holdings of the Museum of Fine Arts, Boston, and the Cape Ann Historical Association, Gloucester, Massachusetts, supplemented by loans from other American public and private collections. The exhibition, organized by noted American art scholar John Wilmerding, deputy director of the National Gallery, is accompanied by a fully illustrated catalogue with essays by Wilmerding, Elizabeth Ellis, Franklin Kelly, Earl A. Powell III, and Erik Ronnberg, Jr. It will travel to the Museum of Fine Arts, Boston (October 5-December 31, 1988). The exhibition is made possible by a grant from GTE Corporation.

**NATIONAL GALLERY OF ART
Washington, D.C. 20565**

GENERAL INFORMATION

EXTENDED SUMMER HOURS

Monday through Saturday 10:00 to 9:00

Sunday noon to 9:00

The telephone number for general information is (202) 737-4215.

To change your mailing address for the Calendar of Events, please mail a copy of your new address to the Information Office, National Gallery of Art, Washington, D.C. 20565, taking care to include the mailing label from your last Calendar of Events.

The Gallery is located between 3rd and 7th Streets, N.W., on Constitution Avenue. The East and West Buildings are connected by an all-weather underground passage with a moving walkway. Entrances to the West Building are on the Mall, on 7th Street, on Constitution Avenue at 6th Street, which has a ramp for the handicapped, and off 4th Street. The entrance to the East Building is on 4th Street off National Gallery Plaza and also has a ramp for the handicapped.

RESTAURANTS

Four restaurants offer luncheon and light snacks throughout the year. Hours of operation from Monday through Saturday are:

Terrace Café:	11:00 to 7:00
Concourse Buffet:	10:00 to 6:30
Cascade Café:	11:00 to 2:30 (lunch) 2:30 to 4:30 (ice cream service)
Garden Café:	11:00 to 4:30

Sunday hours are noon to 7:00 for the Terrace Café; noon to 6:30 for the Concourse Buffet; noon to 3:30 for the Cascade Café; and noon to 7:30 for the Garden Café. The Garden Café offers dinner service from 5:00 to 7:30.

COVER: Childe Hassam, *Flags on the Friar's Club*
(detail), 1918, Mead Art Museum, Amherst College,
Massachusetts, Gift of Henry Steele Commager