



**National Gallery of Art**

---

**CALENDAR OF EVENTS**

*October 1988*



# OCTOBER

Monday, September 26  
through  
Sunday, October 2

Monday, October 3  
through  
Sunday, October 9

Monday, October 10  
through  
Sunday, October 16

Monday, October 17  
through  
Sunday, October 23

Monday, October 24  
through  
Sunday, October 30

## COLLECTION HIGHLIGHTS

Brief gallery talks given by Education Department lecturers on a single work of art. Reproductions of the work discussed may be purchased in the Gallery's sales shops; a written text is available without charge.

Tuesday through Saturday 12:00 p.m.  
Sunday 2:00 p.m.

September 27-October 2

Edgar Degas  
*The Tub*  
(Collection of Mr. and  
Mrs. Paul Mellon)  
West Building  
Ground Floor North 16

Marilyn Brockway, Lecturer



October 4-October 9

North Italian  
16th Century  
*The Spinario*  
(Samuel H. Kress Collection)  
West Building  
Ground Floor North 7

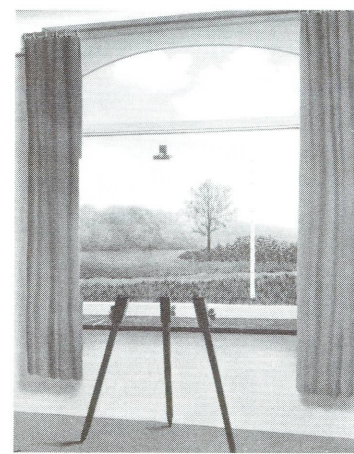
Gail Feigenbaum, Lecturer



October 11-October 16

René Magritte  
*La condition humaine*  
(Gift of the  
Collectors Committee)  
East Building  
Upper Level

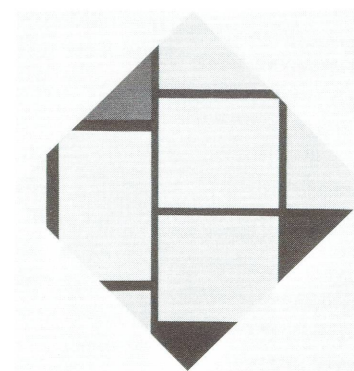
Julie Ann Springer,  
Lecturer



October 18-October 23

Piet Mondrian  
*Diamond Painting in Red,  
Yellow, and Blue*  
(Gift of Herbert and  
Nannette Rothschild)  
East Building  
Upper Level

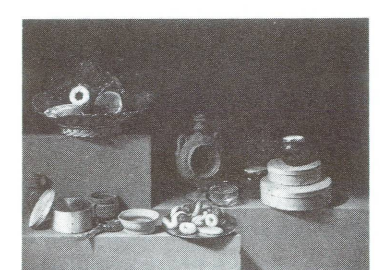
Philip Leonard, Lecturer



October 25-October 30

Juan van der Hamen y León  
*Still Life*  
(Samuel H. Kress Collection)  
West Building  
Gallery 36

Frances Feldman, Lecturer



## SPECIAL TOURS

One-hour thematic tours given by Education Department lecturers.

Tuesday through Saturday 1:00 p.m.  
Sunday 2:30 p.m.

September 27-October 2

*Aspects of Twentieth-  
Century Art: 1900-1945*  
East Building  
Ground Floor Lobby

Donna Mann, Lecturer

October 4-October 9

*Painting in the Age  
of Michelangelo*  
West Building  
Rotunda

Margaret M. O'Neil,  
Lecturer

October 11-October 16

*An Introduction to the  
History of Prints, Part I*  
West Building  
Rotunda

Eric Denker, Lecturer

October 18-October 23

*Michelangelo:  
Draftsman/Architect*  
West Building  
Rotunda

Russell Sale,  
Curator of Education

October 25-October 30

*An Introduction to the  
History of Prints, Part 2*  
West Building  
Rotunda

Donna Mann, Lecturer

## FILMS

Free films on art and feature films related to special exhibitions. Unreserved seats are available on a first-come, first-served basis.

East Building Auditorium

September 28-October 2

*Wallace Stevens: Man Made  
Out of Words* (Richard  
Rodgers and Robert  
Seidman, 1987, 58 min.)  
Wed. through Sat. 12:30  
Sun. 1:00

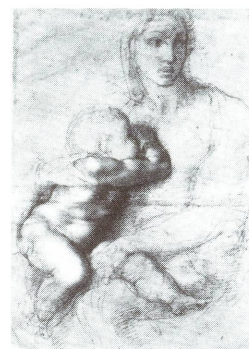
*The Afterglow: Robert  
Frost* (Burgess Meredith,  
1988, 50 min.)  
Sat. 2:30

October 5-October 9

*William Carlos Williams*  
(Richard Rodgers and Jill  
Janows, 1987, 58 min.)  
Wed. and Thurs. 12:30  
Sun. 1:00

October 12-October 16

*Return to Glory:  
Michelangelo Revealed—  
The Restorations in the  
Sistine Chapel* (Nippon  
Television, 1986, 52 min.)  
Wed. through Sat. 12:30  
Sun. 1:00



Michelangelo, *Cartoon for a  
Madonna and Child, Casa Buonarroti*

October 19-October 23

*Bernard Berenson*  
(Kenneth Clark, 1971,  
50 min.)  
Wed., Fri., Sat. 12:30  
Sun. 1:00

*The Titan: Story of  
Michelangelo* (Curt Oertel,  
Robert Flaherty, Robert  
Snyder, 1940-1949, 67 min.)  
and *Michelagnolo: Self-  
Portrait* (Robert Snyder,  
1987, 84 min.)  
Sat. 2:00

October 26-October 30

*Return to Glory:  
Michelangelo Revealed—  
The Restorations in the  
Sistine Chapel* (Nippon  
Television, 1986, 52 min.)  
Wed. through Sat. 12:30  
Sun. 1:00

*Tosca's Kiss* (Daniel  
Schmid, 1985, 84 min.,  
English subtitles)  
Sat. 2:30  
Sun. 6:00

## SUNDAY LECTURES

Free lectures given by distinguished visiting scholars. No reservations needed but seating is limited.

Sunday 4:00 p.m.  
East Building Auditorium

October 2

**Art and the Spectator  
in the Italian Renaissance**

*Introduction: A more  
Engaged Spectator*

John Shearman  
A. W. Mellon Lecturer  
in the Fine Arts

October 9

**Art and the Spectator  
in the Italian Renaissance**

*A Shared Space*

John Shearman  
A. W. Mellon Lecturer  
in the Fine Arts

October 16

**Art and the Spectator  
in the Italian Renaissance**

*Portraits and Poets*

John Shearman  
A. W. Mellon Lecturer  
in the Fine Arts

October 23

**Art and the Spectator  
in the Italian Renaissance**

*Domes*

John Shearman  
A. W. Mellon Lecturer  
in the Fine Arts

October 30

**Art and the Spectator  
in the Italian Renaissance**

*History-Painting and the  
Concept of Energy*

John Shearman  
A. W. Mellon Lecturer  
in the Fine Arts

## SUNDAY CONCERTS

Free concerts by the National Gallery Orchestra, recitalists, and ensembles. Unreserved seats available from 6:00 p.m. All concerts are broadcast live by WGMS 570 AM and 103.5 FM.

Sunday 7:00 p.m.  
West Building, West Garden Court

October 2

National Gallery Orchestra  
George Manos, *Conductor*  
Beverly Benso, *Contralto*

Works by Mozart,  
Rachmaninoff, and Bales

October 9

National Gallery Orchestra  
George Manos, *Conductor*

Works by Respighi and  
Mendelssohn

In honor of the exhibition  
*Michelangelo:  
Draftsman/Architect*

October 16

Rita Bouboulidi, *Pianist*

Works by Beethoven,  
Brahms, and Chopin

October 23

Ondine Ensemble  
of London

Works by Pierné, Roussel,  
and Franck

October 30

Masuko Ushioda, *Violinist*

Works by Beethoven,  
Takemitsu, and Ysaÿe

In honor of the exhibition  
*Japan: The Shaping of  
Daimyo Culture 1185-1868*



# National Gallery of Art

## Nō Performance on the Mall

A special torchlit evening performance of *Takigi Nō* will take place on Saturday, October 29, at 5:30 p.m. (capacity 2000). Seating will be on a first-come, first-served basis on the steps of the south side of the National Gallery's West Building, facing the Mall. A preview of the Daimyo exhibition will follow the performance. For further information please call 842-3472.

## Film Programs

### East Building Auditorium

A series devoted to twentieth-century American poets concludes this month with studies of Wallace Stevens, William Carlos Williams, and Burgess Meredith's new film on Robert Frost. The films in the series examine the interrelationships between modern poetry and painting.

Beginning October 12, a film program on Italian art opens with the recent Nippon Television documentary on the restorations in the Sistine Chapel. This film is offered in conjunction with the exhibition *Michelangelo: Draftsman/Architect*, and will be shown several times throughout October. Also included in the Italian series is Kenneth Clark's portrait of art critic and historian Bernard Berenson, Daniel Schmid's study of the Casa Verdi in Milan, the 1940 classic film on Michelangelo's career—*The Titan*—and a recent feature-length portrait of Michelangelo incorporating footage from *The Titan*. Please see the reverse side for additional information.

## Special Presentation

### *The Restoration in Progress of Michelangelo's Frescoes in the Sistine Chapel*

Walter Persegati, Secretary and Treasurer of the Vatican Museums, will discuss the work being done to clean and restore Michelangelo's ceiling frescoes in the Sistine Chapel.

Monday, October 17  
6:00 p.m. East Building Auditorium  
(Please use East Building Entrance)

This program is open to the public and free of charge. Seating is limited.

## INTRODUCTORY TOURS

### Introduction to the West Building Collections

Monday through Saturday 3:00 p.m.  
Sunday 5:30 p.m.  
West Building, Rotunda

### Introduction to the East Building Collections

Monday through Friday 11:30 a.m.  
Saturday 11:00 a.m.  
Sunday 12:30 p.m.  
East Building, Ground Floor Lobby

## Gallery Concerts Resume

Sunday evening concerts in the West Garden Court will resume on October 2 and continue weekly through June, 1989. The first two concerts of the season will be played by the National Gallery Orchestra, George Manos conducting, with works by Rachmaninoff, Mozart, and Bales on October 2 and works by Respighi and Mendelssohn on October 9. Please see reverse side for additional information.

## Mellon Lecture Series

The 1988 Andrew W. Mellon Lectures in the Fine Arts will be given by John Shearman, Professor of Fine Arts, Harvard University. Entitled *Art and the Spectator in the Italian Renaissance*, the series of six lectures begins Sunday, October 2, in the East Building Auditorium. Please see reverse side for additional information.

## Family Programs

Catch election fever! Join our campaign trail and take a tour of portraits of historical political leaders from around the world. Then cast a ballot for your favorite candidate. Families with children ages 6 to 12 are asked to meet in the West Building Lecture Hall at 10:00 each Saturday morning for this free program that lasts an hour and a half. Children must be accompanied by an adult. Please call (202) 842-6249 for reservations.

## Christmas Stamp Ceremony

The annual Christmas stamp ceremony will take place on Thursday, October 20, at 11:00 a.m. in the East Building Auditorium. This year's stamp will feature Botticelli's *Madonna and Child*.

## Current Exhibition Catalogues

*Raphaelle Peale Still Lifes* \$14.00

*Japan: The Shaping of Daimyo Culture 1185-1868* \$27.50

Available from the  
National Gallery Publication Service  
Sales Information (202) 842-6466  
Mail Orders (202) 842-6465

## Recorded Tour of West Building

A recorded tour of the West Building collections, narrated by J. Carter Brown, is available at the Ground Floor Sales Area.

## Foreign Language Tours

Regularly scheduled foreign language tours of the West Building are offered on Tuesdays at noon beginning in the Rotunda. The October schedule is as follows:

September 27 *Italian*  
October 4 *French*  
October 11 *Spanish*  
October 18 *German*  
October 25 *Italian*

## OPENING EXHIBITIONS

### Michelangelo: Draftsman/Architect

October 9-December 11, 1988  
West Building, Main Floor

This exhibition of Michelangelo drawings, presented in two parts, reflects the diverse talents of this remarkable Renaissance master. The first part focuses on Michelangelo's figure drawings, ranging from preliminary studies to major "presentation" pieces. The second part of the exhibition concentrates on two of Michelangelo's most important architectural endeavors—the façade of the church of San Lorenzo in Florence and the drum and dome of Saint Peter's Basilica in Rome. It includes approximately 30 sketches and two large wooden models of these structures.

The first part of the exhibition, organized by the National Gallery of Art, Washington, in association with the Casa Buonarroti, Florence, the Royal Library, Windsor Castle, and the Olivetti Company, Milan, will travel to the Musée du Louvre in Paris. The corresponding catalogue is by Michael Hirst of the Courtauld Institute of Art, London.

The second part has been organized by the National Gallery, the Casa Buonarroti, and the Olivetti Company. A catalogue for this section, by Henry Millon, Dean of the



Michelangelo, *Cleopatra*, Casa Buonarroti

National Gallery's Center for Advanced Study of the Visual Arts and Craig Hugh Smyth, former Kress Professor at the National Gallery, is also available. The exhibition is supported by an indemnity from the Federal Council on the Arts and the Humanities.



Portrait of Honda Takayuki (detail), early 17th century, Honda Takayuki Collection, Tokyo

ceremony performed by Japanese tea masters, and to view a special installation of tea utensils and related works of art. *The Art of the Tea Ceremony* is made possible by The Asahi Shimbun, the Yabunouchi School of Tea, The Nomura Securities Co., Ltd., and All Nippon Airways.

**Pass system.** Passes for the Daimyo exhibition are distributed as necessary on a first-come, first-served basis. Passes are for specified entry times on the half-hour. Advance reservations can be made at the special pass desk on the Ground Floor of the East Building.

Passes acquired in person at the National Gallery are free of charge. Passes may also be obtained at all TicketCenter outlets or ordered by calling TicketCenter in:

Washington (202) 432-0200  
Baltimore (301) 381-6000  
Richmond (804) 780-3777  
Nationwide Toll Free (800) 448-9009  
(for out-of-state calls)

There is a TicketCenter service charge for passes ordered through outlets (\$1.50) or by phone (\$2.00). Advance passes are not available by phone or mail from the National Gallery.

## OPENING EXHIBITION

### Raphaelle Peale Still Lifes

October 16, 1988-January 29, 1989  
East Building, Ground Floor

This is the first exhibition devoted solely to the still lifes of the nineteenth-century American still-life artist Raphaelle Peale (1774-1825). Thirty-two of his most important paintings will be on view, including *After the Bath*, one of the masterpieces of illusionism. The works of Raphaelle Peale, through painstaking detail of brushwork, bring to life the otherwise ordinary nature of his subject matter.

An auxiliary group of paintings by other members of the Peale family will include the National Gallery's *Rubens Peale with a Geranium* by Rembrandt Peale. After its Washington debut the exhibition will travel to the Pennsylvania Academy of the Fine Arts, February 16-April 16, 1989. The



Raphaelle Peale, *Still Life with Strawberries and Ostrich Egg Cup*, 1814, Private Collection

exhibition, organized by the National Gallery of Art and the Pennsylvania Academy of the Fine Arts, is made possible by The Pew Charitable Trusts with additional support from The Circle of the Fine Arts, February 16-April 16, 1989. The

## CONTINUING EXHIBITIONS

### Italian Renaissance Drawings

Through December 31, 1988  
West Building, Ground Floor

Eighty Italian drawings from the fifteenth and sixteenth centuries, including some of the finest and earliest sheets in the National Gallery's permanent collection, make up this exhibition. Well-known masterpieces are seen with many recent acquisitions and works not previously exhibited. Among the artists represented are Parri Spinelli, Mantegna, Leonardo, Perugino, Fra Bartolommeo, Sebastiano del Piombo, Lotto, Tintoretto, Barocci, and the Carracci.

### Survey of Graphic Arts

Through December 31, 1988  
West Building, Ground Floor

This survey is taken from the National Gallery's own collection, exemplifying the various printmaking media—woodcut, engraving, etching, mezzotint, aquatint, lithograph, and silkscreen. Ranging from the late middle ages to the present, over 90 prints are on view, including works by Dürer, Rembrandt, Whistler, Toulouse-Lautrec, Johns, and Rosenquist. This exhibition, which highlights both media and subject matter, is part of an ongoing display of the Gallery's permanent graphic arts collection.

## EDUCATION PROGRAMS

### Gallery Talks

West Building, Rotunda

Sally Shelburne, Graduate Lecturing Fellow in the Education Department, will discuss "Petrus Christus' *Nativity* and its Audience," on Wednesday, October 19 at 2:00 and Saturday, October 26 at 2:00.

Gregor Kalas, Graduate Lecturing Fellow in the Education Department, will discuss "Renaissance Light: Color and Italian Art Theory," on Wednesday, October 26 at 2:00 and Saturday, October 29 at 2:00.

### Survey Course on Western Art

The Education Department will offer a survey course on the history of Western art, beginning October 3. This fourteen-part series will examine the development of painting and sculpture from the ancient world to the twentieth century. Lectures by Education staff will be held in the East Building Auditorium at 10:15 a.m. every other Monday morning. This free program is open to the public but seating is limited. There are three lectures to be offered in October:

October 3 *Ancient Near Eastern and Egyptian Art*  
October 17 *Greek and Roman Art*  
October 31 *Early Medieval and Romanesque Art*

### Special Course

East Building Auditorium

A four-part series of lectures on Michelangelo will be offered in conjunction with the exhibitions of Michelangelo's drawings opening on October 9. The series will consider Michelangelo as painter, sculptor, and architect and explore the role of his drawings in his working process. The lectures will be given by Dr. Bernadine Barnes, Fellow of the American Council of Learned Societies.

*Confronting a Tradition: Michelangelo's Early Work*

Tuesday, October 11, 12:30  
Saturday, October 15, 11:00

*Michelangelo in the Sistine Chapel*

Tuesday, October 18, 12:30  
Saturday, October 22, 11:00

*Michelangelo and the Medici*

Tuesday, October 25, 12:30  
Saturday, October 29, 11:00

*The Conflict of Religion and Art in Michelangelo's Late Work*

Tuesday, November 1, 12:30  
Saturday, November 5, 11:00



NATIONAL GALLERY OF ART  
Washington, D.C. 20565

## GENERAL INFORMATION

### GALLERY HOURS

Monday through Saturday 10:00 a.m. to 5:00 p.m.

Sunday noon to 9:00 p.m.

The telephone number for general information  
is (202) 737-4215.

To change your mailing address for the Calendar of Events,  
please mail a copy of your new address to the Information  
Office, National Gallery of Art, Washington, D.C. 20565,  
taking care to include the mailing label from your last  
Calendar of Events.

The Gallery is located between 3rd and 7th Streets, N.W.,  
on Constitution Avenue. The East and West Buildings are  
connected by an all-weather underground passage with a  
moving walkway. Entrances to the West Building are on the  
Mall, on 7th Street, on Constitution Avenue at 6th Street,  
which has a ramp for the handicapped, and off 4th Street. The  
entrance to the East Building is on 4th Street off National  
Gallery Plaza and also has a ramp for the handicapped.

### RESTAURANTS

Four restaurants offer luncheon and light snacks throughout  
the year. Hours of operation from Monday through Saturday  
are:

Terrace Café:	11:00 to 4:30
Concourse Buffet:	10:00 to 4:00
Cascade Café:	11:00 to 2:30 (lunch) 2:30 to 4:30 (ice cream service)
Garden Café:	11:00 to 4:30

Sunday hours are noon to 6:00 for the Terrace Café and  
Concourse Buffet; noon to 3:30 for the Cascade Café. For the  
convenience of concertgoers, the Garden Café offers dinner  
service from 5:00 to 7:30 during the concert season.

COVER: *Portrait of Minamoto Yoritomo*, 2nd half 13th  
century, Tokyo National Museum