



National Gallery of Art

CALENDAR OF EVENTS

November 1988

NOVEMBER

Monday, October 31
through
Sunday, November 6

Monday, November 7
through
Sunday, November 13

Monday, November 14
through
Sunday, November 20

Monday, November 21
through
Sunday, November 27

COLLECTION HIGHLIGHTS

Brief gallery talks given by Education Department lecturers on a single work of art. Reproductions of the work discussed may be purchased in the Gallery's sales shops; a written text is available without charge.

Tuesday through Saturday 12:00 p.m.
Sunday 2:00 p.m.

November 1-November 6

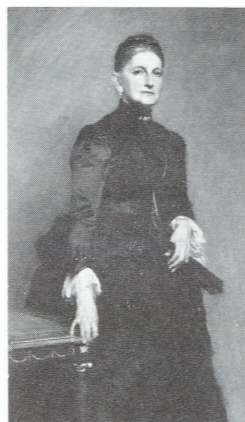
Sebastiano del Piombo
*A Prophet Addressed
by an Angel*
(Gift of Robert H.
and Clarice Smith)
West Building
Ground Floor South 9



November 8-November 13

John Singer Sargent
Mrs. Adrian Iselin
(Gift of Ernest Iselin)
West Building, Gallery 69

(There will be no talk on
Veteran's Day, Nov. 11)



November 15-November 20

Attributed to
Francesco Righetti
Mercury
(Andrew W. Mellon
Collection)
West Building, Rotunda



November 22-November 27

Thomas Cole
Voyage of Life: Youth
(Ailsa Mellon Bruce Fund)
West Building, Gallery 60

(There will be no talk on
Thanksgiving Day, Nov. 24)



SPECIAL TOURS

One-hour thematic tours given by Education Department lecturers.

Tuesday through Saturday 1:00 p.m.
Sunday 2:30 p.m.

November 1-November 6

Michelangelo's
Figure Drawings
West Building, Rotunda

(There will be no tours on
Veteran's Day, Nov. 11)

November 8-November 13

*The Visual Moralist:
The Artist as Commentator
on the Human Condition*
West Building, Rotunda

November 15-November 20

Raphaelle Peale
Still Lifes
East Building
Ground Floor Lobby

November 22-November 27

*Americans of the Colonial
and Federal Periods*
West Building, Rotunda

(There will be no tours on
Thanksgiving Day, Nov. 24)

FILMS AND THEATER

Free films on art, feature films and theater performances related to special exhibitions. Unreserved seats are available on a first-come, first-served basis.

East Building Auditorium (films)
East Building Mezzanine (theater)



The Men Who Tread on the Tiger's Tail, 1945, by Akira Kurosawa, to be shown November 15-20

November 1-November 6

Daimyo (National Gallery of Art, 1988, 30 min.)
Wed. through Sat. 12:30
Tues. through Fri. 2:00
Sun. 1:00

Kakita Akanishi (Mansaku Itami, 1936, 80 min., subtitled; introduction)
Sat. 2:00

Ran (Akira Kurosawa, 1985, 161 min., subtitled)
Sun. 6:00

Nō Performances

Funabenkei
Tues. 7:30

Funabenkei
Thurs. 7:30

Tsuchigumo
Sat. 7:30

November 8-November 10

Leonardo da Vinci: Nature Studies from the Royal Library, Windsor Castle (Colin Clark, 1980, 30 min.) and *The Genius of Venice* (Royal Academy of Arts, 1983, 20 min.)
Wed. and Thurs. 12:30

Daimyo (National Gallery of Art, 1988, 30 min.)
Tues. through Thurs. 2:00

November 15-November 20

Zen Culture, Zen Spirit (Dentsu Motion Pictures, 1978, 30 min.) and *Shinto: Nature, Gods, and Man* (Peter Grilli, 1977, 48 min.)
Tues., Thurs., Fri. 12:30
Sun. 1:00

Daimyo (National Gallery of Art, 1988, 30 min.)
Tues. through Fri. 2:00

The Men Who Tread on the Tiger's Tail (Akira Kurosawa, 1945, 58 min., subtitled) and *Ugetsu* (Kenji Mizoguchi, 1953, 96 min., subtitled)
Fri. 3:00, Sun. 6:00

Chushingura (Kenji Mizoguchi, 1941-1942, 218 min., subtitled)
Sat. 2:00

November 22-November 27

Daimyo (National Gallery of Art, 1988, 30 min.)
Tues., Wed., Fri. 12:30 & 2:00
Sat. 12:30, Sun. 1:00

Sansho the Bailiff (Kenji Mizoguchi, 1954, 125 min., subtitled)
Fri. 3:00, Sun. 6:00

A Tale from Chikamatsu (Kenji Mizoguchi, 1954, 100 min., subtitled; introduction)
Sat. 2:00



A Tale from Chikamatsu, 1954, by Kenji Mizoguchi, to be shown November 22-27 (Photofest)

SUNDAY LECTURES

Free lectures given by distinguished visiting scholars. No reservations needed but seating is limited.

Sunday 4:00 p.m.
East Building Auditorium

November 6

Art and the Spectator in the Italian Renaissance

Titian, Ariosto, and the Privileged Spectator

John Shearman
A. W. Mellon Lecturer

November 12 & 13

The Arts in the Age of Daimyo

A special two-day program of lectures, demonstrations, and performances in conjunction with the exhibition *Japan: The Shaping of Daimyo Culture* (see program to right)

November 20

Michelangelo: Architect

Henry Millon
Dean
Center for Advanced Study in the Visual Arts
National Gallery of Art

November 27

A Venetian Festival in Celebration of "The Art of Paolo Veronese" and "The Pastoral Landscape"

Beverly Brown
Guest Curator of Southern Baroque Painting
National Gallery of Art

SUNDAY CONCERTS

Free concerts by the National Gallery Orchestra, recitalists, and ensembles. Unreserved seats available from 6:00 p.m. All concerts are broadcast live by WGMS 570 AM and 103.5 FM.

Sunday 7:00 p.m.
West Building, West Garden Court

November 6

National Gallery Orchestra
George Manos, *Conductor*

Works by Chabrier, Frescobaldi, and Beethoven

November 13

Frederick Moyer, *Piano*

Works by Mozart, Mendelssohn, and Schubert

November 20

National Gallery Vocal Arts Ensemble
George Manos, *Artistic Director*

Works by Monteverdi, Tchaikovsky, Britten, and Ives

November 27

Ruth Waterman, *Violin*
Morey Ritti, *Piano*

Works by Bach, Beethoven, and Dvorák

SPECIAL EVENTS

The Nō Performances

The outdoor performance of *Takigi Nō* has been scheduled for October 29, at 5:45 p.m., on the Mall at the Madison Drive entrance to the West Building, followed by access to the Daimyo exhibition. The Gallery will be open to the public from performance end to 9:00 p.m. The first rain date for this performance will be Sunday, October 30, beginning at 4:45 (rain date performances will begin one hour earlier to compensate for the time adjustment to Eastern Standard Time from Daylight Savings Time), and the second rain date will be Saturday, November 5, beginning at 4:45. You may call 842-6721 or tune in to WGMS (570 AM and 103.5 FM) after 2:00 p.m. on the day of the performance for postponement information due to inclement weather.

Seating for indoor performances November 1, 3, and 5 (capacity 200 each evening) at 7:30 p.m. will be on a first-come, first-served basis. The Daimyo exhibition will be open following the performances.

Special Weekend Program

The Arts in the Age of Daimyo East Building Auditorium

SATURDAY, NOVEMBER 12, 1:30-5:00

Introduction

Yoshiaki Shimizu, professor of Art and Archaeology, Princeton University

Japanese Sculpture: Form and Function

Christine Guth, historian of Japanese art

Painting to the Samurai Taste

Barbara Ford, associate curator, Department of Asian Art, The Metropolitan Museum of Art

Laquer for Daimyo Patrons and Collectors

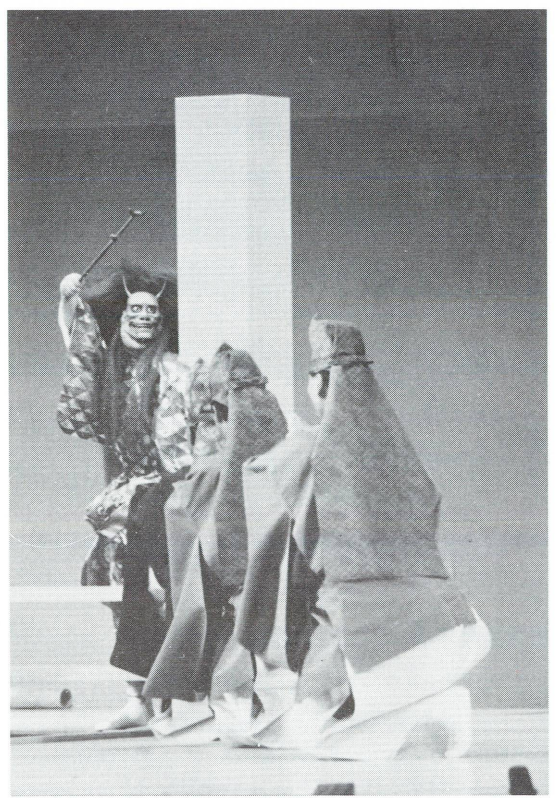
Ann Yonemura, assistant curator of Japanese art, Freer Gallery of Art, Arthur M. Sackler Gallery

Castles and Daimyo Estates

Bruce Coats, assistant professor of Art History and Humanities, Scripps College

Arms and Armor

Andrew Watsky, Princeton University



Dōjōji (photo courtesy of The Yomiuri Shimbun)

SUNDAY, NOVEMBER 13, 1:30-5:00

Introduction

Yoshiaki Shimizu, professor of Art and Archaeology, Princeton University

The Way of Tea

Janet Kohatsu, Princeton University

Ceramics

Louise Cort, museum specialist for ceramics, Freer Gallery of Art, Arthur M. Sackler Gallery

From Samurai Robe to Nō Robe

Amanda Stinchecum, Research Fellow, Hosei University Institute of Okinawan Studies

The Nō: Japan's Total Theater

Thomas Rimer, professor of Japanese language and literature, University of Maryland, College Park

Nō Dances Described and Danced

Howard Hamilton, M.D., Master of the Kita School of Nō, Hiroshima

The program is free of charge, but seating is limited.

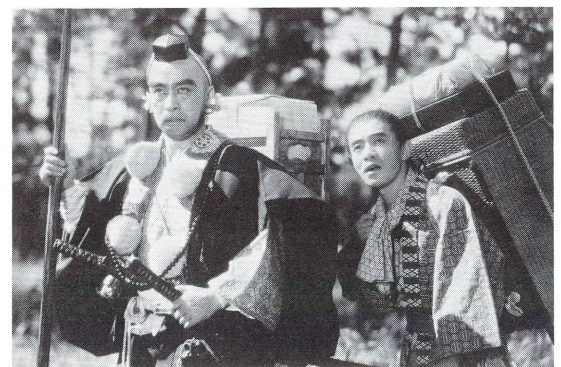
Film Programs

Japan's Period Films

East Building Auditorium

"Jidai-Geki: Images of the Daimyo Age in Japanese Cinema," a special series devoted to the Japanese period film from the 1930s through the present, opens November 5 with the rare *Kakita Akanishi* (1936) by Mansaku Itami. The series, which continues through January 22, consists of twenty-three films by Japan's most distinguished filmmakers. Among the films to be shown are *Ran* (Akira Kurosawa, 1985); *A Tale from Chikamatsu* (Kenji Mizoguchi, 1954); *Samurai Assassin* (Kihachi Okamoto, 1965); *The Hidden Fortress* (Akira Kurosawa, 1958); *Samurai Trilogy* (Hiroshi Inagaki, 1954-1955); *Kwaidan* (Masaki Kobayashi, 1964); and *Double Suicide* (Masahiro Shinoda, 1969).

A documentary series on the arts associated with the daimyo period in Japan



The Men Who Tread on the Tiger's Tail, 1945, by Akira Kurosawa, to be shown November 15-20

including *kendo* or swordsmanship, the tea ceremony, architecture, literature, Nō drama, ceramics, and laquerware begins November 15 with two films, *Zen Culture*, *Zen Spirit* and *Shinto: Nature, Gods, and Man in Japan*. For additional information, please see listings to the left.

Special Courses

The Arts of Japan under Daimyo Rule East Building Auditorium

A four-part lecture course introducing Japanese art in the age of the Daimyo will be offered in conjunction with the exhibition. The lectures will be given by Mark H. Sandler, assistant professor, Department of Art History, University of Maryland, College Park.

Revival and Innovation: Sculpture of Kamakura Period Japan
Wednesday, November 16, 12:30

Symbols and Settings: The Roles of Painting in Daimyo Culture
Wednesday, November 30, 12:30

Family Programs

The Education Department will offer two special family programs related to the exhibition *Japan: The Shaping of Daimyo Culture 1185-1868*. On Saturday, November 12, Howard Hamilton, M.D., Master of the Kita School of Nō, Hiroshima, will explain Nō masks and demonstrate their use in Nō drama. A tour of the exhibition will follow. On Saturday, November 19, Nanae Momiyami, Japanese calligrapher, will demonstrate the art of calligraphy, especially as related to the exhibition. The demonstration will be followed by a tour. Participants are asked to meet in the small auditorium in the East Building at 10:00 a.m. for both programs, which are free of charge and last an hour and a half. Children ages 6 to 12 must be accompanied by an adult. Space is limited; pre-registration is required. Please call (202) 842-6249. On Saturday, November 26, we will begin the holiday season with a program on the Christmas story.

Current Exhibition Catalogues

<i>Raphaelle Peale Still Lifes</i>	\$14.00
<i>Japan: The Shaping of Daimyo Culture 1185-1868</i>	\$27.50
<i>The Pastoral Landscape: The Legacy of Venice</i>	\$19.95
Available from the National Gallery Publication Service	
Sales Information	(202) 842-6466
Mail Orders	(202) 842-6465

INTRODUCTORY TOURS

Introduction to the West Building Collections

Monday through Saturday 3:00 p.m.
Sunday 5:30 p.m.
West Building, Rotunda

Introduction to the East Building Collections

Monday through Friday 11:30 a.m.
Saturday 11:00 a.m.
Sunday 12:30 p.m.
East Building, Ground Floor Lobby

The Conflict of Religion and Art in Michelangelo's Late Work

East Building Auditorium

The four-part series of lectures on Michelangelo continues from last month. These lectures are offered in conjunction with the exhibitions of Michelangelo's drawings and given by Dr. Bernardine Barnes, fellow of the American Council of Learned Societies.

Tuesday, November 1, 12:30
Saturday, November 5, 11:00

Gallery Talks

West Building, Rotunda

Gregor Kalas, Graduate Lecturing Fellow in the Education Department, will discuss "Some Michelangelo Drawings Used as Instruction on the Poetic Ideal," at 2:00 on Saturday, November 5, Wednesday, November 9, and Wednesday, November 16. Mr. Kalas will discuss "Renaissance Light: Color and Italian Art Theory," at 2:00 on Wednesday, November 26.

Sally Shelburne, Graduate Lecturing Fellow in the Education Department, will discuss "Petrus Christus' *Nativity* and its Audience," on Wednesday, November 2 at 2:00. Mrs. Shelburne will discuss "New Themes, New Feelings: The Late Paintings of Veronese" at 2:00 on Saturday, November 19, Wednesday, November 23, and Wednesday, November 30.

Survey Course on Western Art

The Education Department continues the survey course on the history of Western art begun October 3. This fourteen-part series examines the development of painting and sculpture from the ancient world to the twentieth century. Lectures by Education staff will be held in the East Building Auditorium at 10:15 a.m. every other Monday morning. This free program is open to the public but seating is limited. There will be two lectures offered in November:

November 14	<i>Gothic Art and the International Style</i>
November 28	<i>Renaissance</i>

Recorded Tour of West Building

A recorded tour of the West Building collections, narrated by J. Carter Brown, is available at the Ground Floor Sales Area.

Foreign Language Tours

Regularly scheduled foreign language tours of the West Building are offered on Tuesdays at noon beginning in the Rotunda. The November schedule is as follows:

November 1	<i>French</i>
November 8	<i>Spanish</i>
November 15	<i>German</i>
November 22	<i>Italian</i>



Giulio and Domenico Campagnola, *Shepherds in a Landscape*, c. 1517, National Gallery of Art, Washington, Rosenwald Collection

The Pastoral Landscape: The Legacy of Venice

November 6, 1988- January 22, 1989
West Building, Central Gallery

The Pastoral Landscape, a two-part exhibition on view at the National Gallery and The Phillips Collection, traces the origin



Andrea Previtali, *David the Shepherd*, c. 1500, Gift of Michael Straight, Herbert F. Johnson Museum of Art, Cornell University, Ithaca, New York

The Art of Paolo Veronese 1528-1588

November 13, 1988- February 20, 1989
West Building, Main Floor

This exhibition commemorates the 400th anniversary of the death of one of the most important sixteenth-century artists, Paolo Caliari, known as Veronese. The fifty paintings and fifty-four drawings on loan from public and private collections worldwide illustrate every aspect of Veronese's career. Renowned as one of the greatest colorists of all time, Veronese painted works famous for their visual splendor, their luminosity, and the jewel-like opulence of their silvered brocades.

The exhibition, which will not travel, is accompanied by a fully illustrated catalogue by W. R. Rearick, professor at the University of Maryland, with an introductory essay by Terisio Pignatti, professor at the University of Venice. The exhibition is made possible by a grant from Ford Motor Company. It is supported by an indemnity from the Federal Council on the Arts and the Humanities.

of this artistic tradition from sixteenth-century Venice to the present day. *The Legacy of Venice*, on view at the National Gallery, highlights the work of Venetian Renaissance masters and their influence on European artists of the seventeenth and eighteenth centuries. The selection of paintings, drawings, and prints includes works by Giorgione, Titian, Rembrandt, Claude Lorraine, and Watteau, among other artists.

At the Phillips the second half of the exhibition, *The Modern Vision*, focuses on the interpretation of the pastoral landscape in the work of nineteenth- and twentieth-century artists in America and Europe. On view are works by Gainsborough, Constable, Inness, Eakins, Cézanne, Matisse, and other masters, showing the continuity of the Venetian tradition.

The exhibition is made possible by grants from Ford Motor Company and The Morris and Gwendolyn Cafritz Foundation. Additional assistance was received from the L. J. and Mary C. Skaggs Foundation. The exhibition is also supported by an indemnity from the Federal Council on the Arts and the Humanities.



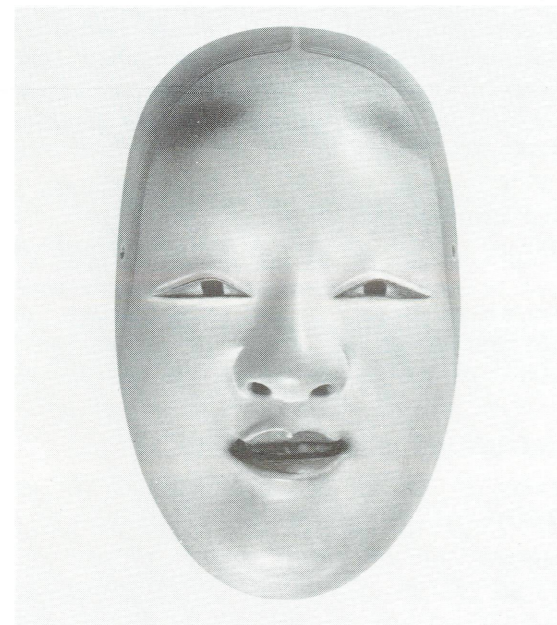
Veronese, *Rest on the Flight into Egypt*, 1572, John and Mable Ringling Museum of Art

Japan: The Shaping of Daimyo Culture 1185-1868

Through January 23, 1989
East Building
Mezzanine and Upper Level

More than 500 works of art from Japanese collections, including an unprecedented number of loans designated as National Treasures, Important Cultural Properties, and Important Art Objects, represent the great Daimyo families' contribution to Japan's artistic heritage from the middle ages to the mid-nineteenth century. The Daimyo (translated "great names" and pronounced "Dye-me-o") were powerful members of the warrior class and served the shoguns or military rulers of Japan. Included in the exhibition are portrait paintings, painted screens and sliding door panels, calligraphy, swords, lacquer, ceramics, domestic textiles, Nō masks, musical instruments and robes, and tea utensils. Every four weeks, some objects, owing to their sensitivity to light, will be taken off exhibition and replaced with other works of the same general type. The exhibition will be closed for a day on November 28 as a result.

Organized by the National Gallery in collaboration with Japan's Agency for Cultural Affairs and The Japan Foundation, the exhibition is made possible by R. J. Reynolds Tobacco Company, The Yomiuri Shimbun, The Nomura Securities Co., Ltd., and an indemnity from the Federal Council on the Arts and the Humanities.



Nō Mask, Koomote, 17th century, Eisei Bunko, Tokyo

In conjunction with the exhibition, several educational events are planned to enhance the public's understanding of the Daimyo period (for schedules of related films and lectures, see reverse side). A festival of Nō theater performances features two of Japan's most distinguished master players who are performing in the United States for the first time. The No Performances are made possible by The Yomiuri Shimbun, Nippon Telegraph and Telephone Co., Suntory Ltd., Sumitomo Life Insurance Co., Takeda Chemical Industries Ltd., The Nikko Securities Co., Ltd., and All Nippon Airways Co., Ltd.

In addition, an authentic Japanese tea house and garden have been constructed in the East Building. Visitors will have an opportunity to participate in a tea ceremony performed by Japanese tea masters. *The Art of the Tea Ceremony* is made possible by The Asahi Shimbun, the Yabunouchi School of Tea, The Nomura Securities Co., Ltd., and All Nippon Airways.



Bokkei Saiyo, *Daruma (Bodhidharma)*, c. 1465, Shinjuan, Kyoto Prefecture

A new half-hour film produced by the National Gallery, *Daimyo*, will be shown in the East Building Small Auditorium, Monday through Saturday, hourly beginning at 11:00 with the final showing at 4:00; Sundays hourly from 1:00 to 6:00. Seating will be first-come, first-served, with no reservations required.

For further information, please call 842-3472.

Pass Information

Japan: The Shaping of Daimyo Culture 1185-1865. Passes for the Daimyo exhibition are distributed as necessary on a first-come, first-served basis. Passes are for specified entry times on the half-hour. Advance reservations may be made at the special pass desk on the Ground Floor of the East Building.

Passes acquired in person at the National Gallery are free of charge. Passes may also be obtained at all TicketCenter outlets or by calling TicketCenter:

Washington	(202) 432-0200
Baltimore	(301) 381-6000
Richmond	(804) 780-3777
Nationwide Toll Free	(800) 448-9009
	(for out-of-state calls)

There is a TicketCenter service charge for passes ordered through outlets (\$1.50) or by phone (\$2.00). Advance passes are not available by phone or mail from the National Gallery.

The Art of the Tea Ceremony. A limited number of same-day passes will be available at the Gallery's East Building each weekday and Saturday morning for the duration of the exhibition. A 30-minute tea ceremony will be given at 11:00 a.m. on Tuesdays, Thursdays, and Saturdays and at noon every day Monday through Saturday. Same-day passes will be available at the pass desk each Sunday of the exhibition for 15-minute tea demonstrations beginning at 3:00 p.m., 3:30 p.m., and 4:00 p.m.

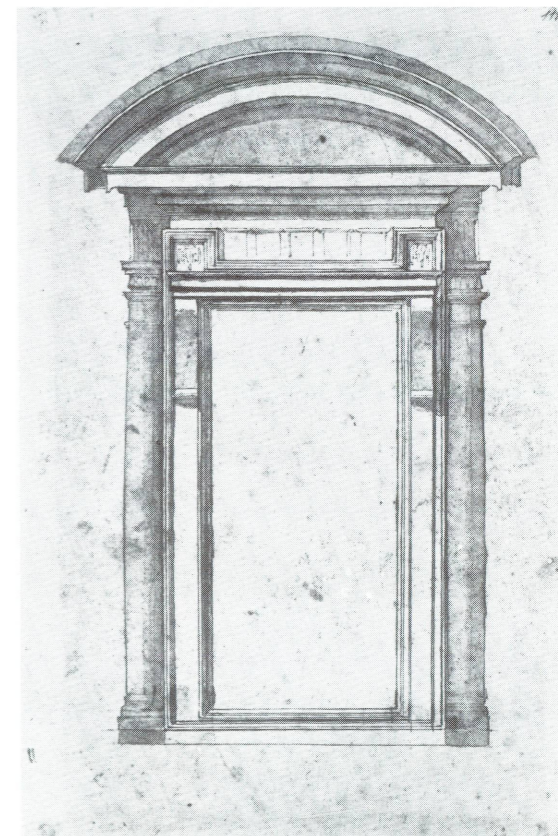
Michelangelo: Draftsman/Architect

Through December 11, 1988
West Building, Main Floor

This exhibition of Michelangelo drawings, presented in two parts, reflects the diverse talents of this remarkable Renaissance master. The first part focuses on 46 figure drawings by Michelangelo, ranging from preliminary studies to highly finished "presentation" sheets. The second part of the exhibition concentrates on two of Michelangelo's most important architectural endeavors—the façade of the church of San Lorenzo in Florence and the drum and dome of Saint Peter's Basilica in Rome. It includes approximately 30 sketches and two large wooden models of these structures.

The first part of the exhibition, organized by the National Gallery of Art, Washington, in association with the Casa Buonarroti, Florence, the Royal Library, Windsor Castle, and the Olivetti Company, Milan, will travel to the Musée du Louvre in Paris. The corresponding catalogue is by Michael Hirst of the Courtauld Institute of Art, London.

The second part has been organized by the National Gallery, the Casa Buonarroti, and the Olivetti Company. A catalogue for this section, by Henry Millon, Dean of the National Gallery's Center for Advanced Study in the Visual Arts, and Craig Hugh Smyth, former Kress Professor at the



Michelangelo, *Study for a Door*, Casa Buonarroti

National Gallery, is also available. In addition to the generosity of Olivetti, the exhibition is supported by an indemnity from the Federal Council on the Arts and the Humanities.

Raphaelle Peale Still Lives

Through January 29, 1989
East Building, Ground Floor

This is the first exhibition devoted solely to the still lifes of the nineteenth-century American artist Raphaelle Peale (1774-1825). Thirty-two of his most important paintings will be on view, including *After the Bath*, one of the masterpieces of illusionism. The works of Raphaelle Peale, through painstaking detail of brushwork, bring to life the otherwise ordinary nature of his subject matter.

An auxiliary group of paintings by other members of the Peale family will include the National Gallery's *Rubens Peale with a Geranium* by Rembrandt Peale. After its Washington debut the exhibition will travel to The Pennsylvania Academy of the Fine Arts, February 16-April 16, 1989. The exhibition, organized by the National Gallery of Art and The Pennsylvania Academy of the Fine Arts, is made possible



Raphaelle Peale, *Blackberries*, 1813, Private Collection

by The Pew Charitable Trusts. Additional funds to support its presentation at the National Gallery have been provided by The Circle of the National Gallery of Art.

Italian Renaissance Drawings

Through December 31, 1988
West Building, Ground Floor

Seventy-four Italian drawings from the fifteenth and sixteenth centuries, including some of the finest and earliest sheets in the National Gallery's permanent collection, make up this exhibition. Well-known masterpieces are seen with many recent acquisitions and works not previously exhibited. Among the artists represented are Mantegna, Leonardo da Vinci, Perugino, Fra Bartolommeo, Sebastiano del Piombo, Lotto, Tintoretto, Barocci, and the Carracci.

Master Prints: Selections from the Permanent Collection

Through December 31, 1988
West Building, Ground Floor

This survey is taken from the National Gallery's own collection, exemplifying the various printmaking media—woodcut, engraving, etching, mezzotint, aquatint, lithograph, and silkscreen. Ranging from the late middle ages to the present, over 90 prints are on view, including works by Dürer, Rembrandt, Whistler, Toulouse-Lautrec, Johns, and Rosenquist. This exhibition, which highlights both media and subject matter, is part of an ongoing display of the Gallery's permanent graphic arts collection.

NATIONAL GALLERY OF ART
Washington, D.C. 20565

GENERAL INFORMATION

GALLERY HOURS

Monday through Saturday 10:00 a.m. to 5:00 p.m.

Sunday noon to 9:00 p.m.

The telephone number for general information
is (202) 737-4215.

To change your mailing address for the Calendar of Events,
please mail a copy of your new address to the Information
Office, National Gallery of Art, Washington, D.C. 20565,
taking care to include the mailing label from your last
Calendar of Events.

The Gallery is located between 3rd and 7th Streets, N.W.,
on Constitution Avenue. The East and West Buildings are
connected by an all-weather underground passage with a
moving walkway. Entrances to the West Building are on the
Mall, on 7th Street, on Constitution Avenue at 6th Street,
which has a ramp for the handicapped, and off 4th Street. The
entrance to the East Building is on 4th Street off National
Gallery Plaza and also has a ramp for the handicapped.

RESTAURANTS

Four restaurants offer luncheon and light snacks throughout
the year. Hours of operation from Monday through Saturday
are:

Terrace Café:	11:00 to 4:30
Concourse Buffet:	10:00 to 4:00
Cascade Café:	11:00 to 2:30 (lunch) 2:30 to 4:30 (ice cream service)
Garden Café:	11:00 to 4:30

Sunday hours are noon to 6:00 for the Terrace Café and
Concourse Buffet; noon to 3:30 for the Cascade Café. For the
convenience of concertgoers, the Garden Café offers dinner
service from 5:00 to 7:30 during the concert season.

COVER: Michelangelo, *The Labors of Hercules*.
Copyright © Windsor Castle, Royal Library, Her Majesty
Queen Elizabeth II