



National Gallery of Art

CALENDAR OF EVENTS

September 1989

SEPTEMBER

Monday, August 28
through
Sunday, September 3

Monday, September 4
through
Sunday, September 10

Monday, September 11
through
Sunday, September 17

Monday, September 18
through
Sunday, September 24

COLLECTION HIGHLIGHTS

Brief gallery talks given by education department lecturers on a single work of art. Reproductions of the work discussed may be purchased in the Gallery's sales shops; a written text is available without charge.

Tuesday through Saturday 12:00 p.m.
Sunday 2:00 p.m.

August 29-September 3

Alessandro Algardi
The Rest on the Flight into Egypt
(Kaiser Fund, Loula D. Lasker Fund and Edward E. MacCrone Fund)
West Building
Ground Floor North 11

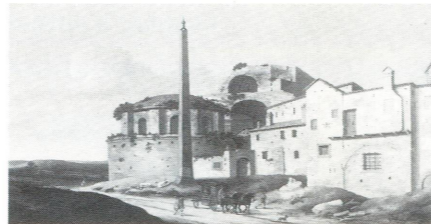
Gail Feigenbaum, Lecturer



September 5-September 10

Pieter Saenredam
Church of Santa Maria della Febbre, Rome
(Samuel H. Kress Collection)
West Building
Gallery 51

Dennis P. Weller, Lecturer



September 12-September 17

Andrea Mantegna
Judith and Holofernes
(Widener Collection)
West Building
Gallery 19

Marilyn B. Brockway,
Lecturer



September 19-September 24

Auguste Renoir
Pont Neuf, Paris
(Ailsa Mellon Bruce Collection)
West Building
Gallery 81

Eric Denker, Lecturer



SPECIAL TOURS

One-hour thematic tours given by education department lecturers.

Tuesday through Saturday 1:00 p.m.
Sunday 2:30 p.m.

August 29-September 3

On the Periphery of Art: A Survey of Picture Frames
West Building, Rotunda

William J. Williams,
Lecturer

September 5-September 10

American Naive Paintings
West Building, Rotunda

Donna Mann, Lecturer

September 12-September 17

Landscape Paintings from the Permanent Collection
West Building, Rotunda

Margaret O'Neil, Lecturer

September 19-September 24

The Concept of Reality in Twentieth-Century Art
East Building
Ground Floor Lobby

Christopher With, Lecturer

FILMS

Free films on art and feature films related to special exhibitions. Unreserved seats are available on a first-come, first-served basis.

East Building Auditorium



Mildred Pierce, Michael Curtiz, 1945, to be shown September 9 (The Museum of Modern Art/Film Stills Archive)

August 30-September 3

Photographer: Russell Lee
(Ann Mundy, 1986, video, 58 min.)
Wed. through Fri. 12:30
Sun. 1:00

Now Voyager (Irving Rapper, 1942, 117 min.)
Sat. 2:30

Double Indemnity (Billy Wilder, 1944, 106 min.) and
Scarlet Street (Fritz Lang, 1945, 103 min.)
Sun. 6:00

September 6-September 10

Thomas Hart Benton
(Ken Burns, 1989, 85 min.)
Wed. through Fri. 12:30
Sun. 1:00

The Postman Always Rings Twice (Tay Garnett, 1946, 113 min.) and
Mildred Pierce (Michael Curtiz, 1945, 109 min.)
Sat. 2:00

The Lady from Shanghai
(Orson Welles, 1948, 87 min.)
Sun. 6:00

September 13-September 17

Jackson Pollock: Portrait
(Amanda Pope, 1982, 60 min.)
Wed. through Sat. 12:30
Sun. 1:00

Notorious (Alfred Hitchcock, 1946, 101 min.)
Sat. 2:30

In a Lonely Place (Nicholas Ray, 1950, 94 min.)
Sun. 6:00

September 20-September 24

Conversations with Willard Van Dyke (Amalie Rothschild, 1981, 59 min.)
Wed. through Sat. 12:30
Sun. 1:00

Bigger Than Life (Nicholas Ray, 1956, 95 min.)
Sat. 2:30

Some Came Running
(Vincente Minnelli, 1958, 136 min.)
Sun. 6:00



Frans Hals, *Portrait of a Woman Holding a Fan*, c. 1640, The Trustees of the National Gallery, London

SUNDAY LECTURES

Free lectures given by distinguished visiting scholars. No reservations needed by seating is limited.

Sunday 4:00 p.m.
East Building Auditorium

September 3

Politics and Picasso

Patricia Leighton
Associate Professor
Department of Art History
University of Delaware
Newark, Delaware

September 10

Hadrian and the Mediterranean High Noon

William L. MacDonald
Visiting Robinson
Professor
George Mason University
Fairfax, Virginia

September 17

Art History and the Gender Gap: The Case of Artemisia Gentileschi

Mary D. Garrard
Professor
Department of Art
The American University
Washington, D.C.

September 24

Etching: The Painter's Choice

Sue Welsh Reed
Associate Curator
Prints, Drawings, and
Photographs
Museum of Fine Arts
Boston, Massachusetts

Film Programs

East Building Auditorium

"An American Genre: The Domestic Melodrama from Griffith to Hitchcock" continues on Saturday afternoons and Sunday evenings through October 8. Devoted to the family melodrama, a distinctly American cinematic form, this series of twenty-one classic films includes *Mildred Pierce* (Michael Curtiz, 1945), *Double Indemnity* (Billy Wilder, 1944), *In a Lonely Place* (Nicholas Ray, 1950), and *Some Came Running* (Vincente Minnelli, 1958), among others. Robert Kolker, professor of radio-television-film at the University of Maryland and organizer of the series, will introduce the programs on September 9 and 23.

Thomas Hart Benton, Ken Burns' new feature-length documentary on the American painter, will have its first Washington screening September 6 through 10. Please see the reverse side for additional information.



Notorious, Alfred Hitchcock, 1946, to be shown September 16 (The Museum of Modern Art/Film Stills Archive)

Gallery Talks

West Building, Rotunda

Douglas Lewis, Curator of Sculpture, National Gallery of Art, will discuss *Re-naisance Re-births: The Classical Apparatus of a Humanist's Writing-Desk* on Wednesday, September 13, at 2:00 p.m.

Survey Course on Western Art

The Education Department will offer a survey course on the history of Western art. The series of 14 lectures will examine the development of painting and sculpture from the ancient world to the twentieth century. Lectures by education staff will be held in the East Building Auditorium at 11:15 a.m. Monday and 11:00 a.m. Saturday mornings. This free program is open to the public but seating is limited. The September schedule is as follows:

| | |
|------------------|---------------------------------|
| September 18, 23 | <i>Art of the Ancient World</i> |
| September 25, 30 | <i>Medieval Art</i> |

Introduction to the East Building Collections

Monday through Friday 11:30 a.m.
Saturday 11:00 a.m.
Sunday 12:30 p.m.
East Building, Ground Floor Lobby

Foreign Language Tours

Regularly scheduled foreign language tours of the West Building are offered on Tuesdays at noon beginning in the Rotunda. The September schedule is as follows:

| | |
|--------------|----------------|
| September 5 | <i>French</i> |
| September 12 | <i>Spanish</i> |
| September 19 | <i>German</i> |
| September 26 | <i>Italian</i> |

Current Exhibition Catalogues

| | |
|--|---------|
| <i>Twentieth-Century Painting and Sculpture</i> | \$19.95 |
| <i>A Profile of the East Building</i> | \$15.00 |
| <i>Still Lives of the Golden Age: Northern European Paintings from the Heinz Family Collection</i> | \$17.95 |
| <i>American Paintings from the Manoogian Collection</i> | \$25.00 |
| <i>Italian Etchers of the Renaissance and Baroque</i> | \$34.50 |

Available from the National Gallery Publications Service
Sales Information (202) 842-6466
Mail Orders (301) 322-5900

INTRODUCTORY TOURS

Introduction to the West Building Collections

Monday through Saturday 3:00 p.m.
Sunday 5:30 p.m.
West Building, Rotunda

Recorded Tours

A recorded tour of the West Building collections, narrated by J. Carter Brown, is available at the Ground Floor Sales Area during Gallery hours.

A recorded tour of *Twentieth-Century Painting and Sculpture* is available in two parts at the East Building publications desk, Concourse Level.

A recorded tour of *American Paintings from the Manoogian Collection* is also available at the entrance to the exhibition.

OCTOBER PREVIEW

In October the National Gallery of Art will present three exhibitions of individual artists' works. Opening October 1, *Frans Hals*, an exhibition of one of the great portrait painters in the history of art, will feature more than sixty paintings and small oil sketches drawn from all phases of his remarkable career. This will be the first major showing of Hals' work to appear outside the Netherlands. The exhibition is supported by a generous grant from Republic National Bank of New York and will be at the Gallery through December 31.

Frederic Edwin Church will open on October 8 with approximately fifty of Church's finest paintings. Considered the



Frederic Edwin Church, *Hooker and Company Journeying through the Wilderness from Plymouth to Hartford, in 1636, 1846*, Wadsworth Atheneum, Hartford, Connecticut

OPENING EXHIBITIONS



Edward Hicks, *Peaceable Kingdom*, c.1834, National Gallery of Art, Washington, Gift of Edgar William and Bernice Chrysler Garbisch

American Naive Paintings from the National Gallery of Art

September 4–December 17, 1989
West Building, Central Gallery

More than sixty paintings from the National Gallery's collection of naive American art are on view for the first time in over three years after touring around the United States and Europe. The selection comes from the more than 300 paintings that were given to the Gallery by Edgar William and Bernice Chrysler Garbisch. In addition to several well-known anonymous works, the exhibition includes paintings by such important figures as Edward Hicks, Erastus Salisbury Field, William Matthew Prior, and Joshua Johnson.

Annibale Carracci, *The Holy Family*, 1590, Graphische Sammlung Albertina, Vienna



John Twachtman, *Winter Harmony*, c.1890/1900, National Gallery of Art, Washington, Gift of the Avalon Foundation

most popular painter of mid-nineteenth-century America, Church created landscapes that were iconic images of our national art. The exhibition will remain on view through January 28, 1990

Opening October 15 is *John Twachtman: Connecticut Landscapes*, the third in a series of related exhibitions of American impressionists at the National Gallery, each supported by Bell Atlantic. Twenty-six paintings, created by the artist between 1889 and 1901 on his farm in Greenwich, Connecticut, and other nearby locations, will be on view through January 28, 1990.

Italian Etchers of the Renaissance and Baroque

September 24–November 26, 1989
West Building, Ground Floor

This exhibition, comprising 130 prints, ten drawings, and ten illustrated books, explores the development of the etching medium in Italy from the beginning of the sixteenth to the end of the seventeenth century. Selected from public and private collections in the U.S. and in Europe, the show features such well-known Italian artists as Parmigianino, Federico Barocci, Annibale Carracci, Stefano della Bella, and Salvator Rosa, as well as important foreign artists working in Italy, such as Jusepe de Ribera, Jacques Callot, and Claude Lorrain.

Italian Etchers was organized by the Museum of Fine Arts, Boston, where it premiered, and traveled to the Cleveland Museum of Art before coming to the Gallery. The exhibition and catalogue were made possible by Fabriano Paper Mill, Italy. Generous funding has also been provided by the National Endowment for the Arts. The exhibition at the National Gallery is made possible by Mellon Bank.



CONTINUING EXHIBITIONS

Drawings of Landscape and Architecture from The Armand Hammer Collection

Through November 26, 1989
West Building, Ground Floor

Thirteen drawings of landscape and architecture are on view in an installation of master drawings from The Armand Hammer Collection. The works selected represent four centuries of draftsmanship and illuminate the breadth of the group of drawings assembled by Armand Hammer. The exhibition is one in a continuous series from the collection and is on display in the graphics galleries in the West Building.

Twentieth-Century Art: Selections for the Tenth Anniversary of the East Building

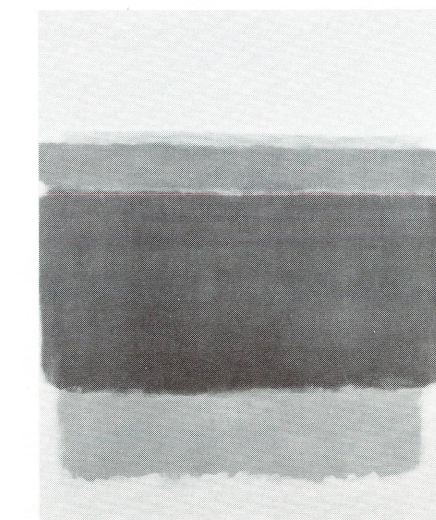
Through December 31, 1990
East Building
Concourse, Upper Level, and Tower

To celebrate the tenth anniversary of the East Building of the National Gallery of Art in 1988, a series of twenty-five new galleries were designed and built to accommodate a greatly expanded reinstallation of the twentieth-century collection, complemented by a number of major loans from private collections. The Upper Level

includes art from the beginning of the century to World War II. Fourteen works by David Smith are displayed in the skylit space of the Tower Gallery. Postwar European and American art can be seen on the Concourse Level.

In addition, three major gifts bequeathed to the National Gallery by Rita Schreiber of Los Angeles in memory of her late husband Taft B. Schreiber are on view. Two paintings, *Harlequin Musician* (1924) by Pablo Picasso and *Woman Seated in an Armchair* (1940) by Henri Matisse, and the bronze sculpture by Constantin Brancusi, *Bird in Space* (1927), will remain on display for the duration of the exhibition.

Two publications have been produced by the National Gallery in conjunction with the exhibition. The installation is made possible by a grant from American Express Company.



Mark Rothko, *Untitled*, 1949, National Gallery of Art, Gift of The Mark Rothko Foundation

CLOSING EXHIBITIONS

Still Lives of the Golden Age: Northern European Paintings from the Heinz Family Collection

Through September 4, 1989
East Building, Mezzanine

The forty-four paintings on exhibition from the Heinz Family Collection include Dutch, Flemish, and German still lifes from the late sixteenth to the early eighteenth century. The paintings range in date from the symbolic *Allegory of Summer*, painted in the 1590s by Lucas van Valckenborch and Georg Flegel, to the highly decorative work, *Flowers and Fruit*, by the early eighteenth-century artist Coenraet Roepel. The exhibition contains a wide variety of still-life types, among them floral pieces, tabletops covered with exotic fruits and cheeses, and paintings that contain reminders of the transience of life. Important artists represented include Jan Brueghel the Elder, Pieter Claesz., William Claesz. Heda, and Jan Davidsz. de Heem.

A fully illustrated catalogue accompanies the exhibition. The show will travel to the Museum of Fine Arts, Boston, October 18 to December 31, 1989.

American Paintings from the Manoogian Collection

Through September 4, 1989
West Building, Main Floor

Organized by the National Gallery of Art and the Detroit Institute of Arts, this exhibition features sixty-three paintings by nineteenth-century American artists from the collection of Mr. and Mrs. Richard A. Manoogian. This is the first public exhibition from one of the most important private collections in its field, containing an impressive range of American art including Hudson River landscapes, trompe l'oeil still lifes, genre scenes, impressionist landscapes, and figure paintings. Among the painters represented are Thomas Cole, Frederic Church, George Caleb Bingham, Albert Bierstadt, Martin Johnson Heade, William Harnett, Thomas Eakins, Mary Cassatt, and William Merritt Chase.

After its premiere at the Gallery, the show travels to the M. H. de Young Memorial Museum, San Francisco, September 25 through November 23, 1989, The Metropolitan Museum of Art, New York, December 19, 1989, through February 25, 1990, and the Detroit Institute of Arts, March 27 through May 27, 1990. A fully illustrated catalogue has been published by the National Gallery for the exhibition. The exhibition and catalogue are made possible by United Technologies Corporation.

NATIONAL GALLERY OF ART
Washington, D.C. 20565

GENERAL INFORMATION

GALLERY HOURS

Monday through Saturday 10:00 a.m. to 5:00 p.m.

Sunday noon to 9 p.m.

The telephone number for general information
is (202) 737-4215.

To change your mailing address for the Calendar of Events,
please mail a copy of your new address to the Information
Office, National Gallery of Art, Washington, D.C. 20565,
taking care to include the mailing label from your last
Calendar of Events.

The Gallery is located between 3rd and 7th Streets, N.W., on
Constitution Avenue. The East and West Buildings are
connected by an all-weather underground passage with a
moving walkway. Entrances to the West Building are on the
Mall, on 7th Street, on Constitution Avenue at 6th Street,
which has a ramp for the handicapped, and off 4th Street. The
entrance to the East Building is on 4th Street off National
Gallery Plaza and also has a ramp for the handicapped.

RESTAURANTS

Four restaurants offer luncheon and light snacks throughout
the year. Hours of operation are:

TERRACE CAFE

| | |
|-----------------|---|
| Monday-Saturday | 11:00 to 2:30 2:30 to 4:00 (dessert service) |
| Sunday | 12:00 to 4:00 |

CONCOURSE BUFFET

| | |
|-----------------|---------------|
| Monday-Saturday | 10:00 to 4:00 |
| Sunday | 12:00 to 6:00 |

CASCADE CAFE

| | |
|---------------|---|
| Monday-Friday | Closed |
| Saturday | 11:30 to 2:30 2:30 to 4:30 (dessert service) |
| Sunday | 12:00 to 3:30 |

GARDEN CAFE

| | |
|-----------------|---|
| Monday-Saturday | 11:00 to 4:00 4:00 to 4:30 (dessert service) |
| Sunday | 12:00 to 7:00 |

COVER: Ottavio Leoni, *Four Portrait Heads*,
1625-1630, Museum of Fine Arts, Boston