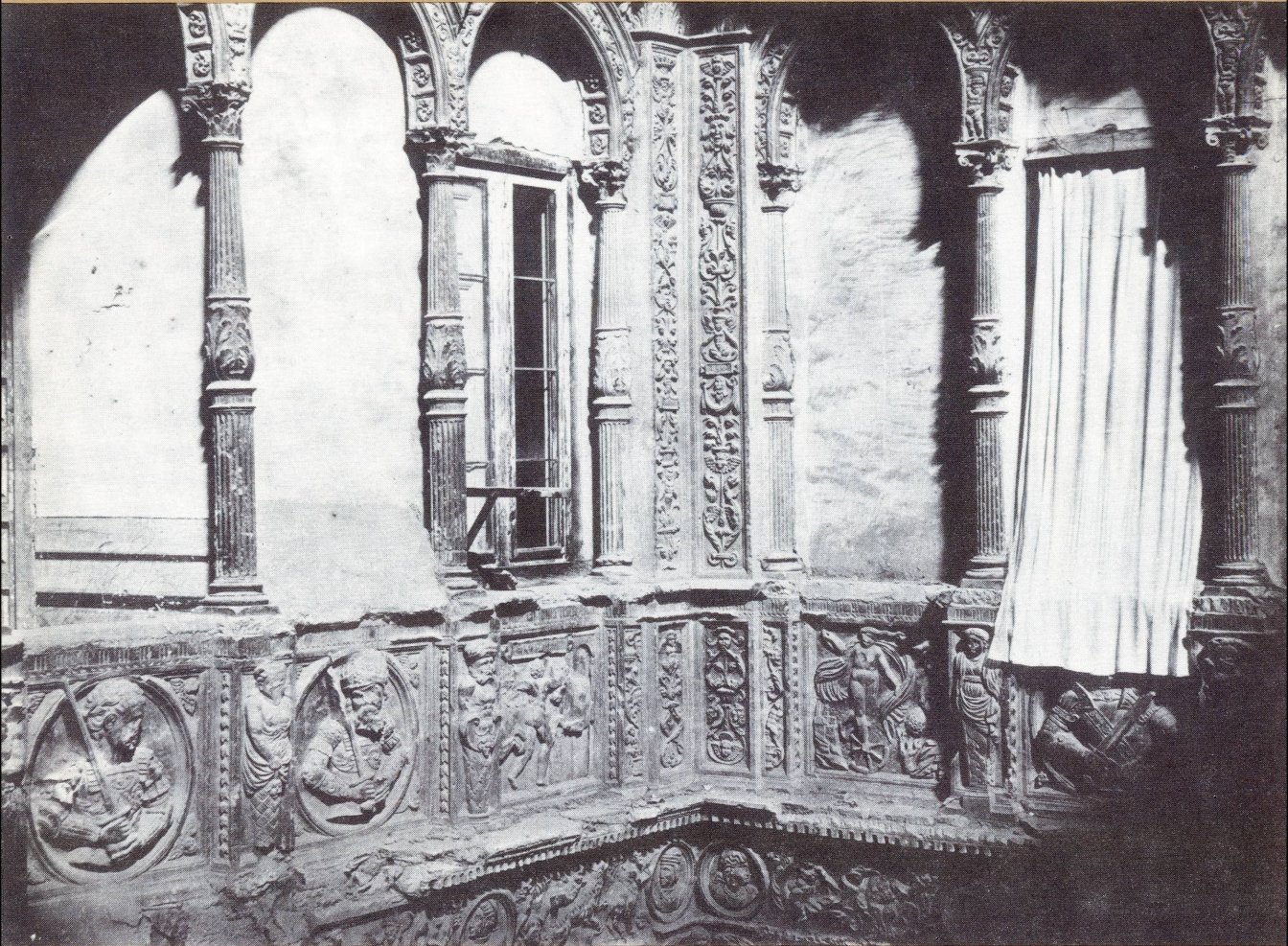


# National Gallery of Art



Calendar of Events  
*August 1994*



## AUGUST

### 1 MONDAY

12:00 Gallery Talk: *Pablo Picasso, 1881–1973* (EB)

1:00 Gallery Talk: *Comparisons in Art: The Sculpture of Degas and Rodin* (WB)

### 2 TUESDAY

10:30 Family Program: *The Language of Art* (advance registration required)

12:00 Gallery Talk: *De Kooning* (EB)

1:00 Gallery Talk: *Works from The Dorothy and Herbert Vogel Collection* (EB)

### 3 WEDNESDAY

12:00 Gallery Talk: *Jan van Eyck's "Annunciation"* (WB)

12:30 Film: *Abstract Cinema*

1:00 Gallery Talk: *Comparisons in Art: The Sculpture of Degas and Rodin* (WB)

### 4 THURSDAY

12:00 Gallery Talk: *De Kooning* (EB)

12:30 Film: *Abstract Cinema*

1:00 Gallery Talk: *Works from The Dorothy and Herbert Vogel Collection* (EB)

### 5 FRIDAY

12:00 Gallery Talk: *Jan van Eyck's "Annunciation"* (WB)

12:30 Film: *Abstract Cinema*

1:00 Gallery Talk: *Patronage in the Italian Renaissance* (WB)

### 6 SATURDAY

12:00 Gallery Talk: *Pablo Picasso, 1881–1973* (EB)

12:30 Film: *Abstract Cinema*

1:00 Gallery Talk: *Works from The Dorothy and Herbert Vogel Collection* (EB)

2:00 Films: *María Candelaria* and *The Pearl*

### 7 SUNDAY

1:00 Film: *Abstract Cinema*

1:00 Family Program: *The Artist's Eye* (advance registration required)

4:00 Summer Lecture Series: *Spencer House: A Great Eighteenth-Century London Townhouse*

6:00 Film: *Maclovia*

### 9 TUESDAY

10:30 Family Program: *The Language of Art* (advance registration required)

12:00 Gallery Talk: "A View in Venice" by Canaletto (WB)

1:00 Gallery Talk: "Let Us Now Praise Famous Men (Rauschenberg Family)" by Andy Warhol (EB)

### 10 WEDNESDAY

12:00 Gallery Talk: *Depictions of Modern Life in the Impressionist Era* (WB)

12:30 Film: *Annie Leibovitz*

1:00 Gallery Talk: *The Waking Dream: Photography's First Century* (WB)

### 11 THURSDAY

12:00 Gallery Talk: "A View in Venice" by Canaletto (WB)

12:30 Film: *Annie Leibovitz*

1:00 Gallery Talk: "Let Us Now Praise Famous Men (Rauschenberg Family)" by Andy Warhol (EB)

### 12 FRIDAY

12:00 Gallery Talk: *Depictions of Modern Life in the Impressionist Era* (WB)

12:30 Film: *Annie Leibovitz*

1:00 Gallery Talk: *The Waking Dream: Photography's First Century* (WB)

### 13 SATURDAY

12:30 Film: *Annie Leibovitz*

1:00 Gallery Talk: *Works from The Dorothy and Herbert Vogel Collection* (EB)

2:00 Films: *El Compadre Mendoza* and *Vámonos con Pancho Villa*

### 14 SUNDAY

1:00 Film: *Annie Leibovitz*

4:00 Summer Lecture Series: *Whistler in London and Chelsea*

6:00 Film: *Over on the Big Ranch*

### 16 TUESDAY

12:00 Gallery Talk: *Comparisons in Art: The Sculpture of Degas and Rodin* (WB)

1:00 Gallery Talk: *Futurism, Expressionism, and Dada: What Happens When Art Becomes Political* (EB)

### 17 WEDNESDAY

12:00 Gallery Talk: *Works from The Dorothy and Herbert Vogel Collection* (EB)

12:30 Films: *In Our Own Time: Art of the Western World, part 9* and *Elaine de Kooning Comments on Willem de Kooning's Whitney Museum Retrospective*

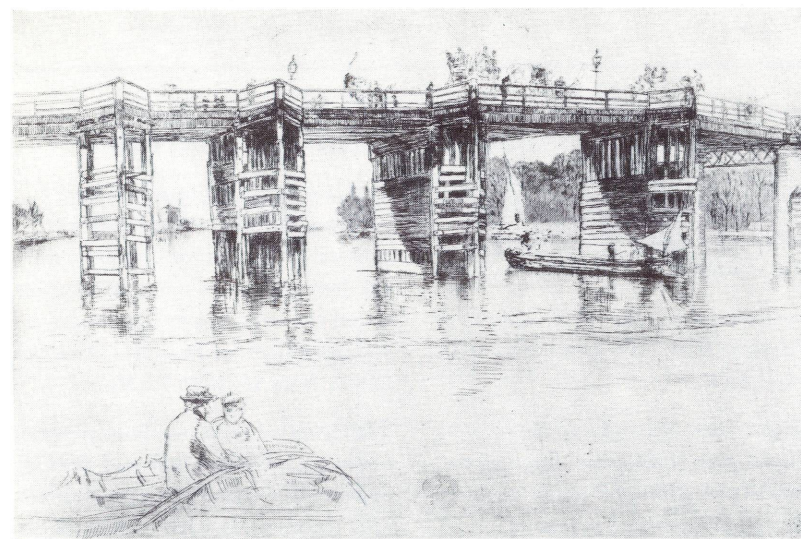
1:00 Gallery Talk: *The Waking Dream: Photography's First Century* (WB)

### 18 THURSDAY

12:00 Gallery Talk: *Reading Art: Mythology* (WB)

12:30 Films: *In Our Own Time: Art of the Western World, part 9* and *Elaine de Kooning Comments on Willem de Kooning's Whitney Museum Retrospective*

1:00 Gallery Talk: *Futurism, Expressionism, and Dada: What Happens When Art Becomes Political* (EB)



James Abbott McNeill Whistler, *Old Putney Bridge*, 1879, National Gallery of Art, Rosenwald Collection

### 19 FRIDAY

12:00 Gallery Talk: *Works from The Dorothy and Herbert Vogel Collection* (EB)

12:30 Films: *In Our Own Time: Art of the Western World, part 9* and *Elaine de Kooning Comments on Willem de Kooning's Whitney Museum Retrospective*

1:00 Gallery Talk: "Let Us Now Praise Famous Men (Rauschenberg Family)" by Andy Warhol (EB)

6:00 Films: *A New Dawn* and *Champion without a Crown*

### 20 SATURDAY

12:30 Films: *In Our Own Time: Art of the Western World, part 9* and *Elaine de Kooning Comments on Willem de Kooning's Whitney Museum Retrospective*

1:00 Gallery Talk: *Works from The Dorothy and Herbert Vogel Collection* (EB)

2:00 Films: *Aventurera* and *Salon Mexico*

### 21 SUNDAY

12:30 Films: *In Our Own Time: Art of the Western World, part 9* and *Elaine de Kooning Comments on Willem de Kooning's Whitney Museum Retrospective*

4:00 Summer Lecture Series: *London Bridges, Impressionist Horizons: French Painters in Britain from Monet to Matisse*

6:00 Films: *A New Dawn* and *Champion without a Crown*

### 23 TUESDAY

12:00 Gallery Talk: *Works from The Dorothy and Herbert Vogel Collection* (EB)

### 24 WEDNESDAY

12:00 Gallery Talk: "Italian Coast Scene with Ruined Tower" by Thomas Cole (WB)

12:30 Films: *Jonathan Borofsky's Heart Light and State of the Art*

### 25 THURSDAY

12:00 Gallery Talk: *Reading Art: Mythology* (WB)

12:30 Films: *Jonathan Borofsky's Heart Light and State of the Art*

1:00 Gallery Talk: *Works from The Dorothy and Herbert Vogel Collection* (EB)

### 26 FRIDAY

12:00 Gallery Talk: "Italian Coast Scene with Ruined Tower" by Thomas Cole (WB)

12:30 Films: *Jonathan Borofsky's Heart Light and State of the Art*

### 27 SATURDAY

12:30 Films: *Jonathan Borofsky's Heart Light and State of the Art*

2:00 Films: *Doña Barbara* and *There's the Point*

### 28 SUNDAY

1:00 Films: *The Cameraman's Revenge*, *The Scarecrow*, *Town Rat*, *Country Rat*, and *The Tale of the Fox (Le Roman de Reynard)*

4:00 Sunday Lecture: *A Stroll through the Acropolis in Classical Athens*

6:00 Films: *The Cameraman's Revenge*, *The Scarecrow*, *Town Rat*, *Country Rat*, and *The Tale of the Fox (Le Roman de Reynard)*

6:00 Films: *The Cameraman's Revenge*, *The Scarecrow*, *Town Rat*, *Country Rat*, and *The Tale of the Fox (Le Roman de Reynard)*

### 30 TUESDAY

12:00 Gallery Talk: "Diana and Endymion," by Jean-Honoré Fragonard (WB)

### 31 WEDNESDAY

12:00 Gallery Talk: "Diana and Endymion," by Jean-Honoré Fragonard (WB)

12:30 Films: *Jasper Johns: Take an Object and Elizabeth Murray*

## Gallery Talks

Tours and lectures are given by education division lecturers and National Gallery of Art staff. Unless otherwise noted, talks begin either in the Rotunda of the West Building (WB) or at the Art Information Desk in the East Building (EB).

### Sign Language Tours

Tours of the permanent collection and special exhibitions are available with a sign language interpreter for groups of five or more and may be scheduled with four weeks of notice. For adult groups, please call (202) 842-6247; for school groups, call (202) 842-6249 or write to: Education Division, Tour Scheduling, National Gallery of Art, Washington, D.C. 20565. Include the type of tour you are requesting, two alternative dates and times, the size of your group, a contact person, and an address. You will be notified in writing of the status of your request.

**Focus: The Permanent Collection**  
*Pablo Picasso, 1881–1973* (45 minutes). Margaret Wilkerson, summer lecturer. August 1 and 6 at noon (EB)

*Comparisons in Art: The Sculpture of Degas and Rodin* (60 minutes). Amy E. Day, summer lecturer. August 1 and 3 at 1:00, August 16 at noon (WB)

*Patronage in the Italian Renaissance* (45 minutes). Alicia Thomas, guest lecturer. August 5 at 1:00 (WB)

"A View in Venice" by Canaletto (Widener Collection) (20 minutes). Eric Denker, lecturer. August 9 and 11 at noon (WB)

"Let Us Now Praise Famous Men (Rauschenberg Family)" by Andy Warhol (Gift of Mr. and Mrs. William Howard Adams) (20 minutes). Patricia Margaret Kelly, summer lecturer. August 9, 11, and 19 at 1:00 (EB)

*Depictions of Modern Life in the Impressionist Era* (60 minutes). Amy E. Day, summer lecturer. August 10 and 12 at noon (WB)

*Futurism, Expressionism, and Dada: What Happens When Art Becomes Political* (60 minutes). Margaret Wilkerson, summer lecturer. August 16 and 18 at 1:00 (EB)

"Italian Coast Scene with Ruined Tower" by Thomas Cole (Gift of The Circle of the National Gallery of Art) (20 minutes). Wilford W. Scott, lecturer. August 24 and 26 at noon (WB)

"Diana and Endymion," by Jean-Honoré Fragonard (Timken Collection) (20 minutes). J. Russell Sale, lecturer. August 30 and 31 at noon (WB)

**Special Exhibitions**  
*De Kooning* (50 minutes). Robin Thorne Ptacek, lecturer. August 2 and 4 at noon (EB)

*From Minimal to Conceptual Art: Works from The Dorothy and Herbert Vogel Collection* (50 minutes). Education division staff. August 2, 4, 6, 13, 20, and 25 at 1:00; August 17, 19, and 23 at noon (EB)

*Jan van Eyck's "Annunciation"* (Andrew W. Mellon Collection) (20 minutes). Frances Feldman, lecturer. August 3 and 5 at noon (WB)

*The Waking Dream: Photography's First Century. Selections from the Gilman Paper Company Collection* (60 minutes). Education division staff. August 10, 12, and 17 at 1:00 (WB)

### Introducing Art

*Reading Art: Mythology* (50 minutes). Philip Leonard, lecturer. August 18 and 25 at noon (WB)

## Introductory Tours

*Introduction: The West Building Collection*  
Monday–Saturday 10:30, 12:30, and 2:30. Sunday 12:30, 2:30, and 4:30. West Building Rotunda

*Introduction: The East Building Collection*  
Monday–Saturday 11:30 and 1:30. Sunday 11:30, 1:30, and 3:30. East Building Art Information Desk

The following tours will examine a portion of the permanent collection in greater depth than the usual introductory highlight tour. This month the focus will be on the American collection.

*Introduction: The American Collection*  
Thursday, August 4, 11, 18, and 25 (This tour replaces the usual Thursday 10:30 Introduction to the West Building Collection)  
West Building Rotunda

Sunday, August 7, 14, 21, and 28 (This tour replaces the usual Sunday 2:30 Introduction to the West Building Collection)  
West Building Rotunda

## Audio Tours

**Permanent Collection**  
*Impressionism and Post-Impressionism*: The National Gallery of Art continues to test a new digitized system called "Inform," which allows access to interpretive commentary on paintings in the French impressionist and post-impressionist galleries. "Inform" replaces the conventional taped audio tour, which offers information on a number of paintings along a fixed route. The new self-selected approach lets the visitor choose to listen to commentary on any or all of the works programmed into the "Inform" system. In addition, the visitor may limit the length of the commentary he or she wishes to hear on a particular work, or enlarge upon it, by pressing designated keys. Narrated by Philip Conisbee, curator of French paintings.

"Inform" tours are \$4.00 (\$3.50 for senior citizens, students, and groups of ten or more). They may be rented near the Rotunda, on the Main Floor of the West Building.

*The Director's Tour*, narrated by Earl A. Powell III, discusses fifty-five through early twentieth-century masterpieces and includes some of the Gallery's best-loved paintings.

*American Art*, narrated by Nicolai Cikovsky, Jr., curator of American and British paintings, features works by Copley, Stuart, Homer, Eakins, Whistler, Bellows, and other masters from the Gallery's collection of American painting.

### Special Exhibition

*The Waking Dream: Photography's First Century. Selections from the Gilman Paper Company Collection*, narrated by Earl A. Powell III, director, National Gallery of Art, is available at the entrance to the exhibition.

Audio tours are \$3.75 (\$3.25 for senior citizens, students, and groups of 10 or more). They may be rented in the Rotunda on the Main Floor of the West Building.

Special headsets and/or scripts are available for visitors with hearing impairments. To reserve audio tours for groups, call (202) 842-6592.

## Foreign Language Tours

Foreign language tours of the permanent collection are offered on Tuesday. Tours of the West Building are at noon and begin in the Rotunda. Tours of the East Building are at 2:00 and begin at the Art Information Desk.

August 2: *French*  
August 9: *Spanish*  
August 16: *German*  
August 23: *Spanish*

## Summer Lecture Series

The Summer Lecture Series is given by National Gallery of Art staff at 4:00 in the East Building Auditorium.

**To and From the Sceptered Isle: Art, Artists, and England** continuing from July

**August 7**  
*Spencer House: A Great Eighteenth-Century London Townhouse*  
Philip Leonard, lecturer

**August 14**  
*Whistler in London and Chelsea*  
Eric Denker, lecturer

**August 21**  
*London Bridges, Impressionist Horizons: French Painters in Britain from Monet to Matisse*  
Martha Richler Wise, guest lecturer

## Sunday Lecture

**August 28**  
*A Stroll through the Acropolis in Classical Athens*  
Amy E. Day, summer lecturer



## National Gallery of Art

### Film Programs

East Building Auditorium

*Listening devices are available at the Art Information Desk for visitors with hearing impairments.*

"The Golden Age of Mexican Cinema: 1933–1949," a four-program survey of this pivotal period in Mexican film production, will be presented on weekends from August 6–27. The series is organized thematically and comprises twelve films ranging from Emilio Fernández's and Gabriel Figueroa's understated, monumental *María Candelaria* (1943) to Julio Bracho's intense, melodramatic *A New Dawn* (1943). The series has been organized by the UCLA Film and Television Archive, with additional assistance from Patricia Aufderheide, School of Communication, The American University. On Sunday, August 28, a program devoted to the pioneer French-Polish animator Ladislav Starewicz will include *The Tale of the Fox* (1931), a tour de force adaptation of Goethe's *Reineke Fuchs* and several distinctive short films, all of which feature his ingenious animated puppet characters. The program is presented through the courtesy of the Pacific Film Archive and Madame Beatrice Martin.

*Abstract Cinema* (Arts Council of Great Britain, 1993, video, 52 minutes); August 3–6 at 12:30, August 7 at 1:00.

*María Candelaria* (Emilio Fernández, 1943, 101 minutes) and *The Pearl* (Emilio Fernández, 1945, 81 minutes); August 6 at 2:00.

*Maclovía* (Emilio Fernández, 1948, 99 minutes); August 7 at 6:00.

*Annie Leibovitz* (Rebecca Frayn, 1993, video, 55 minutes); August 10–13 at 12:30, August 14 at 1:00.

## CONTINUING EXHIBITIONS

### The Waking Dream: Photography's First Century. Selections from the Gilman Paper Company Collection

through September 11, 1994  
West Building, Main Floor Galleries 72 through 79

"Was it a vision, or a waking dream?" A line from John Keats' poem "Ode to a Nightingale" inspired the title for this exhibition.

Selected from one of the world's most important private collections of photographs, the exhibition presents more than 250 exceptional images, dating from the birth of photography in 1839 through its first century. Including photographs from Europe, the Near East, Asia, and the United States, the exhibition not only chronicles the medium's progression as an art form but also records a remarkable assortment of memorable characters, architecture, and events. William Henry Fox Talbot, Julia Margaret Cameron, Mathew Brady, Carleton Watkins, Man Ray, Laszlo Moholy-Nagy, Edward Weston, and Walker Evans are but a few of the



William Henry Fox Talbot, *The Open Door*, 1844, Gilman Paper Company, courtesy National Gallery of Art

many artists represented in the show. Masterly and compelling images by obscure and even anonymous figures

### Family Programs

*The Language of Art*, a two-hour program of Gallery tours and art activities designed for families with children ages six to ten, will focus on visual elements in art. The program will be offered on Tuesdays, August 2 and 9, from 10:30 to 12:30.

*The Artist's Eye*, a two-hour program featuring a Gallery tour and drawing experience for families with children ages eleven to thirteen, will focus on modern art on Sunday, August 7, from 1:00 to 3:00

Programs are designed for children with an accompanying parent. Each program is free, but space is limited; please register by calling (202) 789-3030.

### Family Guides to the Collection

*West Building Highlights* is an open-ended tour of ten important works in the collection from the Renaissance through the nineteenth century, with emphasis on styles, subjects, and symbols in Western art. Available at the West Building Art Information Desk.

*Portraits & Personalities* explores seven famous works including Jacques-Louis David's *Napoleon in His Study* and two marble busts of Voltaire by Houdon. Available at the West Building Art Information Desk.

*Shapes & Patterns*, of particular interest to younger visitors, focuses on the East Building's art and architecture. Available at the East Building Art Information Desk.

Family Guides are made possible by a grant from the Vira I. Heinz Endowment.

## CONTINUING EXHIBITIONS

### Gemini G.E.L.: Recent Prints and Sculpture

through October 2, 1994  
West Building, Ground Floor Central Gallery



Malcolm Morley, *Our Tramp Steamer Hugging the Horizon Off Coconut Island II*, 1987, National Gallery of Art, Gift of Gemini G.E.L. and the Artist

A fresh look at currents in contemporary art is presented in graphics and sculpture from the Los Angeles workshop Gemini G.E.L. (Graphic

Editions Limited). More than seventy works created over the last ten years by some of the foremost artists working today are on view. James Turrell,

### From Minimal to Conceptual Art: Works from The Dorothy and Herbert Vogel Collection

through November 27, 1994  
East Building, Mezzanine Level



Daniel H. Graham, *Sunrise and Sunset* (detail), 1969, The Dorothy and Herbert Vogel Collection, Promised Gift of Dorothy and Herbert Vogel

New York collectors Dorothy and Herbert Vogel have assembled a comprehensive group of contemporary art from the 1960s to the present. Focusing on the areas for which the Vogels' connoisseurship is best known — minimal, postminimal, and conceptual art — the exhibition marks the first major showing of the Vogel collection since it was trans-

ferred to the National Gallery of Art in 1991. The works on view, ranging in media from prints, drawings, and photographs to paintings and sculpture, illustrate the radical expansion of intellectual and stylistic expression in the United States and Europe since the 1960s.

Among the forty-nine artists represented in the exhibition are Vito

Acconci, Jennifer Bartlett, Dan Flavin, Robert Grosvenor, On Kawara, Richard Nonas, Nam June Paik, Edda Renouf, and Klaus Rinke. An illustrated catalogue accompanies the exhibition. The exhibition is made possible in part by The Circle of the National Gallery of Art.

### Jan van Eyck's *Annunciation*

through September 5, 1994  
West Building, Main Floor Gallery 40

Jan van Eyck's early Netherlandish masterpiece, the *Annunciation* (c. 1434/1436), one of the jewels of the National Gallery of Art's permanent collection, is on view after two years in the Gallery's conservation laboratory. A magnificently detailed tour de force of Christian symbolism, the painting portrays the angel Gabriel announcing to the Virgin Mary that she will be the mother of Jesus. Acquired by Andrew W. Mellon from Russia's Imperial Hermitage Museum in 1930, the *Annunciation* is an important part of the founding collection of the Gallery given to the nation.

Two manuscript illuminations depicting the Annunciation in Books of Hours — one from the collection of the J. Paul Getty Museum, Malibu, and the other from The Walters Art Gallery, Baltimore — are also on display. The exhibition and accompanying tour de force of Christian symbolism, the painting portrays the angel Gabriel announcing to the Virgin Mary that she will be the mother of Jesus. Acquired by Andrew W. Mellon from Russia's Imperial Hermitage Museum in 1930, the *Annunciation* is an important part of the founding collection of the Gallery given to the nation.

Jan van Eyck, *The Annunciation*, c. 1434/1436, National Gallery of Art, Andrew W. Mellon Collection



## CONTINUING EXHIBITIONS

### Willem de Kooning: Paintings

through September 5, 1994 East Building, Upper and Mezzanine Levels

To honor Willem de Kooning's ninetieth birthday, seventy-six of his finest paintings have been brought together in this exhibition. These works span nearly fifty years of his long, productive career.

The exhibition opens with the artist's depictions of male and female figures made in New York City in the late 1930s and early 1940s. These are followed by a diverse selection of works from the late 1940s, including black and white compositions, color abstractions, and a second series of woman paintings. In 1950 de Kooning embarked on his third series of woman paintings, executed in a vigorously gestural style. Many of these are included here along with a group of "urban" abstractions from the mid-1950s and expansive "highway landscapes" from the end of the decade. In 1963 de Kooning moved permanently to East Hampton, Long Island, where he explored the figure and landscape in lushly colored paintings during the 1960s and 1970s. The exhibition ends with nine large, calligraphic compositions from the 1980s that are among the most luminous works of the artist's career.

The exhibition is organized by the National Gallery of Art in association with the Tate Gallery, London, and The Metropolitan Museum of Art, New York. It is accompanied by a fully illustrated catalogue. The exhibition will travel to The Metropolitan Museum of Art, October 11, 1994–January 8, 1995, and the Tate Gallery, February 16–May 7, 1995.



Willem de Kooning, *Black Friday*, 1948, The Art Museum, Princeton University, Gift of H. Gates Lloyd, Class of 1923, and Mrs. Lloyd, in honor of the Class of 1923

*Willem de Kooning*, a twelve-minute video program on de Kooning's life and work, is shown continuously in the East Building Small Auditorium, beginning daily at noon (schedule subject to change). For visitors with hearing impairments, transcripts are available at

the East Building Art Information Desk. An indemnity for the exhibition has been granted by the Federal Council on the Arts and the Humanities. The video presentation and exhibition are made possible by J.P. Morgan & Co. Incorporated.

### Jasper Francis Cropsey's *The Spirit of War* and *The Spirit of Peace*

through April 16, 1995  
West Building, Main Floor Gallery 60

Originally intended as a pair, *The Spirit of War* (1851) from the National Gallery of Art and *The Spirit of Peace* (1851) from the Woodmere Art Museum, Philadelphia, are two of the most significant works by American painter Jasper Francis Cropsey. This is the first time they have been exhibited

together in public since 1857. *The Spirit of Peace* is a serene, twilight, semitropical coastal scene with a classical temple, a distant harbor town, and men and women reflecting, walking, and dancing peacefully. *The Spirit of War* is its opposite — a tempestuous mountain landscape with a fortified castle,

knights on horseback, and a plundered village with approaching enemy troops. Wall texts with Cropsey's own descriptions give insight into the two paintings. The exhibition brochure is made possible through the generosity of Mrs. John C. Newington.

## CLOSING EXHIBITION

### Fanciful Flourishes: Ornament in European Graphic Art and Related Objects, 1300–1800

through August 21, 1994  
East Building, Ground Level

Ninety prints, drawings, illustrated books, and decorative objects from the National Gallery of Art's collections present the charm, imagination, and delightful, if sometimes outrageous, wit of graphic and decorative arts over five centuries. Combining works on paper and three-dimensional objects such as ceramics, bronzes, armor, and furniture, the exhibition demonstrates the long-term relationship between the graphic and decorative arts.

The exhibition is organized according to the style of ornament depicted — grotesques, arabesques, calligraphy, rocaille — or the kinds of objects the designs were intended to decorate. Among the works on paper are ingenious designs by eminent artists for functional objects as well as fantastic decorative works produced for their own sake.

### Exhibition Catalogues

*Willem de Kooning: Paintings*  
\$25.00 (softbound)  
\$55.00 (hardbound)

*From Minimal to Conceptual Art: Works from The Dorothy and Herbert Vogel Collection*  
\$25.00 (softbound)

*Gemini G.E.L.: Recent Prints and Sculpture*  
\$25.00 (softbound)

*The Waking Dream: Photography's First Century. Selections from the Gilman Paper Company Collection*  
\$57.50 (hardbound)

Available from the National Gallery of Art's publications service. Sales Info (202) 842-6466 Mail Order (301) 322-5900



NATIONAL GALLERY OF ART  
Washington, D.C. 20565

## GENERAL INFORMATION

The National Gallery of Art and its collections belong to the people of the United States of America. European and American paintings, sculpture, decorative arts, and works on paper are displayed in the permanent collection galleries, and temporary exhibitions of art from countries and cultures throughout the world are presented on a regular basis. Admission is free.

### HOURS

Monday through Saturday 10:00 a.m. to 5:00 p.m.  
Sunday 11:00 a.m. to 6:00 p.m.

For general information call (202) 737-4215.

The Gallery is located between 3rd and 7th Streets, N.W., on Constitution Avenue. The nearest Metro stops are Judiciary Square on the Red Line, Archives on the Yellow/Green Lines, Smithsonian on the Blue/Orange Lines. Metrobus stops are located on 4th Street and 7th Street. The East and West Buildings are connected by an all-weather underground passage with a moving walkway. Entrances to the West Building are on the Mall, on 7th Street, on Constitution Avenue at 6th Street, and on 4th Street. The entrance to the East Building is on 4th Street.

### ASSISTANCE FOR PEOPLE WITH DISABILITIES

For general information call (202) 842-6690.  
Telecommunications Device for the Deaf (TDD): (202) 842-6176.

The 6th Street entrance to the West Building and the 4th Street entrance to the East Building are accessible to visitors with disabilities. Limited parking is available at the East Building entrance.

Assistive listening devices for the East Building Auditorium are available on a free-loan basis at the East Building Art Information Desk.

### RESTAURANTS

Four restaurants offer luncheon and light fare.

Hours are:

#### CONCOURSE BUFFET

Monday-Friday	10:00 to 3:00
Saturday	10:00 to 4:00
Sunday	11:00 to 4:30

#### GARDEN CAFE

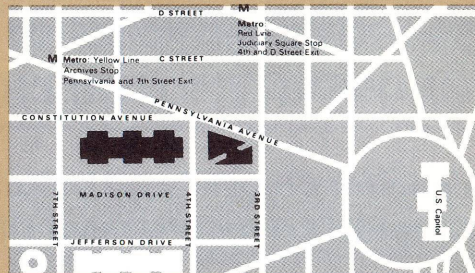
Monday-Friday	11:30 to 3:00
Saturday	11:30 to 3:00
Sunday	12:00 to 4:00

#### CASCADE ESPRESSO BAR

Monday-Friday	12:00 to 4:30
Saturday	12:00 to 4:30
Sunday	12:00 to 5:30

#### TERRACE CAFE

Monday-Friday	11:30 to 3:00
Saturday	11:30 to 3:00
Sunday	12:00 to 4:00



Cover: Charles Clifford, *Courtyard of the House Known as Los Infantes*,  
*Zaragoza*, 1860, Gilman Paper Company, courtesy National Gallery of Art