

# exhibitions

OPENING EXHIBITION

## Encounters with Modern Art: Works from the Rothschild Family Collections

September 22, 1996 through  
January 26, 1997  
East Building, mezzanine level

Herbert and Nannette Rothschild's interest in modern art was inspired and guided by their daughter, the noted abstract painter Judith Rothschild, and by their instinctive enthusiasm for art. Many of the objects in their collection were acquired in Paris, where the Rothschilds became acquainted with eminent members of the French art community, including Georges Braque, Jean Arp, Constantin

Brancusi, Sonia Delaunay-Terk, Gino Severini, and Fernand Léger. Herbert and Nannette Rothschild viewed collecting as a personal adventure, pursuing pictures for which they felt a deep affinity.

The scope of their holdings embraces many schools of modern European art, including futurism, cubism, constructivism, and de Stijl. Juan Gris and Piet Mondrian are shown in some depth, while Brancusi, Francis Picabia, and Natalia Goncharova are represented by individual works of particular significance. Also included are four works by Judith Rothschild that reflect various phases of her career. The exhibition was organized by the National Gallery of Art, Washington, and the Philadelphia Museum of Art, in collaboration with The Judith Rothschild Foundation.



Adolph Menzel, *Half-length Portrait of a Girl*, c. 1845–1847, Staatliche Museen zu, Berlin, Kupferstichkabinett



OPENING EXHIBITION

## Adolph Menzel (1815–1905): Between Romanticism and Impressionism

September 15, 1996 through  
January 5, 1997  
East Building, upper and  
mezzanine levels

This exhibition comprises more than 120 of the finest paintings, drawings, pastels, and watercolors by Adolph Menzel, the leading artist

in Berlin in the second half of the nineteenth century. Menzel, a prolific draftsman, drew obsessively to observe and record the world around him. He also executed a series of large paintings on the life of Prussian monarch Frederick the Great. In *Frederick the Great's Flute Concert at Sanssouci* (Staatliche Museen zu Berlin, Alte Nationalgalerie), which shows Frederick playing for his guests at Sanssouci Palace, Menzel brilliantly captures a sense of the historical time and place. Many of his 1840s works, with their free execution, anticipated the work of the French impressionists

Juan Gris, *The Coffee Mill*, 1916, The Judith Rothschild Foundation, New York

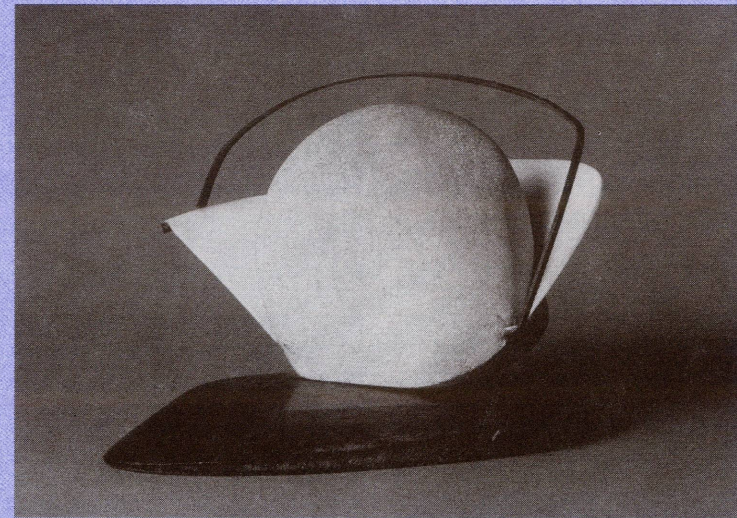
by more than a decade. In the 1870s Menzel turned to contemporary events of national interest in such paintings as *King Wilhelm I's Departure to the Army on July 31, 1870* and the monumental *Hall in a Rolling Mill*, a masterly depiction of industrial life in the nineteenth century, both from the Staatliche Museen zu Berlin, Alte Nationalgalerie.

*The exhibition is supported by an indemnity from the Federal Council on the Arts and the Humanities.*

# calendar

SEPTEMBER

<p><b>1</b> SUNDAY</p> <p>1:00 <b>Film:</b> <i>Time in the Sun</i> (eba)</p> <p>4:00 <b>Sunday Lecture:</b> <i>Caravaggio, Music, and the "Rest on the Flight Into Egypt"</i> (eba)</p> <hr/> <p><b>3</b> TUESDAY</p> <p>11:00 <b>Gallery Talk:</b> <i>Olmec Art of Ancient Mexico</i> (eb)</p> <p>12:00 <b>Gallery Talk:</b> <i>Sports and Art</i> (wb)</p> <hr/> <p><b>4</b> WEDNESDAY</p> <p>12:00 <b>Gallery Talk:</b> <i>"Tama, the Japanese Dog" by Edouard Manet</i> (eb)</p> <p><b>5</b> THURSDAY</p> <p>1:00 <b>Gallery Talk:</b> <i>Thomas Eakins: The Rowing Pictures</i> (eb)</p> <p><b>6</b> FRIDAY</p> <p>11:00 <b>Gallery Talk:</b> <i>Olmec Art of Ancient Mexico</i> (eb)</p> <p>12:00 <b>Gallery Talk:</b> <i>Sports and Art</i> (wb)</p> <p>1:00 <b>Gallery Talk:</b> <i>Thomas Eakins: The Rowing Pictures</i> (eb)</p> <p><b>7</b> SATURDAY</p> <p>12:00 <b>Gallery Talk:</b> <i>"Tama, the Japanese Dog" by Edouard Manet</i> (eb)</p> <p>2:30 <b>Films:</b> <i>The Abyss, The Little Angel, and Toward the Light</i> (eba)</p> <p><b>8</b> SUNDAY</p> <p>12:00 <b>Gallery Talk:</b> <i>"Tama, the Japanese Dog" by Edouard Manet</i> (eb)</p> <p>2:00 <b>Gallery Talk:</b> <i>Thomas Eakins: The Rowing Pictures</i> (eb)</p> <p>4:00 <b>Sunday Lecture:</b> <i>Eakins, The Biglin Brothers, and The World of Professional Rowing</i> (eba)</p> <p>6:00 <b>Films:</b> <i>I.N.R.I. and Hamlet</i> (eba)</p>	<p><b>10</b> TUESDAY</p> <p>11:00 <b>Gallery Talk:</b> <i>Olmec Art of Ancient Mexico</i> (eb)</p> <p>12:00 <b>Gallery Talk:</b> <i>Olmec Art of Ancient Mexico</i> (eb)</p> <p>1:00 <b>Gallery Talk:</b> <i>Luminism: Spirituality Redefined</i> (wb)</p> <p>2:00 <b>Gallery Talk:</b> <i>Thomas Eakins: The Rowing Pictures</i> (eb)</p> <p><b>11</b> WEDNESDAY</p> <p>12:00 <b>Gallery Talk:</b> <i>"Tama, the Japanese Dog" by Edouard Manet</i> (eb)</p> <p>12:30 <b>Film:</b> <i>The Hermitage: A Russian Odyssey, part 1</i> (eba)</p> <p>1:00 <b>Gallery Talk:</b> <i>Luminism: Spirituality Redefined</i> (wb)</p> <p><b>12</b> THURSDAY</p> <p>12:00 <b>Gallery Talk:</b> <i>Thomas Eakins: The Rowing Pictures</i> (eb)</p> <p>12:00 <b>Gallery Talk:</b> <i>Sports and Art</i> (wb)</p> <p>12:30 <b>Film:</b> <i>The Hermitage: A Russian Odyssey, part 1</i> (eba)</p> <p>1:00 <b>Gallery Talk:</b> <i>"Saint George and the Dragon" by Sodoma</i> (wb)</p> <p><b>13</b> FRIDAY</p> <p>11:00 <b>Gallery Talk:</b> <i>Olmec Art of Ancient Mexico</i> (eb)</p> <p>12:30 <b>Film:</b> <i>The Hermitage: A Russian Odyssey, part 1</i> (eba)</p> <p>1:00 <b>Gallery Talk:</b> <i>"Saint George and the Dragon" by Sodoma</i> (wb)</p> <p><b>14</b> SATURDAY</p> <p>12:00 <b>Gallery Talk:</b> <i>Olmec Art of Ancient Mexico</i> (eb)</p> <p>12:30 <b>Film:</b> <i>The Hermitage: A Russian Odyssey, part 1</i> (eba)</p> <p>2:30 <b>Film:</b> <i>Lulu</i> (eba)</p> <p><b>15</b> SUNDAY</p> <p>12:00 <b>Gallery Talk:</b> <i>Olmec Art of Ancient Mexico</i> (eb)</p> <p>1:00 <b>Film:</b> <i>The Hermitage: A Russian Odyssey, part 1</i> (eba)</p> <p>2:00 <b>Gallery Talk:</b> <i>"Saint George and the Dragon" by Sodoma</i> (wb)</p> <p>4:00 <b>Sunday Lecture:</b> <i>Adolph Menzel: Prussian Impressionist?</i> (eba)</p> <p>6:00 <b>Film:</b> <i>The House by the Sea</i> (eba)</p>	<p><b>17</b> TUESDAY</p> <p>11:00 <b>Gallery Talk:</b> <i>Olmec Art of Ancient Mexico</i> (eb)</p> <p>12:00 <b>Gallery Talk:</b> <i>Italian Renaissance Art</i> (wb)</p> <p>12:00 <b>Lecture Series:</b> <i>Olmec: Mesoamerica's Mother Culture</i> (eba)</p> <p>2:00 <b>Gallery Talk:</b> <i>"Saint George and the Dragon" by Sodoma</i> (wb)</p> <p><b>18</b> WEDNESDAY</p> <p>12:00 <b>Gallery Talk:</b> <i>Olmec Art of Ancient Mexico</i> (eb)</p> <p>12:30 <b>Film:</b> <i>The Hermitage: A Russian Odyssey, part 2</i> (eba)</p> <p><b>19</b> THURSDAY</p> <p>12:00 <b>Gallery Talk:</b> <i>"Saint George and the Dragon" by Sodoma</i> (wb)</p> <p>12:30 <b>Film:</b> <i>The Hermitage: A Russian Odyssey, part 2</i> (eba)</p> <p>1:00 <b>Gallery Talk:</b> <i>"Boy in a Red Waistcoat" by Paul Cézanne</i> (wb)</p> <p><b>20</b> FRIDAY</p> <p>11:00 <b>Gallery Talk:</b> <i>Olmec Art of Ancient Mexico</i> (eb)</p> <p>12:00 <b>Gallery Talk:</b> <i>Olmec Art of Ancient Mexico</i> (eb)</p> <p>12:30 <b>Film:</b> <i>The Hermitage: A Russian Odyssey, part 2</i> (eba)</p> <p>1:00 <b>Gallery Talk:</b> <i>"Boy in a Red Waistcoat" by Paul Cézanne</i> (wb)</p> <p><b>21</b> SATURDAY</p> <p>12:00 <b>Gallery Talk:</b> <i>Italian Renaissance Art</i> (wb)</p> <p>12:30 <b>Film:</b> <i>The Hermitage: A Russian Odyssey, part 2</i> (eba)</p> <p>2:30 <b>Film:</b> <i>The Joyless Street</i> (eba)</p> <p><b>22</b> SUNDAY</p> <p>12:00 <b>Gallery Talk:</b> <i>Italian Renaissance Art</i> (wb)</p> <p>1:00 <b>Film:</b> <i>The Hermitage: A Russian Odyssey, part 2</i> (eba)</p> <p>2:00 <b>Gallery Talk:</b> <i>"Boy in a Red Waistcoat" by Paul Cézanne</i> (wb)</p> <p>4:00 <b>Sunday Lecture:</b> <i>Royal Prague: Legends, History, Monuments</i> (eba)</p> <p>6:00 <b>Films:</b> <i>Dora Brandes and The Dangerous Age for Women</i> (eba)</p>	<p><b>24</b> TUESDAY</p> <p>11:00 <b>Gallery Talk:</b> <i>Olmec Art of Ancient Mexico</i> (eb)</p> <p>12:00 <b>Gallery Talk:</b> <i>Olmec Art of Ancient Mexico</i> (eb)</p> <p>12:00 <b>Lecture Series:</b> <i>Shamanic Ecstasy and Transformation in Olmec Art</i> (eba)</p> <p>2:00 <b>Gallery Talk:</b> <i>"Boy in a Red Waistcoat" by Paul Cézanne</i> (wb)</p> <p><b>25</b> WEDNESDAY</p> <p>12:00 <b>Gallery Talk:</b> <i>Italian Renaissance Art</i> (wb)</p> <p>12:30 <b>Film:</b> <i>The Hermitage: A Russian Odyssey, part 3</i> (eba)</p> <p><b>26</b> THURSDAY</p> <p>12:00 <b>Gallery Talk:</b> <i>"Boy in a Red Waistcoat" by Paul Cézanne</i> (wb)</p> <p>12:30 <b>Film:</b> <i>The Hermitage: A Russian Odyssey, part 3</i> (eba)</p> <p>1:00 <b>Gallery Talk:</b> <i>Netherlandish Painting and Italian Renaissance Art</i> (wb)</p> <p><b>27</b> FRIDAY</p> <p>11:00 <b>Gallery Talk:</b> <i>Olmec Art of Ancient Mexico</i> (eb)</p> <p>12:00 <b>Gallery Talk:</b> <i>Italian Renaissance Art</i> (wb)</p> <p>12:30 <b>Film:</b> <i>The Hermitage: A Russian Odyssey, part 3</i> (eba)</p> <p>1:00 <b>Gallery Talk:</b> <i>Netherlandish Painting and Italian Renaissance Art</i> (wb)</p> <p><b>28</b> SATURDAY</p> <p>12:00 <b>Gallery Talk:</b> <i>Olmec Art of Ancient Mexico</i> (eb)</p> <p>12:30 <b>Film:</b> <i>The Hermitage: A Russian Odyssey, part 3</i> (eba)</p> <p>2:30 <b>Film:</b> <i>The Merry-Go-Round</i> (eba)</p> <p><b>29</b> SUNDAY</p> <p>12:00 <b>Gallery Talk:</b> <i>Olmec Art of Ancient Mexico</i> (eb)</p> <p>1:00 <b>Film:</b> <i>Tragedy of the Street</i> (eba)</p> <p>2:00 <b>Gallery Talk:</b> <i>Netherlandish Painting and Italian Renaissance Art</i> (wb)</p> <p>4:00 <b>Sunday Lecture:</b> <i>Goya's Modernity</i> (eba)</p> <p>6:00 <b>Film:</b> <i>Art City: Making It in Manhattan</i> (eba)</p>
---	--	---	---



Naum Gabo, *Construction*, 1933, The Judith Rothschild Foundation, New York

**Legend**

eb East Building art information desk

eba East Building auditorium

wb West Building Rotunda

See listings under Guided Tours for daily tours of the collections and foreign language tours.

# programs

## Gallery Talks

Talks are given by education division lecturers and National Gallery of Art staff. Unless otherwise noted, talks begin in either the Rotunda of the West Building (wb) or at the ground level art information desk in the East Building (eb). Certain presentations will be given in the West Building lecture hall (wblh) and the East Building auditorium (eba).

## Focus: The Permanent Collection

*Sports and Art* (60 minutes). Wilford W. Scott, lecturer. September 3, 6, and 12 at noon (wb)

*"Tama, the Japanese Dog" by Edouard Manet* (Collection of Mr. and Mrs. Paul Mellon) (20 minutes). Eric Denker, lecturer. September 4, 7, 8, and 11 at noon (eb)

*Luminism: Spirituality Redefined* (50 minutes). Paul Kuglitsch, intern. September 10 and 11 at 1:00 (wb)

*"Saint George and the Dragon" by Sodoma* (Samuel H. Kress Collection) (20 minutes). J. Russell Sale, lecturer. September 12 and 13 at 1:00; September 15 and 17 at 2:00; September 19 at noon (wb)

*"Boy in a Red Waistcoat" by Paul Cézanne* (Collection of Mr. and Mrs. Paul Mellon) (20 minutes). Frances Feldman, lecturer. September 19 and 20 at 1:00; September 22 and 24 at 2:00; September 26 at noon (wb)

*Netherlandish Painting and Italian Renaissance Art* (60 minutes). Philip L. Leonard, lecturer. September 26 and 27 at 1:00; September 29 at 2:00 (wb)

## Special Exhibitions

*Thomas Eakins: The Rowing Pictures* (50 minutes). Eric Denker, lecturer. September 5 and 6 at 1:00; September 8 and 10 at 2:00; September 12 at noon (eb)

*Olmec Art of Ancient Mexico* (45 minutes). education division staff. September 3, 6, 10, 13, 17, 20, 24, and 27 at 11:00; September 10, 14, 15, 18, 20, 24, 28, 29 at noon (eb)

## Introducing Art

*Italian Renaissance Art* (45 minutes). Frances Feldman, lecturer. September 17, 21, 22, 25, and 27 at noon (wb)



## Lectures

### Sunday Lectures

Lectures are given at 4:00 in the East Building auditorium

### SEPTEMBER 1

*Caravaggio, Music, and the "Rest on the Flight Into Egypt"* Franca Camiz, adjunct professor in art history, Rome campuses of Trinity College and Temple University

### SEPTEMBER 8

*Eakins, The Biglin Brothers, and The World of Professional Rowing* William Lanouette, author, Washington, DC

### SEPTEMBER 15

*Adolph Menzel: Prussian Impressionist?* Françoise Forster-Hahn, professor, department of the history of art, University of California, Riverside

### SEPTEMBER 22

*Royal Prague: Legends, History, Monuments* Anna Gonosová, associate professor, art history department, University of California, Irvine

### SEPTEMBER 29

*Goya's Modernity* Janis Tomlinson, art historian, McLean, VA

## Special Lecture Series

Tuesdays at noon  
September 17 through October 8, 1996  
East Building auditorium

### The Olmec World

### SEPTEMBER 17

*Olmec: Mesoamerica's Mother Culture* Richard A. Diehl, professor of anthropology, University of Alabama, Tuscaloosa

### SEPTEMBER 24

*Shamanic Ecstasy and Transformation in Olmec Art* Peter T. Furst, research associate, The University Museum of Anthropology and Archaeology, University of Pennsylvania, Philadelphia

### OCTOBER 1

*Powers of Rain and Maize: Olmec Gods and Ritual* Karl A. Taube, associate professor, department of anthropology, University of California at Riverside

### OCTOBER 8

*Highland Mexico and the Olmec* David C. Grove, professor, department of anthropology, University of Illinois at Urbana-Champaign

Jean-Baptiste-Camille Corot, *Olevano, the Town and the Rocks, 1827*, Kimbell Art Museum, Fort Worth, Texas

## Audio Tours

### Permanent Collection

*Impressionism and Post-Impressionism*. "Inform," a digitized system that allows individualized access to interpretive commentary on paintings in the French impressionist and post-impressionist galleries. The self-selected approach lets the visitor choose the length of commentary on any or all of the works programmed into the "Inform" system. Narrated by Philip Conisbee, curator of French paintings.

*The Director's Tour*, narrated by Earl A. Powell III, discusses fifteenth- through early twentieth-century masterpieces and includes some of the Gallery's best-loved paintings.

Both permanent collection tours may be rented in the Rotunda, on the main floor, West Building.

### Special Exhibitions

*Olmec Art of Ancient Mexico*, narrated by Earl A. Powell III, director, is available at the entrance to the exhibition.

All audio tours are \$4.00 (\$3.50 for senior citizens, students, and groups of ten or more).

## Guided Tours

### Introductory Tours

*Introduction: The West Building Collection*  
Monday–Friday 10:30 and 12:30  
Saturday 10:30, 12:30, and 2:30  
Sunday 12:30, 2:30, and 4:30  
West Building Rotunda

*Introduction: The East Building Collection*  
Monday–Saturday 11:30 and 1:30  
Sunday 1:30 and 3:30  
East Building art information desk

*Introduction: The American Renaissance Collection*  
Monday and Friday at 2:30  
West Building Rotunda

*Introduction: The Italian Renaissance Collection*  
Wednesday at 2:30  
West Building Rotunda

*Introduction: Nineteenth-Century French Painting (new tour)*  
Tuesday and Thursday at 2:30  
West Building Rotunda

### Foreign Language Tours

Foreign language tours of the permanent collection are offered on Tuesday and Thursday. Tours of the West Building are at noon and begin in the Rotunda. Tours of the East Building are at 2:00 and begin at the art information desk. A Spanish language tour of the American art collection is being offered monthly in the West Building at 12:00.

September 3: French  
September 5: Spanish  
September 10: Spanish  
September 17: German  
September 19: Russian  
September 24: Italian  
September 26: Japanese  
September 26: American Art in Spanish

# programs

## Video Program

*Olmec Art of Ancient Mexico*, produced by the National Gallery of Art, relates the twentieth-century discovery of this powerful and dynamic artistic style. Archival and new footage, shot on location, presents past and present archaeological finds at major Olmec sites in Mexico. Shown continuously in the East Building small auditorium, within the exhibition (20 minutes).



Olmec, *Fish Effigy Vessel*, Early Formative Period, Museo Nacional de Antropología, Mexico City

## Charitable Giving

Since the creation of the National Gallery of Art, many generous individuals from across the nation have made charitable gifts, at a variety of levels, to support our primary activities: art acquisition and conservation, scholarly and scientific research, exhibitions, and educational outreach programs.

Numerous opportunities exist for supporting the work of the National Gallery of Art, both now and in the future, and we welcome your patronage. If you would like more information about making a gift, please call or write:

Development Office  
National Gallery of Art  
Washington, DC 20565  
(202) 842-6372

## Music at the Gallery

Concerts will resume October 6.



Asta Nielsen in *Lulu*, 1923  
(September 14 at 2:30)

## September Films

*Time in the Sun* (Sergei Eisenstein, 1939, 59 minutes); September 1 at 1:00

*The Abyss* (Urban Gad and Asta Nielsen, 1910, Danish intertitles translated live, 23 minutes), *The Little Angel* (Urban Gad and Asta Nielsen, 1913, Danish intertitles translated live, 30 minutes), and *Toward the Light* (Holger-Madsen and Asta Nielsen, 1918, Danish intertitles translated live, 63 minutes); September 7 at 2:30

*I.N.R.I.* (Robert Wiene and Asta Nielsen, 1923, German intertitles translated live, 77 minutes) and *Hamlet* (Sven Gade and Asta Nielsen, 1920, English, 105 minutes); September 8 at 6:00

*The Hermitage: A Russian Odyssey, part 1* (Rod MacLeish, 1995, video, 54 minutes); September 11, 12, 13, and 14 at 12:30; September 15 at 1:00

*Lulu* (Leopold Jessner and Asta Nielsen, 1923, German intertitles translated live, 95 minutes); September 14 at 2:30

*The House by the Sea* (Fritz Kaufmann and Asta Nielsen, after the novel by Stefan Zweig, 1923/1924, 92 minutes); September 15 at 6:00

*The Hermitage: A Russian Odyssey, part 2* (Rod MacLeish, 1995, video, 53 minutes); September 18, 19, 20, and 21 at 12:30; September 22 at 1:00

*The Joyless Street* (G. W. Pabst and Asta Nielsen, 1925, English, 86 minutes); September 21 at 2:30

*Dora Brandes* (Magnus Stifter and Asta Nielsen, 1916, German intertitles translated live, 45 minutes) and *The Dangerous Age for Women* (Eugene Illés and Asta Nielsen, 1927, German intertitles translated live, 77 minutes); September 22 at 6:00

*The Hermitage: A Russian Odyssey, part 3* (Rod MacLeish, 1995, video, 55 minutes); September 25, 26, 27, and 28 at 12:30

*The Merry-Go-Round* (Richard Oswald and Asta Nielsen, 1920, English, 88 minutes); September 28 at 2:30

*The Merry-Go-Round* (Richard Oswald and Asta Nielsen, 1920, English, 88 minutes); September 28 at 2:30

*Tragedy of the Street* (Bruno Rahn and Asta Nielsen, 1927, German intertitles translated live, 81 minutes); September 29 at 1:00

*Art City: Making It in Manhattan* (Paul Gardner and Chris Maybach, 1995, video, 58 minutes); September 29 at 6:00

nized by Jytte Jensen, The Museum of Modern Art, and Edith Kramer, Pacific Film Archive, in collaboration with Marguerite Engberg, The Danish Film Museum, and George Eastman House. The films in the series will be shown at the Library of Congress, Mary Pickford Theater, and the National Gallery. All films are silent. Pianist Ray Brubacher will accompany the programs on September 8, 14, 15, 21, and 22.

## Art City: Making It in Manhattan

A witty and original commentary on achieving success in New York's art world, *Art City* is a collage of viewpoints from many players — gallery owners and workers, dealers, collectors, and, of course the artists themselves, including Louise Bourgeois, Brice Marden, Chuck Close, Elizabeth Murray, and Neil Jenney. "This remarkable film gives the sense of seeing the life of art today with absolute clarity.... When one realizes how priceless such a film would have been of the cubists, or the surrealists, or the abstract expressionists, one appreciates the rarity and beauty of this achievement." — Arthur C. Danto. The film's producer and director, Chris Maybach and Paul Gardner, respectively, will be present to discuss their film at this Washington premiere.

## Film Programs

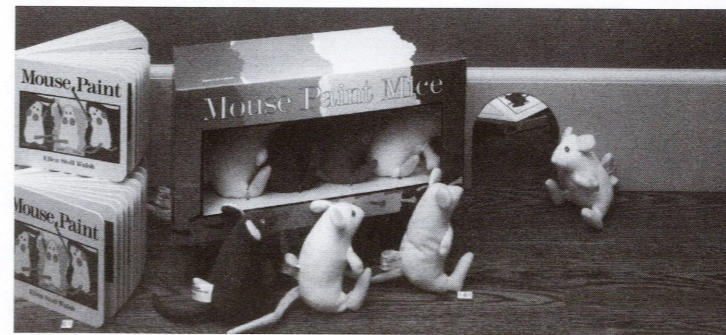
East Building auditorium  
Listening devices are available at the art information desk for visitors with hearing impairments.

## The Hermitage: A Russian Odyssey

A three-part video series on the history of the palace of the czars in St. Petersburg and its collections, will be shown from September 11 through 28.

## Asta — The Tenth Muse

Danish actress Asta Nielsen (1883–1972) was the first European film star to achieve an international reputation. She was already a well-known stage actress when she made *The Abyss* in 1910 under the direction of Urban Gad, who became her first husband and managed her film career until his death. Nielsen's forte was tragedy, and a number of her films have literary antecedents — adaptations of works by Ibsen, Strindberg, Schnitzler, Wedekind, Shakespeare; she even became the first female Hamlet of the screen. But Nielsen is best remembered for her extraordinary powers of expression — a gift that permitted her to create a remarkable range of portraits. As film historian Lotte Eisner has said, "It was impossible to put a label on this great actress: she was neither 'modernistic' nor 'expressionistic.' Her warm humanity, full of the breath of life and presence, refuted both abstraction and the abruptness of expressionist art." *Asta — The Tenth Muse* was orga-



## Gallery Shops

### Young Artists Collection

Books! Games! Puzzles!  
Creativity Kits!

Gallery shops will open a new children's store on the concourse level, which features a wide selection of books, kits, and products designed to spark the imagination and creative talents of children of all ages. Stop by the new store to see the exciting products for the young artists in your life.

### Exhibition Catalogues

*Thomas Eakins: The Rowing Pictures*  
\$20.95 (softbound)  
\$30.00 (hardbound)

*Olmec Art of Ancient Mexico*  
\$39.95 (softbound)  
\$80.00 (hardbound)

*In the Light of Italy: Corot and Early Open-Air Painting*  
\$27.00 (softbound)  
\$50.00 (hardbound)

*Galleria Doria Pamphilj Masterpieces: Paintings*  
\$20.00 (softbound)

*Adolph Menzel (1815–1905): Between Romanticism and Impressionism*  
\$39.95 (softbound)  
\$65.00 (hardbound)

*Encounters with Modern Art Works from the Rothschild Family Collections*  
\$30.00 (softbound)  
\$46.00 (hardbound)

Available from the National Gallery of Art shops.  
Sales information: (202) 842-6466  
Mail order: (301) 322-5900

*Mouse Paint* mice and *Mouse Paint* books available in the Gallery shops.

### Gallery Guide Booklets

Tour the permanent collection with self-guided brochures, on sale in the Gallery shops. Family guides with children's games and activities include *West Building Highlights*, ten popular works from the Renaissance through impressionism; *Portraits and Personalities*, about French and American painting and sculpture; and *Shapes and Patterns*, concerning the East Building's modern art and architecture. Adult walking tours include *French Painting, Landscape Paintings*, and "I Am Still Learning": *Late Works by Masters*. Each guide: \$2.50.

# et cetera

## Restaurant Highlights

### Concourse Buffet Concourse

Continental breakfast served Monday through Saturday, 10:00 to 11:00. Come for lunch after 11:00 for homestyle entrées, deli sandwiches, homemade pizzas, burgers, or salads.

### Garden Café West Building, ground floor

Enjoy bruschetta, rosemary grilled chicken salad, country-style cheese tart, as well as other light items. For reservations, call (202) 789-3202.

### Cascade Espresso Bar Concourse

Take an afternoon break near the cascade fountain. Choose from gourmet coffee, espresso, cappuccino, or other refreshments, plus an array of light dishes and desserts.

### Terrace Café East Building, upper level

The café features Mexican selections chosen to complement the exhibition *Olmec Art of Ancient Mexico*. For reservations call (202) 789-3201. For group reservations and information, call (202) 347-9401.

## Restaurant Hours

### Concourse Buffet

Monday – Friday	10:00 – 3:00
Saturday	10:00 – 3:30
Sunday	11:00 – 4:00

### Garden Café

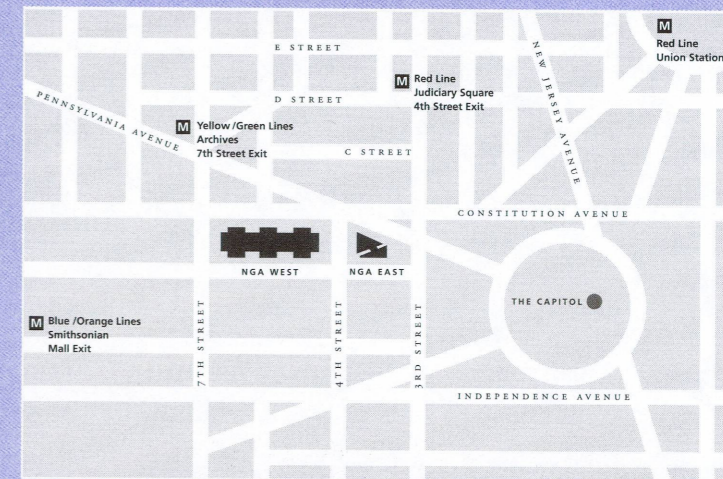
Reservations	(202) 789-3202
Monday – Saturday	11:30 – 3:00
Sunday	12:00 – 4:00

### Cascade Espresso Bar

Monday – Saturday	12:00 – 4:30
Sunday	12:00 – 5:30

### Terrace Café

Reservations	(202) 789-3201
Monday – Friday	11:30 – 3:00
Saturday	11:30 – 3:00
Sunday	12:00 – 4:00



## Gallery Information

The National Gallery of Art and its collections belong to the people of the United States of America. European and American paintings, sculpture, decorative arts, and selected works on paper are displayed in the permanent collection galleries, and temporary exhibitions of art from countries and cultures throughout the world are presented on a regular basis. Works of art on paper not on exhibit are available for viewing by appointment, weekdays. Call (202) 842-6380. Admission is always free.

The Matisse cut-outs are on view only between 10:00 and 2:00 weekdays and Saturday, noon to 4:00 on Sundays.

## Hours

Monday – Saturday 10:00 to 5:00  
Sunday 11:00 to 6:00

## For general information

Call (202) 737-4215

## Location

The Gallery is located between 3rd and 7th Streets, NW, on Constitution Avenue. The nearest Metro stops are **Judiciary Square** on the Red Line, **Archives** on the Yellow/Green Lines, and **Smithsonian** on the Blue/Orange Lines. Metro bus stops are located on 4th Street and 7th Street. The East and West Buildings are connected by an all-weather underground passage with a moving walkway. Entrances to the West Building are on the Mall, on Constitution Avenue at 6th Street, and on 4th Street. The entrance to the East Building is on 4th Street.

## Accessibility

Ramps for wheelchairs and strollers are located at the 6th Street entrance to the West Building on Constitution Avenue, NW, and at the 4th Street entrance to the East Building. Wheelchairs and strollers are available at all entrances. For information about access to public areas and galleries, refer to the *Brief Guide and Plan* of the East and West Buildings at the art information desks. Limited parking is available in front of the East Building for vehicles displaying the international symbol of accessibility (♿).

Assistive listening devices are available on a free-loan basis from the art information desk in the East Building for the large auditorium, and from a self-service unit in the wall

to the left of the entrance to the East Building small auditorium.

Sign-language interpretation is available with three weeks' notice. Call (202) 842-6247 or the TDD line given below.

## For general information on services

Call (202) 842-6690  
Weekdays 9:00 to 5:00

## Telecommunications Device for the Deaf (TDD)

Call (202) 842-6176  
Weekdays 9:00 to 5:00

A TDD has been installed at the public telephone adjacent to the stamp machine on the concourse level. This TDD is located to accommodate wheelchair users.

National  
Gallery of Art,  
Washington



september calendar 1996

National Gallery of Art  
Washington, DC 20565

*Delivery may be delayed by bulk-rate mailing.*

ON THE COVER:

Adolph Menzel, *King Wilhelm I's  
Departure to the Army on July 31,  
1870, 1871*, Staatliche Museen zu  
Berlin, Nationalgalerie

# September

# exhibitions



CONTINUING EXHIBITION

## Olmec Art of Ancient Mexico

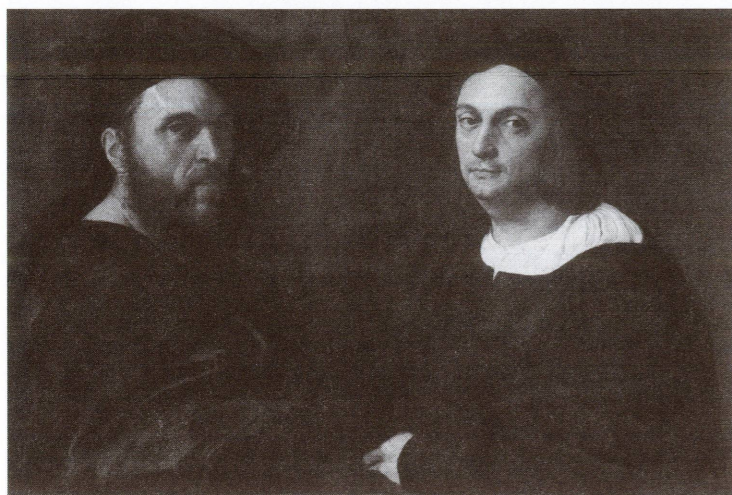
Through October 20, 1996  
East Building, concourse level

This first comprehensive exhibition of Olmec art provides a panoramic view of the artistic achievements of Mexico's earliest (1200 to 300 BC) and least-known civilization. The 120 objects in the show were created in Mexico and Central America three thousand years ago, long before the great civilizations of the Maya, Teotihuacan, and Aztec. Among the many highlights of the exhibition are the spectacular ten-ton "Colossal Head 8" from San

Olmec, *La Venta Offering 4 - Group of Standing Figures and Celts*, Middle Formative Period, Museo Nacional de Antropología, Mexico City

Lorenzo, which has left Mexico for the first time; an impressive cache of jade and serpentine figurines from La Venta; "the Acrobat Effigy Vessel"; a room of jade funerary masks and fragments; the intriguing "Young Lord," incised with iconographic designs; and "The Wrestler," one of the most familiar Mesoamerican sculptures. The exhibition was organized by the National Gallery of Art in collaboration with Mexico's National Council for Culture and the Arts through its National Institute of Anthropology and History.

The exhibition is made possible by *The Fund for the International Exchange of Art and generous support from Goldman, Sachs & Co., Grupo Financiero Banamex-Accival, Pulsar Internacional, and Ford Motor Company, as well as other corporations. It is supported by an indemnity from the Federal Council on the Arts and the Humanities.*



Raphael, *Double Portrait of Andrea Navagero and Agostino Beazzano*, c. 1516, Arti Doria Pamphilj, Rome

sixteenth through eighteenth centuries. Among the works on view for the first time in the United States are Velázquez' famous portrait of Pope Innocent X, and busts of the pontiff by Bernini and Algardi. Other paintings in the exhibition are Raphael's double portrait of two Renaissance humanists; the young Titian's *Salome with the Head of Saint John the Baptist*; Caravaggio's early *Rest on the Flight into Egypt*; and one of the masterpieces of baroque painting, Guercino's *Erminia Discovering the Wounded Tancred*. An ideal landscape by Annibale Carracci and paintings by Lorenzo Lotto, Claude Lorrain, and Carlo Saraceni are also on view. The exhibition was organized by the National Gallery, London, in collaboration with the National Gallery of Art, Washington.

The exhibition is supported by an indemnity from the Federal Council on the Arts and the Humanities.

CLOSING EXHIBITION

## Masterpieces from the Palazzo Doria Pamphilj, Rome

Through September 2, 1996  
West Building, main floor, gallery 56

The National Gallery of Art has the rare opportunity to present a selection of works from the Palazzo Doria Pamphilj's celebrated collection while the Palazzo undergoes renovation. Brought into existence in 1651 by Pope Innocent X Pamphilj (reigned 1644-1655), the collection contains several hundred works by the greatest Italian and northern European painters of the



Carlo Saraceni, *St. Roch Attended by an Angel*, c. 1610-1620, Arti Doria Pamphilj, Rome



CLOSING EXHIBITION

## In the Light of Italy: Corot and Early Open-Air Painting

Through September 2, 1996  
West Building, main floor, galleries 74, 75, 76, 79, and 82

*In the Light of Italy: Corot and Early Open-Air Painting* presents 130 paintings and oil sketches by forty-eight artists, most notably Jean-Baptiste-Camille Corot, one of the greatest landscape painters of the nineteenth century. It also includes works by Carl Blechen,

Christoffer Wilhelm Eckersburg, *A Pergola*, 1813-1816, Statens Museum for Kunst, Copenhagen

Johan Christian Dahl, Simon Denis, Christoffer Wilhelm Eckersberg, Thomas Jones, and Pierre-Henri de Valenciennes. The exhibition chronicles the development of the open-air tradition from its origins in the work of British and French artists in the 1780s to its high point in the works of Corot in the later 1820s. The exhibition was organized by the National Gallery of Art, Washington, and The Brooklyn Museum, in association with the Saint Louis Art Museum.

The exhibition is made possible by a grant from *The Florence Gould Foundation*. It is supported by an indemnity from the Federal Council on the Arts and the Humanities.

FORTHCOMING EXHIBITIONS

## Georges de La Tour and His World

October 6, 1996 through  
January 5, 1997

## Michelangelo and His Influence: Drawings from Windsor Castle

October 27, 1996 through  
January 5, 1997

## Splendors of Imperial China: Treasures from the National Palace Museum, Taipei

January 26 through  
April 6, 1997



CLOSING EXHIBITION

## Thomas Eakins: The Rowing Pictures

Through September 29, 1996  
East Building, ground level

For the first time, all of Thomas Eakins' known works depicting rowing scenes have been brought together. They are universally regarded as masterpieces of American art. The exhibition includes several major paintings executed by Eakins between 1870 and 1874,

such as *The Biglin Brothers Turning the Stake* (The Cleveland Museum of Art), *The Champion Single Sculls (Max Schmitt in a Single Scull)* (The Metropolitan Museum of Art), and *Biglin Brothers Racing* (National Gallery of Art). In these paintings the artist investigated various pictorial problems, such as the depiction of the complex physical motions of rowing and the construction of rigorously accurate and convincing perspectives that unite closely observed foreground figures and deep space. They are also the first of his paintings to express what

Thomas Eakins, *The Pair-Oared Shell*, 1872, Philadelphia Museum of Art; Gift of Mrs. Thomas Eakins and Miss Mary Adeline Williams

would be his lifelong interest in representing distinctly modern and national subjects. The exhibition was organized by the Yale University Art Gallery.

The exhibition is made possible by a generous grant from *Henry Luce Foundation, Inc.*, with additional support from the *National Endowment for the Arts*, a federal agency.

NEWS FROM THE PERMANENT COLLECTION

## Skylight Replacement Project and Italian Renaissance Relocation

Selected Italian Renaissance paintings and sculpture have been relocated from the main floor galleries to the ground floor galleries of the West Building during the first phase of the skylight and roof replacement project. The new energy-efficient skylights, which replace the fifty-five-year-old system, will provide greater protection for the collections while restoring a light-filled environment.

## Micro Gallery

(closed September 30 and October 1)  
West Building, main floor

The National Gallery of Art's Micro Gallery is the most comprehensive, interactive multimedia computer system in an American art museum. Thirteen computers, installed in the redesigned art information room near the West Building Mall entrance, enable visitors to see in magnified detail nearly every work of art on display in the permanent collection, and to research subjects, artists, geographic areas, time periods, pronunciation (with sound), and more. Visitors can design a personal tour of the collection and print it out to use as a guide in the galleries.

The Micro Gallery is made possible by a major grant from the *American Express Foundation*.

## Johannes Vermeer

*The Girl with the Red Hat*, *A Lady Writing*, *Woman Holding a Balance*, and *Young Girl with a Flute* are back from The Netherlands and are all on view in the Dutch Cabinet Galleries on the main floor, West Building.