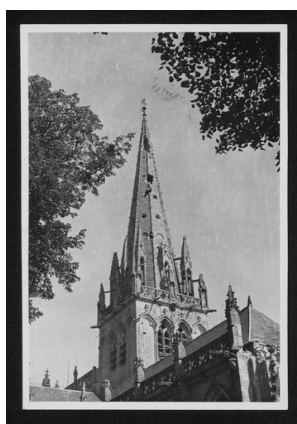


James J. Rorimer Papers



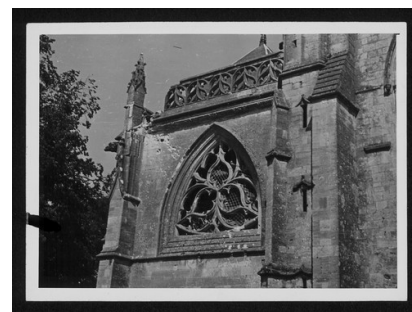
SC-021_17172_001.tif

Image



SC-021_17260_10F.tif

10 F/ Manche/ Carentan/ Towe...



SC-021_17260_11F.tif

11 F/ Manche/ Carentan/ N en...



SC-021_17260_12F.tif

12 F/ Manche/ Carentan/ Apse...



SC-021_17260_13F.tif

13 F/ Manche/ Carentan/ Tower



SC-021_17260_14F.tif

14 F/ Manche/ Fontenay-sur-M...



SC-021_17260_15F.tif

15 F/ Manche/ Fontenay sur M...



SC-021_17260_16F.tif

16 F/ Manche/ Fontenay sur M...



SC-021_17260_17F.tif

17 F/ Manche/ Fontenay sur M...

James J. Rorimer Papers



SC-021_17260_18F.tif

18 F/ Manche/ Fontenay sur M...



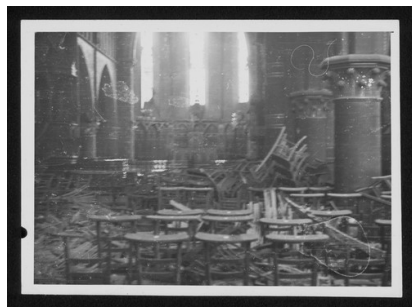
SC-021_17260_19F.tif

19 F/ Manche/ Fontenay sur M...



SC-021_17260_1F.tif

1 F/ Manche/ Valdognes/ Égli...



SC-021_17260_20F.tif

20 F/ Manche/ La Haye du Pui...



SC-021_17260_21F.tif

21 F/ Manche/ La Haye du Pui...



SC-021_17260_22F.tif

22 F/ Manche/ La Haye du Pui...



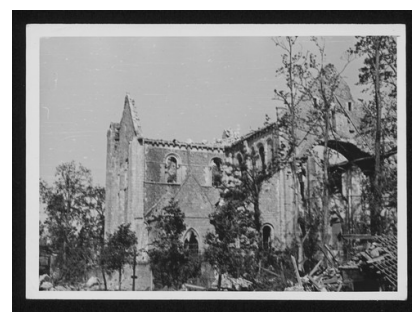
SC-021_17260_23F.tif

23 F/ Manche/ La Haye du Pui...



SC-021_17260_24F.tif

24 F/ Manche/ Lessay/ Church...



SC-021_17260_25F.tif

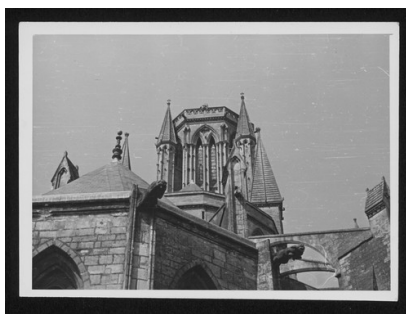
25 F/ Manche/ Lessay/ Church...

James J. Rorimer Papers



SC-021_17260_26F.tif

26 F/ Manche/ Lessay/ Church...



SC-021_17260_27F.tif

27 F/ Manche/ Coutances/ Cat...



SC-021_17260_28F.tif

28 F/ Manche/ Coutances/ Cat...



SC-021_17260_29F.tif

29 F/ Manche/ Coutances/ Ste...



SC-021_17260_2F.tif

2 F/ Manche/ Valdognes/ Égli...



SC-021_17260_30F.tif

30 F/ Manche/ Coutances/ Chu...



SC-021_17260_31F.tif

31 F/ Manche/ Coutances/ W. ...



SC-021_17260_32F.tif

32 F/ Manche/ Coutances/ Cat...



SC-021_17260_33F.tif

33 F/ Manche/ Coutances/ Cat...

James J. Rorimer Papers



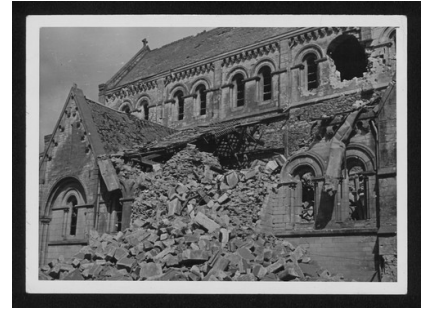
SC-021_17260_34F.tif

34 F/ Manche/ Coutances/ Cat...



SC-021_17260_35F.tif

35 F/ Manche/ St. Lo/ Ste. Croix



SC-021_17260_36F.tif

36 F/ Manche/ St. Lo/ Ste. C...



SC-021_17260_37F.tif

37 F/ Manche/ St. Lo/ Ste. C...



SC-021_17260_38F.tif

38 F/ Manche/ St. Lo/ Side a...



SC-021_17260_3F.tif

3 F/ Manche/ Valdognes/ Égli...



SC-021_17260_4F.tif

4 F/ Manche/ Valdognes/ Égli...



SC-021_17260_5F.tif

5 F/ Manche/ Montebourg/ Chu...



SC-021_17260_6F.tif

6 F/ Manche/ Montebourg/ Chu...

James J. Rorimer Papers



SC-021_17260_7F.tif

7 F/ Manche/ St. Come-Dumont...



SC-021_17260_8F.tif

8 F/ Manche/ St. Gilles/ Chu...



SC-021_17260_9F.tif

9 F/ Manche/ St. Gilles/ Chu...



SC-021_17261_B0F.tif

B-0 F/ Manche/ St. Lo/ Hotel...



SC-021_17261_B10F.tif

B-10 F/ Manche/ Abbey of St...



SC-021_17261_B11F.tif

B-11 F/ Manche/ Abbey of St...



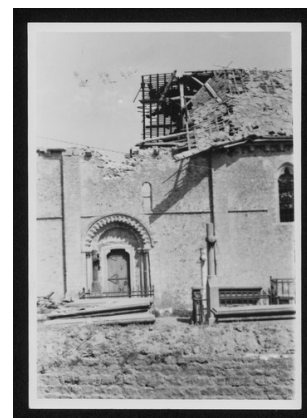
SC-021_17261_B12F.tif

B-12 F/ Calvados/ Colleville...



SC-021_17261_B13F.tif

B-13 F/ Calvados/ Colleville...



SC-021_17261_B14F.tif

B-14 F/ Calvados/ Colleville...

James J. Rorimer Papers



SC-021_17261_B15F.tif

B-15 F/ Manche/ Periers/ Chu...



SC-021_17261_B16F.tif

B-16 F/ Manche/ Periers/ Chu...



SC-021_17261_B17F.tif

B-17 F/ Manche/ Periers/ Chu...



SC-021_17261_B18F.tif

B-18 F/ Manche/ Periers/ Church



SC-021_17261_B19F.tif

B-19 F/ Manche/ Mont-St.-Michel



SC-021_17261_B1F.tif

B-1 F/ Manche/ St. Lo/ Hotel...



SC-021_17261_B20F.tif

B-20 F/ Sarthe/ Le-Grand-Luc...



SC-021_17261_B21F.tif

B-21 F/ Sarthe/ Le-Grand-Luc...



SC-021_17261_B21F1.tif

American and French authoriti...

James J. Rorimer Papers



SC-021_17261_B25F.tif

B-25 F/ Sarthe/ Souches/ Lou...



SC-021_17261_B26F.tif

B-26 F/ Sarthe/ Souches/ Lou...



SC-021_17261_B27F.tif

B-27 F/ Sarthe/ Souches/ Lou...



SC-021_17261_B28F.tif

B-28 F/ Sarthe/ Souches/ Cap...



SC-021_17261_B29F.tif

B-29 F/ Paris/ Hotel Herouet...



SC-021_17261_B2F.tif

B-2 F/ Manche/ St. Lo/ Hotel...



SC-021_17261_B30F.tif

B-30 F/ Paris/ Hotel Herouet...



SC-021_17261_B31F.tif

B-31 F/ Paris/ Hotel Herouet...



SC-021_17261_B32F.tif

B-32 F/ Paris/ Hotel Herouet...

James J. Rorimer Papers



SC-021_17261_B33F.tif

B-33 F/ Paris/ Hotel Herouet...



SC-021_17261_B34F.tif

B-34 F/ Paris/ Ministry of F...



SC-021_17261_B35F.tif

B-35 F/ Paris/ Ministry of F...



SC-021_17261_B3F.tif

B-3 F/ Manche/ St. Lo/ Cathe...



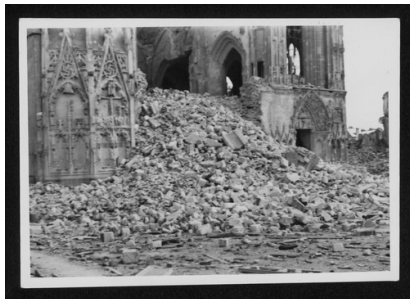
SC-021_17261_B4F.tif

B-4 F/ Manche/ St. Lo/ Cathe...



SC-021_17261_B5F.tif

B-5 F/ Manche/ St. Lo/ Cathe...



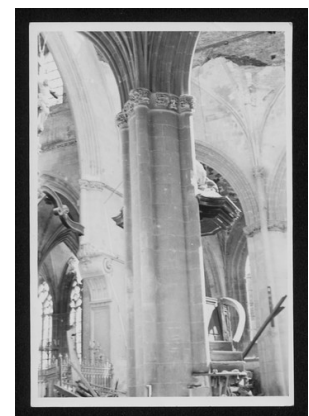
SC-021_17261_B6F.tif

B-6 F/ Manche/ St. Lo/ Cathe...



SC-021_17261_B7F.tif

B-7 F/ Manche/ St. Lo/ Cathe...



SC-021_17261_B8F.tif

B-8 F/ Manche/ St. Lo/ Cathe...

James J. Rorimer Papers



SC-021_17261_B9F.tif

B-9 F/ Manche/ Abbey of St. ...



SC-021_17262_C10F.tif

C-10 F/ Paris/ Chambre des D...



SC-021_17262_C11F.tif

C-11 F/ Paris/ Chambre des D...



SC-021_17262_C12F.tif

C-12 F/ Paris/ Chambre des D...



SC-021_17262_C13F.tif

C-13 F/ Paris/ Place de la C...



SC-021_17262_C14F.tif

C-14 F/ Paris/ Place de la C...



SC-021_17262_C15F.tif

C-15 F/ Paris/ Place de la C...



SC-021_17262_C16F.tif

C-16 F/ Paris/ Tuileries Gardens



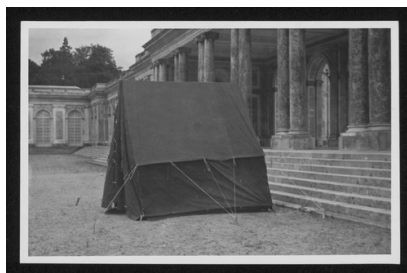
SC-021_17262_C17F.tif

C-17 F/ Paris/ From Tuilerie...

James J. Rorimer Papers



SC-021_17262_C19F.tif
C-19 F/ Paris/ From tuilerie...



SC-021_17262_C1F.tif
C-1 F/ Versailles/ Trianon/ ...



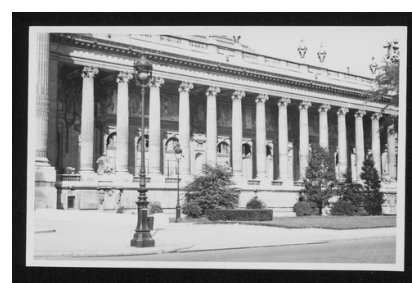
SC-021_17262_C20F.tif
C-20 F/ Paris/ Ministry of M...



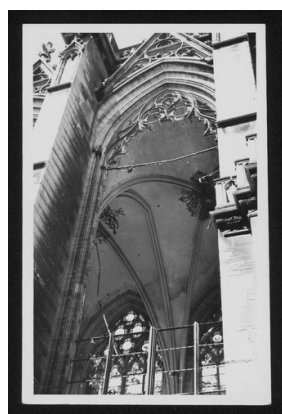
SC-021_17262_C21F.tif
C-21 F/ Paris/ Flowers no br...



SC-021_17262_C22F.tif
C-22 F/ Paris/ Grand Palais



SC-021_17262_C23F.tif
C-23 F/ Paris/ Grand Palais



SC-021_17262_C26F.tif
C-26 F/ Paris/ Vincennes/ Ch...



SC-021_17262_C27F.tif
C-27 F/ Paris/ Vincennes



SC-021_17262_C28F.tif
C-28 F/ Paris/ Vincennes/ Gr...

James J. Rorimer Papers



SC-021_17262_C2F.tif

C-2 F/ Versailles/ Trianon/ ...



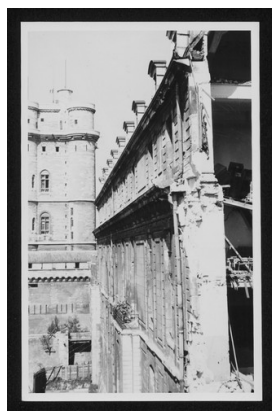
SC-021_17262_C30F.tif

C-30 F/ Paris/ Vincennes/ Ch...



SC-021_17262_C31F.tif

C-31 F/ Paris/ Vincennes/ Ch...



SC-021_17262_C32F.tif

C-32 F/ Paris/ Vincennes/ To...



SC-021_17262_C33F.tif

C-33 F/ Paris/ Vincennes/ to...



SC-021_17262_C35F.tif

C-35 F/ Paris/ Vincennes/ Ch...



SC-021_17262_C36F.tif

C-36 F/ Paris/ Hotel/ Herouë...



SC-021_17262_C37F.tif

C-37 F/ Paris/ Opera



SC-021_17262_C3F.tif

C-3 F/ Versailles/ Trianon/ ...

James J. Rorimer Papers



SC-021_17262_C4F.tif

C-4 F/ Versailles/ Trianon/ ...



SC-021_17262_C5F.tif

C-5 F/ Versailles/ Trianon/ ...



SC-021_17262_C7F.tif

C-7 F/ Paris/ Chamber des D...



SC-021_17262_C8F.tif

C-8 F/ Paris/ Chamber des De...



SC-021_17262_C9F.tif

C-9 F/ Paris/ Chambre des De...



SC-021_17263_D1F.tif

D-1 F/ Paris/ Senate/ Office



SC-021_17263_D3F.tif

D-3 F/ Paris/ Senate/ Library



SC-021_17263_D4F.tif

D-4 F/ Paris/ Senate/ Recept...



SC-021_17263_D5F.tif

D-5 F/ Paris/ Senate/ Courty...

James J. Rorimer Papers



SC-021_17263_D6F.tif

D-6 F/ Paris/ Senate/ Entran...



SC-021_17264_E10F.tif

E-10 F/ Seine-et-Oise/ Chate...



SC-021_17264_E11F.tif

E-11 F/ Seine-et-Oise/ Chate...



SC-021_17264_E12F.tif

E-12 F/ Seine-et-Oise/ Chate...



SC-021_17264_E13F.tif

E-13 F/ Seine-et-Oise/ Chate...



SC-021_17264_E14F.tif

E-14 F/ Seine-et-Oise/ Chate...



SC-021_17264_E15F.tif

E-15 F/ Seine-et-Oise/ Chate...



SC-021_17264_E16F.tif

E-16 F/ Seine-et-Oise/ Chate...



SC-021_17264_E17F.tif

E-17 F/ Seine-et-Oise/ Chate...

James J. Rorimer Papers



SC-021_17264_E18F.tif

E-18 F/ Seine-et-Oise/ Chate...



SC-021_17264_E19F.tif

E-19 F/ Seine-et-Oise/ Chate...



SC-021_17264_E1F.tif

E-1 F/ Seine-et-Oise/ Mantes...



SC-021_17264_E20F.tif

E-20 F/ Seine-et-Oise/ Mouss...



SC-021_17264_E21F.tif

E-21 F/ Seine-et-Oise/ Mouss...



SC-021_17264_E22F.tif

E-22 F/ Seine-et-Oise/ Mouss...



SC-021_17264_E23F.tif

E-23 F/ Seine-et-Oise/ Mouss...



SC-021_17264_E24F.tif

E-24 F/ Seine-et-Oise/ Mouss...



SC-021_17264_E25F.tif

E-25 F/ Seine-et-Oise/ Mouss...

James J. Rorimer Papers



SC-021_17264_E26F.tif
E-26 F/ Seine-et-Oise/ Ville...



SC-021_17264_E2F.tif
E-2 F/ Seine-et-Oise/ Mantes...



SC-021_17264_E3F.tif
E-3 F/ Seine-et-Oise/ Mantes...



SC-021_17264_E4F.tif
E-4 F/ Seine-et-Oise/ Mantes...



SC-021_17264_E5F.tif
E-5 F/ Seine-et-Oise/ Mantes...



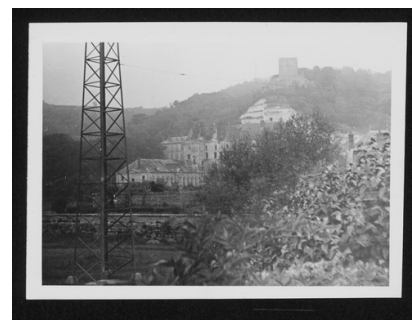
SC-021_17264_E6F.tif
E-6 F/ Seine-et-Oise/ Mantes...



SC-021_17264_E7F.tif
E-7 F/ Seine-et-Oise/ Mantes...



SC-021_17264_E8F.tif
E-8 F/ Seine-et-Oise/ Villet...



SC-021_17264_E9F.tif
E-9 F/ Seine-et-Oise/ Chatea...

James J. Rorimer Papers



SC-021_17265_E27F.tif
E-27 F/ Seine-et-Oise/ Ville...



SC-021_17265_E28F.tif
E-28 F/ Seine-et-Oise/ Mery...



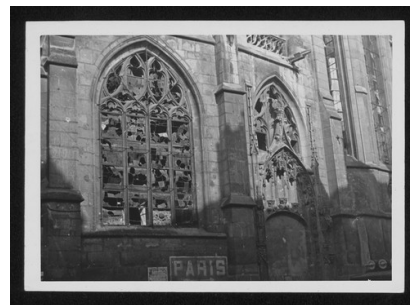
SC-021_17265_E32F.tif
E-32 F/ Seine-et-Oise/ Versa...



SC-021_17265_E34F.tif
E-34 F/ Seine-et-Oise/ Melun...



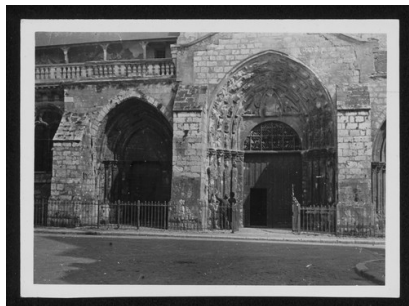
SC-021_17265_E36F.tif
E-36 F/ Seine-et-Oise/ Melun...



SC-021_17265_E37F.tif
E-37 F/ Seine-et-Oise/ Melun...



SC-021_17265_E38F.tif
E-38 F/ Seine-et-Marne/ Vaux...



SC-021_17266_F0F.tif
F-0 F/ Seine-et-Marne/ Provi...



SC-021_17266_F10F.tif
F-10 F/ Seine-et-Oise/ Dampi...

James J. Rorimer Papers



SC-021_17266_F11F.tif

F-11 F/ Seine-et-Oise/ Dampi...



SC-021_17266_F12F.tif

F-12 F/ Seine-et-Oise/ Dampi...



SC-021_17266_F13F.tif

F-13 F/ Seine-et-Oise/ Dampi...



SC-021_17266_F14F.tif

F-14 F/ Seine-et-Oise/ Dampi...



SC-021_17266_F15F.tif

F-15 F/ Seine-et-Oise/ Dampi...



SC-021_17266_F16F.tif

F-16 F/ Seine/ Paris/ Tuiler...



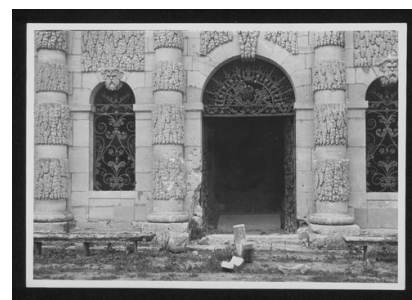
SC-021_17266_F17F.tif

F-17 F/ Seine/ Paris/ Tuiler...



SC-021_17266_F18F.tif

F-18 F/ Seine-et-Oise/ Davro...



SC-021_17266_F19F.tif

F-19 F/ Seine-et-Oise/ Davro...

James J. Rorimer Papers



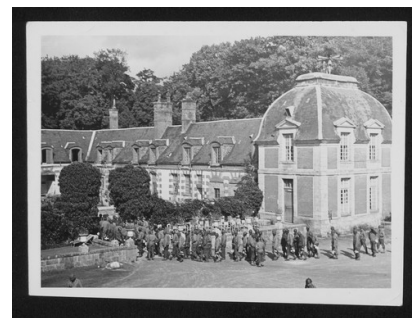
SC-021_17266_F1F.tif

F-1 F/Seine-et-Marne/Provins...



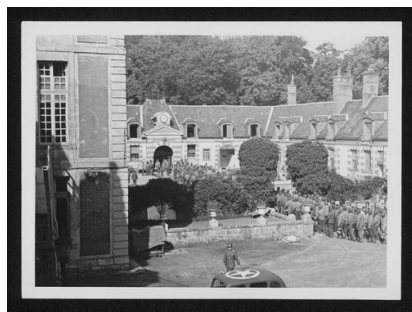
SC-021_17266_F20F.tif

F-20 F/ Seine-et-Oise/ Davro...



SC-021_17266_F21F.tif

F-21 F/ Seine-et-Oise/ Chara...



SC-021_17266_F22F.tif

F-22 F/ Seine-et-Oise/ Chara...



SC-021_17266_F23F.tif

F-23 F/ Seine-et-Oise/ Chara...



SC-021_17266_F24F.tif

F-24 F/ Seine-et-Oise/ Charm...



SC-021_17266_F25F.tif

F-25 F/ Seine-et-Oise/ Coura...



SC-021_17266_F26F.tif

F-26 F/ Seine-et-Marne/ Mare...



SC-021_17266_F27F.tif

F-27 F/ Seine-et-Marne/ Mare...

James J. Rorimer Papers



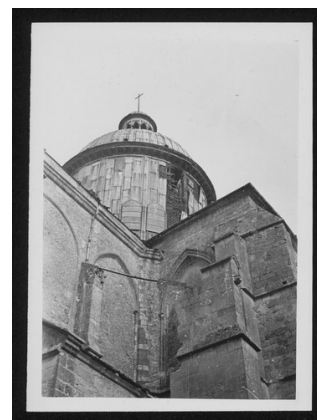
SC-021_17266_F28F.tif

F-28 F/ Seine-et-Marne/ Mare...



SC-021_17266_F29F.tif

F-29 F/ Seine-et-Marne/ Mare...



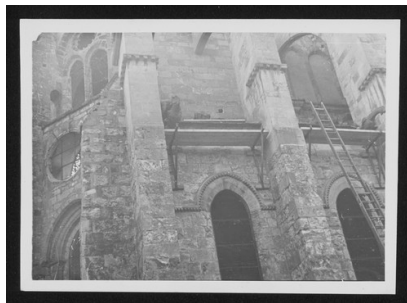
SC-021_17266_F2F.tif

F-2 F/ Seine-et-Marne/ Provi...



SC-021_17266_F30F.tif

F-30 F/ Seine-et-Marne/ Mare...



SC-021_17266_F31F.tif

F-31 F/ Seine-et-Marne/ Mare...



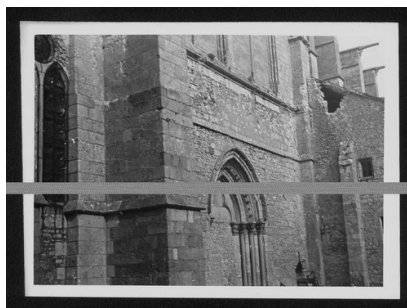
SC-021_17266_F32F.tif

F-32 F/ Seine-et-Marne/ Mare...



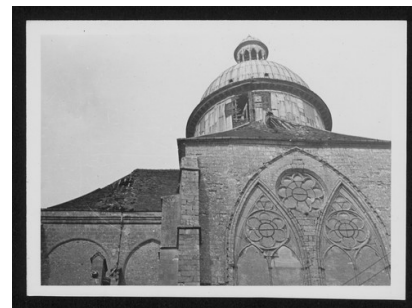
SC-021_17266_F33F.tif

F-33 F/ Seine-et-Marne/ Mare...



SC-021_17266_F3F.tif

F-3 F/ Seine-et-Marne/ Provi...



SC-021_17266_F4F.tif

F-4 F/ Seine-et-Marne/ Provi...

James J. Rorimer Papers



SC-021_17266_F5a.tif

F-5a [Detail of camouflage net]



SC-021_17266_F5F.tif

F-5 F/ Seine-et-Oise/ Versai...



SC-021_17266_F7F.tif

F-7 F/ Seine-et-Oise/ Versai...



SC-021_17266_F8F.tif

F-8 F/ Seine-et-Oise/ Versai...



SC-021_17266_F9F.tif

F-9 F/ Seine-et-Oise/ Dampie...



SC-021_17267_G11F.tif

F-11 F/ Seine-et-Oise/ Chate...



SC-021_17267_G12F.tif

G-12 F/ Seine-et-Oise/ Chate...



SC-021_17267_G14F.tif

G-14 F/ Seine-et-Oise/ Chate...



SC-021_17267_G15F.tif

G-15 F/ Seine-et-Oise/ Gamba...

James J. Rorimer Papers



SC-021_17267_G16F.tif

G-16 F/ Seine-et-Oise/ Gamba...



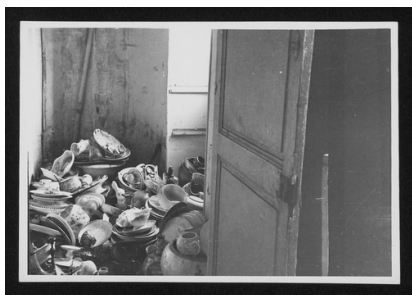
SC-021_17267_G17F.tif

G-17 F/ Seine-et-Oise/ Gamba...



SC-021_17267_G18F.tif

G-18 F/ Seine-et-Oise/ Gamba...



SC-021_17267_G19F.tif

G-19 F/ Seine-et-Oise/ Gamba...



SC-021_17267_G1F.tif

G-1 F/ Seine-et-Oise/ Rambou...



SC-021_17267_G21F.tif

G-21 F/ Seine-et-Marne/ Cham...



SC-021_17267_G22F.tif

G-22 F/ Seine-et-Marne/ Chat...



SC-021_17267_G24F.tif

G-24 F/ Seine-et-Marne/ Chat...



SC-021_17267_G26F.tif

G-26 F/ Seine-et-Marne/ Chat...

James J. Rorimer Papers



SC-021_17267_G27F.tif

G-27 F/ Seine-et-Marne/ Chat...



SC-021_17267_G28F.tif

G-28 F/ Seine-et-Marne/ Chat...



SC-021_17267_G29F.tif

G-29 F/ Seine-et-Marne/ Chat...



SC-021_17267_G2F.tif

G-2 F/ Seine-et-Oise/ Rambou...



SC-021_17267_G30F.tif

G-30 F/ Seine-et-Marne/ Chat...



SC-021_17267_G31F.tif

G-31 F [G?]/ Seine-et-Oise/ ...



SC-021_17267_G32F.tif

G-32 F/ Seine-et-Marne/ Caht...



SC-021_17267_G36F.tif

G-36 F/ Seine-et-Marne/ Chat...



SC-021_17267_G37F.tif

G-37 F/ Seine-et-Marne/ Chat...

James J. Rorimer Papers



SC-021_17267_G3F.tif

G-3 F/ Seine-et-Oise/ Rambou...



SC-021_17267_G4F.tif

G-4 F/ Seine-et-Oise/ Rambou...



SC-021_17267_G5F.tif

G-5 F/ Seine-et-Oise/ Rambou...



SC-021_17267_G6F.tif

G-6 F/ Seine-et-Oise/ Rambou...



SC-021_17267_G7F.tif

G-7 F/ Seine-et-Oise/ Chatea...



SC-021_17267_G9F.tif

G-9 F/ Seine-et-Oise/ Chatea...



SC-021_17268_H1.tif

H-1 Seine-et-Oise/ Deuil/ Ch...



SC-021_17268_H10.tif

H-10 Seine-et-Oise/ Chateau ...



SC-021_17268_H11.tif

H-11 Seine-et-Oise/ Chateau ...

James J. Rorimer Papers



SC-021_17268_H12.tif

H-12 Seine-et-Oise/ Chateau ...



SC-021_17268_H13.tif

H-13 Seine-et-Oise/ Chateau ...



SC-021_17268_H14.tif

H-14 Seine-et-Oise/ Church ...



SC-021_17268_H15.tif

H-15 Seine-et-Oise/ Church o...



SC-021_17268_H16.tif

H-16 Seine-et-Oise/ Chateau ...



SC-021_17268_H17.tif

H-17 Seine-et-Oise/ Church a...



SC-021_17268_H18.tif

H-18 Seine-et-Oise/ Chateau ...



SC-021_17268_H19.tif

H-19 Seine-et-Oise/ Chateau ...



SC-021_17268_H2.tif

H-2 Seine-et-Oise/ Deuil/ Ch...

James J. Rorimer Papers



SC-021_17268_H20.tif

H-20 Seine-et-Oise/ Chateau ...



SC-021_17268_H21.tif

H-21 Seine-et-Oise/ Chateau ...



SC-021_17268_H22.tif

H-22 Seine-et-Oise/ Chateau ...



SC-021_17268_H23.tif

H-23 Seine-et-Oise/ A chatea...



SC-021_17268_H24.tif

H-24 Seine-et-Oise/ A chatea...



SC-021_17268_H25.tif

H-25 Seine-et-Oise/ A chatea...



SC-021_17268_H26.tif

H-26 Seine-et-Oise/ A chatea...



SC-021_17268_H27.tif

H-27 Seine-et-Oise/ A chatea...



SC-021_17268_H28.tif

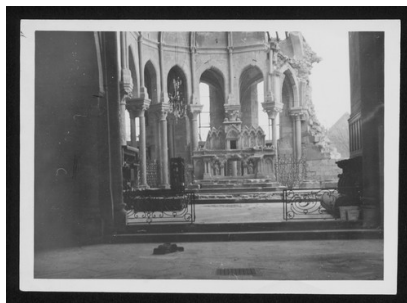
H-28 Seine-et-Oise/ Chateau ...

James J. Rorimer Papers



SC-021_17268_H29.tif

H-29 Seine-et-Oise/ Chateau ...



SC-021_17268_H3.tif

H-3 Seine-et-Oise/ Deuil/ Ch...



SC-021_17268_H30.tif

H-30 Seine-et-Oise/ Chateau ...



SC-021_17268_H31.tif

H-31 Seine-et-Oise/ Chateau ...



SC-021_17268_H32.tif

H-32 Seine-et-Oise/ Chateau ...



SC-021_17268_H33.tif

H-33 Seine-et-Oise/ Chateau ...



SC-021_17268_H34.tif

H-34 Seine-et-Oise/ Chateau ...



SC-021_17268_H35.tif

H-35 Seine-et-Oise/ Chateau ...



SC-021_17268_H36.tif

H-36 Seine-et-Oise/ Chateau ...

James J. Rorimer Papers



SC-021_17268_H37.tif

H-37 Seine-et-Oise/ Chateau ...



SC-021_17268_H4.tif

H-4 Seine-et-Oise/ Deuil/ Ch...



SC-021_17268_H5.tif

H-5 Seine-et-Oise/ Deuil/ Ch...



SC-021_17268_H6.tif

H-6 Seine-et-Oise/ Deuil/ Ch...



SC-021_17268_H7.tif

H-7 Seine-et-Oise/ Deuil/ Ch...



SC-021_17268_H8.tif

H-8 Seine-et-Oise/ Deuil/ Ch...



SC-021_17268_H9.tif

H-9 Seine-et-Oise/ Chateau o...



SC-021_17269_I10F.tif

I-10 F/ Seine et Oise/ Cahte...



SC-021_17269_I11F.tif

I-11 F/ Seine et Oise/ Chate...

James J. Rorimer Papers



SC-021_17269_I12F.tif

I-12 F/ Seine et Oise/ Chate...



SC-021_17269_I13F.tif

I-13 F/ Seine et Oise/ Churc...



SC-021_17269_I14F.tif

I-14 F/ Paris/ Pavillion 60/...



SC-021_17269_I15F.tif

I-15 F/ Paris/ Pavillion 60/...



SC-021_17269_I19F.tif

I-19 F/ Paris/ Seascape/ Fre...



SC-021_17269_I20F.tif

I-20 F/ Paris/ Portrait of a...



SC-021_17269_I21F.tif

I-21 F/ Paris/ Madonna and C...



SC-021_17269_I22F.tif

I-22 F/ Paris/ Alexandrine V...



SC-021_17269_I23F.tif

I-23 F/ Paris/ Alexandrine V...

James J. Rorimer Papers



SC-021_17269_I24F.tif
I-24 F/ Paris/ Alexandrine V...



SC-021_17269_I25F.tif
I-25 F/ Paris/ Alexandrine V...



SC-021_17269_I26F.tif
I-26 F/ Seine/ Chateau de Bo...



SC-021_17269_I27F.tif
I-27 F/ Seine/ Chateau de Bo...



SC-021_17269_I28F.tif
I-28 F/ Seine/ Chateau de Bo...



SC-021_17269_I29F.tif
I-29 F/ Seine/ Chateau de Bo...



SC-021_17269_I30F.tif
I-30 F/ Seine/ Chateau de Bo...



SC-021_17269_I32F.tif
I-32 F/ Seine/ Chateau de Bo...



SC-021_17269_I33F.tif
I-33 F/ Seine/ Chateau de Bo...

James J. Rorimer Papers



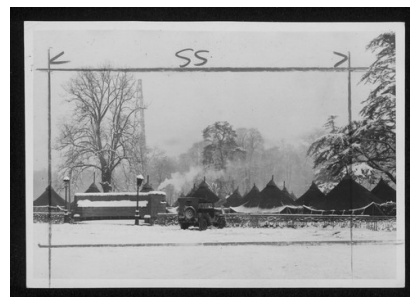
SC-021_17269_I34F.tif

I-34 F/ Seine/ Chateau de Bo...



SC-021_17269_I35F.tif

I-35 F/ Seine/ Chateau de Bo...



SC-021_17269_I36F.tif

I-36 F/ Chateau de Boulogne/...



SC-021_17269_I3F.tif

I-3 F/ Paris/ Garage, 104 ru...



SC-021_17269_I5F.tif

I-5 F/ Paris/ Garage, 104 ru...



SC-021_17269_I6F.tif

I-6 F/ Paris/ Garage, 104 ru...



SC-021_17269_I9F.tif

I-9 F/ Seine et Oise/ Chatea...



SC-021_17270_J0F.tif

J-0 F/ Seine-et-Marne/ Grisy...



SC-021_17270_J10F.tif

J-10 F/ Seine-et-Marne/ Mont...

James J. Rorimer Papers



SC-021_17270_J11F.tif

J-11 F/ Seine-et-Marne/ Mont...



SC-021_17270_J12F.tif

J-12 F/ Seine-et-Marne/ Mont...



SC-021_17270_J13F.tif

J-13 F/ Seine-et-Marne/ Mont...



SC-021_17270_J14F.tif

J-14 F/ Seine-et-Marne/ Mont...



SC-021_17270_J15F.tif

J-15 F/ Seine-et-Marne/ Mont...



SC-021_17270_J16F.tif

J-16 F/ Seine-et-Marne/ Mont...



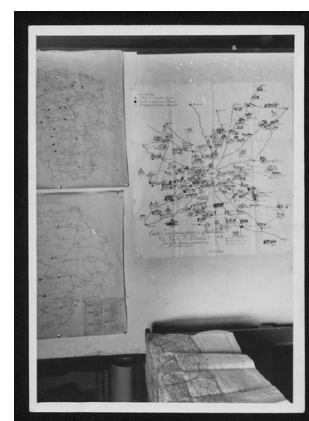
SC-021_17270_J17F.tif

J-17 F/ Seine-et-Marne/ Mont...



SC-021_17270_J18F.tif

J-18 F/ Seine-et-Oise/ Chate...



SC-021_17270_J19F.tif

J-19 F/ Seine/ Map of Seine ...

James J. Rorimer Papers



SC-021_17270_J1F.tif

J-1 F/ Seine-et-Marne/ Grisy...



SC-021_17270_J2F.tif

J-2 F/ Seine-et-Marne/ Suisn...



SC-021_17270_J3F.tif

J-3 F/ Seine-et-Marne/ Suisn...



SC-021_17270_J4F.tif

J-4 F/ Seine-et-Marne/ Suisn...



SC-021_17270_J6F.tif

J-6 F/ Loiret/ Renoir (?) Mo...



SC-021_17270_J7F.tif

J-7 F/ Loiret/ Chateau d'Aug...



SC-021_17270_J8F.tif

J-8 F/ Loiret/ Chateau d'Aug...



SC-021_17270_J9F.tif

J-9 F/ Loiret/ Chateau d'Aug...



SC-021_17271_K11FR.tif

K-11 FR/ Seine et Oise/ Chat...

James J. Rorimer Papers



SC-021_17271_K12FR.tif
K-12 FR/ S. et M./ Fontainbl...



SC-021_17271_K13FR.tif
K-13 FR/ S. et M./ Fontainbl...



SC-021_17271_K14FR.tif
K-14 FR/ S. et O./ Chateau o...



SC-021_17271_K15FR.tif
K-15 FR/ S. et O./ Chateau o...



SC-021_17271_K16FR.tif
K-16 FR/ S. et O./ Courances...



SC-021_17271_K17FR.tif
K-17 FR/ S. et O./ Courances...



SC-021_17271_K18FR.tif
K-18 FR/ S. et O./ Courances...



SC-021_17271_K19FR.tif
K-19 FR/ S. et O./ Courances...



SC-021_17271_K20FR.tif
K-20 FR/ Loiret/ Chateau of ...

James J. Rorimer Papers



SC-021_17271_K21FR.tif
K-21 FR/ Loiret/ Chateau of ...



SC-021_17271_K22FR.tif
K-22 FR/ Loiret/ Chateau of ...



SC-021_17271_K23FR.tif
K-23 FR/ Loiret/ Chateau of ...



SC-021_17271_K24FR.tif
K-24 FR/ Loiret/ Chateau of ...



SC-021_17271_K25FR.tif
K-25 FR/ Loiret/ Chateau of ...



SC-021_17271_K26FR.tif
K-26 FR/ Loiret/ Chateau of ...



SC-021_17271_K27FR.tif
K-27 FR/ Loiret/ Chateau of ...



SC-021_17271_K28FR.tif
K-28 FR/ Loiret/ Chateau of ...



SC-021_17271_K29FR.tif
K-29 FR/ Loiret/ Chateau of ...

James J. Rorimer Papers



SC-021_17271_K2FR.tif

K-2 FR/ Seine/ Foundry at Bl...



SC-021_17271_K30FR.tif

K-30 FR/ Loiret/ Chateau of ...



SC-021_17271_K31FR.tif

K-31 FR/ Loiret/ Chateau of ...



SC-021_17271_K32FR.tif

K-32 FR/ Loiret/ Chateau of ...



SC-021_17271_K33FR.tif

K-33 FR/ Loiret/ Chateau of ...



SC-021_17271_K34FR.tif

K-34 FR/ Loiret/ Chateau of ...



SC-021_17271_K35FR.tif

K-35 FR/ Loiret/ Chateau of ...



SC-021_17271_K36FR.tif

K-36 FR/ Loiret/ Chateau of ...



SC-021_17271_K37FR.tif

K-37 FR/ Loiret/ Chateau of ...

James J. Rorimer Papers



SC-021_17271_K38FR.tif

K-38 FR/ Loiret/ Chateau of ...



SC-021_17271_K4FR.tif

K-4 FR/ Seine/ Foundry at Bl...



SC-021_17271_K6FR.tif

K-6 FR/ Seine/ Foundry at Bl...



SC-021_17271_K7FR.tif

K-7 FR/ Seine/ Foundry at Bl...



SC-021_17271_K8FR.tif

K-8 FR/ Seine/ Foundry at Bl...



SC-021_17271_K9FR.tif

K-9 FR/ Seine/ Foundry at Bl...



SC-021_17272_L10FR.tif

L-11 FR/ Loiret/ Chateau of ...



SC-021_17272_L11FR.tif

L-12 FR/ Loiret/ Chateau of ...



SC-021_17272_L12FR.tif

L-13 FR/ Loiret/ Chateau of ...

James J. Rorimer Papers



SC-021_17272_L13FR.tif
L-14 FR/ Loiret/ Chateau of ...



SC-021_17272_L14FR.tif
L-15 FR/ Loiret/ Chateau of ...



SC-021_17272_L15FR.tif
L-16 France/ Loiret/ Chateau...



SC-021_17272_L16France.tif
L-17 France/ Loiret/ Chateau...



SC-021_17272_L17France.tif
L-18 France/ Loiret/ Chateau...



SC-021_17272_L18France.tif
L-19 GER/ Wurttemberg/ Heilb...



SC-021_17272_L19GER.tif
L-20 GER/ Wurttemberg/ Heilb...



SC-021_17272_L1FR-1.tif
L-2 FR/ Loiret/ Chateau of C...



SC-021_17272_L1FR.tif
L-1 FR/ Loiret/ Chateau of C...

James J. Rorimer Papers



SC-021_17272_L20GER.tif

L-21 GER/ Wurttemberg/ Heilb...



SC-021_17272_L21GER.tif

L-22 GER/ Wurttemberg/ Heilb...



SC-021_17272_L22GER.tif

L-23 GER/ Wurttemberg/ Heilb...



SC-021_17272_L23GER.tif

L-24 GER/ Wurttemberg/ Heilb...



SC-021_17272_L24GER.tif

L-25 GER/ Wurttemberg/ Heilb...



SC-021_17272_L25GER.tif

L-26 GER/ Wurttemberg/ Heilb...



SC-021_17272_L26GER.tif

L-27 Deuchland/ Wurttemberg/...



SC-021_17272_L27Deuchland.tif

L-28 GER/ Wurttemberg/ Cathe...



SC-021_17272_L28GER.tif

L-29 GER/ Wurttemberg/ Heilb...

James J. Rorimer Papers



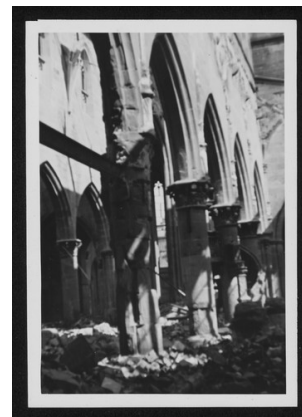
SC-021_17272_L29GER.tif

L-30 GER/ Wurttemberg/ Heilb...



SC-021_17272_L2FR.tif

L-4 FR/ Loiret/ Chateau of C...



SC-021_17272_L30GER.tif

L-31 GER/ Wurttemberg/ Heilb...



SC-021_17272_L31GER.tif

L-32 GER/ Wurttemberg/ Heilb...



SC-021_17272_L32GER.tif

L-33 GER/ Wurttemberg/ Heilb...



SC-021_17272_L33GER.tif

L-34 GER/ Wurttemberg/ Heilb...



SC-021_17272_L34GER.tif

L-35 GER/ Wurttemberg/ Heilb...



SC-021_17272_L35GER.tif

L-36 GER/ Wurttemberg/ Frank...



SC-021_17272_L36GER.tif

L-37 GER/ Kurhessen/ Fulda/ ...

James J. Rorimer Papers



SC-021_17272_L37GER.tif
L-38 GER/ Kurhessen/ Fulda/ ...



SC-021_17272_L38GER.tif
[L-1-1 FR/ Loiret/ Chateau o...



SC-021_17272_L4FR.tif
L-5 FR/ Loiret/ Chateau of C...



SC-021_17272_L5FR.tif
L-6 FR/ Loiret/ Chateau of C...



SC-021_17272_L6FR.tif
L-7 FR/ Loiret/ Chateau of C...



SC-021_17272_L7FR.tif
L-8 FR/ Loiret/ Chateau of C...



SC-021_17272_L8FR.tif
L-9 FR/ Loiret/ Chateau of C...



SC-021_17272_L9FR.tif
L-10 FR/ Loiret/ Chateau of ...



SC-021_17273_001.tif
[Storefront showing Survival ...

James J. Rorimer Papers



SC-021_17273_002.tif

Plaster cast of Venus de Milo...



SC-021_17273_003.tif

Part of an exhibition arrange...



SC-021_17273_004.tif

The tranquil exterior of the ...



SC-021_17273_005.tif

[German vandalism inside the ...



SC-021_17273_006.tif

World-famous Rustic Wedding F...



SC-021_17273_007.tif

The most important painting i...



SC-021_17273_008.tif

Rembrandt Self-Portrait and h...



SC-021_17273_009.tif

[Two paintings, presumably re...



SC-021_17273_010.tif

Original Schiller manuscripts...

James J. Rorimer Papers



SC-021_17273_011.tif

ERR officials in the Jeu de P...



SC-021_17273_012.tif

High Nazi officials at Neusch...



SC-021_17273_013.tif

Dr. Bruno Lohse, Goering sate...



SC-021_17273_014.tif

"Mad Luwig's" castle at Neusc...



SC-021_17273_015.tif

ERR files in a room of the Ne...



SC-021_17273_016.tif

ERR photographic files, by co...



SC-021_17273_017.tif

[Postcard – Schloss Neuschwan...



SC-021_17273_018.tif

ERR council meeting. Rosenber...



SC-021_17273_019.tif

Looted 18th-century furnishin...

James J. Rorimer Papers



SC-021_17273_020.tif

A room in the Neuschwanstein ...



SC-021_17273_021.tif

Here, paintings of Van Dyck a...



SC-021_17273_022.tif

Furniture taken by the Rosenb...



SC-021_17273_023.tif

MFA & A officer James J. Rori...



SC-021_17273_024.tif

Pieces and objects of silver ...



SC-021_17273_025.tif

Rugs and tapestries covered b...



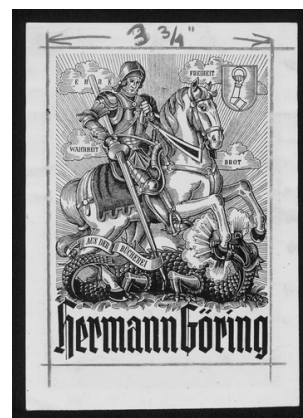
SC-021_17273_026.tif

A French 18th century paintin...



SC-021_17273_027.tif

Reichsmarschall Hermann Goeri...



SC-021_17273_028.tif

Goering's bookplate was found...

James J. Rorimer Papers



SC-021_17273_029.tif

Frau Hofer, wife of Goering's...



SC-021_17273_030.tif

Hitler's Munich headquarters—...



SC-021_17273_031.tif

Most German museums suffered ...



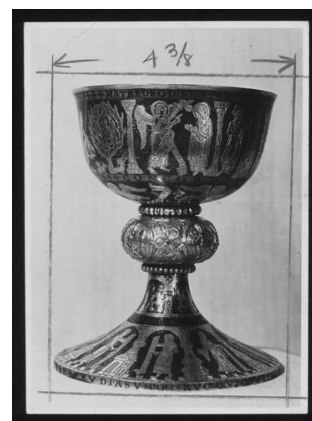
SC-021_17273_032.tif

Some of the 635 gold and silv...



SC-021_17273_033.tif

[Twelfth-century chalice from...



SC-021_17273_034.tif

Twelfth-century chalice from ...



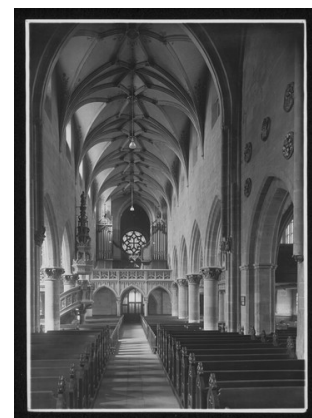
SC-021_17273_035.tif

Another Goering bunker, built...



SC-021_17273_036.tif

Before they were routed from ...



SC-021_17273_037.tif

The Church of St. Killian at ...

James J. Rorimer Papers



SC-021_17273_038.tif

The Church of St. Killian at ...



SC-021_17273_039.tif

[Unidentified photo – scaffol...



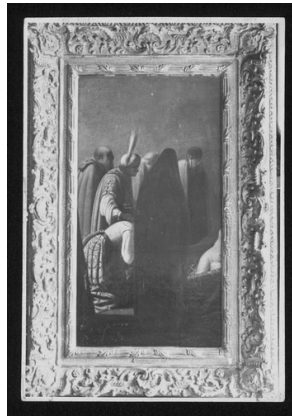
SC-021_17273_040.tif

[Unidentified church spires]



SC-021_17273_K10.tif

K-10 Germany/ Wurt/ Neuenst...



SC-021_17273_K11.tif

K-11 Germany/ Wurt/ Neuenst...



SC-021_17273_N8GER.tif

N-8 GER/ Wurttemberg/ Ulm/ C...



SC-021_17273_N9GER.tif

N-9 GER/ Wurttemberg/ Ulm/ C...



SC-021_17273_O12GER.tif

O-12 GER/ Bavaria/ Munich/ G...



SC-021_17273_O16GER.tif

O-16 GER/ Bavaria/ Berchtesg...

James J. Rorimer Papers



SC-021_17273_O17GER.tif

O-17 GER/ Bavaria/ Berchtesg...



SC-021_17273_O18GER.tif

O-18 GER/ Bavaria/ Berchtesg...



SC-021_17273_O2GER.tif

O-2 GER/ Bavaria/ Berchtesgaden



SC-021_17273_Z10a.tif

[Z-10a Aquamanile - unidenti...



SC-021_17273_Z10GER.tif

Z-10 GER/ Bavaria/ Aquamanil...



SC-021_17172_002.tif

Image



SC-021_17172_003.tif

Image
