



Alfred Stieglitz
American, 1864 - 1946

Margaret Treadwell

1921

gelatin silver print

sheet (trimmed to image): 11 × 8.7 cm (4 5/16 × 3 7/16 in.)

mount: 34.3 × 27.3 cm (13 1/2 × 10 3/4 in.)

Alfred Stieglitz Collection 1949.3.469

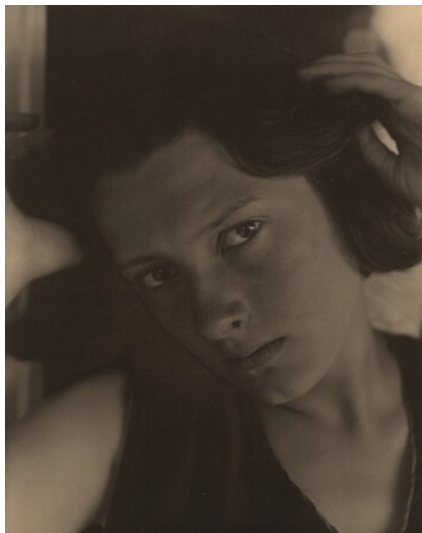
Stieglitz Estate Number 202D

Key Set Number 690

KEY SET ENTRY

Related Key Set Photographs

 NATIONAL GALLERY OF ART ONLINE EDITIONS
Alfred Stieglitz Key Set



Alfred Stieglitz
Margaret Treadwell
1921
palladium print
Key Set Number 686



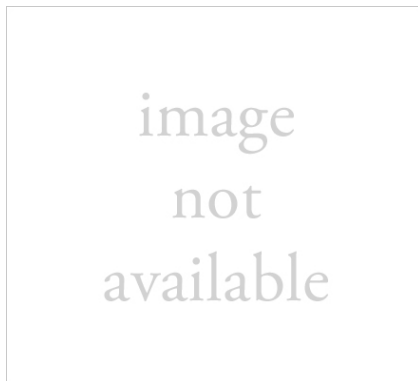
Alfred Stieglitz
Margaret Treadwell
1921
palladium print
Key Set Number 687



Alfred Stieglitz
Margaret Treadwell
1921
palladium print
Key Set Number 688



Alfred Stieglitz
Margaret Treadwell
1921
palladium print
Key Set Number 689



Alfred Stieglitz
Georgia Engelhard and Margaret Treadwell
1921
gelatin silver print
Key Set Number 691

Lifetime Exhibitions

A print from the same negative—perhaps a photograph from the Gallery's collection—appeared in the following exhibition(s) during Alfred Stieglitz's lifetime:

Margaret Treadwell

02 NATIONAL GALLERY OF ART ONLINE EDITIONS
Alfred Stieglitz Key Set

1923, New York (nos. 1–4, as *Margaret Treadwell*, 1921)

INSCRIPTION

by Alfred Stieglitz, on mount, lower left verso, in graphite: Margaret Treadwell / 1921?

by Georgia O'Keeffe, on mount, upper left verso, in graphite: 202D

PROVENANCE

Georgia O'Keeffe; gift to NGA, 1949.

EXHIBITION HISTORY

1995 Alfred Stieglitz at Lake George, Museum of Modern Art, New York,
September 14, 1995–January 2, 1996

BIBLIOGRAPHY

2002 Greenough, Sarah. *Alfred Stieglitz: The Key Set: The Alfred Stieglitz
Collection of Photographs*. Washington, 2002: vol. 1, cat. 690.

To cite: Sarah Greenough, "Alfred Stieglitz/*Margaret Treadwell*/1921," *Alfred Stieglitz Key Set*, NGA Online Editions, <https://purl.org/nga/collection/artobject/35620> (accessed April 18, 2025).