

**National  
Gallery of Art**



**2020  
Annual Report**

**Contents**

**President's Foreword 3**

**Director's Statement 6**

**Board of Trustees, Committees,  
and Trustees' Council 8**

**Year in Highlights 11**

**Treasurer's Report and  
Financial Statements 16**


**Acquisitions 22**

**Changes of Attribution 49**

**Exhibitions and Loans 51**

**Gifts and Donors 74**

**National**  
Gallery of Art

A photograph of two women in a gallery. The woman on the left has short, wavy grey hair and is wearing a blue and white plaid shirt and a blue face mask. She has a brown backpack on her back. The woman on the right is wearing a red headscarf and a red and white striped top. She is pointing her right index finger towards a large, ornate painting on the wall. The painting depicts a historical scene with several figures in 18th-century attire, including a man in a yellow coat and another in a blue coat. The painting is framed in a highly decorative, gilded frame.

**President's  
Foreword**

2020 Annual Report



Mitchell P. Rales

When Andrew W. Mellon wrote to President Franklin D. Roosevelt in 1936 to offer his gift of paintings and sculpture for a new museum in Washington, DC, that he would build and finance with his own funds, he stipulated that

the museum not bear his name. Mellon believed that it should be a truly national institution with no single individual's name but with a name that identified it as a museum for and of the American people. This emphasis on the national character of the National Gallery of Art is at the very heart of the vision that continues to guide the museum today. This past year, Americans have endured unimaginable loss and hardship due to the COVID-19 pandemic. It has also been a year that has witnessed the great resilience of the American people. President Roosevelt's words from 1941, marking the opening of the National Gallery, resonate profoundly at this moment when hope and renewal are on the horizon. "The dedication of this gallery to a living past and a greater and more richly living future is the measure of the earnestness of our intention that the freedom of the human spirit shall go on too."

As an institution "Of the Nation and for the People," the National Gallery of Art has the

responsibility and privilege to serve our country by welcoming all people to explore and experience art, creativity, and our shared humanity. As stewards of Andrew Mellon's long-ranging vision, the trustees and I, along with Director Kaywin Feldman and the staff, are committed to reflecting and serving the nation in all its diversity while continuing to operate a financially sustainable institution. We are dedicated to expanding the reach of the National Gallery and sharing its educational resources in new ways so that all Americans can engage with the nation's art collection. This work is only possible because of the indissoluble public-private partnership between the federal government and private citizens that sustains this remarkable institution. The trustees and staff join me in expressing our sincere gratitude to the President and the Congress of the United States for their unwavering support of the National Gallery.

The vital support of the federal government continues to be complemented by the private patronage of citizens whose gifts fund essential programs and activities, from collecting and exhibiting in ways that reflect our nation and its histories, to preserving the collections for future generations, delivering compelling public programs and events, engaging digital experiences, and groundbreaking scholarship. We are so grateful to the National Gallery's steadfast mem-

bers and donors whose generous gifts enable the museum to extend its reach to broader audiences—the significance of which has become even more evident in the past year. In the second half of fiscal year 2020, the National Gallery successfully transitioned to all virtual programming, significantly expanding its reach. People across the institution, including the tireless security officers, ensured that the Sculpture Garden was the first space to reopen on the National Mall during the pandemic, followed by the Ground Floor galleries of the West Building a month later. The phased approach to reopening the National Gallery's campus prioritized safety first, as well as the museum's crucial mission to serve the public. My fellow trustees join me in thanking Kaywin and all the dedicated staff of the National Gallery for approaching the uncertainty of the past year with careful planning and commendable agility.

I am also grateful to my fellow trustees and the Trustees' Council for their unfaltering support and wisdom. The board was recently joined in their work by educator and author Laura Arrillaga-Andreessen, who founded the Stanford Center on Philanthropy and Civil Society, the Laura Arrillaga-Andreessen Foundation, and the Silicon Valley Social Venture Fund. I am thrilled that Laura has agreed to serve as a trustee of the nation's art museum. On behalf of the Board of Trustees, I welcome our newest member and

look forward to working with her to plan for the museum's future.

Having reflected a great deal during the pandemic about what might continue, what might be best left behind, and what should be carried into the future, I can tell you firsthand the National Gallery's sights are set firmly on the horizon, and our best days are in front of us. We look forward to fostering meaningful encounters with the nation's art collection and expanding opportunities to connect the resources of the National Gallery to an even wider national and international audience in the years ahead. Thank you for joining us in this endeavor.

Mitchell P. Rales

# National Gallery of Art



## Director's Statement

2020 Annual Report



Kaywin Feldman

Our nation faced historic challenges this year with the emergence of a pandemic that wrought a tragic loss of life, societal upheaval, and economic devastation. Many of the country's beloved cultural institutions and art museums endured extensive temporary closures that in some cases became permanent.

Amid the heartbreak, the National Gallery of Art strove to match its mission to the moment. Its foundation as an inviolable partnership between the federal government of the United States of America and private citizens enabled the continued service to the nation and diligent stewardship of the country's fine arts collection. Its values—generosity, excellence, integrity, agility, and inclusiveness—guided all programming and decision-making.

In March 2020 the spread of COVID-19 triggered a national emergency. To safeguard the health of staff and visitors, the National Gallery closed its buildings on March 13 and pivoted to robust digital operations. The staff developed expanded content across the National Gallery's website and social media platforms and offered virtual symposia, lectures, and exhibition tours; resources for parents and schools; and concerts and film programs. Followers, impressions, page

views, and engagement grew exponentially on all platforms, and most dramatically for children's resources and collection highlights on the website.

Once rigorous health and safety protocols were in place, the Sculpture Garden reopened in June, followed by the West Building galleries in July. Major exhibitions that had been shuttered at the start of the pandemic, including *Degas at the Opéra* and *True to Nature: Open-Air Painting in Europe, 1780–1870*, reopened to grateful visitors.

Over the course of the year we bid farewell to senior leaders who shaped the National Gallery for decades including Darrell Willson, who had served as administrator since 1994, and Elizabeth Cropper, dean of the Center for Advanced Study in the Visual Arts since 2000. With characteristic dedication, they both postponed their planned retirements to ensure continuity of leadership at the start of the pandemic.

The National Gallery added new executive team members to guide the future of the museum. Sheila McDaniel was appointed the seventh administrator, and Steven Nelson was appointed the third dean of the Center for Advanced Study in the Visual Arts. Two entirely new executive officer positions were created: an external affairs and audience engagement officer, filled by Elisa Glazer, and a collections, exhibitions, and programs officer, filled by Kate Haw. They joined long-standing executive officers Nancy Breuer, secretary and general counsel; Franklin

Kelly, chief curator and Christiane Ellis Valone Curator of American Paintings; and William McClure, treasurer.

As the nation's art museum, the National Gallery has a responsibility and an opportunity to fully represent the diversity of the United States. The National Gallery will continue to diversify its staff, volunteers, collection, exhibitions, publications, and programs. This work was strengthened in fiscal year 2020 with the appointment of Mikka Gee Conway as the museum's first chief diversity, inclusion, and belonging officer.

As we move forward, the National Gallery has a unique moment to be thoughtful and intentional about how to use its collections, exhibitions, research, and public programs to deepen its relationship with and impact on audiences. If history is a guide, after the pandemic the National Gallery can look forward to serving a strengthened nation, filled with great optimism. In 1941, the National Gallery of Art was "dedicated forever to the use and enjoyment of the people of the United States." Eighty years later, the trustees and staff are excited to be a part of the nation's invigorated future. I am tremendously grateful for the steadfast support of the federal government, the generosity of National Gallery trustees, donors, and members, and the commitment of its staff, who make this possible.

Kaywin Feldman

**National  
Gallery of Art**



**Board of  
Trustees,  
Committees, and  
Trustees' Council**

2020 Annual Report



## **Board of Trustees**

(as of September 30, 2020)

Sharon P. Rockefeller, Chairman

Mitchell P. Rales, President

Laura Arrillaga-Andreessen

David M. Rubenstein

Darren Walker

John G. Roberts Jr., Chief Justice of the  
United States

Michael R. Pompeo, Secretary of State

Steven T. Mnuchin, Secretary of the Treasury

Lonnie G. Bunch III, Secretary of the  
Smithsonian Institution

### **Trustees Emeriti**

Frederick W. Beinecke

Julian Ganz, Jr.

Alexander Laughlin

David O. Maxwell

Andrew M. Saul

John Wilmerding

## **Committees**

(as of September 30, 2020)

### **Art & Education Committee**

Mitchell P. Rales, Chairman

Laura Arrillaga-Andreessen

Kaywin Feldman

Sharon P. Rockefeller

David M. Rubenstein

Darren Walker

### **Finance Committee**

David M. Rubenstein, Chairman

Sharon P. Rockefeller

Darren Walker

### **Audit Committee**

Darren Walker, Chairman

Mitchell P. Rales

Sharon P. Rockefeller

David M. Rubenstein

### **Governance and Compensation Committee**

Mitchell P. Rales, Chairman

Laura Arrillaga-Andreessen

Sharon P. Rockefeller

Darren Walker

### **Executive Committee**

Mitchell P. Rales, Chairman

Laura Arrillaga-Andreessen

Sharon P. Rockefeller

David M. Rubenstein

Darren Walker

## **Trustees' Council**

(as of September 30, 2020)

Benjamin R. Jacobs, Cochair

Jo Carole Lauder, Cochair

Debra Black

Louise Bryson

Vincent J. Buonanno

Buffy Cafritz

Calvin Cafritz  
Louisa Duemling  
Gregory W. Fazakerley  
Marina Kellen French  
Norma Lee FUNGER  
Whitney Ganz  
Rose Ellen Greene  
Joseph P. Gromacki  
Andrew S. Gundlach  
Jane M. Hamilton  
Teresa Heinz  
Betsy K. Karel  
Kasper †  
Linda H. Kaufman  
Mark J. Kington  
Kyle J. Krause  
Thomas L. Lloyd  
Reid V. MacDonald  
Nancy Marks  
Jacqueline B. Mars

Robert B. Menschel  
Constance J. Milstein  
Scott Nathan  
Courtney Clark Pastrick  
Tony Podesta  
Diana C. Prince  
Hilary Geary Ross  
Roger W. Sant  
B. Francis Saul II  
Denise Saul  
Stephen G. Stein  
Luther M. Stovall  
Diana Walker  
Andrea Woodner

Alexander M. Laughlin  
David O. Maxwell  
Andrew M. Saul  
John Wilmerding

† Deceased

**Honorary Trustees' Council**

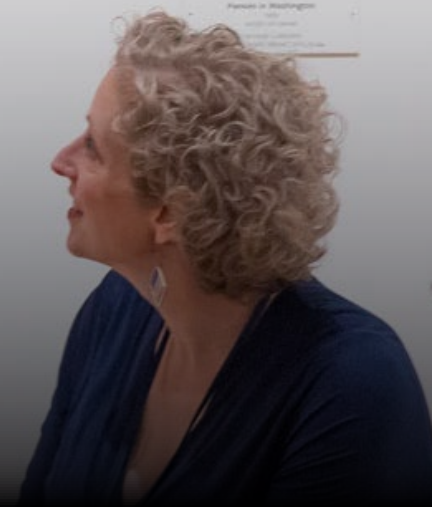
Frederick W. Beinecke  
Edwin L. Cox †  
Doris Fisher  
Juliet C. Folger  
Julian Ganz, Jr.

# National Gallery of Art



## Year in Highlights

2020 Annual Report





Jaune Quick-to-See Smith, *I See Red: Target*, 1992, mixed media on canvas, Purchased with funds from Emily and Mitchell Rales, 2020.6.1

## Jaune Quick-to-See Smith

### *I See Red: Target*

In 2020, the National Gallery of Art acquired *I See Red: Target* by Jaune Quick-to-See Smith (born 1940), the first painting by a Native American artist to enter the collection. Smith, an enrolled Salish member of the Confederated Salish and Kootenai Nation in Montana, is one of the most highly respected artists of the past 40 years. An impressive 11-foot-tall mixed-media work on canvas, *I See Red: Target* addresses both local and national conversations around the commercial branding of Indigenous American identity through Smith's deftly layered assemblage of printed ephemera and painterly touches. The acquisition was made possible by Mitchell and Emily Rales.

## Adriaen Coorte

### *Still Life with a Hanging Bunch of Grapes, Two Medlars, and a Butterfly*

The still-life paintings by Adriaen Coorte (active c. 1683–1707) are among the most mysterious and compelling works of art produced in the Netherlands during the 17th century. Thanks to the generosity of The Lee and Juliet Folger Fund, the National Gallery was able to acquire *Still Life with a Hanging Bunch of Grapes, Two Medlars, and a Butterfly*.

and a Butterfly, a particularly striking work by the artist and one of only three known compositions in which the dominant element is suspended in midair before a dark background. This is the second painting by Coorte to enter the nation's art collection.



Adriaen Coorte, *Still Life with a Hanging Bunch of Grapes, Two Medlars, and a Butterfly*, 1687, oil on canvas, The Lee and Juliet Folger Fund, 2020.16.1



*Degas at the Opéra* was organized by the National Gallery of Art, Washington, and the Musées d'Orsay et de l'Orangerie, Paris. BP America was proud to be a sponsor of this Washington, DC, exhibition as part of its support for the arts in the United States. Adrienne Arsht also kindly provided a leadership gift for this exhibition. Additional funding was provided by Jacqueline B. Mars and The Exhibition Circle of the National Gallery of Art. The exhibition was supported by an indemnity from the Federal Council on the Arts and the Humanities.

## ***Degas at the Opéra***

Dedicated to Edgar Degas's fascination with the opéra—its spaces, the music, and the people involved with the thriving theatrical life of 19th-century Paris—*Degas at the Opéra* was open for fewer than two weeks before the National Gallery of Art closed due to the COVID-19 pandemic.

The museum adjusted to the unexpected closure by creating a dynamic virtual exhibition tour available to the public online. When the West Building partially reopened in July 2020, the exhibition opened to the public once more, drawing many delighted and grateful visitors during its extended run.

## **Honoring Resilience**

### ***Katharina Fritsch's Hahn/Cock***

A beloved addition to the East Building's Roof Terrace since it opened in 2016, Katharina Fritsch's *Hahn/Cock* was illuminated in honor of the resilience of the American people during the COVID-19 pandemic. The work was bathed



Katharina Fritsch, *Hahn / Cock*, 2013, glass fiber reinforced polyester resin fixed on stainless steel supporting structure, Gift of Glenstone Foundation, 2020.23.1

in blue light in April 2020, along with the West Building facade and crystals in the 4th Street Plaza, as part of the #LightItBlue campaign to honor the dedication and effort of essential workers, including the National Gallery's own security and facilities staff.



A National Gallery security officer patrols the ground during the museum's closure due to COVID-19.

## **Service During Crisis**

During the coronavirus crisis, the dedicated employees of the National Gallery of Art continued to maintain and protect the facilities and collections. Security, facilities, horticulture, and art care staff were on site each day to ensure that the National Gallery's buildings, collections, and grounds were safe and well cared for.



Visitors wearing masks and observing new safety protocols return to the National Gallery's Sculpture Garden in June 2020.

## Sculpture Garden Reopening

The National Gallery of Art closed to the public in March 2020 due to the COVID-19 pandemic. In the summer, with enhanced health and safety measures in place, the Sculpture Garden was the first space to reopen on the National Mall, followed by the Ground Floor of the West Building.

## West Building Reopening

New visitor guidelines and free, timed entry passes ensured a safe experience for members of the public as they returned to the partially reopened Ground Floor galleries of the West

Building. Two special exhibitions that were open at the time of the National Gallery's March closure, *Degas at the Opéra* and *True to Nature: Open-Air Painting in Europe, 1780–1870*, reopened with extended dates.



National Gallery staff welcome visitors back to the West Building in July 2020.

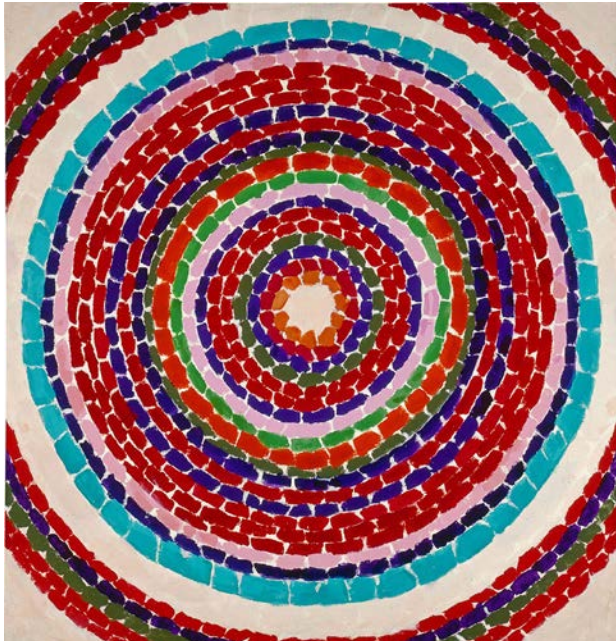
## Massive Open Online Course

Since launching in early 2019, the Massive Open Online Course (MOOC) *Teaching Critical Thinking through Art* has reached over 19,000 participants from across the nation and around the world. Featuring a variety of demonstration videos and



A National Gallery educator uses critical thinking strategies to engage students in a lesson filmed at the museum and available anywhere in the world through the Massive Open Online Course (MOOC) *Teaching Critical Thinking through Art*. This NGA Online Course was made possible by a generous grant from the Ruth S. Willoughby Foundation. Additional funding was provided by Mr. and Mrs. J. Bruce Whelihan.

interactive tools, this five-unit course prepares teachers to incorporate works of art into classroom practices with Artful Thinking routines—critical thinking strategies developed by Project Zero at the Harvard Graduate School of Education.



Alma Thomas, *Pansies in Washington*, 1969, acrylic on canvas, Corcoran Collection (Gift of Vincent Melzac), 2015.19.144

The 2020 Summer Institute was supported by generous gifts from the Park Foundation, the William Randolph Hearst Foundation, the Sara Shallenberger Brown Fund, the PaineWebber Endowment, and the Annetta J. and Robert M. Coffelt Sr. and Robert M. Coffelt Jr. Endowed Fellowship.

## Summer Institute for Educators

Piloted in an online format in 2020, the 31st Summer Institute for Educators more than doubled in size, facilitating 163 teachers from 17 countries worldwide and helping to expand access to the National Gallery's world-class educational resources during a time when teaching routines were upended. The Summer Institute centered around the theme *Art and Thinking* and offered relevant content about critical thinking, teaching virtually, diversity, and social-emotional learning through art. Since its inaugural session in 1989, the National Gallery has offered this program annually, fostering meaningful connections between teachers, students, and the museum's collection.

## East Building Skylights

The Master Facilities Plan (MFP) is a long-term program of federally funded capital improvements developed to renew the useful life of the National Gallery's buildings and engineered systems. This year, progress continued on Work Area 9.3, the final phase of renovation in the East Building public spaces. One major component of this

project is the replacement of the East Building atrium skylights, which have not been renovated since the building opened in 1978. The complete replacement of all 25 glass tetrahedrons and the aluminum frames will correct long-standing problems with deterioration of the insulated glass units and provide improved energy efficiency.



National Gallery contractors work to replace the East Building atrium skylights as part of the Master Facilities Plan.

**National  
Gallery of Art**



**Treasurer's  
Report and  
Financial  
Statements**

2020 Annual Report



## Treasurer's Report

The financial position of the National Gallery of Art remained strong in fiscal year 2020 despite tremendous challenges resulting from the COVID-19 global pandemic. The National Gallery achieved this through prudent management of expenses combined with favorable performance of the investment portfolio; strong support from Congress and the administration; and the continued generosity of private citizens, foundations, and corporations.

The federal commitment to operate and maintain the National Gallery originates in the 1937 Joint Resolution of Congress that accepted Andrew W. Mellon's unprecedented gift to the nation of his art collection, the funds to construct the West Building, and an endowment. The Joint Resolution pledged that the United States would provide funds for the upkeep, administrative expenses, and costs of operations, including the protection and care of the works of art given to the nation, so that the National Gallery would at all times be properly maintained and remain open to the public free of charge.

The National Gallery receives annual federal appropriations to support core programs and renovations of its buildings as part of the budget approved annually by Congress and signed by the president. Income from endowments as well as gifts and grants designated by donors for other

specific purposes supplement the federal appropriations. Endowment support for expenditures is computed under the National Gallery's spending policy and used in accordance with donor-imposed restrictions. The National Gallery is a non-profit organization exempt from federal income taxes under the provisions of Section 501(c)(3) of the Internal Revenue Code.

### Financial Position

The National Gallery's net assets totaled \$1.4 billion on September 30, 2020, increasing by \$112.3 million or 8.5 percent during the fiscal year. This result is mainly due to the performance of the investment portfolio which ended the year at \$1.056 billion, up \$89.1 million net of new gifts, manager fees, and spending to support operations and art purchases. After experiencing steep declines in February and March due to the emerging pandemic, the portfolio rebounded strongly returning 11.3 percent for the fiscal year and exceeding the National Gallery's custom investable benchmark by 260 basis points. Performance was positive across all asset classes, but US and international equities contributed the most powerfully to performance. The value of other investments and trusts held by others totaled \$27.3 million, increasing \$0.6 million over the prior year. Cash balances remained consistent with the prior year.

Property, plant, and equipment assets increased \$22.9 million over the prior year, representing \$40.2 million of capital expenditures partly offset by depreciation expense. Work continued on the renovation of the East Building atrium skylight and adjacent spaces. This project is included in the National Gallery's comprehensive Master Facilities Plan, a federally funded, long-term capital renewal program designed to address life safety, security, and infrastructure improvements necessary to maintain and protect the National Gallery's buildings. As part of this major East Building renovation project, construction began on an emergency exit stairway serving all levels of Tower 3. New entrance doors were installed to accommodate all visitors, and the location and capacity of public restrooms was improved to meet standards required by the Americans with Disabilities Act. The main East Building electrical service was upgraded, and work was begun on the installation of six gas-fired boilers in the East Building basement. The new boilers will replace steam provided by a third-party utility service and will increase reliability and energy efficiency while reducing cost. Eventually, the new boilers will provide hot water for all National Gallery heating and cooling needs.

Pledges receivable increased by \$3.9 million due mainly to endowment and art acquisition pledges from generous National Gallery donors. Liabilities remained consistent with the prior year.

## Operating Results

The National Gallery ended the fiscal year with an unrestricted operating loss of \$1.5 million before depreciation and amortization due to impacts from the pandemic. As the danger of the virus became known, the National Gallery closed to the public beginning March 14 to protect the safety of staff and visitors. On July 20, parts of the West Building reopened with strict limits on visitor capacity. As a result, fiscal year attendance was a small fraction of normal levels, and the National Gallery's retail operations suffered losses. These retail losses combined with reduced membership income from cancelled special events contributed most heavily to the operating loss.

Operating support and revenue totaled \$168.2 million in fiscal year 2020, decreasing \$6.8 million, or 3.9 percent, from fiscal year 2019. Federal support recognized for operations totaled \$136.6 million versus \$137.4 million in the prior year. Gifts from individuals, corporations, and foundations continued to play a critical role in supporting the National Gallery's outstanding—but greatly curtailed—exhibition, education, curatorial, and conservation programs in fiscal year 2020. A major endowment gift was received this year, ensuring the successful completion of a matching requirement for The Andrew W. Mellon Foundation challenge grant celebrating the National Gallery's 75th anniversary. Operating

gifts and grants totaled \$5.4 million, a decrease of \$3.4 million from fiscal year 2019, primarily as a result of fewer exhibition and other on-site programs as well as a reduction in unrestricted membership gifts due to the pandemic.

Funds appropriated under the National Gallery's investment spending policy totaled \$21.9 million versus \$20.6 million in fiscal year 2019. Royalties and other income totaled \$0.6 million, down from \$1.4 million in the prior year due primarily to reduced food service income and exhibition tour fees caused by the pandemic closure.

Fiscal year 2020 operating expenses totaled \$169.7 million, decreasing \$4.3 million from the prior year, as exhibitions and public programs were postponed or cancelled. In response to the physical constraints caused by the pandemic, the National Gallery greatly expanded its online digital offerings through its website and social media platforms to continue serving the public. Innovative and interactive virtual exhibition tours, lectures, and courses; films; and podcasts were created, and online audiences surged. The National Gallery's collection was augmented by several major purchases in fiscal year 2020, including Anne-Louis Girodet de Roussy-Trioson's *Coriolanus Taking Leave of His Family* (1786), Adriaen Coorte's *Still Life with a Hanging Bunch of Grapes, Two Medlars, and a Butterfly* (1687), and Dirck Hals's *Merry Company on a Terrace* (1625).

## Auditors Report and Financial Statements

Summarized financial information is shown below. The National Gallery's complete fiscal year 2020 audited financial statements, related notes, and the auditors' reports thereon can be found on the National Gallery's website. The National Gallery's external auditors issued an unmodified opinion on the fiscal year 2020 financial statements and did not identify any material weaknesses, significant deficiencies, or areas of noncompliance with laws and regulations.

William W. McClure  
Treasurer

SUMMARIZED STATEMENTS OF FINANCIAL POSITION AND CHANGE IN NET ASSETS

Years ended September 30, 2020 and 2019

(In thousands)

STATEMENTS OF FINANCIAL POSITION

ASSETS

	2020	2019
Cash and cash equivalents	\$ 118,003	\$ 121,588
Pledges, accounts receivable, and other assets	22,038	18,907
Investments and trusts held by others	1,083,406	993,753
Property, plant, and equipment, net	341,032	318,116
Total assets	<u>1,564,479</u>	<u>1,452,364</u>

LIABILITIES AND NET ASSETS

LIABILITIES:

Environmental liability	28,660	26,423
Other liabilities	101,851	104,262
Total liabilities	<u>130,511</u>	<u>130,685</u>

NET ASSETS:

Without donor restrictions	596,674	570,729
With donor restrictions	837,294	750,950
Total net assets	<u>1,433,968</u>	<u>1,321,679</u>
Total liabilities and net assets	<u>\$ 1,564,479</u>	<u>\$ 1,452,364</u>

CHANGE IN NET ASSETS

Net assets at beginning of year	\$ 1,321,679	\$ 1,327,442
Change in net assets from operating activities	(1,522)	1,024
Donor-restricted gifts and federal appropriations	56,467	35,474
Investment return in excess of amount appropriated for operations	85,837	(6,450)
Acquisitions of art	(8,570)	(13,035)
Environmental liability change in value	(1,467)	(5,402)
Depreciation expense and other	(18,456)	(17,374)
Change in net assets	<u>112,289</u>	<u>(5,763)</u>
Net assets at end of year	<u>\$ 1,433,968</u>	<u>\$ 1,321,679</u>

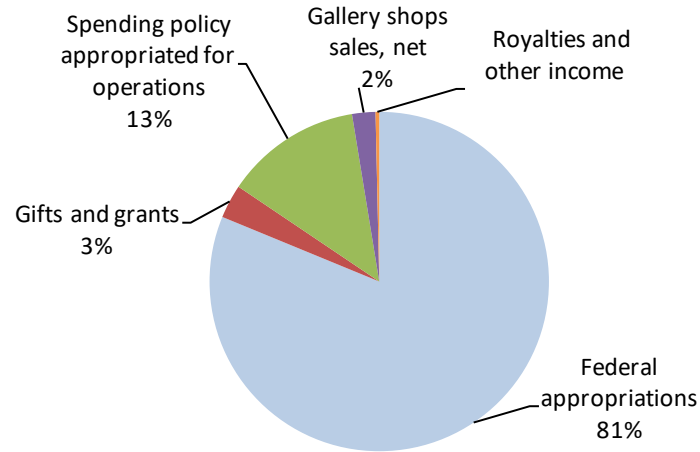
SUMMARIZED STATEMENT OF OPERATIONS  
Years ended September 30, 2020 and 2019  
(In thousands)

	<u>2020</u>	<u>2019</u>
UNRESTRICTED SUPPORT AND REVENUE		
Federal appropriations	\$ 136,605	\$ 137,397
Gifts and grants	5,413	8,845
Spending policy appropriated for operations	21,856	20,625
Gallery shops sales, net	3,739	6,789
Royalties and other income	590	1,383
Total support and revenue	<u>168,203</u>	<u>175,039</u>
UNRESTRICTED EXPENSES*		
Collections	51,493	53,031
Special exhibitions	20,495	24,473
Education, Gallery shops, and public programs	43,874	44,424
Editorial and photography	7,583	7,171
General and administrative	41,593	40,394
Development	4,687	4,522
Total expenses	<u>169,725</u>	<u>174,015</u>
Change in net assets from operating activities	<u>\$ (1,522)</u>	<u>\$ 1,024</u>

\* excluding depreciation and amortization

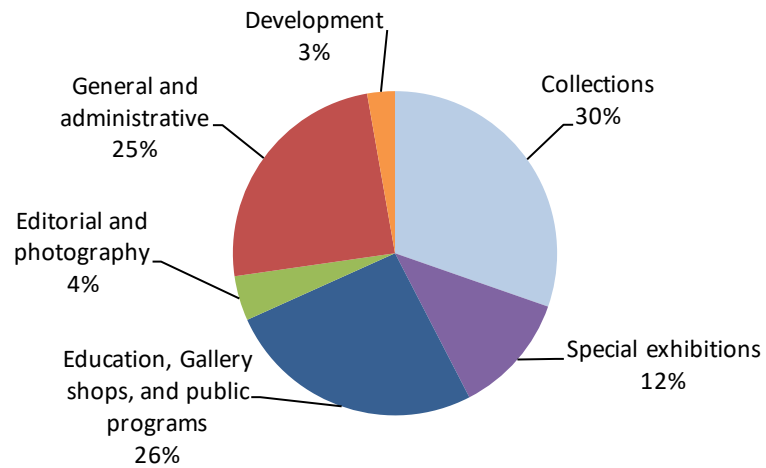
2020 UNRESTRICTED OPERATING SUPPORT AND REVENUE  
\$168,203 (In thousands)

---



2020 UNRESTRICTED OPERATING EXPENSES BEFORE DEPRECIATION AND AMORTIZATION  
\$169,725 (In thousands)

---



# National Gallery of Art



## Acquisitions

2020 Annual Report



Emma Amos, *Red Line Drawing*, 1981, handmade paper created with paper pulp and torn pieces of an etching, Gift of the Collectors Committee, 2019.164.1

## Drawings

Albee, Percy, American, 1883–1959

- *The Butcher's*, graphite, 2020.95.2, Corcoran Gallery of Art (Gift of P. Frederick Albee in honor of my late wife, Helen P. Albee)

Allongé, Auguste, French, 1833–1898

- *Landscape with Three Tall Trees*, c. 1860, black chalk and charcoal with stumping, heightened with white chalk on blue-gray paper, 2019.146.1, Purchased as the Gift of Merritt P. Dyke

Amos, Emma, American, 1937–2020

- *Red Line Drawing*, 1981, handmade paper created with paper pulp and torn pieces of an etching, 2019.164.1, Gift of the Collectors Committee

Bianchi, Mosè, Italian, 1840–1904

- *La Pusterla dei fabbri a Milano*, c. 1888, charcoal with stumping, graphite, and pen and black ink, 2020.74.1, Joseph F. McCrindle Endowment Foundation

Boldini, Giovanni, Italian, 1842–1931

- *Bust of a Young Woman in Profile*, late 19th century, black chalk, 2020.44.1, Purchase for the Virginia and Ira Jackson Collection

Bourdon, Sébastien, French, 1616–1671

- *The Finding of Moses*, c. 1655/1660, black chalk, 2020.79.1, Gift of Kenneth and Amy Eisen-Krupsky, from the collection of Charles and Sylvia Eisen

Brenta, Luigi, Italian, born 1800

- *The Madonna and Child Enthroned with a Bishop Saint and a Kneeling Ecclesiastic*, c. 1820s, pen and brown ink with brown wash, 2020.62.1, Ailsa Mellon Bruce Fund

Brongdeest, Albertus, Dutch, 1786–1849

- *Studies of a Plow, Baskets, and Agricultural Implements*, early 19th century, black chalk with pen and brown ink and brown wash, 2020.84.1, Joseph F. McCrindle Endowment Fund

Brycker, B. de, German, active late 19th century

- *Coastal Seascape*, c. 1880, gouache on paper-board, 2019.156.1, Gift of Christopher and Beverly With in memory of Karl and Gerda With

Campi, Antonio, Italian, 1523–1587

- *Virgin and Child with Saint Jerome and Mary Magdalene*, c. 1546/1547, pen and brown ink with brown wash, heightened with white gouache, over traces of black chalk, squared in black chalk, 2019.141.1, Ruth and Jacob Kainen Memorial Acquisition Fund

Carrogis, Louis de, called Carmontelle, French, 1717–1806

- *The Maréchal de Brissac*, 1763, watercolor over graphite and chalk, 2020.17.1, Gift of John O'Brien in honor of Meg Grasselli, for a long friendship

Castello, Bernardo, Italian, 1557–1629

- *David Playing the Harp Before Saul*, c. 1602, pen and black and brown ink with black chalk and brown wash, heightened with white gouache on blue paper, squared in black chalk, 2019.126.1, Ailsa Mellon Bruce Fund

Castello, Giovanni Battista, called Bergamasco, Italian, 1509–1569

- *Design for an Altar*, 1550s, black chalk and pen and brown ink with brown wash, 2020.80.1, Gift of Ann and Matthew Nimetz

Corrodi, Salomon, Swiss, 1810–1892

- *Street Vendors and Figures before the Basilica di San Lorenzo, Florence*, 1842, pen and brown ink with brown wash, 2019.145.1, Ailsa Mellon Bruce Fund

Cox, David, British, 1783–1859

- *The Heather or Broom Gatherers*, 1851, watercolor, 2020.88.1, Purchased as the Gift of Alexander M. and Judith W. Laughlin

d'Aligny, Théodore Claude Félix Caruelle, French, 1798–1871

- *Marlotte in the Forest of Fontainebleau*, 1851, graphite and white chalk on buff paper, 2020.85.1, Purchased as the Gift of Merritt Porter Dyke

David, Giovanni, Italian, 1743–1790

- *Arcadian Landscape*, c. 1775, pen and ink and watercolor over black chalk, 2020.35.1, Ailsa Mellon Bruce Fund

Deshays, Jean-Baptiste, French, 1729–1765

- *A Man Drawing*, c. 1750, black and white chalk on beige paper, laid down on old mount, 2019.136.1, Ailsa Mellon Bruce Fund

Dutch 17th Century

- *Landscape*, 17th century, brown wash over black chalk, on an old mount, 2019.184.11, Gift in memory of Yves Zelnick

Dutch 18th Century

- *Design for a Ceiling: Aeolus Seated on Clouds Surrounded by Putti*, 18th century, black, white, and red chalk on blue paper, 2019.139.1, Ailsa Mellon Bruce Fund

Fontanesi, Antonio, Italian, 1818–1882

- *Young Girl Standing by a Stream*, c. 1865, watercolor over graphite with scraping out, 2019.147.2, Ailsa Mellon Bruce Fund

Gael, Barend, Dutch, 1620–1687

- *A Hawking Party Setting off from a Country House*, 1660s, black chalk and gray wash, 2020.75.1, Ailsa Mellon Bruce Fund

Gardner, Daniel, British, 1750–1805

- *The Yorke Family*, c. 1775, gouache, pastel paste, and pastel with graphite and possibly black chalk on prepared paper mounted to canvas (on a wooden stretcher), 2019.142.1, Patrons' Permanent Fund

Garzi, Luigi, Italian, 1638–1721

- *Saint Catherine of Siena on a Cloud*, 1696/1697, black chalk heightened with white chalk on blue paper, 2020.64.1, Purchased as the Gift of Robert B. Loper and Ailsa Mellon Bruce Fund

Gimignani, Giacinto, Italian, 1606–1681

- *The Holy Family with Saint Philip Neri in Adoration, an Angel, and Putti*, 1649, pen and brown ink with brown wash over black chalk, heightened with white gouache, incised and the verso blackened for transfer, 2019.129.1, Ailsa Mellon Bruce Fund and Purchased as the Gift of Robert B. Loper



Grevedon, Henri, French, 1776–1860

- *Adrien Perlet, Actor*, 1838, graphite heightened with white gouache on buff paper, 2019.184.12, Gift in memory of Adolph and Jeanne Zelnick

Horter, Earl, American, 1881–1940

- *Still Life #2*, 1939, watercolor, 2020.94.1, Ruth and Jacob Kainen Memorial Acquisition Fund

Langley, Walter, English, 1852–1922

- *The Steps of a House at Mousehole, Cornwall*, 1880, watercolor, 2020.49.1, Joseph F. McCrindle Endowment Fund

Lewis, John Frederick, British, 1805–1876

- *Head of a Spanish Monk*, 1832/1834, watercolor and chalk over graphite, heightened with gouache, 2020.49.2, Joseph F. McCrindle Endowment Fund

Looper, Willem de, American, born the etherlands, 1932–2009

- *Untitled IV*, 1989, acrylic and gouache, 2019.156.2, Gift of Christopher and Beverly With in memory of Karl and Gerda With

Michetti, Francesco Paolo, Italian, 1851–1929

- *Two Studies of a Woman Carrying a Gourd [recto]; Three Studies of a Standing Girl [verso]*, c. 1873, black chalk, 2020.86.5.a, b, Ailsa Mellon Bruce Fund

Millet, Jean-François, French, 1814–1875

- *Path in the Countryside, Vichy*, 1866/1868, pen and brown ink with brown wash, 2020.91.1, Purchased as the Gift of Joan and David Maxwell in Honor of Margaret Morgan Grasselli

Noel, Amelia, British, 1794–1810

- *Wooded Landscape with Figures outside a Cottage*, 1795, watercolor over graphite with scratching out, 2020.50.1, Ailsa Mellon Bruce Fund

Petlin, Irving, American, 1934–2018

- *Arles*, 1961, pastel, 2019.160.1, Gift of Odyssea Skouras

Piattoli, Giuseppe, Italian, 1748–1834

- *Christ Falling under the Cross*, late 18th century, pen and brown ink with brown wash, 2020.73.1, Ailsa Mellon Bruce Fund

Richmond, George, British, 1809–1896

- *Tom—Florence*, 1838, graphite, white gouache, and pen and brown ink on tan paper, 2020.38.4, Joseph F. McCrindle Endowment Fund

- *A Farm near the Sea at Margate, Kent*, 1850, watercolor over graphite with gum arabic, 2020.78.1, Gift of Connie Simmons and James D. Krugman

Ryland, Henry, English, 1856–1924

- *Study of Bay Leaves*, before 1898, graphite on dark green paper, 2020.92.1, William B. O'Neal Fund

Setti, Ercole, Italian, 1530–1617

- *The Transfiguration*, c. 1570s/1580s, pen and brown ink, 2020.93.1, Ruth and Jacob Kainen Memorial Acquisition Fund

Sowerby, John George, English, 1850–1914

- *The Kingfisher's Haunt*, c. 1890s, watercolor and gouache on paper laid down on board, 2020.92.2, William B. O'Neal Fund

Sturtevant, Elaine, American, 1924–2014

- *Stella Drawing*, 1969, ink, watercolor, 2019.165.4, Gift of Virginia Dwan
- *Study: Johns' 0–9*, 1965, watercolor, 2019.165.5, Gift of Virginia Dwan
- *Study for Lichtenstein Still Life*, 1988, graphite, colored pencil, 2019.165.6, Gift of Virginia Dwan
- *Johns & Oldenburg*, 1965, graphite, 2019.165.7, Gift of Virginia Dwan

Takashima, Susumu, Japanese, born 1959

- *One-A*, 2011, silverpoint, 2019.156.3, Gift of Christopher and Beverly With in memory of Karl and Gerda With

Vos, Maarten de, Flemish, 1532–1603

- *America*, c. 1585, pen and brown ink, incised for transfer, 2019.172.1, Gift of Thomas A. Cox

Warshaw, Howard, American, 1920–1977

- *Study for “The Odyssey”*, 1963, pen and ink, 2019.156.4, Gift of Christopher and Beverly With in memory of Karl and Gerda With



María Berrío, *A Sunburst Restrained*, 2019, collage with Japanese paper and watercolor on canvas, Gift of Erika and John Toussaint, 2020.2.1

## Paintings

Berrío, María, Colombian, born 1982

- *A Sunburst Restrained*, 2019, collage with Japanese paper and watercolor on canvas, 2020.2.1, Gift of Erika and John Toussaint

Everdingen, Allart van, Dutch, 1621–1675

- *Waterfall with Log Cabins*, c. 1665/1670, oil on canvas, 2018.210.1, Gift of Asbjorn R. Lunde

Girodet de Roussy-Trioson, Anne-Louis, French, 1767–1824

- *Coriolanus Taking Leave of his Family*, 1786, oil on canvas, 2019.169.1, New Century Fund, Gift of Edwin L. Cox—Ed Cox Foundation, and Chester Dale Fund

Hals, Dirck, Dutch, 1591–1656

- *Merry Company on a Terrace*, 1625, oil on panel, 2020.11.1, The Lee and Juliet Folger Fund

Heizer, Michael, American, born 1944

- *Actual Size: Empty Film Boxes*, 1983, photo-offset, pencil, spray paint, and crayon on zinc plate, 2018.190.4, Gift of Virginia Dwan
- *Actual Size: Empty Containers*, c. 1980, photo-offset, pencil, spray paint, and crayon on zinc plate, 2018.190.5, Gift of Virginia Dwan

Jackson, Oliver Lee, American, born 1935

- *Triptych (3.20.15, 5.21.15, 6.8.15)*, 2015, applied felt, chalk, alkyd paint, and mixed media on wood panel, 2019.143.1, Purchased with funds from the Glenstone Foundation

Klein, Carla, Dutch, born 1970

- *Untitled*, 2005, oil on canvas, 2019.148.1, Purchased with funds from the Frauke de Looper Trust

Manders, Mark, Dutch, born 1968

- *Composition with Yellow*, 2018, acrylic and off-set print on paper, wood, 2019.148.2, Purchased with funds from the Frauke de Looper Trust

Michallon, Achille-Etna, French, 1796–1822

- *The Forum at Pompeii*, 1819, oil on paper, 2020.15.1, Gift of the Matthiesen Gallery and John Lishawa Ltd. in memory of E. A. Carmean Jr. (1945–2019) and Philip Conisbee (1946–2008), both curators at the National Gallery of Art

Raysse, Martial, French, born 1936

- *C'est Moi*, 1964, transfer, paint, and sunglasses on canvas, 2019.165.1, Gift of Virginia Dwan

Rysselberghe, Théo van, Belgian, 1862–1926

- *Denise Maréchal*, c. 1894, oil on wood, 2019.118.1, Chester Dale Fund

Shaver, Nancy, American, born 1946

- *Georgiana, Shirley, and Sharon*, 2011, wooden blocks, fabric, paper, Flashe acrylic paint, and house paint, 2020.19.1, Gift of Elizabeth Kessenides

Smith, Jaune Quick-to-See, Enrolled Salish, member of the Confederated Salish and Kootenai Nation, Montana, born 1940

- *I See Red: Target*, 1992, mixed media on canvas, 2020.6.1, Purchased with funds from Emily and Mitchell Rales

Snyders, Frans, Flemish, 1579–1657

- *Still Life with Flowers, Grapes, and Small Game Birds*, c. 1615, oil on panel, 2020.14.1, Gift of Mr. and Mrs. John E. Pflieger

Wood, Jonas, American, born 1977

- *Helen's Room*, 2017, oil and acrylic on canvas, 2020.13.1, Purchased as the Gift of Stuart Barr, Sarah MacKey, and TSL, a Private Asian Collector



Lillian Bassman, *Translucent Hat*, c. 1950, gelatin silver print, Renee Harbers Liddell Fund and Alfred H. Moses and Fern M. Schad Fund, 2020.1.1

## Photographs

Abbott, Berenice, American, 1898–1991

- *James Joyce*, 1928, gelatin silver print, 2020.65.1, Diana and Mallory Walker Fund

Abergil, Inbal, Israeli, born 1976

- *N. O. K. - Next of Kin*, 2014–2017, portfolio of 18 chromogenic prints, 2019.181.1, Gift of Margaret and Gary M. Reiner

Adams, Ansel, American, 1902–1984

- *Half Dome and Moon, Yosemite Valley*, 1960, gelatin silver print, 2020.29.45, Gift of Stephen G. Stein

- *Mount Williamson, Sierra Nevada, from Manzanar, California*, 1944, printed 1960s, gelatin silver print, 2020.29.46, Gift of Stephen G. Stein
- *Boards and Thistles*, 1932, gelatin silver print, 2020.29.84, Gift of Stephen G. Stein

Adams, Robert, American, born 1937

- *Larimer County, Colorado*, 1977, gelatin silver print, 2019.174.1, Gift of Jeffrey Fraenkel and Alan Mark
- *Clearcut. Clatsop County, Oregon*, 2015, gelatin silver print, 2020.29.1, Gift of Stephen G. Stein
- *The River's Edge*, 2015, gelatin silver print, 2020.29.2, Gift of Stephen G. Stein
- *The River's Edge*, 2015, gelatin silver print, 2020.29.3, Gift of Stephen G. Stein
- *The River's Edge*, 2015, gelatin silver print, 2020.29.4, Gift of Stephen G. Stein
- *The River's Edge*, 2015, gelatin silver print, 2020.29.5, Gift of Stephen G. Stein
- *The River's Edge*, 2015, gelatin silver print, 2020.29.6, Gift of Stephen G. Stein
- *The River's Edge*, 2015, gelatin silver print, 2020.29.7, Gift of Stephen G. Stein
- *The River's Edge*, 2015, gelatin silver print, 2020.29.8, Gift of Stephen G. Stein

- *The River's Edge*, 2015, gelatin silver print, 2020.29.9, Gift of Stephen G. Stein
- *The River's Edge*, 2015, gelatin silver print, 2020.29.10, Gift of Stephen G. Stein
- *The River's Edge*, 2015, gelatin silver print, 2020.29.11, Gift of Stephen G. Stein
- *The River's Edge*, 2015, gelatin silver print, 2020.29.12, Gift of Stephen G. Stein
- *The River's Edge*, 2015, gelatin silver print, 2020.29.13, Gift of Stephen G. Stein
- *The Interior of the Spit*, 2015, gelatin silver print, 2020.29.14, Gift of Stephen G. Stein
- *The Interior of the Spit*, 2015, gelatin silver print, 2020.29.15, Gift of Stephen G. Stein
- *The Interior of the Spit*, 2015, gelatin silver print, 2020.29.16, Gift of Stephen G. Stein
- *The Interior of the Spit*, 2015, gelatin silver print, 2020.29.17, Gift of Stephen G. Stein
- *The Interior of the Spit*, 2015, gelatin silver print, 2020.29.18, Gift of Stephen G. Stein
- *The Interior of the Spit*, 2015, gelatin silver print, 2020.29.19, Gift of Stephen G. Stein
- *The Interior of the Spit*, 2015, gelatin silver print, 2020.29.20, Gift of Stephen G. Stein
- *The Interior of the Spit*, 2015, gelatin silver print, 2020.29.21, Gift of Stephen G. Stein

- *The Sea Beach*, 2015, gelatin silver print, 2020.29.22, Gift of Stephen G. Stein
- *The Sea Beach*, 2015, gelatin silver print, 2020.29.23, Gift of Stephen G. Stein
- *The Sea Beach*, 2015, gelatin silver print, 2020.29.24, Gift of Stephen G. Stein
- *The Sea Beach*, 2015, gelatin silver print, 2020.29.25, Gift of Stephen G. Stein
- *The Sea Beach*, 2015, gelatin silver print, 2020.29.26, Gift of Stephen G. Stein
- *The Sea Beach*, 2015, gelatin silver print, 2020.29.27, Gift of Stephen G. Stein
- *The Sea Beach*, 2015, gelatin silver print, 2020.29.28, Gift of Stephen G. Stein
- *The Sea Beach*, 2015, gelatin silver print, 2020.29.29, Gift of Stephen G. Stein
- *The Sea Beach*, 2015, gelatin silver print, 2020.29.30, Gift of Stephen G. Stein
- *The Sea Beach, Albatross*, 2015, gelatin silver print, 2020.29.31, Gift of Stephen G. Stein
- *The Sea Beach*, 2015, gelatin silver print, 2020.29.32, Gift of Stephen G. Stein
- *The Sea Beach*, 2015, gelatin silver print, 2020.29.33, Gift of Stephen G. Stein
- *The Sea Beach*, 2015, gelatin silver print, 2020.29.34, Gift of Stephen G. Stein

- *The Sea Beach*, 2015, gelatin silver print, 2020.29.35, Gift of Stephen G. Stein
- *The Sea Beach*, 2015, gelatin silver print, 2020.29.36, Gift of Stephen G. Stein
- *The Sea Beach*, 2015, gelatin silver print, 2020.29.37, Gift of Stephen G. Stein
- *The Sea Beach*, 2015, gelatin silver print, 2020.29.38, Gift of Stephen G. Stein
- *The Sea Beach*, 2015, gelatin silver print, 2020.29.39, Gift of Stephen G. Stein
- *The Sea Beach*, 2015, gelatin silver print, 2020.29.40, Gift of Stephen G. Stein
- *The Sea Beach*, 2015, gelatin silver print, 2020.29.41, Gift of Stephen G. Stein
- *The Sea Beach*, 2015, gelatin silver print, 2020.29.42, Gift of Stephen G. Stein
- *The Sea Beach*, 2015, gelatin silver print, 2020.29.43, Gift of Stephen G. Stein
- *Eden, Colorado*, 1968–1969, gelatin silver print, 2020.29.47, Gift of Stephen G. Stein
- *Eden, Colorado*, 1968–1969, gelatin silver print, 2020.29.48, Gift of Stephen G. Stein
- *Eden, Colorado*, 1968–1969, gelatin silver print, 2020.29.49, Gift of Stephen G. Stein

Altobelli, Gioacchino, Italian, c. 1820–c. 1879

- *The Tiber by the Castel Sant'Angelo*, c. 1870, albumen print, 2019.188.2, Gift of Lynne and Joseph Horning

American 20th Century

- *Untitled (Three girls)*, 1930s–1940s, gelatin silver print, 2019.170.10, Gift of Mary and Dan Solomon
- *Untitled (Two girls with a bicycle)*, 1950s–1960s, gelatin silver print, 2019.170.11, Gift of Mary and Dan Solomon
- *Untitled (Woman)*, n.d., gelatin silver print, 2019.170.12, Gift of Mary and Dan Solomon
- *Untitled (Three men wearing hats)*, 1940s, gelatin silver print, 2019.170.13, Gift of Mary and Dan Solomon
- *Untitled (Family in front of car)*, 1950s–1960s, gelatin silver print, 2019.170.14, Gift of Mary and Dan Solomon
- *Untitled (Family in San Francisco)*, c. 1970, gelatin silver print, 2019.170.15, Gift of Mary and Dan Solomon
- *“Barbara Standing by Cake at Her Party. Taken April 1963”*, 1963, gelatin silver print, 2019.170.16, Gift of Mary and Dan Solomon
- *Untitled (Boy sitting with birthday cake)*, June 1959, gelatin silver print, 2019.170.17, Gift of Mary and Dan Solomon

- *Untitled (Woman)*, 1970s, gelatin silver print, 2019.170.18, Gift of Mary and Dan Solomon
- *Untitled (Girl holding two dogs)*, n.d., gelatin silver print, 2019.170.19, Gift of Mary and Dan Solomon
- *Untitled (Three sailors at Naval Training Center, San Diego)*, c. 1942, gelatin silver print, 2019.170.20, Gift of Mary and Dan Solomon
- *Untitled (Two women harvesting cotton)*, n.d., gelatin silver print, 2019.170.21, Gift of Mary and Dan Solomon
- *Untitled (Two women)*, n.d., gelatin silver print, 2019.170.23, Gift of Mary and Dan Solomon
- *“Stark-Thomas-Carter”*, late 1960s, gelatin silver print, 2019.170.24, Gift of Mary and Dan Solomon
- *Untitled (Two women holding children)*, 1950s, gelatin silver print, 2019.170.25, Gift of Mary and Dan Solomon
- *Untitled (Three young women holding hats)*, 1950s, gelatin silver print, 2019.170.26, Gift of Mary and Dan Solomon
- *Untitled (Two women sitting in living room)*, n.d., gelatin silver print, 2019.170.27, Gift of Mary and Dan Solomon
- *Untitled (Woman standing in front of sign)*, n.d., gelatin silver print, 2019.170.28, Gift of Mary and Dan Solomon

- *Untitled (Birthday party)*, n.d., gelatin silver print, 2019.170.29, Gift of Mary and Dan Solomon
- *Untitled (Three children)*, c. 1965, gelatin silver print, 2019.170.30, Gift of Mary and Dan Solomon
- *Untitled (Three seated men)*, November 1960, diffusion transfer print (Polaroid), 2019.170.31, Gift of Mary and Dan Solomon
- *Untitled (Woman and child)*, c. 1940s, gelatin silver print, 2019.170.32, Gift of Mary and Dan Solomon
- *Untitled (Man and baby)*, n.d., gelatin silver print, 2019.170.33, Gift of Mary and Dan Solomon
- *Untitled (Man and woman eating)*, March 1959, gelatin silver print, 2019.170.34, Gift of Mary and Dan Solomon
- *Untitled (Woman cooking)*, May 1955, gelatin silver print, 2019.170.35, Gift of Mary and Dan Solomon
- *"Doris"*, c. 1944, gelatin silver print, 2019.170.36, Gift of Mary and Dan Solomon
- *Untitled (Two women posing in street)*, c. 1970, chromogenic print, 2019.170.37, Gift of Mary and Dan Solomon
- *Untitled (Family playing musical instruments)*, c. 1965, dye diffusion transfer print (Polacolor), 2019.170.38, Gift of Mary and Dan Solomon

- *Untitled (Woman and girl)*, n.d., gelatin silver print, 2019.170.39, Gift of Mary and Dan Solomon
- *Untitled (Three seated men)*, c. 1960s, gelatin silver print, 2019.170.40, Gift of Mary and Dan Solomon
- *Untitled (Newlyweds)*, n.d., gelatin silver print, 2019.170.41, Gift of Mary and Dan Solomon
- *Untitled (Family at Christmas)*, 1950s, gelatin silver print, 2019.170.42, Gift of Mary and Dan Solomon

Arbus, Diane, American, 1923–1971

- *Waitress, Nudist Camp, N.J.*, 1963, gelatin silver print, 2020.29.50, Gift of Stephen G. Stein
- *Woman with a Veil on Fifth Avenue, N.Y.C.*, 1968, gelatin silver print, 2020.29.85, Gift of Stephen G. Stein

Arnatt, Keith, British, 1930–2008

- *Pictures from a Rubbish Tip*, 1988–1989, chromogenic print, 2019.155.1, Pepita Milmore Memorial Fund
- *Pictures from a Rubbish Tip*, 1988–1989, chromogenic print, 2019.155.2, Pepita Milmore Memorial Fund

Atget, Eugène, French, 1857–1927

- *St. Cloud*, 1904, albumen print, 2020.29.86, Gift of Stephen G. Stein

- *Cour du Dragon*, 1905, albumen print, 2020.29.87, Gift of Stephen G. Stein
- *St. Étienne du Mont, rue de la Montagne Sainte Geneviève*, 1898, albumen print, 2020.29.88, Gift of Stephen G. Stein

Baltz, Lewis, American, 1945–2014

- *89/91 Sites of Technology*, 1989–1991, printed 2006, portfolio of 53 chromogenic prints, 2020.29.107.1–53, Gift of Stephen G. Stein

Bassman, Lillian, American, 1917–2012

- *Translucent Hat*, c. 1950, gelatin silver print, 2020.1.1, Renee Harbers Liddell Fund and Alfred H. Moses and Fern M. Schad Fund
- *Carmen (published in "Summer Symphonies—The Listeners," Harper's Bazaar, June 1952)*, 1952, gelatin silver print, 2020.1.2, Alfred H. Moses and Fern M. Schad Fund

Beard, Richard, British, 1801–1885

- *Portrait of a Boy*, c. 1850, daguerreotype with applied color, 2020.61.1, Clinton and Jean Wright Fund

Belloc, Auguste, French, 1800–1867

- *Nude Study*, c. 1855, albumen print, 2020.30.1, Robert Menschel and the Vital Projects Fund

Bing, Ilse, American, born Germany, 1899–1998

- *Ballet “L’Errante,” Paris, 1933*, gelatin silver print, 2019.175.1, Gift of Michael Mattis and Judith Hochberg
- *Ballet “L’Errante,” Paris, 1933*, gelatin silver print, 2020.33.1, Pepita Milmore Memorial Fund
- *Ballet “L’Errante,” Paris, 1933*, gelatin silver print, 2020.33.2, Pepita Milmore Memorial Fund

Bodine, A. Aubrey, American, 1906–1970

- *Ship in Baltimore Harbor, 1955*, gelatin silver print, 2020.29.51, Gift of Stephen G. Stein

Boghosian, Varujan, American, 1926–2020

- *Untitled, 2019*, collage of photomechanical prints, 2019.176.1, Gift of John Wilmerding

Brady, Mathew B., American, 1822–1896

- *Views in the Navy Ordnance Yard, Washington, D.C., June, 1866*, albumen print, 2020.51.1, Robert Menschel and the Vital Projects Fund

Brigman, Anne W., American, 1869–1950

- *The Dying Cedar, c. 1907*, gelatin silver print, 2020.29.52, Gift of Stephen G. Stein

Brodovitch, Alexey, American, born Russia, 1898–1971

- *Ballet (Le Tricorne), 1935–1937*, gelatin silver print, 2020.29.89, Gift of Stephen G. Stein

- *Ballet (Septième Symphonie), 1935–1937*, gelatin silver print, 2020.29.90, Gift of Stephen G. Stein

- *Ballet (Boutique Fantastique), 1935–1937*, gelatin silver print, 2020.29.91, Gift of Stephen G. Stein

Brooks, Charlotte Finkelstein, American, 1918–2014

- *Untitled, c. 1945*, gelatin silver print, 2020.68.3, Alfred H. Moses and Fern M. Schad Fund

Buble, Esther, American, 1921–1998

- *Children at Church, Washington, DC, 1942*, gelatin silver print, 2019.183.1, Gift of Timothy and Suzanne Hyde

- *Waiting Room Scene, 1950*, gelatin silver print, 2019.183.2, Gift of Timothy and Suzanne Hyde

Burtynsky, Edward, Canadian, born 1955

- *Shipbreaking #13, Chittagong, Bangladesh, 2000*, chromogenic print, 2020.29.53, Gift of Stephen G. Stein
- *Mines #13, Inco-Abandoned Mine Shaft, Crean Hill Mine, Sudbury, Ontario, 1984*, printed 2004, chromogenic print, 2020.29.54, Gift of Stephen G. Stein

Cabanas, Carla, Portuguese, born 1979

- *I Don’t Trust Myself When I’m Sleeping, 2019*, chromogenic print, 2020.60.1, Shlenker Block Fund and Joseph M. Cohen Family Collection Fund

- *I Don’t Trust Myself When I’m Sleeping, 2019*, chromogenic print, 2020.60.2, Shlenker Block Fund and Joseph M. Cohen Family Collection Fund

- *I Don’t Trust Myself When I’m Sleeping, 2019*, 2 chromogenic prints, 2020.60.3, Shlenker Block Fund and Joseph M. Cohen Family Collection Fund

- *I Don’t Trust Myself When I’m Sleeping, 2019*, chromogenic print, 2020.60.4, Shlenker Block Fund and Joseph M. Cohen Family Collection Fund

Cadmus, Paul, American, 1904–1999

- *Jared French, Fire Island, 1942*, gelatin silver print, 2020.8.3, Pepita Milmore Memorial Fund

Callahan, Harry, American, 1912–1999

- *Dearborn Street, 1948*, gelatin silver print, 2020.29.92, Gift of Stephen G. Stein

Cameron, Julia Margaret, British, 1815–1879

- *Sir Leslie Stephen, c. 1872*, albumen print, 2019.158.1, Gift of Leslie, Judith, and Gabrielle Schreyer

Cuccioni, Tommaso, Italian, 1790–1864

- *Forum Romanum, c. 1860*, albumen print, 2019.188.1, Gift of Lynne and Joseph Horning
- *Forum Romanum, c. 1858*, albumen print, 2019.188.4, Gift of Lynne and Joseph Horning

Cunningham, Imogen, American, 1883–1976

- *Dudleya Ingans*, 1933, printed 1949, gelatin silver print, 2020.29.55, Gift of Stephen G. Stein

Curtis, Edward Sheriff, American, 1868–1952

- *The Vanishing Race*, 1904, Orotone print, 2020.29.56, Gift of Stephen G. Stein

Dahl-Wolfe, Louise, American, 1895–1989

- *William Edmondson*, 1933, gelatin silver print, 2020.8.1, Purchased as the Gift of the Gallery Girls
- *New Mexico*, c. 1939, gelatin silver print, 2020.68.1, Alfred H. Moses and Fern M. Schad Fund

Demachy, Robert, French, 1859–1937

- *Cranes*, c. 1900, gum dichromate print, 2020.72.1, Pepita Milmore Memorial Fund

Demand, Thomas, German, born 1964

- *Embassy I*, 2007, chromogenic print, 2019.167.1, Gift of the Tony Podesta Collection in honor of Earl A. Powell III, Director of the National Gallery of Art (1992–2019)
- *Embassy II*, 2007, chromogenic print, 2019.167.2, Gift of the Tony Podesta Collection in honor of Earl A. Powell III, Director of the National Gallery of Art (1992–2019)

- *Embassy III*, 2007, chromogenic print, 2019.167.3, Gift of the Tony Podesta Collection in honor of Earl A. Powell III, Director of the National Gallery of Art (1992–2019)

- *Embassy IV*, 2007, chromogenic print, 2019.167.4, Gift of the Tony Podesta Collection in honor of Earl A. Powell III, Director of the National Gallery of Art (1992–2019)

- *Embassy IVa*, 2007, chromogenic print, 2019.167.5, Gift of the Tony Podesta Collection in honor of Earl A. Powell III, Director of the National Gallery of Art (1992–2019)

- *Embassy V*, 2007, chromogenic print, 2019.167.6, Gift of the Tony Podesta Collection in honor of Earl A. Powell III, Director of the National Gallery of Art (1992–2019)

- *Embassy VI*, 2007, chromogenic print, 2019.167.7, Gift of the Tony Podesta Collection in honor of Earl A. Powell III, Director of the National Gallery of Art (1992–2019)

- *Embassy VII*, 2007, chromogenic print, 2019.167.8, Gift of the Tony Podesta Collection in honor of Earl A. Powell III, Director of the National Gallery of Art (1992–2019)

- *Embassy VIIa*, 2007, chromogenic print, 2019.167.9, Gift of the Tony Podesta Collection in honor of Earl A. Powell III, Director of the National Gallery of Art (1992–2019)

Donaghy, Don, American, 1936–2008

- *Near Salt Lake City, Utah*, 1968, gelatin silver print, 2020.29.57, Gift of Stephen G. Stein

Draper, Louis, American, 1935–2002

- *Lincoln Center*, 1961, printed c. 1970s, gelatin silver print, 2020.70.1, Alfred H. Moses and Fern M. Schad Fund
  - *Summer, New York City*, 1961, printed c. 1970s, gelatin silver print, 2020.70.2, Alfred H. Moses and Fern M. Schad Fund
  - *Untitled (Playground)*, 1960s, gelatin silver print, 2020.70.3, Alfred H. Moses and Fern M. Schad Fund
  - *Fannie Lou Hamer, Mississippi*, July 1971, gelatin silver print, 2020.71.1, Alfred H. Moses and Fern M. Schad Fund
  - *Graffiti Wall, New York*, c. 1965, gelatin silver print, 2020.71.2, Alfred H. Moses and Fern M. Schad Fund
  - *Untitled*, 1959–1960, gelatin silver print, 2020.71.3, Alfred H. Moses and Fern M. Schad Fund
- Ebstel, Jeanne, American, born England, 1905–2000
- *Untitled*, c. 1945, gelatin silver print, 2020.68.2, Alfred H. Moses and Fern M. Schad Fund



- *Untitled*, c. 1945, gelatin silver print, 2020.68.4, Alfred H. Moses and Fern M. Schad Fund

Edmonds, John, American, born 1989

- *Untitled (Hood 1)*, 2016, inkjet print, 2019.163.1, Gift of Larissa Leclair
- *Untitled (Hood 6)*, 2018, inkjet print, 2020.10.1, Charina Endowment Fund

Eggleston, William, American, born 1939

- *Sumner, Mississippi, Cassidy Bayou in the Background*, c. 1972, printed 1986, dye imbibition print, 2020.29.58, Gift of Stephen G. Stein
- *Tallahatchie County, Mississippi*, c. 1972, printed 1986, dye imbibition print, 2020.29.93, Gift of Stephen G. Stein

Evans, Walker, American, 1903–1975

- *Country Store and Gas Station*, 1936, gelatin silver print, 2020.29.59, Gift of Stephen G. Stein
- *Robert Frank's Stove, Nova Scotia*, 1971, gelatin silver print, 2020.29.94, Gift of Stephen G. Stein

Faurer, Louis, American, 1916–2001

- *New York, New York*, c. 1946, gelatin silver print, 2020.29.60, Gift of Stephen G. Stein
- *52nd Street Pier Looking Towards the United Nations Building, New York, New York*, 1947, printed 1980s, gelatin silver print, 2020.29.61, Gift of Stephen G. Stein

- *Robert and Mary Frank at San Gennaro Festival, New York City*, 1950, printed 1980s, gelatin silver print, 2020.29.62, Gift of Stephen G. Stein

Flick, Robbert, American, born Netherlands, 1939

- *SV013/80, Inglewood, Centinela Park from Florence Boulevard*, 1980, contact sheet, 2019.184.7, Gift of Stephen and Claudine Ostrow
- *78119-12A*, December 1978, gelatin silver print, 2019.184.8, Gift of Stephen and Claudine Ostrow

Frank, Robert, American, born Switzerland, 1924–2019

- *Untitled (Woman)*, 1958, gelatin silver print, 2019.182.1, Gift of Robert and Elizabeth Kellogg
- *Untitled (Two Men)*, 1958, gelatin silver print, 2019.182.2, Gift of Robert and Elizabeth Kellogg
- *Untitled (Man and Woman)*, 1958, gelatin silver print, 2019.182.3, Gift of Robert and Elizabeth Kellogg
- *Mary*, 1953, printed 1970s, gelatin silver print, 2020.29.95, Gift of Stephen G. Stein

Friedlander, Lee, American, born 1934

- *New York City*, 1963, gelatin silver print, 2020.29.63, Gift of Stephen G. Stein
- *Texas*, 1965, printed 1970s, gelatin silver print, 2020.29.64, Gift of Stephen G. Stein

- *Las Vegas*, 1970, printed 1980s, gelatin silver print, 2020.29.65, Gift of Stephen G. Stein

- *Canton, Ohio*, 1980, gelatin silver print, 2020.29.66, Gift of Stephen G. Stein

- *New Orleans*, 1968, printed 1970s, gelatin silver print, 2020.29.67, Gift of Stephen G. Stein

Gossage, John, American, born 1946

- *Guatemala*, 2006, gelatin silver print, 2020.29.68, Gift of Stephen G. Stein

Gowin, Emmet, American, born 1941

- *Agricultural Pivots on the Snake River Plain Near the Confluence of the Snake & Columbia Rivers, Washington*, 1991, gelatin silver print, 2020.29.69, Gift of Stephen G. Stein

Graham, Paul, British, born 1956

- *Little Chef in Rain, St. Neots, Cambridgeshire*, May 1982, chromogenic print, 2020.41.1, Alfred H. Moses and Fern M. Schad Fund
- *Café Assistants, Compass Café, Colsterworth, Lincolnshire*, November 1982, chromogenic print, 2020.41.2, Alfred H. Moses and Fern M. Schad Fund

Gregory, Ronald J., American, 1953–2019

- *Test Target Display*, 1987, laser disc, 2020.27.1, Gift of Constance McCabe

Grossman, Sid, American, 1913–1955

- *Mulberry Street Shrine, San Gennaro Festival, New York City*, 1948, gelatin silver print, 2020.29.70, Gift of Stephen G. Stein
- *Coney Island*, 1947, gelatin silver print, 2020.29.71, Gift of Stephen G. Stein
- *Mulberry Street, San Gennaro Festival, New York City*, 1948, gelatin silver print, 2020.29.72, Gift of Stephen G. Stein
- *Aguadulce, Panama*, 1940s, gelatin silver print, 2020.29.73, Gift of Stephen G. Stein

Haacke, Hans, German, born 1936

- *Mission Accomplished*, 2004–2005, inkjet print, 2019.168.1.1, Gift in memory of Herman Ostrow M.D.
- *Mission Accomplished*, 2004–2005, inkjet print, 2019.168.1.2, Gift in memory of Herman Ostrow M.D.

Hiller, Susan, American, 1940–2019

- *10 Months*, 1977–1979, 10 gelatin silver prints and 10 text panels, 2020.76.1.1–20, Gift of the Collectors Committee, Alfred H. Moses and Fern M. Schad Fund, Gregory and Aline Gooding, and David Knaus Fund

Hutton, Kurt, German, 1893–1960

- *Care Free*, 1938, gelatin silver print, 2020.39.1, Robert Menschel and the Vital Projects Fund

Jacobi, Lotte, American, born Germany, 1896–1990

- *Untitled (Photogenic)*, 1946–1955, gelatin silver print, 2020.52.1, R. K. Mellon Family Foundation

Käsebier, Gertrude, American, 1852–1934

- *Chester Beach*, c. 1910, platinum print, 2020.8.2, Pepita Milmore Memorial Fund

Keene, Minna, Canadian, born Germany 1861–1943

- *Portrait of Zulu Woman and Child*, c. 1906, carbon print, 2020.53.1, R. K. Mellon Family Foundation

Kertész, André, American, born Hungary, 1894–1985

- *Buy Bud*, 1962, gelatin silver print, 2020.29.74, Gift of Stephen G. Stein
- *Water Tower*, 1962, gelatin silver print, 2020.29.96, Gift of Stephen G. Stein

Kilburn, William Edward, British, 1818–1891

- *Portrait of a Girl*, c. 1852, daguerreotype, 2020.61.2, Clinton and Jean Wright Fund

Klein, William, American, born 1928

- *New York 54/55*, 1954–1955, portfolio of 12 gelatin silver prints, 2019.180.2, Gift of Robert B. Menschel

le Morvan, Charles, French, 1865–1933

- *Carte photographique et systématique de la lune (Photographic and Systematic Chart of the Moon)*, 1902–1907, published 1926, 6 photogravures and text booklet, 2019.177.1, Gift of Mary and Dan Solomon

Levenstein, Leon, American, 1910–1988

- *Handball Players, Houston Street, New York*, c. 1969, gelatin silver print, 2020.29.97, Gift of Stephen G. Stein

Levitt, Helen, American, 1913–2009

- *New York*, c. 1945, gelatin silver print, 2020.29.75, Gift of Stephen G. Stein
- *New York*, c. 1938, gelatin silver print, 2020.29.98, Gift of Stephen G. Stein

Lynes, George Platt, American, 1907–1955

- *Nudes and Mattress*, 1941, gelatin silver print, 2019.162.1, Gift of Joseph Rodota
- *Jacques D'Amboise in "Filling Station"*, 1953, gelatin silver print, 2019.178.1, Gift of Christopher Read and Chris Vein

- *Tanaquil Le Clercq and Todd Bolender in “Metamorphoses”*, 1952, gelatin silver print, 2020.9.1, Pepita Milmore Memorial Fund

Marville, Charles, French, 1813–1879

- *Grotto, Mare aux Biches, Bois de Boulogne*, 1858–1860, albumen print, 2020.29.106, Gift of Stephen G. Stein

Mesdames Morter (Dorothy Morter and Reta Morter), British, active 1920–1930

- *Love-Self-Portrait, Reta May Morter*, 1923, gelatin silver print, 2020.66.1, Pepita Milmore Memorial Fund
- *Altum Silentium—Self-Portrait, Reta May Morter*, 1922, gelatin silver print, 2020.66.2, Pepita Milmore Memorial Fund

Model, Lissette, American, 1901–1983

- *Reflections, Fifth Avenue, New York*, 1939–1945, gelatin silver print, 2020.29.99, Gift of Stephen G. Stein

Morgan, Barbara, American, 1900–1992

- *Martha Graham, American Document (“Puritan Love Duet” with Erick Hawkins)*, 1938, gelatin silver print, 2020.4.1, R. K. Mellon Family Foundation

Mosse, Richard, Irish, born 1980

- *Incoming*, 2014–2017, three-channel digital video, color, sound, 52:12 minutes, 2019.116.1, Gift of the Collectors Committee and Robert B. Menschel Fund

Muybridge, Eadweard, American, born England, 1830–1904

- *Plate Number 213. Lifting and emptying basket*, 1887, collotype, 2019.131.1, Edward E. MacCrone Fund
- *Plate Number 219. Stooping, and lifting broom and sweeping*, 1887, collotype, 2019.131.2, Edward E. MacCrone Fund
- *Plate Number 220. Stooping, and lifting handkerchief and turning*, 1887, collotype, 2019.131.3, Edward E. MacCrone Fund
- *Plate Number 245. Two models, turning around, sitting on the ground*, 1887, collotype, 2019.131.4, Edward E. MacCrone Fund
- *Plate Number 408. Two models, 1 pouring bucket of water over 8*, 1887, collotype, 2019.131.5, Edward E. MacCrone Fund and New Century Fund
- *Plate Number 430. Toilet; taking off clothes*, 1887, collotype, 2019.131.6, New Century Fund
- *Plate Number 449. Feeding a dog*, 1887, collotype, 2019.131.7, New Century Fund

- *Plate Number 501. Miscellaneous,—stooping, kneeling, etc.*, 1887, collotype, 2019.131.8, New Century Fund

- *Plate Number 531. Various poses*, 1887, collotype, 2019.131.9, New Century Fund

- *Plate Number 661. Mule; A, B, a refractory animal, Ruth*, 1887, collotype, 2019.131.10, New Century Fund

- *Plate Number 710. Dog; galloping; white racing hound, Maggie*, 1887, collotype, 2019.131.11, New Century Fund

- *Plate Number 667. Ass; walking, saddle; a boy riding, Zoo*, 1887, collotype, 2019.140.1, Pepita Milmore Memorial Fund

- *Plate Number 668. Ass; ambling; irregular; saddle; a boy riding, Zoo*, 1887, collotype, 2019.140.2, Pepita Milmore Memorial Fund

- *Plate Number 672. Ox; trotting*, 1887, collotype, 2019.140.3, Pepita Milmore Memorial Fund

- *Plate Number 671. Ox; walking*, 1887, collotype, 2019.140.4, Pepita Milmore Memorial Fund

- *Plate Number 670. Ox; walking*, 1887, collotype, 2019.140.5, Pepita Milmore Memorial Fund

- *Plate Number 674. Sow; walking*, 1887, collotype, 2019.140.6, Pepita Milmore Memorial Fund

- *Plate Number 444. Two models shaking hands and kissing each other*, 1887, collotype, 2019.149.1, Pepita Milmore Memorial Fund

- *Plate Number 499. Raking and packing hay*, 1887, collotype, 2019.149.2, Pepita Milmore Memorial Fund
- *Plate Number 669. Ox; walking*, 1887, collotype, 2019.150.1, New Century Fund
- *Plate Number 676. Goat; walking*, 1887, collotype, 2019.150.2, Pepita Milmore Memorial Fund
- *Plate Number 673. Sow; walking*, 1887, collotype, 2019.150.3, William A. Clark Fund
- *Plate Number 677. Goat; walking, in sulky*, 1887, collotype, 2019.150.4, William A. Clark Fund
- *Plate Number 679. Goat; galloping*, 1887, collotype, 2019.150.5, William A. Clark Fund
- *Plate Number 706. Dog; trotting; mastiff, Smith*, 1887, collotype, 2019.150.6, William A. Clark Fund
- *Plate Number 713. Dog; turning around, etc.; setter, Kate*, 1887, collotype, 2019.150.7, William A. Clark Fund
- *Plate Number 714. Dog; aroused by a torpedo; mastiff, Smith*, 1887, collotype, 2019.150.8, William A. Clark Fund
- *Plate Number 716. Cat; walking; change to galloping*, 1887, collotype, 2019.150.9, William A. Clark Fund
- *Plate Number 718. Cat; trotting; change to galloping*, 1887, collotype, 2019.150.10, William A. Clark Fund

- *Plate Number 720. Cat; galloping*, 1887, collotype, 2019.150.11, William A. Clark Fund
- *Plate Number 665. Ass; walking; bareback; a boy riding, Jennie*, 1887, collotype, 2020.59.1, Robert B. Menschel and the Vital Projects Fund
- *Plate Number 705. Dog; trotting; mastiff, Dread*, 1887, collotype, 2020.59.2, Robert B. Menschel and the Vital Projects Fund
- *Plate Number 712. Dog; jumping hurdle; mastiff, Dread*, 1887, collotype, 2020.59.3, Robert B. Menschel and the Vital Projects Fund

Nixon, Nicholas, American, born 1947

- *The Brown Sisters, Brookline, Massachusetts*, 2019, gelatin silver print, 2020.56.1, Randi and Bob Fisher Fund

Penn, Irving, American, 1917–2009

- *Street Photographer (A), New York*, 1950, printed October 1976, platinum-palladium print, 2019.166.1, Gift of The Irving Penn Foundation, in Recognition of Constance McCabe's Achievements in Photograph Conservation

Perinchief, Violet Keene, Canadian, born England, 1893–1987

- *A Modern Miss*, 1940, gelatin silver print, 2020.69.1, Pepita Milmore Memorial Fund
- *The Arrogant*, 1935, gelatin silver print, 2020.69.2, Pepita Milmore Memorial Fund

- *Marionettes*, 1930, gelatin silver print, 2020.69.3, Pepita Milmore Memorial Fund
- *Serge Lifar, The Genius of the Dance*, 1935, gelatin silver print, 2020.69.4, Pepita Milmore Memorial Fund

Renard, François-Auguste, French, 1806–1890

- *Église Notre Dame—Côté sud*, 1852, salted paper print, 2020.55.1, Clinton and Jean Wright Fund

Rensler, William J., American, 1891–1946

- *"Mr. & Mrs..."*, n.d., gelatin silver print, 2019.170.22, Gift of Mary and Dan Solomon

Robbins, David, American, born 1957

- *Talent (Alan Belcher)*, 1986, gelatin silver print, 2019.171.1, 2019.171.1.1, Gift of Eileen and Michael Cohen
- *Talent (Jenny Holzer)*, 1986, gelatin silver print, 2019.171.2, 2019.171.2.1, Gift of Eileen and Michael Cohen
- *Talent (Michael Byron)*, 1986, gelatin silver print, 2019.171.3, 2019.171.3.1, Gift of Eileen and Michael Cohen
- *Talent (Larry Johnson)*, 1986, gelatin silver print, 2019.171.4, 2019.171.4.1, Gift of Eileen and Michael Cohen

- *Talent (Cindy Sherman)*, 1986, gelatin silver print, 2019.171.5, 2019.171.5.1, Gift of Eileen and Michael Cohen
- *Talent (Allan McCollum)*, 1986, gelatin silver print, 2019.171.6, 2019.171.6.1, Gift of Eileen and Michael Cohen
- *Talent (Joel Otterson)*, 1986, gelatin silver print, 2019.171.7, 2019.171.7.1, Gift of Eileen and Michael Cohen
- *Talent (Clegg & Guttman)*, 1986, gelatin silver print, 2019.171.8, 2019.171.8.1, Gift of Eileen and Michael Cohen
- *Talent (Steven Parrino)*, 1986, gelatin silver print, 2019.171.9, 2019.171.9.1, Gift of Eileen and Michael Cohen
- *Talent (Thomas Lawson)*, 1986, gelatin silver print, 2019.171.10, 2019.171.10.1, Gift of Eileen and Michael Cohen
- *Talent (Jeff Koons)*, 1986, gelatin silver print, 2019.171.11, 2019.171.11.1, Gift of Eileen and Michael Cohen
- *Talent (Gretchen Bender)*, 1986, gelatin silver print, 2019.171.12, 2019.171.12.1, Gift of Eileen and Michael Cohen
- *Talent (Robert Longo)*, 1986, gelatin silver print, 2019.171.13, 2019.171.13.1, Gift of Eileen and Michael Cohen

- *Talent (Robin Weglinski)*, 1986, gelatin silver print, 2019.171.14, 2019.171.14.1, Gift of Eileen and Michael Cohen
  - *Talent (Ashley Bickerton)*, 1986, gelatin silver print, 2019.171.15, 2019.171.15.1, Gift of Eileen and Michael Cohen
  - *Talent (Peter Nagy)*, 1986, gelatin silver print, 2019.171.16, 2019.171.16.1, Gift of Eileen and Michael Cohen
  - *Talent (Jennifer Bolande)*, 1986, gelatin silver print, 2019.171.17, 2019.171.17.1, Gift of Eileen and Michael Cohen
  - *Talent (David Robbins)*, 1986, gelatin silver print, 2019.171.18, 2019.171.18.1, Gift of Eileen and Michael Cohen
- Russell, Andrew Joseph, American, 1830–1902
- *Rebel Rifle Pits, Bull Run*, 1863, albumen print, 2020.29.44, Gift of Stephen G. Stein
- Ruwedel, Mark, American, born 1954
- *Chicago, Milwaukee, St. Paul and Pacific #30*, 2005, gelatin silver print, 2020.29.100, Gift of Stephen G. Stein
  - *San Diego and Arizona Eastern #9*, 2003, gelatin silver print, 2020.29.101, Gift of Stephen G. Stein
  - *Chicago, Milwaukee, St. Paul and Pacific #34 A*, 2005, gelatin silver print, 2020.29.102, Gift of Stephen G. Stein

- *Chicago, Milwaukee, St. Paul and Pacific #17*, 2004, gelatin silver print, 2020.29.103, Gift of Stephen G. Stein
- Simpson, Lorna, American, born 1960
- *Shoe Lover*, 1992, 3 dye diffusion transfer prints (Polacolor) and 2 plastic plaques, 2019.170.1.1–5, Gift of Mary and Dan Solomon
- Siskind, Aaron, American, 1903–1991
- *Volcano 103*, 1980, gelatin silver print, 2019.173.1, Gift of Ira M. Lowe
- Smith, Beuford, American, born 1941
- *Untitled*, c. 1965, gelatin silver print, 2020.34.1, Pepita Milmore Memorial Fund
- Smith, Ming, American, born 1947
- *Leaning Man with Jacket*, 1991, gelatin silver print, 2020.57.1, Alfred H. Moses and Fern M. Schad Fund
  - *House Castle on the Hill, Pittsburgh, Pennsylvania*, 1991, gelatin silver print, 2020.58.1, Alfred H. Moses and Fern M. Schad Fund
- Sommer, Frederick, American, born Italy, 1905–1999
- *Rocks (Utah)*, 1973, gelatin silver print, 2020.29.104, Gift of Stephen G. Stein

Soth, Alec, American, born 1969

- *Patrick, Palm Sunday, Baton Rouge, Louisiana*, 2002, chromogenic print, 2019.170.2, Gift of Mary and Dan Solomon
- *LBM DISPATCH # 1: OHIO (SPECIAL EDITION)*, 2012, photobook, 2019.170.3, Gift of Mary and Dan Solomon
- *LBM DISPATCH # 2: UPSTATE (SPECIAL EDITION)*, 2012, photobook, 2019.170.4, Gift of Mary and Dan Solomon
- *LBM DISPATCH # 3: MICHIGAN (SPECIAL EDITION)*, 2012, photobook, 2019.170.5, Gift of Mary and Dan Solomon
- *LBM DISPATCH # 4: THREE VALLEYS (SPECIAL EDITION)*, 2013, photobook, 2019.170.6, Gift of Mary and Dan Solomon
- *LBM DISPATCH # 5: COLORADO (SPECIAL EDITION)*, 2013, photobook, 2019.170.7, Gift of Mary and Dan Solomon
- *LBM DISPATCH # 6: TEXAS TRIANGLE (SPECIAL EDITION)*, 2013, photobook, 2019.170.8, Gift of Mary and Dan Solomon
- *LBM DISPATCH # 7: GEORGIA (SPECIAL EDITION)*, 2014, photobook, 2019.170.9, Gift of Mary and Dan Solomon
- *Holt Cemetery, New Orleans, Louisiana*, 2002, chromogenic print, 2020.29.76, Gift of Stephen G. Stein

- *The Farm, Angola State Prison, Louisiana*, 2002, chromogenic print, 2020.29.77, Gift of Stephen G. Stein

Thomas, Mickalene, American, born 1971

- *Melody: Back*, 2011, diffusion transfer print (Polaroid), 2020.31, Charina Endowment Fund and Peter Edwards and Rose Gutfeld Fund

Unknown 19th Century

- *St. Peter, Vatican*, c. 1880, carbon print, 2019.188.3, Gift of Lynne and Joseph Horning

Vanderpant, John, Canadian, born Netherlands, 1884–1939

- *Intimate Design (Cabbage)*, c. 1932, gelatin silver print, 2020.29.78, Gift of Stephen G. Stein

Van Der Zee, James, American, 1886–1983

- *Golden Glove Boxer*, c. 1954, gelatin silver print, 2019.127.1, Avalon Fund
- *Family Portrait*, c. 1940, gelatin silver print, 2019.127.2, Avalon Fund
- *Violinist*, c. 1956, gelatin silver print with applied color, 2019.127.3, Avalon Fund
- *Daisye*, 1931, gelatin silver print with applied color, 2019.127.4, Avalon Fund
- *The Avenue Fish Market*, 1938, gelatin silver print, 2019.127.5, Avalon Fund

- *Marcus Garvey with George O. Marke and Prince Kojo Tovalou-Houénou*, 1924, gelatin silver print, 2019.127.6, Avalon Fund

- *Portrait of Man and Dogs*, 1931, gelatin silver print, 2019.127.7, Avalon Fund

- *Altar Boy*, c. 1930, gelatin silver print, 2019.127.8, Avalon Fund

- *Harlem Store Front*, 1934, gelatin silver print, 2019.127.9, Avalon Fund

- *Portrait of Couple*, 1925, gelatin silver print, 2019.127.10, Avalon Fund

- *Mock Wedding*, c. 1930, gelatin silver print, 2019.127.11, Avalon Fund

- *Capital Grill Restaurant*, c. 1940, gelatin silver print, 2019.127.12, Avalon Fund

- *Soldier*, 1944, gelatin silver print, 2019.127.13, Avalon Fund

- *Little John*, 1934, gelatin silver print, 2019.127.14, Avalon Fund

- *Posing at the Beach*, c. 1925, gelatin silver print, 2019.127.15, Avalon Fund

- *Child in Casket*, 1929, gelatin silver print with applied color, 2019.127.16, Avalon Fund

- *Harlem Swimming Team*, 1925, gelatin silver print, 2019.127.17, Avalon Fund

- *Military Group*, 1926, gelatin silver print, 2019.127.18, Avalon Fund

- *Portrait of a Girl*, 1925, gelatin silver print, 2019.127.19, Avalon Fund
- *Portrait of a Woman*, 1914, gelatin silver print, 2019.127.20, Avalon Fund
- *Boxer's Stance #4*, 1950s, gelatin silver print, 2019.127.21, Avalon Fund

Vestal, David, American, 1924–2013

- *Empire State Building, from 133 W. 22nd Street, New York*, 1960, gelatin silver print, 2020.29.79, Gift of Stephen G. Stein

Vigier, Joseph, French, 1821–1894

- *Allée, Château de Frand-Vaux, Savigny sur Orge, the Family Home of Vigier*, c. 1855, salted paper print, 2020.29.105, Gift of Stephen G. Stein

Weiss, Sabine, French, born Switzerland, 1924

- *Le Facteur de Nuit (The Night Postman)*, c. 1950, gelatin silver print, 2020.67.1, Leslie, Judith and Gabrielle Schreyer Fund

Weston, Edward, American, 1886–1958

- *Surf, North Coast*, 1937, printed 1940–1945, gelatin silver print, 2020.29.80, Gift of Stephen G. Stein
- *Cypress, Pebble Beach*, 1932, gelatin silver print, 2020.29.81, Gift of Stephen G. Stein
- *Cypress Grove, Point Lobos*, 1940, gelatin silver print, 2020.29.82, Gift of Stephen G. Stein

White, Minor, American, 1908–1976

- *Jupiter Portfolio*, 1975, portfolio of 11 gelatin silver prints, 2019.180.1, Gift of Robert B. Menschel

Whiting Fellows, Caroline, American, 1905–1989

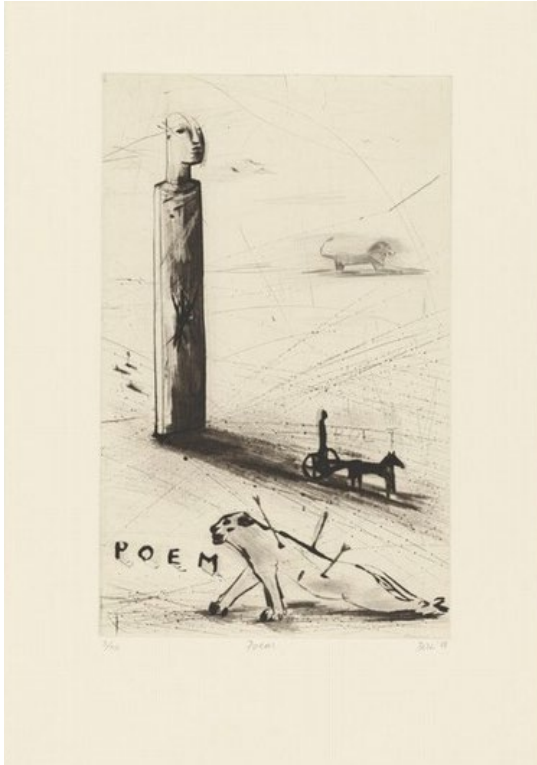
- *Untitled*, 1930s, dye imbibition print, 2019.157.1, Gift of Isabell VanMerlin
- *Untitled*, 1930s, dye imbibition print, 2019.157.2, Gift of Isabell VanMerlin
- *Untitled*, 1930s, dye imbibition print, 2019.157.3, Gift of Isabell VanMerlin
- *Untitled*, 1930s, gelatin silver print, 2019.157.4, Gift of Isabell VanMerlin
- *Untitled*, 1930s, gelatin silver print, 2019.157.5, Gift of Isabell VanMerlin
- *Untitled*, 1930s, dye imbibition print, 2019.157.6, Gift of Isabell VanMerlin
- *Untitled*, 1930s, dye imbibition print, 2019.157.7, Gift of Isabell VanMerlin
- *Untitled*, 1930s, dye imbibition print, 2019.157.8, Gift of Isabell VanMerlin
- *Untitled*, 1930s, dye imbibition print, 2019.157.9, Gift of Isabell VanMerlin

Worden, Willard E., American, 1868–1946

- *View of San Francisco from Fort Baker*, 1910, gelatin silver print, 2020.29.83, Gift of Stephen G. Stein

Zhitomirsky, Alexander, Russian, 1907–1993

- *Interior of Honeymoon Album Cover*, 1931, collage of gelatin silver prints, 2020.54.1, Pepita Milmore Memorial Fund



Deborah Bell, *Poem*, 2008, drypoint in black on Somerset wove paper, Gift of Christopher and Beverly With in memory of Karl and Gerda With, 2019.156.5

## Prints and Illustrated Books

Alberti, Cherubino, Italian, 1553–1615

- *Study for a Warrior*, 1590, engraving, 2020.82.1, Ruth and Jacob Kainen Memorial Acquisition Fund

- *Nuda Veritas or St. John the Baptist (after Michelangelo)*, 1591, engraving, 2020.82.3, Ruth and Jacob Kainen Memorial Acquisition Fund

Amos, Emma, American, 1937–2020

- *Gold Face Type*, 1966, color screenprint, 2019.164.2, Gift of the Collectors Committee
- *Pool Lady*, 1980, etching, aquatint and stencil, 2019.164.3, Gift of the Collectors Committee
- *Crown*, 2002, etching and carborundum, 2019.164.4, Gift of the Collectors Committee
- *Target*, 1992, color etching and phototransfer chine collé, 2019.164.5, Gift of the Collectors Committee

Bauer, Marius Alexander Jacques, Dutch, 1867–1932

- *Amiens Cathedral*, 1890, etching, 2020.32.3, Ailsa Mellon Bruce Fund

Beatrizet, Nicolas, French, 1515–1565 or after

- *The Death of Meleager (after Francesco Salviati)*, 1543, engraving, 2019.132.1, Ruth and Jacob Kainen Memorial Acquisition Fund

Beccafumi, Domenico, Italian, c. 1485–1551

- *The Metals Fleeing from Vulcan*, 1530/1535, woodcut, 2020.82.4, Ruth and Jacob Kainen Memorial Acquisition Fund

Beich, Joachim Franz, German, 1665–1748

- *The Angler*, c. 1700/1725, etching, 2019.161.1, Gift of C. G. Boerner LLC
- *The Round Tower*, c. 1700/1725, etching, 2019.161.2, Gift of C. G. Boerner LLC

Bell, Deborah, South African, born 1957

- *Poem*, 2008, drypoint, 2019.156.5, Gift of Christopher and Beverly With in memory of Karl and Gerda With
- *Nature Morte*, 2008, drypoint, 2019.156.6, Gift of Christopher and Beverly With in memory of Karl and Gerda With

Blees, Joseph Hubert, Dutch, 1826–1907

- *Mountainous Landscape with a Brook (after Johann Bernard Klombeck)*, 1864, etching, 2020.36.2, Ruth and Jacob Kainen Memorial Acquisition Fund

Boccioni, Umberto, Italian, 1882–1916

- *Lake with Swans*, 1908, etching, inked à la poupée, 2020.48.2, Purchased for the Virginia and Ira Jackson Collection
- *Self-Portrait with Four Other Studies*, 1907/1909, drypoint, 2020.90.2, Ailsa Mellon Bruce Fund



Bonasone, Giulio, Bolognese, c. 1498–c. 1580

- *Noah Leaving the Ark (after Raphael)*, 1544, engraving, 2020.45.1, Ruth and Jacob Kainen Memorial Acquisition Fund

Borel, André-Marie-Paul, French, 1828–1912

- *View of a Shore*, c. 1881, etching with monotype wiping on Chinese paper, 2019.138.2, Purchased for the Virginia and Ira Jackson Collection

Bosse, Abraham, French, 1602–1676

- *La Galerie du Palais*, c. 1638, etching, 2020.63.2, Ailsa Mellon Bruce Fund

Bozzetti, Francesco, Italian, 1876–1949

- *Winter Landscape (Il bosco d'inverno)*, 1930, etching on China paper (?), 2020.46.6, Ailsa Mellon Bruce Fund

Bracquemond, Félix, French, 1833–1914

- *La Terrasse de la Villa Brancas*, 1876, etching, 2020.83.4, Purchased for the Virginia and Ira Jackson Collection

Bruycker, Jules de, Belgian, 1870–1945

- *Vieux canal (Old Canal)*, 1926, etching, 2020.32.2, Ailsa Mellon Bruce Fund

Caroto, Giovanni Francesco, Italian, c. 1480–1555/1558

- *Torello Saraina*, 1540, woodcut [proof], 2020.43.21, William B. O'Neal Fund

Carrà, Carlo, Italian, 1881–1966

- *Cengio*, 1922, etching, 2020.74.3, Ailsa Mellon Bruce Fund

Castiglione, Giovanni Benedetto, Italian, 1609–1664

- *The Bodies of Saints Peter and Paul Hidden in the Catacombs*, c. 1645/1647, etching, 2019.125.1, Ailsa Mellon Bruce Fund

Colombi-Borde, Francesco, Italian, 1848–1905

- *Attenta*, before 1882, etching [artist's proof], 2020.86.1, Ailsa Mellon Bruce Fund
- *Attenta*, before 1882, etching [artist's proof with additional work], 2020.86.2, Ailsa Mellon Bruce Fund
- *Attenta*, before 1882, etching [final state printed in black on chine collé], 2020.86.3, Ailsa Mellon Bruce Fund
- *Attenta*, before 1882, etching [final state printed in sepia on chine collé], 2020.86.4, Ailsa Mellon Bruce Fund

Conconi, Luigi, Italian, 1852–1917

- *Young Girl under a Tree*, c. 1907, etching with monotype wiping, 2019.147.1, purchased for the Virginia and Ira Jackson Collection

Corinth, Lovis, German, 1858–1925

- *Crying Girl*, 1899, etching in black, 2019.156.7, Gift of Christopher and Beverly With in memory of Karl and Gerda With

Coriolano, Bartolomeo, Italian, active 1627/1653

- *Sibyl (after Guido Reni)*, mid-17th century, chiaroscuro woodcut, printed from two blocks in black and green, 2020.31.1, Ailsa Mellon Bruce Fund

Crespi, Giuseppe Maria, Bolognese, 1665–1747

- *Bertoldo, Bertoldino, e Cacasenna*, c. 1710/1715, complete set of twenty etchings, 2020.43.1–20, William B. O'Neal Fund
- *Sleeping Shepherd Tickled by a Shepherdess*, c. 1736, etching, 2020.87.2, Ailsa Mellon Bruce Fund

Delacroix, Eugène, French, 1798–1863

- *A Blacksmith*, 1833, aquatint, 2020.83.3, Purchased as the Gift of Ellen von Seggern Richter and Jan Paul Richter and Ailsa Mellon Bruce Fund

Delâtre, Eugène, French, 1864–1938

- *Rue de Vaux, Le Mans*, after 1897, color aquatint with hand coloring, 2019.138.3, Purchased for the Virginia and Ira Jackson Collection

De Marne, Jean-Louis, French, 1744 or 1754–1829

- *The Little Cavalier (Le Petit Cavalier)*, late 18th/early 19th century, etching, 2020.36.1, Katharine Shepard Fund

Denis, Maurice, French, 1870–1943

- *Birth Announcement for Marthe Mellerio*, 1896, lithograph printed in gray and brown [proof], 2019.179.1, Gift of Nico and Bowie Cord
- *Birth Announcement for Jean-Dominique-Denis*, 1909, color relief print in green, dark green, and purple on card, 2019.179.2, Gift of Nico and Bowie Cord
- *Exposition de Turin 1911*, 1911, photomechanical print in blue, brown, and pink, 2019.179.3, Gift of Nico and Bowie Cord

De Nittis, Giuseppe, Italian, 1846–1884

- *Bust of an Italian Woman*, 1875/1880, drypoint, 2020.48.1, Purchased for the Virginia and Ira Jackson Collection

De Pian, Giovanni, Italian, 1764–1800

- *I Pozzi e i Piombi di Venezia (after Francesco Galimberti)*, 1797, complete series of eight etchings and aquatints, 2019.137.1–8, Ailsa Mellon Bruce Fund

Desprez, Louis-Jean, French, 1743–1804

- *Tomb with Death Standing*, 1779/1784, etching with black wash [working proof], 2019.153.1.a, b, New Century Fund and Eugene L. and Marie-Louise Garbáty Fund

Ehinger, Gabriel, German, 1652–1736

- *Democritus in Meditation (after Johann Heinrich Schönfeld)*, c. 1670, etching, 2019.133.1, Ruth and Jacob Kainen Memorial Acquisition Fund

English 18th Century

- *The Petitioning Vintners*, 1786, etching, 2019.184.4, Gift of Stephen and Claudine Ostrow

Estes, Richard, American, born 1932

- *D Train*, 1988, color screenprint, 2019.172.2, Gift of Thomas A. Cox

Faccioli, Girolamo, attributed to, Italian, active 1540s

- *Jupiter Defeating the Giants (after Perino del Vaga)*, 1540s, engraving, 2020.89.1, Ruth and Jacob Kainen Memorial Acquisition Fund

Fattori, Giovanni, Italian, 1825–1908

- *Il canino nero (The Little Black Dog)*, 1890s, zinc etching [proof before reduction of the plate], 2020.86.6, Ailsa Mellon Bruce Fund

Flameng, Leopold, French, 1831–1911

- *The Death of Doge Marino Faliero (after Eugène Delacroix)*, 1864, etching, 2019.184.5, Gift of Stephen and Claudine Ostrow

Flanagan, Barry, British, 1941–2009

- *Mirage I*, 1994, aquatint in black and gray, 2019.156.8, Gift of Christopher and Beverly With in memory of Karl and Gerda With

Franco, Battista, Italian, probably 1498–1561

- *Emperor Constantine Presenting the City of Rome to Pope Sylvester (after Giulio Romano)*, 1540, engraving and etching, 2020.90.1, Ruth and Jacob Kainen Memorial Acquisition Fund

Fratrel, Joseph, French, 1730–1783

- *The Personifications of the Arts and Sciences Pay Tribute to Carl Theodor von der Pfalz*, 1783, etching and drypoint, 2020.47.4, Ruth and Jacob Kainen Memorial Acquisition Fund

Gandolfi, Gaetano, Italian, 1734–1802

- *Saints Peter and Paul (after Guido Reni)*, 1785, etching and engraving, 2020.46.1, Ailsa Mellon Bruce Fund
- *Saints Peter and Paul (after Guido Reni)*, 1785, etching and engraving, 2020.46.2, Ailsa Mellon Bruce Fund
- *Saints Peter and Paul (after Guido Reni)*, 1785, etching and engraving, 2020.46.3, Ailsa Mellon Bruce Fund
- *Sheet with Seven Etchings*, c. 1775, seven etchings printed on one sheet of paper, 2020.46.5, Ailsa Mellon Bruce Fund
- *Adoration of the Shepherds*, 1780s, etching and aquatint, 2020.73.2, Ailsa Mellon Bruce Fund

Gandolfi, Mauro, Italian, 1764–1834

- *Portrait of a Nobleman (after David Teniers)* early 19th century, engraving, 2020.87.3, Ailsa Mellon Bruce Fund
- *Virgin and Child with the Young Saint John the Baptist (after Guido Reni)*, 1812, engraving, 2020.87.4, Ailsa Mellon Bruce Fund

Gaskell, Percival, British, 1868–1934

- *On the Lake of Thun*, 1929, aquatint, 2019.184.9, Gift in Memory of J. Donald Ostrow

Gaultier, Léonard, French, 1561–1641

- *The Last Judgement (after Martino Rota, after Michelangelo)*, c. 1600, engraving, 2019.185.1, Gift in Memory of Robert L. Shalkop, Curator and Museum Director
- *The Last Judgement (after Martino Rota, after Michelangelo)*, c. 1600, engraving, 2019.185.1, Gift in Memory of Robert L. Shalkop, Curator and Museum Director

Gavarni, Paul, French, 1804–1866

- *Jésus! Il vient de me passer une bête...*, 1842, handcolored lithograph, 2019.184.10, Gift in Memory of Alan Ostrow

German 15th Century

- *Arms of the Bishopric of Eichstätt and of Its Bishop*, Wilhelm of Reichenau, 1480, engraving, 2019.187.1, Anonymous Gift

Ghisi, Giorgio, Italian, 1520–1582

- *Allegorical Figure Holding a Sphere*, 1560s, engraving, 2020.73.3, Ruth and Jacob Kainen Memorial Acquisition Fund

Giampiccoli, Marco Sebastiano, Italian, died 1782

- *Raccolta delle principali prospettive della città di Venezia*, c. 1782, bound volume of 42 etchings after Canaletto and various artists, 2019.135.2, William B. O'Neal Fund

Gimignani, Giacinto, Italian, 1606–1681

- *The Holy Family with Saint Philip Neri in Adoration, an Angel, and Putti*, 1649, etching, 2019.129.2, Ailsa Mellon Bruce Fund and Purchased as the Gift of Robert B. Loper

Goldyne, Joseph, American, born 1942

- *The Spirit of St. Louis—Morris Lifted Over Caspar David Friedrich's Horizon*, 1973, color etching and monotype, 2020.81.1, Gift of Joseph Goldyne
- *One, Two, Three...All Gone*, 1980, color monotype, 2020.81.2, Gift of Joseph Goldyne

Grevedon, Henri, French, 1776–1860

- *Antonio Canova*, 1826, lithograph, 2020.40.2, Ailsa Mellon Bruce Fund

Herkomer, Hubert von, German, 1849–1914

- *Portrait of a Man*, 1881, etching, 2019.151.1, Joseph F. McCrindle Endowment Fund

Hesse, Eva, American, born Germany, 1936–1970

- *No title*, 1958, aquatint and etching, 2020.7.1, Avalon Fund and Gerald Cerny Fund
- *No title*, 1957/1958, sugarlift etching, 2020.7.2, Avalon Fund and Gerald Cerny Fund

Hollar, Wenceslaus, Bohemian, 1607–1677

- *The Mocking of Ceres (after Adam Elsheimer)*, 1646, etching, 2020.83.1, Ailsa Mellon Bruce Fund

lbels, Henri-Gabriel, French, 1867–1936

- *La Belle au bois rêvant; Mariage d'argent; Ahasvère*, 1893, color lithograph [proof before letters], 2019.121.1, Purchased as the Gift of Jeff Atlas in memory of Liane and Martin Atlas

Italian 16th Century

- *Sibyl Reading (after Ugo da Carpi)*, 16th century, chiaroscuro woodcut in two blocks, printed in black and brown, 2019.130.1, Ruth and Jacob Kainen Memorial Acquisition Fund

Jaeckel, Willy, German, 1888–1944

- *30th Canto, Falsifiers in Deeds*, 1923, softground etching and drypoint, 2019.156.9, Gift of Christopher and Beverly With in memory of Karl and Gerda With

Janinet, Jean-François, French, 1752–1814

- *1er Vue de Paris, Pris du Pont Royal (First View of Paris, from the Pont Royal) (after Pierre-Antoine-Demachy)*, 1782, color wash manner print, 2020.63.1, Ailsa Mellon Bruce Fund

Kaus, Max, German, 1891–1977

- *Selbstbildnis (Self-Portrait)*, 1973, woodcut, 2019.156.10, Gift of Christopher and Beverly With in memory of Karl and Gerda With

Kogan, Moisey, Russian, 1879–1943

- *Zwei Nackte Frauen (Two Nude Women)*, c. 1926, lithograph in black, silver, and gold, 2019.156.11, Gift of Christopher and Beverly With in memory of Karl and Gerda With

Küsel, Melchior, German, 1626–1683

- *Gideon Selects His Army at the River Jordan (after Johann Heinrich Schönfeld)*, c. 1655/1660, etching and engraving, 2020.47.3, Ruth and Jacob Kainen Memorial Acquisition Fund

Laliv de Jully, Ange-Laurent de, French, 1725–1779

- *Secret derobé à un ami (Secret Stolen from a Friend)*, 1760s, etching, inlaid in 19th-century paper mount, 2019.124.1, Katharine Shepard Fund

Lega, Achille, Italian, 1899–1934

- *Synthesis of a Seated Figure (Sintesi di figura seduta)*, 1917, etching and softground etching, 2020.74.2, Ailsa Mellon Bruce Fund

Le Rouge, George-Louis, French, 1712–1778

- *Les Jardins Anglo-Chinois [vol. I: Cahiers I, II, III, IV, VI, VII]*, 1775–1789, bound volume with 166 etched and engraved plates, 2019.186.1.1, Gift of William J. Wyer
- *Les Jardins Anglo-Chinois [vol. II: Cahiers VIII, IX, X, XI, XII, XIV]*, 1775–1789, bound volume with 113 etched and engraved plates, 2019.186.1.2, Gift of William J. Wyer
- *Les Jardins Anglo-Chinois [vol. III: Cahier XV, XVI, XVII, XVIII & XIX]*, 1775–1789, bound volume with 161 etched and engraved plates, 2019.186.1.3, Gift of William J. Wyer
- *Les Jardins Anglo-Chinois [vol. IV: Cahier V]*, 1775–1789, bound volume with letterpress and twenty etched and engraved plates, 2019.186.1.4, Gift of William J. Wyer
- *Les Jardins Anglo-Chinois [vol. V: Cahier XIII]*, 1775–1789, unbound volume with 26 etched and engraved prints, 2019.186.1.5, Gift of William J. Wyer

Le Roy, Mademoiselle, French, 18th century

- *Vue d'une ruine près Chantilly (after Louis Le Sueur)*, c. 1772, chalk manner printed in red, 2020.37.1, Katharine Shepard Fund
- *Vue d'une Laiterie près St. Maur-les-Paris (after Louis Le Sueur)*, c. 1772, chalk manner printed in red, 2020.37.2, Katharine Shepard Fund
- *Vue d'une Ruine près St. Maur-les-Paris (after Louis Le Sueur)*, c. 1772, chalk manner, printed in red, 2020.37.3, Katharine Shepard Fund
- *Vue du Moulin de Montville près Liancourt (after Louis Le Sueur)*, c. 1772, chalk manner printed in red, 2020.37.4, Katharine Shepard Fund

Lorrain, Claude, French, 1604/1605–1682

- *The Tempest*, 1630, etching, 2019.128.1, Ailsa Mellon Bruce Fund

Lunois, Alexandre, French, 1863–1916

- *Reverie: Young Woman Sitting by the Sea*, c. 1890, lithograph, 2019.138.1, Purchased for the Virginia and Ira Jackson Collection

Maulbertsch, Franz Anton, Austrian, 1724–1796

- *Allegory of Tolerance*, 1785, etching, 2020.47.2, Ruth and Jacob Kainen Memorial Acquisition Fund

Meyers, Linn, American, born 1968

- *Untitled*, 1998, etching with chine collé, 2019.156.12, Gift of Christopher and Beverly With in memory of Karl and Gerda With
- *Untitled*, 1998, etching with black pencil and chine collé, 2019.156.13, Gift of Christopher and Beverly With in memory of Karl and Gerda With
- *Untitled*, 1998, etching with chine collé, 2019.156.14, Gift of Christopher and Beverly With in memory of Karl and Gerda With

Migliara, Giovanni, Italian, 1785–1837

- *Lapide sforzesca, frontispiece to Provincia di Milano [first fascicule of Viaggio pittorico nel Regno Lombardo Veneto disegnato da Migliara...]*, 1827/1828, lithograph, 2020.87.1, Ailsa Mellon Bruce Fund

Milani, Aureliano, Italian, 1675–1749

- *The Way to Calvary*, 1725, etching from three plates, 2020.46.4, Ailsa Mellon Bruce Fund

Morin, Jean, French, c. 1600–1650

- *Virgin Adoring the Child (after Titian)*, mid-17th century, etching and engraving, 2020.42.1, Ailsa Mellon Bruce Fund

Moss, William, Francis Jukes, British, active 1775–1782

- *Part of Somerset House in the Strand*, 1777, etching, aquatint, and mezzotint, 2019.144.1, Ailsa Mellon Bruce Fund
- *Part of Somerset House in the Strand*, 1777, etching, aquatint, and mezzotint, 2019.144.2, Ailsa Mellon Bruce Fund

Munch, Edvard, Norwegian, 1863–1944

- *The Flower of Love*, 1896, lithograph, 2019.159.1, The Epstein Family Collection
- *Head by Head*, 1905, color woodcut, 2019.159.2, The Epstein Family Collection
- *Portrait of Tulla Larsen*, 1898, etching, 2019.159.3, The Epstein Family Collection
- *Portrait of Frederick Delius*, 1920, lithograph, 2019.159.4, The Epstein Family Collection

Nerly, Friedrich, German, 1807–1878

- *Il Carnevale di Roma (Carnival in Rome)*, c. 1829, etching, 2019.152.1, Purchased as the Gift of Vincent J. Buonanno

Nieuwenkamp, Wynand Otto Jan, Dutch, 1874–1950

- *Het Sluisje Te Edam (The Little Sluice, Edam)*, 1903/1910, etching, 2020.32.1, Ailsa Mellon Bruce Fund

Nolde, Emil, German, 1867–1956

- *Mausefallenmann (Fallen Mouse Man)*, 1906, woodcut on brown paper, 2019.156.15, Gift of Christopher and Beverly With in memory of Karl and Gerda With

Pechstein, Max, German, 1881–1955

- *Heischer*, 1917, woodcut, 2019.156.16, Gift of Christopher and Beverly With in memory of Karl and Gerda With

Perrier, François, French, 1594–1649

- *Simon Vouet*, 1632, etching and engraving, 2020.83.2, Ailsa Mellon Bruce Fund

Quellinus II, Erasmus, Flemish, 1607–1678

- *Four Dancing Children and Two Making Music*, c. 1640/1650, etching, 2020.40.3, Ailsa Mellon Bruce Fund

Radziwill, Franz, German, 1895–1993

- *Zehn Radierungen (Ten Etchings)*, 1922, portfolio of 10 etchings with lithographic cover, 2020.77.1, Gift of Doris and Dr. Gerd Presler, in honor of Andrew Robison

Raffet, Auguste, French, 1804–1860

- *Cover for the Album Lithographique of 1835*, 1835, lithograph, 2019.184.6, Gift of Stephen and Claudine Ostrow

Reddy, N. Krishna, American, born India, 1925–2018

- *Wave*, 1963, color viscosity intaglio, 2020.38.2, Ruth and Jacob Kainen Memorial Acquisition Fund

Richter, Johann Carl, German, 1759–after 1832

- *Vesuvausbruch von 1771 (The Eruption of Mount Vesuvius in 1771) (after Pierre-Jacques Volaire)*, c. 1797, etching and aquatint printed in brown, laid down on a mount with a contemporary printed ornamental border on blue paper and collaged title, 2020.36.3, Ruth and Jacob Kainen Memorial Acquisition Fund

Ritchie, Charles, American, born 1954

- *Rocking Chair*, 1995, mezzotint, 2019.156.17, Gift of Christopher and Beverly With in memory of Karl and Gerda With

Sadeler I, Jan, Flemish, 1550–1600

- *The Temptation of Christ (after Maarten de Vos)*, 1582, engraving, 2020.18.1, Gift of Susan Hill in Honor of Curator Gregory Jecmen

Sadeler II, Aegidius, Flemish, c. 1570–1629

- *Dante and Virgil in Hell (after Jacopo Ligozzi)*, 1590/1629, engraving, 2019.184.1, Gift of Stephen and Claudine Ostrow

- *Travelers Resting in a Forest near a Hut (after Pieter Stevens)*, late 16th/early 17th century, engraving, 2019.184.2, Gift of Stephen and Claudine Ostrow

Scholz, Willy, German, 1899–1965

- *Munich-Schloss Nymphenburg*, c. 1930, etching and aquatint, 2020.38.1, Ruth and Jacob Kainen Memorial Acquisition Fund

Schüz II, Christian Georg, German, 1758–1823

- *A Wide Riverscape with a View of Heidelberg Castle*, 1783, etching, 2020.47.1, Ruth and Jacob Kainen Memorial Acquisition Fund

Sultan, Donald, American, born 1951

- *Dried Red Rose*, 1994, color woodcut, 2019.156.18, Gift of Christopher and Beverly With in memory of Karl and Gerda With
- *Green Flowers*, 1994, color woodcut, 2019.156.19, Gift of Christopher and Beverly With in memory of Karl and Gerda With

Suyderhoff, Jonas, Dutch, c. 1613–1686

- *Peasant Interior with a Dancing Couple (after Adriaen van Ostade)*, mid/late 17th century, engraving, 2019.184.3, Gift of Stephen and Claudine Ostrow

Sweelinck, Gerrit Pietersz, Dutch, 1566–before 1612

- *Charity with Faith and Hope*, c. 1593, etching, 2020.40.1, Ruth and Jacob Kainen Memorial Acquisition Fund

Tuttle, Richard, American, born 1941

- *Eight Words from a Reading at Brooklyn College*, 1990, artist's book, 2020.95.1, Corcoran Gallery of Art (Gift of Brenda and Robert Edelson)

Valadon, Suzanne, French, 1865–1938

- *La Toilette*, 1895, soft ground etching and drypoint [proof], 2020.38.3, Purchased for the Virginia and Ira Jackson Collection

Valaresso, Zaccaria, Italian, 1686–1769

- *Rutzvanscad il Giovine: Arcisopratragichissima Tragedia*, 1737, bound volume with frontispiece and nine full-page etchings, printed in orange on blue paper, 2019.134.1, William B. O'Neal Fund

Veit, Erich, German, 1896–1981

- *Industrial Scene*, 1913, drypoint, 2020.73.4, Ruth and Jacob Kainen Memorial Acquisition Fund

Vertue, George, English, 1684–1756

- *Bibliotheca Radcliffiana* (after James Gibbs), 1737, bound volume in blue letterpress wrapper with five engravings paper, 2019.144.3, William B. O'Neal Fund

Vico, Enea, Italian, 1523–1567

- *The Forge of Vulcan* (after Francesco Primaticcio), c. 1546/1547, engraving, 2020.82.2, Ruth and Jacob Kainen Memorial Acquisition Fund

Vigerius, Marcus, Italian, 1446–1516

- *Decachordum Christianum*, 1507, bound volume with 9 full-page woodcuts, 33 small woodcuts, and illuminated initials, 2019.135.1, William B. O'Neal Fund



Lynda Benglis, *Comet*, 1982, bronze wire mesh with sprayed zinc, aluminum, and copper, Dorothy and Herbert Vogel Collection, 2019.154.2

## Sculptures

Benglis, Lynda, American, born 1941

- *Sacred Meal*, 2001, aluminum and copper wire coils covered with translucent, pigmented abaca paper, 2019.154.1, Dorothy and Herbert Vogel Collection

- *Comet*, 1982, bronze wire mesh with sprayed zinc, aluminum, and copper, 2019.154.2, Dorothy and Herbert Vogel Collection

Outterbridge, John, American, born 1933

- *Plus Tax: Shopping Bag Society, Rag Man Series*, 1971, mixed media, 2020.12.1, Purchased with funds from The Ahmanson Foundation and Howard and Roberta Ahmanson

Sturtevant, Elaine, American, 1924–2014

- *Oldenburg Pocketbook*, 1967, painted plaster, 2019.165.2, Gift of Virginia Dwan
- *Oldenburg Cake*, 1966, painted plaster, 2019.165.3, Gift of Virginia Dwan

## **Time-Based Media Art**

Benglis, Lynda, American, born 1941

- *Collage*, 1973, single-channel video with sound, color, 9:30 minutes, 2020.5.1, Firestone Fund
- *Document*, 1972, single-channel video with sound, black-and-white, 6:08 minutes, 2020.5.2, Firestone Fund
- *On Screen*, 1972, single-channel video with sound, black-and-white, 7:45 minutes, 2020.5.3, Firestone Fund



**National  
Gallery of Art**



**Changes of  
Attribution**

2020 Annual Report



Master of Girart de Roussillon, *Meeting of Achilles and Hector*, c. 1450–1460, miniature on vellum, Rosenwald Collection, 1946.21.9

Changes of attribution are the result of scholarly research using the latest art historical investigations and scientific examinations, and it is the policy of the National Gallery to publish these changes regularly. The following changes of attribution were proposed by National Gallery curators and approved by the National Gallery's Board of Trustees during fiscal year 2020. The list is arranged in alphabetical order according to former attribution, and includes changes of title and/or date if they were a part of the change of attribution.

## Drawing

1946.21.9

*Meeting of Achilles and Hector*, c. 1450–1460

Old: Netherlandish 15th Century

New: The Master of Girart de Roussillon

## Print

2008.115.13

*Skyscrapers*, 1926

Old: Gwen Bennett

New: Frans Masereel



Frans Masereel, *Skyscrapers*, 1926, woodcut, Reba and Dave Williams Collection, Florian Carr Fund, and Gift of the Print Research Foundation, 2008.115.13

# National Gallery of Art



## Exhibitions and Loans

2020 Annual Report

During the fiscal year, 233 lenders from 13 countries and 27 states loaned 547 works of art to 10 exhibitions. The National Gallery also worked on another 24 projects scheduled to open in the next five years and administered the tour of three exhibitions. United States Government Indemnity was secured for one exhibition on view in fiscal year 2020, resulting in savings of more than \$720,600 in insurance premiums.



Käthe Kollwitz, *Self-Portrait as a Young Woman*, c. 1900, pastel on laid paper, Gift of Robert and Chris Petteys, 1995.56.1

## Exhibitions

- *By the Light of the Silvery Moon: A Century of Lunar Photographs*

Continued from the previous fiscal year to January 5, 2020

Organized by the National Gallery of Art  
Diane Waggoner, curator

- *The Eye of the Sun: Nineteenth-Century Photographs from the National Gallery of Art*

Continued from the previous fiscal year to December 1, 2019

Organized by the National Gallery of Art  
Diane Waggoner and Kara Fiedorek, curators  
Made possible through the generous support of the Trellis Fund

- *Verrocchio: Sculptor and Painter of Renaissance Florence*

Continued from the previous fiscal year to January 12, 2020

Organized by the National Gallery of Art in collaboration with the Fondazione Palazzo Strozzi, Florence, and the Museo Nazionale del Bargello, Florence

Andrew Butterfield, Gretchen Hirschauer, Alison Luchs, and Eleonora Luciano, curators  
Bank of America is the proud lead sponsor of *Verrocchio: Sculptor and Painter of Renaissance Florence*.

Generous support has been kindly provided by the Buffy and William Cafritz Family Fund. Supported by an indemnity from the Federal Council on the Arts and the Humanities

- *The Touch of Color: Pastels at the National Gallery of Art*

Continued from the previous fiscal year to January 26, 2020

Organized by the National Gallery of Art  
Stacey Sell and Kimberly Schenck, curators  
Made possible by a generous grant from the Eugene V. and Clare E. Thaw Charitable Trust

- *Alonso Berruguete: First Sculptor of Renaissance Spain*

October 13, 2019–February 17, 2020

Organized by the National Gallery of Art, Washington, and the Meadows Museum, SMU, Dallas, in collaboration with the Museo Nacional de Escultura, Valladolid  
C. D. Dickerson, curator

Made possible through the generous support of the Buffy and William Cafritz Family Fund  
Additional funding provided by The Exhibition Circle of the National Gallery of Art

• *Richard Mosse: Incoming*

November 17, 2019–April 5, 2020 (closed March 14, 2020–April 5, 2020, due to COVID-19)

Organized by the National Gallery of Art  
Sarah Greenough and Andrea Nelson, curators

• *True to Nature: Open-Air Painting in Europe, 1780–1870*

February 2, 2020–November 15, 2020 (closed March 14, 2020–July 20, 2020, due to COVID-19)

Organized by the National Gallery of Art, Washington; the Fondation Custodia, Collection Frits Lugt, Paris; and the Fitzwilliam Museum, Cambridge  
Mary Morton, curator

• *Raphael and His Circle*

February 16, 2020–November 15, 2020 (closed March 14, 2020–October 13, 2020, due to COVID-19)

Organized by the National Gallery of Art, Washington  
Jonathan Bober, curator

• *Degas at the Opéra*

March 1, 2020–October 12, 2020 (closed March 14, 2020–July 20, 2020, due to COVID-19)

Organized by the National Gallery of Art, Washington, and the Musées d'Orsay et de l'Orangerie, Paris

Kimberly Jones, curator

BP America is proud to be a sponsor of this Washington, DC, exhibition as part of its support for the arts in the United States.

Adrienne Arsht also kindly provided a leadership gift for this exhibition. Additional funding is provided by Jacqueline B. Mars and The Exhibition Circle of the National Gallery of Art. Supported by an indemnity from the Federal Council on the Arts and the Humanities

## Lenders to Exhibitions

### Private Collections

John and Laura Arnold

Mr. and Mrs. Leon D. Black

André Bromberg

Michel David-Weill

Gabrielle Goldet

Michael Hall, Esq.

David Lachenmann

Jon Landau

Don Gregorio Marañón Bertrán de Lis

Elizabeth and Harvey Plotnick

Private Collection (Anonymous Lenders)

Private Collection, Chicago

Private Collection, courtesy Ambroise Duchemin

Private Collection, courtesy Halcyon Gallery, London

Private Collection, Dallas, courtesy of Kristy Stubbs Gallery

Vicente Ripollés Lengua

Dan and Mary Solomon

## Public Collections

### DENMARK

Copenhagen: Statens Museum for Kunst

### FRANCE

Paris: Bibliothèque Nationale de France; Collection de Bueil & Ract-Madoux; École Nationale Supérieure des Beaux-Arts; Fondation Custodia, Collection Frits Lugt; Galerie Chunhui & Bernard Lecomte; Musée d'Orsay; Musée du Louvre

### GERMANY

Berlin: Bode Museum; Staatliche Museen zu Berlin  
Frankfurt: Städelsches Kunstinstitut und Städtische Galerie  
Hamburg: Hamburger Kunsthalle

### ITALY

Florence: Galleria degli Uffizi; Museo Nazionale del Bargello; Palazzo della Signoria; Palazzo Pitti  
Rome: Istituto Nazionale per la Grafica

### JAPAN

Tokyo: The National Museum of Western Art

### NETHERLANDS

Amsterdam: Rijksmuseum

### SPAIN

Madrid: Ayuntamiento de Madrid  
Valencia: Museu de Belles Arts de València  
Valladolid: Museo Nacional de Escultura; Parroquia de Santiago Apóstol

### SWEDEN

Stockholm: Nationalmuseum

### SWITZERLAND

Basel: Fondation Beyeler

### UNITED KINGDOM–ENGLAND

Cambridge: The Fitzwilliam Museum  
London: The British Museum; The National Gallery; Victoria and Albert Museum

### UNITED KINGDOM–SCOTLAND

Edinburgh: National Galleries of Scotland  
Glasgow: The Burrell Collection; Glasgow Life (Glasgow Museums) on behalf of Glasgow City Council

### UNITED STATES

#### Arkansas

Little Rock: The Arkansas Arts Center

#### California

Los Angeles: The J. Paul Getty Museum; Hammer Museum  
San Francisco: Fine Arts Museums of San Francisco

#### Colorado

Denver: Denver Art Museum

#### Connecticut

Hartford: Wadsworth Atheneum Museum of Art

#### District of Columbia

Washington: Dumbarton Oaks; National Gallery of Art Library; The Phillips Collection

#### Illinois

Chicago: The Art Institute of Chicago

#### Louisiana

New Orleans: New Orleans Museum of Art

#### Maryland

Baltimore: The Baltimore Museum of Art

#### Massachusetts

Cambridge: Harvard Art Museums  
Williamstown: Sterling and Francine Clark Art Institute

Michigan

Detroit: The Detroit Institute of Arts

New York

Brooklyn: Brooklyn Museum

Buffalo: Albright-Knox Art Gallery

New York: The Frick Collection; Jack Shainman Gallery; The Metropolitan Museum of Art; The Morgan Library & Museum

Ohio

Oberlin: Allen Memorial Art Museum, Oberlin College

Rhode Island

Providence: Museum of Art, Rhode Island School of Design

Tennessee

Memphis: The Dixon Gallery and Gardens

Texas

Dallas: Dallas Museum of Art; Meadows Museum, Southern Methodist University

Houston: The Museum of Fine Arts, Houston, The Lewis Collection

Virginia

Norfolk: Chrysler Museum of Art

Washington

Tacoma: Tacoma Art Museum

## Lenders of Works Displayed with the National Gallery of Art Collection

Anonymous

Bernardo Bellotto

- *Pima, The Fortress of Sonnenstein*

Gerard ter Borch the Younger

- *The pressing invitation to drink*

German 18th Century

- *Pair of Female Figures*

Jacopo Palma il Giovane

- *Venus and Cupid at the Forge of Vulcan*

Jean-Antoine Houdon

- *Diana the Huntress*

Bartolomé Ordóñez

- *Saint Sebastian*

Collection of Roger Arvid Anderson

Possibly Germain Pilon

- *Veiled Mourner with Torch*

The Morris and Gwendolyn Cafritz Foundation

David Smith

- *Cubi XI*

Calder Foundation

Alexander Calder

- *1 Red, 4 Black plus X White*

- *4 Planes in Space*

- *Cheval Rouge*

- *Cheval Rouge (maquette)*

- *Cône d'ébène*

- *Descending Spines*

- *Fetishes*

- *La Touraine*

- *Louisa's 43rd Birthday Present*

- *Rat*

- *Red Panel*

- *Small Feathers*

- *The Big Ear*

- *Tom's*

- *Tower with Orange Band*

- *Untitled*

- *Untitled*

- *Untitled*

- *Untitled*

The Catholic University of America,

Oliveira Lima Library

Frans Post

- *Brazilian Landscape, Probably Pernambuco*

Cooper Hewitt, Smithsonian Design Museum,  
Smithsonian Institution

Giovanni Domenico Tiepolo

- *The Immaculate Conception*

Fioratti Collection

Giovanni Minello

- *Bust of a Woman*

Collection of Helen Frankenthaler Foundation, Inc.

Helen Frankenthaler

- *Mountains and Sea*

Glenstone Museum, Potomac, Maryland

Katharina Fritsch

- *Hahn/Cock*

Henry H. and Carol Brown Goldberg

Adolph Gottlieb

- *Hands of Oedipus*

Hakuta Family

Hughie Lee-Smith

- *Slum Song*

Harvard Fine Arts Library, Special Collections  
Clarence Kennedy

- *Plate 1: Christ as the Redeemer: Head*

- *Plate 2: Christ as the Redeemer: Left hand*

- *Plate 2a: Christ as the Redeemer: Right foot with drapery drawn across the ankle*

- *Plate 5: Christ as the Redeemer: Head of cherub, from the side*

- *Plate 6: Upper angel to observer's left: Head, looking to the right, as seen from in front*

- *Plate 13: Lower angel to observer's left: Head, facing slightly right, as seen from in front*

- *Plate 14: Lower angel to observer's left: Right wing*

- *Plate 16a: Lower angel to observer's left: Drapery below the waist*

- *Plate 19: Lower angel to observer's right: Head, facing slightly right, as seen from the left*

- *Plate 20a: Lower angel to observer's right: Drapery below the waist*

- *Plate 23: Faith: Head, not quite in profile to the right, as seen from the front*

- *Plate 24: Faith: Left hand, with drapery over the arm*

- *Plate 24a: Faith: Drapery behind the right thigh*

- *Plate 27a: Hope: Head, facing nearly left, as seen from the front*

- *Plate 28: Hope: Hair, veil and wing*

- *Plate 28b: Hope: Drapery below the waist*

- *Plate 31: Inscribed slab: Two putti upholding the inscription*

- *Plate 32: Inscribed slab: Head of the putto to observer's right*

- *Plate 32a: Inscribed slab: Legs and feet of the putto to observer's right*

Collection of the Artist

Jasper Johns

- *Dancers on a Plane*

- *Field Painting*

- *Target*

Kriegstein Collection

Anonymous Unknown 17th Century

- *Dutch States Yacht and Case*

The Metropolitan Museum of Art

Francesco di Giorgio Martini

- *The Nativity*

Musée du Louvre, Réunion des Musées

Nationaux, Paris

Venetian 16th Century

- *Boy on a Dolphin*



National Museum of Health and Medicine,  
Institute of Pathology

Thomas Eakins

- *Dr. John H. Brinton*

Shearbrook (US) LLC

Robert Indiana

- *ONE through ZERO (The Numbers)*

Candida and Rebecca Smith

David Smith

- *Aggressive Character*
- *Black-White Forward*

Robert H. Smith

Manner of Pugin

- *Marble Octagonal Pedestal*

Smithsonian American Art Museum

Sir Anthony van Dyck

- *Marchesa Elena Grimaldi-Cattaneo*

French 13th Century

- *Angel Holding a Cross and the Crown of Thorns*
- *Bishop Blessing*
- *Heraldic Panel*
- *Vita Contemplativa*

US Department of the Interior, National Park  
Service, Saint-Gaudens National Historic Site,  
Cornish, New Hampshire  
Augustus Saint-Gaudens

- *Study Head of a Black Soldier (6 works)*
- *Preliminary Sketch for Shaw Memorial*
- *Shaw Memorial*
- *Early Study of the Allegorical Figure for the Shaw Memorial*

The White House

Paul Cézanne

- *Hamlet at Payannet, near Gardanne (Hameau à Payannet près de Gardanne)*
- *Houses on a Hill, Provence [Maisons sur un colline]*
- *Still Life with Skull*

Mr. and Mrs. Erving Wolf

Horatio Greenough

- *Portrait of George Washington*

Anna Hyatt Huntington

- *Yawning Panther*

Frederick William MacMonnies

- *Nathan Hale*
- *Pan of Rohallion*

Paul Manship

- *Actaeon*
- *Atalanta*
- *Briseis*
- *Flight of Europa*
- *Flight of Night*
- *Oriental Dancer: Vase*
- *Panther leaping at deer (Bronze Relief from the New York Century Association Flower Boxes)*
- *Salome*

Edward McCartan

- *Bacchus*
- *Nymph and Satyr*

Augustus Saint-Gaudens

- *"The Puritan" (Deacon Samuel Chapin)*
- *Samuel Gray Ward*
- *Robert Louis Stevenson (square format)*
- *Robert Louis Stevenson (horizontal format)*
- *Victory/Peace*

## National Gallery Loans to Temporary Exhibitions

The department of loans and the National Lending Service administered the loans of 432 works of art to 158 sites during fiscal year 2020. This number includes the loans of 308 works to temporary exhibitions at 113 institutions and the extended loans of 106 National Gallery works to 35 sites.

\* Works in the National Lending Service

### AUSTRALIA

Canberra, National Gallery of Australia  
*Matisse & Picasso*  
December 13, 2019–April 13, 2020  
Henri Matisse

- *Still Life with Sleeping Woman*

### AUSTRIA

Vienna, Albertina  
*Albrecht Durer (Albertina)*  
September 20, 2019–January 6, 2020  
Albrecht Dürer

- *Young Woman in Netherlandish Dress*
- *The Entombment*
- *An Oriental Ruler Seated on His Throne*
- *A Pastoral Landscape with Shepherds Playing a Viola and Panpipes*

Vienna, Kunstforum Wien  
*Pierre Bonnard: The Color of Memory*  
October 10, 2019–January 12, 2020  
Pierre Bonnard

- *Stairs in the Artist's Garden* \*
- *Nude in an Interior*

### BELGIUM

Ghent, Museum voor Schone Kunsten  
*Jan van Eyck: An Optical Revolution*  
February 1, 2020–April 30, 2020  
Jan van Eyck

- *The Annunciation*

### CANADA

Toronto, Art Gallery of Ontario  
*Early Rubens*  
October 12, 2019–January 5, 2020

- *Sir Peter Paul Rubens*
- *Daniel in the Lions' Den*

### FRANCE

Chantilly, Musée Condé  
*The Nude Mona Lisa*  
June 1, 2019–October 6, 2019  
François Clouet

- *A Lady in Her Bath*

Le Cateau-Cambrésis, Musée Matisse,  
Le Cateau-Cambrésis  
*Becoming Matisse: The Greatest Gift of the Masters, 1890–1911*

November 9, 2019–February 9, 2020  
Jean-Baptiste-Camille Corot

- *Woman Reading in the Studio*

Le Havre, Musée d'art moderne André Malraux  
*Raoul Dufy in Le Havre*  
May 18, 2019–November 3, 2019  
Raoul Dufy

- *The Beach at Sainte-Adresse*

Paris, Galeries nationales du Grand Palais  
*Toulouse-Lautrec: Resolutely Modern*  
October 9, 2019–January 27, 2020  
Henri de Toulouse-Lautrec

- *Carmen Gaudin*
- *A la Bastille (Jeanne Wenz)*

Paris, Musée d'Orsay  
*Degas at the Opéra*  
September 24, 2019–January 19, 2020  
Circulated to: National Gallery of Art  
March 1, 2020–October 12, 2020

Edgar Degas

- *Before the Ballet*
- *Dancers in the Wings*
- *On Stage I*
- *Dancers in the Wings*

- *Dancer Seen from Behind and Three Studies of Feet*
- *The Green Room*
- *Dancers Backstage*
- *Dancers at the Old Opera House*
- *Three Dancers Resting*
- *Three Studies of Ludovic Halévy Standing*
- *The Dance Lesson*
- *Virginie Being Admired While the Marquis Cavalcanti Looks On*
- *Spanish Dancers and Musicians*
- *The Curtain*
- *The Dance Class*

Edgar Degas, executed in collaboration with Vicomte Lepic

- *The Ballet Master*

*Félix Fénéon (1861–1944). The modern times, from Seurat to Matisse*

October 16, 2019–January 27, 2020

Georges Seurat

- *Seascape at Port-en-Bessin, Normandy* \*

Paris, Musée du Grand Palais

*El Greco: Ambition and Defiance*

October 16, 2019–February 10, 2020

Circulated to: The Art Institute of Chicago

March 5, 2020–October 19, 2020

El Greco (Domenikos Theotokopoulos)

- *Saint Martin and the Beggar*
- *Christ Cleansing the Temple* (Musée du Grand Palais only)

Paris, Musée du Louvre

*Soulages at the Louvre*

December 11, 2019–March 9, 2020

Pierre Soulages

- *Peinture 326 x 181 cm, 14 mars 2009*

Paris, Musée Marmottan Monet

*Cezanne and the Master Painters.*

*A Dream of Italy*

February 27, 2020–January 3, 2021

Paul Cézanne

- *The Gardener Vallier*

Paris, Musée national d'art moderne,

Centre Georges Pompidou

*Christo et Jeanne-Claude. Paris!*

July 1, 2020–October 19, 2020

Christo

- *Package 1961*

GERMANY

Cologne, Wallraf-Richartz-Museum

*Inside Rembrandt. 1601–1669*

November 1, 2019–March 1, 2020

Rembrandt van Rijn

- *Saskia van Uylenburgh, the Wife of the Artist*

Frankfurt, Schirn Kunsthalle Frankfurt

*Lee Krasner: Living Color*

October 11, 2019–January 12, 2020

Circulated to: Zentrum Paul Klee

February 7, 2020–August 16, 2020

Circulated to: Museo Guggenheim Bilbao

September 18, 2020–January 10, 2021

Lee Krasner

- *Imperative*

Frankfurt, Städtisches Kunstinstitut und

Städtische Galerie

*Making Van Gogh: A German Love Story*

October 23, 2019–February 16, 2020

Vincent van Gogh

- *Farmhouse in Provence*

Hannover, Niedersächsisches Landesmuseum

Hannover

*Zeitenwende 1400: die goldene Tafel als*

*europäisches Meisterwerk*

September 27, 2019–February 23, 2020

Master of Saint Veronica

- *The Crucifixion*

Munich, Bayerisches Staatsgemäldesammlungen-

Alte Pinakothek

*Van Dyck*

October 25, 2019–February 2, 2020

Sir Anthony van Dyck

- *Susanna Fourment and Her Daughter*
- *Head of a Young Man*

Potsdam, Museum Barberini

*Van Gogh: Still Lifes*

October 26, 2019–February 2, 2020

Vincent van Gogh

- *Still Life of Oranges and Lemons with Blue Gloves*

## HUNGARY

Budapest, Museum of Fine Arts, Budapest

*Rubens, Van Dyck, and the Splendor of Flemish Painting*

October 30, 2019–February 16, 2020

Sir Anthony van Dyck

- *Queen Henrietta Maria with Sir Jeffrey Hudson*

Sir Peter Paul Rubens

- *Marchesa Brigida Spinola Doria*

## ITALY

Bologna, Palazzo Fava

*The Rediscovery of a Masterpiece*

May 18, 2020–February 15, 2021

Francesco del Cossa

- *Saint Florian*
- *Saint Lucy*
- *The Crucifixion*

Florence, Palazzo Pitti

*Forged in Fire. Bronze Sculpture in Florence under the Last Medici*

September 18, 2019–January 12, 2020

Giovanni Battista Foggini

- *Bacchus and Ariadne*

Giuseppe Piamontini

- *Venus and Cupid*

Milan, Palazzo Reale, Milan

*Georges de La Tour. L'Europa della luce*

February 7, 2020–September 27, 2020

Georges de La Tour

- *The Repentant Magdalen*

Rome, Scuderie del Quirinale

*Raffaello 1520–1483*

March 3, 2020–August 30, 2020

Raphael

- *The Alba Madonna*

- *A Marble Horse on the Quirinal Hill [recto]*

Turin, Museo Civico d'Arte Antica e

Palazzo Madama

*Andrea Mantegna. Making Antiquity Modern*

December 12, 2019–July 20, 2020

Correggio

- *The Mystic Marriage of Saint Catherine*

Andrea Mantegna

- *Portrait of a Man*

Moderno

- *Mars Surrounded by Trophies*

Workshop of Andrea Mantegna

- *The Triumph of Caesar: The Senators*

## JAPAN

Tokyo, Mitsubishi Ichigokan Museum

*Dreamed Childhoods—Bonnard, the Nabis, and Childhood*

February 15, 2020–September 22, 2020

Edouard Vuillard

- *Child Wearing a Red Scarf*

Toyota, Toyota Municipal Museum of Art

*Gustav Klimt: Vienna–Japan 1900*

July 23, 2019–October 14, 2019

Gustav Klimt

- *Baby (Cradle)*

## NETHERLANDS

Amsterdam, Rijksmuseum

*Caravaggio-Bernini. Baroque in Rome*

February 14, 2020–September 13, 2020

Tanzio da Varallo

- *Saint Sebastian*

Amsterdam, Van Gogh Museum

*Jean-François Millet: Sowing the Seeds of Modern Art*

October 4, 2019–January 12, 2020  
Circulated to: Saint Louis Art Museum  
February 16, 2020–September 7, 2020  
Jean-François Millet

- *The Bather*

Camille Pissarro

- *Peasant Girl with a Straw Hat*

Delft, Museum Prinsenhof Delft  
*Pieter de Hooch in Delft. From the Shadow of Vermeer*

October 11, 2019–February 16, 2020

Pieter de Hooch

- *A Dutch Courtyard*
- *The Bedroom*

## SPAIN

Madrid, Fundación Juan March  
*The Irascibles: Painters Against the Museum. New York, 1950*

March 6, 2020–June 7, 2020

Mark Rothko

- *Untitled* \*

Madrid, Instituto de Cultura, Fundación MAPFRE  
*Boldini and Late 19th Century Spanish Painting. The Spirit of an Age*

September 19, 2019–January 12, 2020

Mariano Fortuny y Carbó

- *The Choice of a Model*

Madrid, Museo Nacional del Prado  
*A Tale of Two Women Painters: Sofonisba*

*Anguissola and Lavinia Fontana*

October 22, 2019–February 2, 2020

Felice Antonio Casone

- *Lavinia Fontana, 1552–1614, Bolognese Painter [obverse]*

Madrid, Museo Thyssen-Bornemisza

*The Impressionists and Photography*

October 15, 2019–January 26, 2020

Claude Monet

- *Bazille and Camille (Study for “Déjeuner sur l’Herbe”)*

*Rembrandt and Amsterdam portraiture, 1590–1670*

February 18, 2020–August 30, 2020

Frans Hals

- *Portrait of a Member of the Haarlem Civic Guard*

Rembrandt van Rijn

- *Portrait of a Gentleman with a Tall Hat and Gloves*
- *Portrait of a Lady with an Ostrich-Feather Fan*

Michael Sweerts

- *Anthonij de Bordes and His Valet*

## SWITZERLAND

Zurich, Kunsthaus Zürich

*Wilhelm Leibl—The Art of Seeing*

October 25, 2019–January 19, 2020

Circulated to: Albertina

January 31, 2020–July 26, 2020

Wilhelm Leibl

- *Malres! Working in the Kitchen*
- *Two Women in the Kitchen*

## UNITED KINGDOM

London, Barbican Art Gallery

*Into the Night. Cabarets and Clubs in Modern Art*

October 4, 2019–January 19, 2020

Circulated to: Belvedere

February 14, 2020–June 1, 2020

Henri de Toulouse-Lautrec (artist); André Marty (publisher); Edouard Ancourt (printer)

- *Miss Loïe Fuller*
- *Miss Loïe Fuller*

London, Dulwich Picture Gallery

*Rembrandt’s Light*

October 4, 2019–February 2, 2020

Rembrandt van Rijn

- *Philemon and Baucis*

London, The National Gallery

*Gauguin Portraits*

October 7, 2019–January 26, 2020

Paul Gauguin

- *Père Paillard*
- *Self-Portrait Dedicated to Carrière*

London, Tate

*William Blake (Tate)*

September 11, 2019–February 2, 2020

William Blake

- *The Great Red Dragon and the Beast from the Sea*
- *Evening*

*Aubrey Beardsley*

March 4, 2020–September 20, 2020

Aubrey Beardsley

- *Caricature of J. M. Whistler*
- *Withered Spring*
- *Tannhäuser*

## UNITED STATES

California

Los Angeles, The J. Paul Getty Museum

*Manet and Modern Beauty*

October 8, 2019–January 12, 2020

Edouard Manet

- *Flowers in a Crystal Vase*
- *Plum Brandy*

Los Angeles, Los Angeles County Museum of Art

*Yoshitomo Nara*

April 5, 2020–July 25, 2021

Yoshitomo Nara

- *Midnight Truth*

San Francisco, Fine Arts Museums of

San Francisco, Legion of Honor

*James Tissot: Fashion & Faith*

October 12, 2019–February 9, 2020

Circulated to: Musée d'Orsay

June 23, 2020–September 13, 2020

James Jacques Joseph Tissot

- *Hide and Seek*

San Francisco, San Francisco Museum of Modern Art

*Signs and Wonders: The Photographs of John Beasley Greene*

August 31, 2019–January 5, 2020

Circulated to: The Art Institute of Chicago

February 8, 2020–August 10, 2020

John Beasley Greene

- *Pyramid of Cheops, Giza*

Colorado

Denver, Denver Art Museum

*Monet: Places*

October 20, 2019–February 2, 2020

Circulated to: Museum Barberini

February 29, 2020–July 19, 2020

Claude Monet

- *Argenteuil*

District of Columbia

Washington, American University Museum at the Katzen Arts Center

*Grace Hartigan and Helene Herzbrun: Reframing Abstract Expressionism*

September 3, 2019–October 20, 2019

Grace Hartigan

- *Summer Street*

Washington, National Portrait Gallery

*One Life: Marian Anderson*

June 28, 2019–March 13, 2020

Gordon Parks

- *Washington, D.C. Marian Anderson broadcasting a Negro spiritual at the dedication of a mural installed in the United States Department of the Interior building, commemorating the outdoor concert which she gave at the Lincoln Memorial after the Daughters of the American Revolution refused to allow her to sing in Constitution Hall*

Washington, Smithsonian American Art Museum

*Alexander von Humboldt and the United States: Art, Nature, and Culture*

March 20, 2020–January 3, 2021

George Catlin

- *See-non-ty-a, an Iowa Medicine Man* \*

Frederic Edwin Church

- *Niagara*

Washington, The Phillips Collection  
*Riffs and Relations: African American Artists  
and the European Modernist Tradition*  
February 29, 2020–January 3, 2021  
Karl Schmidt-Rottluff

- *Three at a Table (Drei am Tisch)*

Claude Monet

- *Woman with a Parasol—Madame Monet  
and Her Son*

Carrie Mae Weems

- *After Manet*

Florida

Fort Lauderdale, NSU Museum of Art,  
Fort Lauderdale  
*Happy!*

October 27, 2019–October 11, 2020

Mark Rothko

- *The Party* \*
- *Untitled* \*

Georgia

Atlanta, Michael C. Carlos Museum  
*Through a Glass, Darkly: Allegory and Faith  
in Netherlandish Prints from Lucas van Leyden  
to Rembrandt*

August 31, 2019–December 1, 2019

Adriaen Collaert after Hans Bol

- *The Parable of the Rich Fool*
- *The Parable of the Barren Fig Tree*

• *The Parable of the Kingdom of Heaven*  
Dirck Volckertz Coornhert after Maerten  
van Heemskerck

- *The Triumph of Patience*
- *The Triumph of Job*
- *The Triumph of Saint Stephen*
- *The Triumph of Christ*
- *The Return of the Prodigal Son*

Atlanta, High Museum of Art  
*Sally Mann: A Thousand Crossings*  
October 19, 2019–December 16, 2019  
Sally Mann

- *Untitled (Self-Portrait)*
- *The Alligator's Approach*
- *Cherry Tomatoes*
- *Jessie at Six*
- *Jessie at Nine*
- *Deep South, Untitled (Scarred Tree)*
- *Deep South, Untitled (Three Drips)*
- *Battlefields, Cold Harbor (Battle)*
- *Ponder Heart*

Illinois

Chicago, The Art Institute of Chicago  
*Andy Warhol—From A to B and Back Again*  
October 20, 2019–January 26, 2020  
Andy Warhol

- *A Boy for Meg* \*

Maryland

Baltimore, The Baltimore Museum of Art  
*Generations: A History of Black Abstract Art*  
September 29, 2019–January 19, 2020  
Al Loving

- *Brownie, Sunny, Dave, and Al*

Massachusetts

Gloucester, Cape Ann Historical Museum  
*Homer at the Beach: A Marine Painter's Journey,  
1869–1880*  
August 3, 2019–December 1, 2019  
Winslow Homer

- *East Hampton Beach, Long Island*

North Adams, Massachusetts Museum  
of Contemporary Art  
*Sol LeWitt: A Wall Drawing Retrospective*  
November 14, 2008–November 14, 2043  
Sol LeWitt

- *Wall Drawing No. 681 C / A wall divided ver-  
tically into four equal squares separated and  
bordered by black bands. Within each square,  
bands in one of four directions, each with color ink  
washes superimposed.*

Williamstown, Sterling and Francine Clark  
Art Institute  
*Ida O'Keeffe: Escaping Georgia's Shadow*  
July 4, 2019–October 14, 2019  
Alfred Stieglitz

- *Ida O'Keeffe*
- *Ida O'Keeffe*
- *Crow's Feather and Apple*
- *Ida and Georgia O'Keeffe [recto]*
- *Ida and Georgia O'Keeffe*

Nevada

Reno, Nevada Museum of Art  
*Georgia O'Keeffe: Living Modern*

July 20, 2019–October 20, 2019

Circulated to: Norton Museum of Art  
November 22, 2019–February 2, 2020

Alfred Stieglitz

- *Georgia O'Keeffe*
- *Georgia O'Keeffe*
- *Georgia O'Keeffe*
- *Georgia O'Keeffe*
- *Georgia O'Keeffe*
- *Georgia O'Keeffe*
- *Georgia O'Keeffe*
- *Georgia O'Keeffe*

Georgia O'Keeffe

- *Jack-in-the-Pulpit No. 3*
- *Winter Road I*

New York

Catskill, Thomas Cole National Historic Site  
*Thomas Cole's Refrain: The Paintings of  
Catskill Creek*

May 4, 2019–November 3, 2019

Circulated to: The Hudson River Museum  
November 22, 2019–February 23, 2020

Thomas Cole

- *Study for "Catskill Creek"*

New York, The Frick Collection

*Bertoldo di Giovanni: The Renaissance of  
Sculpture in Medici Florence*

September 18, 2019–January 12, 2020

Bertoldo di Giovanni

- *Antonio Gratiadei, died 1491, Imperial Envoy  
[obverse]*

New York, Galerie St. Etienne

*80th Anniversary Galerie St. Etienne*

October 22, 2019–February 29, 2020

Gustav Klimt

- *Baby (Cradle)*

Egon Schiele

- *Self-Portrait*

Paula Modersohn-Becker

- *Old Factory*

New York, Jewish Museum

*Edith Halpert and the Rise of American Art*

October 18, 2019–February 9, 2020

Asahel Powers

- *Possibly William Sheldon*
- *Possibly Mrs. William Sheldon*

The Gansevoort Limner (Possibly Pieter  
Vanderlyn)

- *Miss Van Alen \**

Joseph Whiting Stock

- *Baby in Wicker Basket \**

New York, Lévy Gorvy Art Gallery

*Pierre Soulages: A Century*

September 5, 2019–October 26, 2019

Pierre Soulages

- *Peinture 195 x 130 cm, 30 octobre 1957\**

New York, The Metropolitan Museum of Art

*The Last Knight: The Art, Armor, and Ambition  
of Maximilian I*

October 7, 2019–Jan 5, 2020

Ambrogio de Predis

- *Bianca Maria Sforza*

Albrecht Dürer

- *Italian Joust*
- *Masquerade Dance with Torches*
- *The Triumphal Arch of Maximilian*

German 16th Century

- *Masquerade*
- *Freydal, The Book of Jousts and Tournaments  
of Emperor Maximilian I: Combats on Horseback  
Jousts (Volume I): Plate 11*



- *Freydal, The Book of Jousts and Tournaments of Emperor Maximilian I: Combats on Horseback Jousts (Volume I): Plate 21*
- *Freydal, The Book of Jousts and Tournaments of Emperor Maximilian I: Combats on Horseback Jousts (Volume I): Christoph Lamberger Plate 54*
- *Freydal, The Book of Jousts and Tournaments of Emperor Maximilian I: Combats on Horseback Jousts (Volume I): Plate 69*
- *Freydal, The Book of Jousts and Tournament of Emperor Maximilian I: Combats on Horseback Jousts (Volume II): Plate 84*
- *Freydal, The Book of Jousts and Tournament of Emperor Maximilian I: Combats on Horseback Jousts (Volume II) Jacob de Heri: Plate 96*
- *Freydal, The Book of Jousts and Tournament of Emperor Maximilian I: Combats on Horseback Jousts (Volume II): Friedrich von Horn Plate 98*
- *Freydal, The Book of Jousts and Tournament of Emperor Maximilian I: Combats on Foot Jousts (Volume III): Plate 123*

Hans Burgkmair I

- *Emperor Maximilian I*

Daniel Hopfer

- *Emperor Maximilian I in the Guise of Saint George*

*The Renaissance of Etching*

October 23, 2019–January 20, 2020

Augustin Hirschvogel

- *Landscape with a Village Church*

Jacques Androuet Ducerceau I (author)

- *De Architectura, Iacob Androvetti du Cerceau, Opus. Quo descriptae sunt aedificiorum quinquaginta plane dissimilium ichnographiae...; Second Livre D'Architecture, Par Jacques Androuet du Cerceau...*

New York, The Morgan Library & Museum

*John Singer Sargent: Portraits in Charcoal*

October 4, 2019–January 12, 2020

Circulated to: National Portrait Gallery, Washington

February 28, 2020–March 13, 2020

John Singer Sargent

- *The Rt. Reverend William Lawrence*
- *Olimpio Fusco* (The Morgan Library & Museum only)

*The Drawings of Al Taylor*

February 21, 2020–September 13, 2020

Al Taylor

- *Hanging Puddles*

New York, Museum of Modern Art

*Judd*

March 1, 2020–January 9, 2021

Donald Judd

- *Untitled*

New York, Neue Galerie

*Ernst Ludwig Kirchner*

October 3, 2019–January 13, 2020

Ernst Ludwig Kirchner

- *Two Nudes [obverse]*
- *Dance Hall Bellevue [obverse]*
- *Two Girls under an Umbrella*
- *Peter Schlemihls wundersame Geschichte (Peter Schlemihl's Wondrous Story) (Title Page)*
- *Peter Schlemihls wundersame Geschichte: Der Verkauf des Schattens (Peter Schlemihl's Wondrous Story: The Sale of His Shadow)*
- *Peter Schlemihls wundersame Geschichte: Die Geliebte (Peter Schlemihl's Wondrous Story: The Beloved)*
- *Peter Schlemihls wundersame Geschichte: Kämpfe. Qualen der Liebe (Peter Schlemihl's Wondrous Story: Battles. The Agonies of Love)*
- *Peter Schlemihls wundersame Geschichte: Schlemihl in der Einsamkeit des Zimmers (Peter Schlemihl's Wondrous Story: Schlemihl in the Solitude of His Room)*
- *Peter Schlemihls wundersame Geschichte: Begegnung Schlemihls mit dem grauen Männlein auf der Landstrasse (Peter Schlemihl's Wondrous Story: Schlemihl Encounters the Little Gray Man on the Road)*

• *Peter Schlemihls wundersame Geschichte: Schlemihls Begegnung mit dem Schatten (Peter Schlemihl's Wondrous Story: Schlemihl's Encounter with His Shadow)*

New York, The Met Breuer

*Vija Celmins: To Fix the Image in Memory*

September 24, 2019–January 12, 2020

Vija Celmins

- *Airplane Disaster*
- *Pink Pearl Eraser*
- *Rhinoceros*
- *Tulip Car #1*

*Gerhard Richter: Painting After All*

March 4, 2020–March 12, 2020

Gerhard Richter

- *2.5.89 (May 2, 1989)*
- *3.5.89 (May 3, 1989)*
- *4.5.89 (May 4, 1989)*
- *5.5.89 (May 5, 1989)*
- *6.5.89 (May 6, 1989)*
- *7.5.89 (May 7, 1989)*

New York, The Shed

*Agnes Denes: Absolutes and Intermediates*

October 9, 2019–March 12, 2020

Agnes Denes

- *Arthropoid*

New York, Whitney Museum of American Art

*Vida Americana: Mexican Muralists Remake American Art, 1925–1945*

February 17, 2020–January 31, 2021

William Gropper

- *Strike*

Paul Strand

- *Boy, Hidalgo*

Will Barnet

- *Vigilantes*

Aaron Douglas

- *Into Bondage*

Ohio

Toledo, Toledo Museum of Art

*ONE EACH: Still Life by Pissarro, Cézanne, Manet, & Friends*

January 18, 2020–August 23, 2020

Claude Monet

- *Still Life with Bottle, Carafe, Bread, and Wine*

South Carolina

Columbia, Columbia Museum of Art

*Vincent van Gogh and His Inspirations*

October 4, 2019–January 12, 2020

Vincent van Gogh

- *Flower Beds in Holland*

Texas

Dallas, Meadows Museum, Southern Methodist University

*Alonso Berruguete: First Sculptor of Renaissance Spain*

September 20, 2020–January 10, 2021

Martin Schongauer

- *Death of the Virgin*

Juan de Flandes

- *The Adoration of the Magi*
- *The Baptism of Christ*

Fort Worth, Amon Carter Museum

*Gordon Parks: The New Tide, Early Work 1940–1950*

August 31, 2019–December 29, 2019

Circulated to: Addison Gallery of American Art, Phillips Academy

February 1, 2020–April 26, 2020

Gordon Parks

- *Captain Bill Lafond, 60 year old fisherman at Gloucester, owns three boats. Gloucester, Massachusetts*
- *Dinner Time at Mr. Hercules Brown's Home, Somerville, Maine*
- *Lee Masters, dairy farmer. Cooperstown, New York.*
- *Roy Emerson Stryker*
- *Alexander Liberman*

- *In mortuary Red and Herbie Levy study wounds on face of Maurice Gaines, a buddy of theirs who was found dying one night on a Harlem sidewalk*
- *Trapped in abandoned building by a rival gang on street, Red Jackson ponders his next move*
- *Death Room, Fort Scott, Kansas*
- *Gambling Woman, Caribe Hilton Hotel, San Juan, Puerto Rico*
- *Mrs. Mullens, Fort Scott, Kansas*
- *Mother and Children, San Juan, Puerto Rico*
- *Tenement House, Ansonia, Connecticut*
- *Girl with Baby, Estoril, Portugal*
- *Washington, D.C., Mrs. Ella Watson, a Government Charwoman*
- *Frisco Railway Station, Fort Scott, Kansas*
- *Drug store “cowboys.” Black Diamond, Alberta, Canada*
- *Gloucester fishermen pulling in their nets to bring their catch nearer to the surface so the dip net can transfer them to the big boat. Gloucester, Massachusetts*
- *Harlem Rooftops*
- *Langston Hughes, Chicago*
- *Lt. George Knox. 332nd Fighter Group training at Selfridge Field, Michigan “Fighters up! And good luck.”*
- *Ingrid Bergman, Stromboli, Italy*

Fort Worth, Kimbell Art Museum  
*Renoir: The Body, The Senses*  
 October 27, 2019–January 26, 2020

*Auguste Renoir, Young Woman Braiding Her Hair*  
 Paul Cézanne

- *The Battle of Love \**

Aristide Maillol

- *The Three Nymphs*

Jean-Baptiste-Camille Corot

- *The Repose*

Virginia

Norfolk, Chrysler Museum of Art  
*Thomas Jefferson Architect: Palladian Models, Democratic Principles, and the Conflict of Ideals*  
 October 19, 2019–January 19, 2020

Jan van der Heyden

- *An Architectural Fantasy*

William Kent (author)

- *The Designs of Inigo Jones Consisting of Plans and Elevations for Publick and Private Buildings. Publish'd by William Kent, With some Additional Designs. The First [Second] Volume*

Andrea Palladio (author)

- *I Quattro Libri dell'Architettura Di Andrea Palladio. Ne' quali, dopo un breue trattato de' cinque ordini, & di quelli auertimenti, che sono piu necessarij nel fabricare; Si Tratta Delle Case Private, delle Vie, de i Ponti, delle Piazze, de i Xisti, et de' Tempij.*

Charles Louis Clérisseau

- *L'Ordre Corinthian*

Julien David Le Roy (author)

- *Les Ruines Des Plus Beaux Monuments de la Grece: Ouvrage Divisé en Deux Parties, Ou L'On Considere, dans la Premiere, Ces Monuments Du Côté de l'Histoire; et dans la Seconde, du Côté de l'Architecture*

Pierre Patte (author)

- *Monumens Érigés En France A La Gloire De Louis XV, Précédés d'un Tableau du progrès des Arts & des Sciences sous ce règne,...Ouvrage enrichi des Places du Roi, gravées en tailedouce*

Charles Louis Clérisseau

- *Roman Ruins with a Sepulchre*

*Edvard Munch and the Cycle of Life*  
 February 28, 2020–September 6, 2020

Edvard Munch

- *The Morning After (Der Tag danach)*
- *Geschrei (The Scream)*
- *Man's Head in Woman's Hair (Mannerkopf in Frauenharr)*
- *Cafe Bauer, Berlin*
- *Ibsen with Lighthouse (Ibsen mit Leuchtturm)*
- *Professor Jacobsen*
- *The Young Model (Das junge Modell)*
- *The Dead Lovers (Totes Liebespaar)*

- *The Maiden and the Heart (Das Madchen und das Herz)*
- *Madonna*
- *Peer Gynt*
- *Rouge et Noir*
- *Diorama Exhibition Poster*
- *In the Man's Brain (Reclining Woman)*
- *Alpha and Omega*
- *Alpha's Death*
- *Alpha's Despair*
- *Alpha's Offspring*
- *The Bear*
- *Moonrise*
- *Omega and the Donkey*
- *Omega and the Flower*
- *Omega and the Swine*
- *Omega Cries*
- *Omega's Death*
- *Omega's Eyes*
- *Omega's Flight*
- *Serpent Being Killed*
- *Table of Contents*
- *Text Page*
- *The Cloud (The Serpent/The Shadow)*
- *The Forest*
- *Tiger*
- *Tiger and the Bear*
- *Title Page*
- *Vignette: Amaryllis*
- *Vignette (Satyr)*

- *The Suicide*
  - *The Brooch (Eva Mudocci)*
  - *Funeral March*
  - *Emanuel Goldstein in a Hat*
  - *The Urn*
  - *In the Land of Crystals*
  - *The Square in Berlin. Potsdamer Platz*
  - *Attraction II*
  - *Crowds in a Square*
  - *Stéphane Mallarmé*
  - *Mystical Shore*
  - *Melancholy*
  - *Stanislaw Przybyszewski*
- Washington
- Seattle, Seattle Art Museum
- Georgia O'Keeffe: Abstract Variations*
- March 5, 2020–September 7, 2020
- Georgia O'Keeffe
- *No. 20—From Music—Special*
  - *Black White and Blue*

This year was especially significant for loans due to the impact that the COVID-19 pandemic had on museum closures, which disrupted exhibitions here and abroad. The National Gallery was able to assist in extending loans to the sites listed here so that exhibitions could once again be enjoyed by visitors when museums were able to reopen.

#### FRANCE

Paris, Musée national d'art moderne,  
Centre Georges Pompidou  
*Christo et Jeanne-Claude. Paris!*  
July 1, 2020–October 19, 2020  
Christo

- *Package 1961*

#### ITALY

Bologna, Palazzo Fava  
*The Rediscovery of a Masterpiece*  
May 18, 2020–January 10, 2021  
Francesco del Cossa

- *Saint Florian*
- *Saint Lucy*
- *The Crucifixion*

Milan, Palazzo Reale  
*Georges de La Tour. L'Europa della luce*  
February 7, 2020–September 27, 2020

Georges de La Tour

- *The Repentant Magdalen*

Rome, Scuderie del Quirinale

*Raffaello 1520–1483*

March 3, 2020–August 30, 2020

Raphael

- *The Alba Madonna*
- *A Marble Horse on the Quirinal Hill [recto]*

## SWITZERLAND

Bern, Zentrum Paul Klee

*Lee Krasner: Living Colour*

February 7, 2020–August 16, 2020

Circulated to: Museo Guggenheim Bilbao

September 18, 2020–January 10, 2021

Lee Krasner

- *Imperative*

## UNITED STATES

California

San Francisco, Fine Arts Museums of

San Francisco, Legion of Honor

*James Tissot: Fashion & Faith*

October 12, 2019–February 9, 2020

Circulated to: Musée d'Orsay

June 23, 2020–September 13, 2020

James Jacques Joseph Tissot

- *Hide and Seek*

District of Columbia

Washington, Smithsonian American Art Museum

*Alexander von Humboldt and the United States:*

*Art, Nature, and Culture*

March 20, 2020–January 3, 2021

George Catlin

- *See-non-ty-a, an Iowa Medicine Man*

Frederic Edwin Church

- *Niagara*

Illinois

Chicago, The Art Institute of Chicago

*El Greco: Ambition and Defiance*

March 5, 2020–October 19, 2020

El Greco (Domenikos Theotokopoulos)

- *Saint Martin and the Beggar*

*Signs and Wonders: The Photographs of*

*John Beasley Greene*

February 8, 2020–August 10, 2020

John Beasley Greene

- *Pyramid of Cheops, Giza*

New York

New York, The Morgan Library & Museum

*The Drawings of Al Taylor*

February 21, 2020–September 13, 2020

Al Taylor

- *Hanging Puddles*

New York, Museum of Modern Art

*Judd*

March 1, 2020–January 9, 2021

Donald Judd

- *Untitled*

New York, Whitney Museum of American Art

*Vida Americana: Mexican Muralists Remake*

*American Art, 1925–1945*

February 17, 2020–January 31, 2021

William Gropper

- *Strike*

Paul Strand

- *Boy, Hidalgo*

Will Barnet

- *Vigilantes*

Aaron Douglas

- *Into Bondage*

Texas

Dallas, Meadows Museum, Southern

Methodist University

*Alonso Berruguete: First Sculptor of*

*Renaissance Spain*

September 20, 2020–January 10, 2021

Martin Schongauer

- *Death of the Virgin*

Juan de Flandes

- *The Adoration of the Magi*
- *The Baptism of Christ*

Virginia

Norfolk, Chrysler Museum of Art

*Edvard Munch and the Cycle of Life*

February 28, 2020–September 6, 2020

Edvard Munch

- *The Morning After (Der Tag danach)*
- *Geschrei (The Scream)*
- *Man's Head in Woman's Hair (Mannerkopf in Frauenharr)*
- *Cafe Bauer, Berlin*
- *Ibsen with Lighthouse (Ibsen mit Leuchtturm)*
- *Professor Jacobsen*
- *The Young Model (Das junge Modell)*
- *The Dead Lovers (Totes Liebespaar)*
- *The Maiden and the Heart (Das Madchen und das Herz)*
- *Madonna*
- *Peer Gynt*
- *Rouge et Noir*
- *Diorama Exhibition Poster*
- *In the Man's Brain (Reclining Woman)*
- *Alpha and Omega*
- *Alpha's Death*
- *Alpha's Despair*
- *Alpha's Offspring*
- *The Bear*

- *Moonrise*
- *Omega and the Donkey*
- *Omega and the Flower*
- *Omega and the Swine*
- *Omega Cries*
- *Omega's Death*
- *Omega's Eyes*
- *Omega's Flight*
- *Serpent Being Killed*
- *Table of Contents*
- *Text Page*
- *The Cloud (The Serpent/The Shadow)*
- *The Forest*
- *Tiger*
- *Tiger and the Bear*
- *Title Page*
- *Vignette: Amaryllis*
- *Vignette (Satyr)*
- *The Suicide*
- *The Brooch (Eva Mudocci)*
- *Funeral March*
- *Emanuel Goldstein in a Hat*
- *The Urn*
- *In the Land of Crystals*
- *The Square in Berlin. Potsdamer Platz*
- *Attraction II*
- *Crowds in a Square*
- *Stéphane Mallarmé*
- *Mystical Shore*
- *Melancholy*
- *Stanislaw Przybyszewski*

Washington

Seattle, Seattle Art Museum

*Georgia O'Keeffe: Abstract Variations*

March 5, 2020–September 7, 2020

Georgia O'Keeffe

- *No. 20—From Music—Special*
- *Black White and Blue*

## Extended Loans from the National Gallery Collection

All works part of the National Lending Service  
unless indicated by \*\*

### FINLAND

Helsinki, United States Embassy Residence

Mark Rothko

- *Personage Two*
- *The Pugilist*

### FRANCE

Paris, Musée du Louvre

Severo da Ravenna

- *The Christ Child*\*\*

### ITALY

Florence, Casa Buonarroti

after Michelangelo

- *Damned Soul*\*\*

Rome, United States Embassy Residence

Leon Polk Smith

- *Stretch of Black III*

Eugène Vail

- *The Flags, Saint Mark's, Venice—Fête Day*

John William Casilear

- *View on Lake George*

Mark Rothko

- *Untitled*
- *Untitled*

### SPAIN

Madrid, United States Embassy Residence

Manolo Millares

- *Cuadro 78*

Mark Rothko

- *No. 5*

### UNITED KINGDOM—ENGLAND

London, United States Embassy Residence

Sir William Beechey

- *Lieutenant-General Sir Thomas Picton*

Francis Cotes

- *Mrs. Thomas Horne*

Thomas Gainsborough

- *William Yelverton Davenport*

London, Wallace Collection

Sir Thomas Lawrence

- *Francis Charles Seymour-Conway,  
3rd Marquess of Hertford*

### UNITED STATES

Alabama

Birmingham, Birmingham Museum of Art

Anders Zorn

- *Hugo Reisinger*

California

Oakland, Oakland Museum

Mark Rothko

- *Untitled*

District of Columbia

The Library of Congress

Carl Milles

- *Head of Orpheus*

Meridian International Center

Léon Bonnat

- *Henry White*\*\*

National Museum of American History

Charles Peale Polk

- *General Washington at Princeton*

National Portrait Gallery  
Irving R. Wiles

- *Miss Julia Marlowe*
- *President Bill Clinton*

US Commission of Fine Arts  
Alice Neel

- *William Walton*

Office of Senate Leadership, United States  
Capitol

Franklin C. Courter

- *Lincoln and His Son, Tad\*\**

Office of Vice President of the United States  
John Wesley Jarvis

- *Commodore John Rodgers*

John Vanderlyn

- *John Sudam*

American 18th Century

- *Attack on Bunker's Hill, with the Burning of Charles Town*

A. Hashagen

- *Ship "Arkansas" Leaving Havana*

The White House

George Catlin

- *A Small Cheyenne Village*
- *Pawnee Indians Approaching Buffalo*
- *An Ojibbeway Village of Skin Tents*
- *Buffalo Chase*

George Peter Alexander Healy,  
after Gilbert Stuart

- *Thomas Jefferson\*\**

Attorney General  
Edward Savage

- *George Washington*

Secretary of Agriculture  
American 19th Century

- *Twenty-two Houses and a Church*

Georgia Timken Fry

- *Flock of Sheep*

American 18th Century

- *Hunting Scene with a Pond*

Administrator of the Environmental  
Protection Agency

American 19th Century

- *Abraham Lincoln*

Secretary of Housing and Urban Development  
Francesco Guardi

- *Fanciful View of the Castel Sant'Angelo, Rome*

Secretary of Health and Human Services

J. G. Tanner

- *Engagement between the "Monitor" and the "Merrimac"*

after Jean-Baptiste Greuze

- *Benjamin Franklin*

Walt Kuhn

- *Green Apples and Scoop*

Robert Salmon

- *The Ship "Favorite" Maneuvering Off Greenock*

Maurice Utrillo

- *The Pont Saint-Michel, Paris*

Secretary of the Treasury

Mark Rothko

- *No. 3*

- *Untitled*

- *Olympian Play*

- *Untitled*

- *Untitled*

- *Untitled*

Supreme Court of the United States

Chief Justice John Roberts

Gilbert Stuart

- *George Washington*

George Cuitt the Younger

- *Easby Abbey, near Richmond*

Justice Ginsburg

Mark Rothko

- *Untitled*

- *The Omen*

Justice Neil Gorsuch

American 19th Century

- *Liberty*



Winslow Homer

- *Sunset*\*\*

Alexander Helwig Wyant

- *Peaceful Valley*

George Catlin

- *Battle between the Jicarilla Apaches and Camanchees*
- *Making Flint Arrowheads—Apaches*
- *Falls of the Snake River*

Charles Henry Granger

- *Muster Day*

Justice Kavanaugh

Thomas Chambers

- *New York Harbor with Pilot Boat “George Washington”*

Thomas Chambers

- *Boston Harbor*

Justice Kennedy

Berthe Morisot

- *Girl in a Boat with Geese*

C. Gregory Stapko

- *A View of Salisbury Cathedral*\*\*

John Trumbull

- *Alexander Hamilton*\*\*

Justice Sotomayor

Mark Rothko

- *Untitled (subway)*

- *Untitled*

- *Untitled (woman in subway)*\*\*

Maryland

Solomons, Annmarie Garden Sculpture Park & Arts Center

James Rosati

- *Untitled*\*\*

George Rickey

- *Cluster of Four Cubes*\*\*

Missouri

Kansas City, The National World War I Museum

Robert Ingersoll Aitken

- *Lambs Club Memorial*\*\*

Pennsylvania

Philadelphia, Philadelphia Museum of Art

Anton Raphael Mengs

- *The Adoration of the Shepherds*\*\*

Virginia

Fairfax, George Mason University

Lila Pell Katzen

- *Antecedent*

Alfredo Halegua

- *America*

Charlottesville, The Fralin Museum of Art,

University of Virginia

Jean Arp

- *Oriforme*\*\*

## Library Loans

UNITED STATES

District of Columbia

Washington, Smithsonian American Art Museum

*Alexander von Humboldt and the United States: Art, Nature, and Culture*

March 20, 2020–August 20, 2020

- *Catlin’s Notes of Eight Years’ Travels and Residence in Europe with his North American Indian Collection*

Washington, The Phillips Collection

*Bonnard to Vuillard: The Intimate Poetry of Everyday Life, The Nabi Collection of Vicki and Roger Sant*

October 26, 2019–January 26, 2020

- *Traite de lithographie artistique*

Washington, The National Museum of Women in the Arts

*Women Artists of the Dutch Golden Age*

October 11, 2019–January 2, 2020

- *De groote schouburgh der nederlandsche konstschilders en shilderessen*

# National Gallery of Art



## Gifts and Donors

2020 Annual Report

The support of the federal government and private sector enables the National Gallery to fulfill its mission to serve the nation by welcoming all people to explore and experience art, creativity, and our shared humanity. While the federal government provides an annual appropriation for the National Gallery's operation and maintenance, works of art in the collection, the two buildings, and the sculpture garden are made possible through private gifts, as are numerous educational and scholarly programs. The National Gallery extends its gratitude to both the federal government and the many generous donors listed here, who made gifts during fiscal year 2020. These private contributions have allowed the National Gallery to enhance its art collections, build its library holdings, present special exhibitions, undertake conservation and research, offer comprehensive educational initiatives, and pursue scholarly endeavors. Thanks to the ongoing commitment of its supporters and the federal government, the National Gallery continues to serve the American people.

## **Mellon Challenge Endowment Grant**

The Andrew W. Mellon Foundation awarded the National Gallery of Art a grant of \$30 million in endowment funds, to be matched by \$45 million in new gifts from other donors. The National Gallery is deeply grateful to those who have contributed endowment gifts, both large and small, toward the Mellon challenge grant. This historic initiative reinforces the National Gallery's leadership role as the nation's art museum. The financial support of the donors listed here captures the spirit of generosity that created this museum for the nation and has allowed it to thrive for more than three-quarters of a century.

Anonymous (3)

Anonymous in honor of Sharon Rockefeller

Lynn K. Altman

Adrienne Arsht

Ann M. Askew

Aileen Athy

Mr. and Mrs. Frederick W. Beinecke

Mr. William S. Beinecke †

Marguerite H. Benson

John and Louise Bryson

Vincent and Linda Buonanno

Russell and Anne Byers

Mrs. William Cafritz (Buffy)

Mrs. Aldus H. Chapin †

A. James & Alice B. Clark Foundation

Thomas † and Robin Clarke

Paula Cooper and Jack Macrae

Grega and Leo A. Daly III Endowment Fund

The Dillon Fund

Patricia A. Donovan

Louisa C. Duemling

Clarence and Anne Dillon Dunwalke Trust

Mr. and Mrs. Merritt P. Dyke

Robert & Mercedes Eichholz Foundation

Marjorie and Anthony Elson

Sarah G. Epstein

Greg and Candy Fazakerley

Jean Taylor Federico

Sarajane Foster

Norma Lee and Morton Fungler

Jo Ann and Julian Ganz, Jr.

Susan and Whitney Ganz  
Professor Joseph L. Gastwirth  
Bernard and Sarah † Gewirz  
Martha Gil-Montero and Joseph A. Page  
David and Lorna Gladstone Foundation  
Lenore S. and Bernard A. Greenberg Fund  
Hakuta Family  
The Frederic C. Hamilton Family Foundation  
Dr. John C. Harbert  
The Heinz Family Foundation  
Dennis Henley and Nora Shea  
William Logan Hopkins  
John K. Hoskinson and Ana I. Fábregas  
Mrs. Amos B. Hostetter Jr.  
Gail and Benjamin Jacobs  
Pamela Jenkinson  
Mr. James A. Johnson Jr. and Mr. Frank L. Spencer  
Mrs. Linda H. Kaufman  
Judith Keenan  
Thomas and Kathleen Koepsell  
Kyle and Sharon Krause Family Foundation

Samuel H. Kress Foundation  
Jo Carole and Ronald S. Lauder  
Leonard A. Lauder  
Jacqueline Lawrence in memory of  
Leonard Silverstein  
Jacqueline and Marc Leland Foundation  
Reid and Ann MacDonald  
Mr. and Mrs. Jan W. Mares  
Jacqueline B. Mars  
Mr. and Mrs. John F. Mars  
Virginia Cretella Mars  
Mr. and Mrs. James B. Martin  
Lynne Martin  
Susan McCabe †  
The Andrew W. Mellon Foundation  
R. K. Mellon Family Foundation  
Katherine Mineka  
The Honorable Alfred H. Moses and  
Ms. Fern M. Schad  
George L. Ohrstrom Jr. Foundation  
Alan and Marsha Paller

Malcolm and Pamela † Peabody  
William and Karen Prezant  
Prince Charitable Trusts  
Mr. Robert C. Rea  
Lola C. Reinsch  
Sarah Beinecke Richardson and Craig Richardson  
in honor of Frederick Beinecke  
Toni A. Ritzenberg †  
Sharon Percy Rockefeller and  
John D. Rockefeller IV  
Mr. † and Mrs. Robert M. Rosenthal  
The Honorable Secretary of Commerce  
and Ms. Hilary Geary Ross  
David M. Rubenstein  
Edmond J. Safra Foundation  
Victoria † and Roger Sant  
Denise and Andrew Saul  
Leonard and Elaine Silverstein †  
Hedrick Smith and Susan Zox-Smith  
Robert H. Smith Family Foundation  
Barbara Spangenberg  
The Sperry Fund

Benjamin F. and Jane F. Stapleton

Elizabeth and George Stevens Jr.

Eileen and Michael Tanner

Christiane and James Valone

Christopher V. Walker

Dr. and Mrs. Ken Walker

Mrs. Mary Weinmann †

Professor John Wilmerding

## **Gifts to the National Gallery of Art**

(October 1, 2019–September 30, 2020)

### **Gifts of Art**

The National Gallery's collection is the result of private generosity. Unlike other national museums throughout the world, the National Gallery receives no government funds for the acquisition of art. Works of art were added to the National Gallery's collection in fiscal year 2020 through the generosity of the friends listed here.

Anonymous

Ann and Tom Barwick Family Collection

C. G. Boerner LLC

Eileen and Michael Cohen

Nico and Bowie Cord

Thomas A. Cox †

Virginia Dwan

The Epstein Family Collection

Jeffrey Fraenkel and Alan Mark

Joseph Goldyne

Susan L. Hill in honor of curator Gregory Jecmen

Lynne and Joseph Horning

Timothy and Suzanne Hyde

Robert and Elizabeth Kellogg

Elizabeth Kessenides

Kenneth and Amy Eisen Krupsky, from the collection of Charles and Sylvia Eisen

Larissa Leclair

Ira M. Lowe †

The Matthiesen Gallery and John Lishawa Ltd. in memory of E. A. Carmean (1945–2019) and Philip Conisbee (1946–2008), both curators at the National Gallery of Art

Michael Mattis and Judith Hochberg

Robert B. Menschel

Ann and Matthew Nimetz

John O'Brien, in honor of Meg Grasselli, for a long friendship

Stephen and Claudine Ostrow

In memory of Alan Ostrow

In memory of J. Donald Ostrow

In memory of Herman Ostrow, MD

The Irving Penn Foundation, in Recognition of Constance McCabe's Achievements in Photograph Conservation

Mr. and Mrs. John E. Pflieger

Tony Podesta Collection in honor of Earl A. Powell III, Director of the National Gallery of Art (1992–2019)

Doris and Dr. Gerd Presler, in honor of Andrew Robison

Christopher Read and Chris Vein

Margaret and Gary M. Reiner

Joseph Rodota

Leslie, Judith, and Gabrielle Schreyer

In memory of Robert L. Shalkop, Curator and Museum Director

Connie Simmons and James D. Krugman

Odyssia Skouras

Mary and Dan Solomon

Stephen G. Stein

Erika and John Toussaint

Charles van Horne on behalf of the family of Toni von Horn

Isabell VanMerlin

Dorothy and Herbert Vogel Collection

John Wilmerding

Christopher and Beverly With in memory of Karl and Gerda With

William J. Wyer

In memory of Adolph and Jeanne Zelnick

In memory of Yves Zelnick

### **Library Gifts**

The following individuals and institutions made significant gifts to the National Gallery of Art Library and its image collections department in fiscal year 2020:

William Craft Brumfield

Charlie P. Coffey

Gigi Richter Crompton

Annette P. Cumming

Judy Dater

Stephen Estrow

William and Abigail Gerdts

Christine Kermaire

Kate Klippensteen

Molli E. Kuenstner

Gregory P. J. Most

Thomas A. O'Callaghan

Wanda Reif

Helena Wright

### **Corporate Gifts**

The National Gallery is grateful to the following national and international corporations and foundations for their generous support in fiscal year 2020.

Bank of America

Bank of America Foundation

BP America

### **Individual and Foundation Gifts**

Gifts of \$1,000 or more for art acquisition, special exhibitions, education, outreach, conservation, research initiatives, and unrestricted support were received from the following generous donors during fiscal year 2020:

\$1,000,000 or more

A. James & Alice B. Clark Foundation

The Lee and Juliet Folger Fund

David M. Rubenstein

Victoria † and Roger Sant

\$500,000–\$999,999

Louisa C. Duemling

Robert and Arlene Kogod

Clarice Smith

Michelle Smith †

Robert H. Smith Family Foundation

\$250,000–\$499,999

The Frederic C. Hamilton Family Foundation

Samuel H. Kress Foundation

Jacqueline B. Mars

Arnold and Augusta Newman Foundation

Sharon Percy Rockefeller and John D.  
Rockefeller IV

Terra Foundation for American Art

\$100,000–\$249,999

Anonymous

The Ahmanson Foundation

Mr. and Mrs. Frederick W. Beinecke

Vincent and Linda Buonanno

The Buffy and William Cafritz Family  
Foundation, Inc.

The Morris and Gwendolyn Cafritz Foundation

Robert & Mercedes Eichholz Foundation

Bernard and Sarah † Gewirz

Estate of Robert Alan Johnson

Gerard B. Lambert Foundation

Virginia Cretella Mars

Alan and Marsha Paller

Emily and Mitchell Rales

Denise and Andrew Saul

The Sperry Fund

Trellis Fund

Christiane and James Valone

Mallory and Diana Walker

\$50,000–\$99,999

Howard and Roberta Ahmanson

Debra and Leon Black

John and Louise Bryson

Charina Endowment Fund

Estates of William Logan Hopkins and  
Richard B. Anderson

Gail and Benjamin Jacobs

Kyle and Sharon Krause Family Foundation

W. Bruce and Delaney H. Lundberg

Reid and Ann MacDonald

Howard and Nancy Marks

Robert B. Menschel and the Vital Projects Fund

Park Foundation

Mr. and Mrs. B. Francis Saul II

Mr. and Mrs. Albert H. Small

Eugene V. and Clare E. Thaw Charitable Trust

Mr. and Mrs. J. Bruce Whelihan

Wyeth Foundation for American Art

\$25,000–\$49,999

Anonymous

Kaywin Feldman

Ruth Geraldine Hofmeister Living Trust

Heather and Jim Johnson

Nion McEvoy

R. K. Mellon Family Foundation  
Scott Nathan and Laura DeBonis  
George L. Ohrstrom Jr. Foundation  
James D. and Kathryn K. Steele

\$10,000–\$24,999

Katherine M. B. Berger  
Bernstein Family Foundation  
Buffy Cafritz  
C.A.L. Foundation, Inc.  
The Max and Victoria Dreyfus Foundation  
Mr. and Mrs. Merritt P. Dyke  
Peter Edwards and Rose Gutfeld  
Samuel Freeman Charitable Trust  
Gregory and Aline Gooding  
The Gottesman Fund in memory of  
Milton M. Gottesman  
Embassy of Italy  
Pamela Jenkinson in honor of Earl A. Powell III  
Johnson Family Foundation  
Mrs. Linda H. Kaufman

Henry B. and Jessie W. Keiser Foundation, Inc.  
David Knaus  
Thomas and Kathleen Koepsell  
Alexander M. and Judith W. Laughlin  
Phillip and Edith Leonian Foundation  
The David Minkin Foundation  
Ms. Margaret B. Parsons  
The Honorable Scott H. Peters and  
Ms. Lynn Gorguze  
Quadrangle Development Corporation  
Leslie, Judith, and Gabrielle Schreyer  
Dr. Shailendra S. Vaidya  
The Tulgey Wood Foundation

\$1,000–\$9,999

Anonymous  
Mr. and Mrs. Timothy Bass  
The Brock Foundation  
Buffy Cafritz in memory of Sarah Gewirz  
Harman Cain Family Foundation  
Norman and Carolyn K. Carr  
Chipstone Foundation

Brad Christmann and Melissa Cornwell  
Charitable Fund  
George and Susan Cohon in memory of  
Sarah Gewirz  
David Drubner in memory of Sarah Gewirz  
Mr. and Mrs. William P. Egan in memory of  
Sarah Gewirz  
Lenore England in memory of  
Patricia Goldsmith England  
Sherry and Bruce Feldman  
Randi and Bob Fisher  
Peter A. and Barbara W. Freeman  
Gamblin Artists Colors Co.  
Professor Joseph L. Gastwirth  
The Getty Foundation  
Ann and Gordon Getty Foundation  
Gilbane Building Company in memory of  
Sarah Gewirz  
Tom and Mary Gilbane in memory of  
Sarah Gewirz  
Michael A. Glass  
Henry and Alice H. Greenwald †  
Dr. John C. Harbert †



Dennis Henley and Nora Shea

Mark and Carol Hyman Fund

Ms. Nancy Itteilag and Mr. Jack Donnelly  
in memory of Sarah Gewirz

Dr. Deborah E. Jessiman and Mr. Alistair Jessiman  
in memory of Sarah Gewirz

JGB Smith in memory of Sarah Gewirz

Judith Keenan

Connie Foster King in memory of her brother  
Richard Holloman Foster

Robert and Arlene Kogod in memory of  
Sarah Gewirz

Roy Lichtenstein Foundation

Mr. and Mrs. Russell C. Lindner in memory of  
Sarah Gewirz

Robert B. Loper

Edward E. MacCrone Private Foundation

Magruder & Associates, PC in memory of Sarah  
Gewirz

Mr. Kerry James Marshall and Ms. Cheryl L. Bruce

Jeanine L. Matte

The Honorable John L. Mica and Mrs. Mica

Anita and Sam Michaels in memory of  
Sarah Gewirz

Katherine Mineka

Lucy C. Mitchell

C. Jay Moorhead Foundation

Matthew and Ann Nimetz

William and Karen Prezant

Richard Price and Yung Chang

Dr. and Mrs. Jerold Principato in memory of  
Sarah Gewirz

Quadrangle Development Corporation in  
memory of Sarah Gewirz

Mr. Jan Paul Richter and Ms. Ellen von  
Seggern-Richter

Ms. Susan Sippelle in memory of Sarah Gewirz

St. Andrews Foundation in memory of Sarah  
Gewirz

Ms. Linda Stone

Mallory and Diana Walker in memory of  
Sarah Gewirz

Wilkes Artis Chartered Foundation in memory of  
Sarah Gewirz

Charles C. and Helen Wilkes

## **The Collectors Committee of the National Gallery of Art**

The Collectors Committee serves a vital role in broadening the scope of the National Gallery's modern collection. Committee members provide invaluable support with their annual gifts of \$20,000, \$40,000, and more for the acquisition of modern art.

### **Chair**

Denise Saul

### **Members**

Anonymous

Howard and Roberta Ahmanson

Adrienne Arsht

Christine and Bill Aylward

Anne T. and Robert M. Bass

Brendan and Helen Bechtel

Calvin and Jane L. Cafritz

Constance R. Caplan

Joseph M. Cohen

Edwin L. Cox †

Mrs. Doris Fisher  
Norma Lee and Morton Fungler  
Nancy and Carl † Gewirz  
Agnes Gund  
Mr. and Mrs. Andrew S. Gundlach  
Mrs. Frederic C. Hamilton  
Mr. and Mrs. Richard C. Hedreen  
The Kend Family Fund  
Susan and John Klein  
Robert and Arlene Kogod  
Jill H. Kramer  
Kyle and Sharon Krause  
Joan and David Maxwell  
Cassandra Mellon Milbury  
Mary V. Mochary  
Mary and John Pappajohn  
Prince Charitable Trusts  
Emily and Mitchell Rales  
Sharon and John D. Rockefeller IV  
Meredith and Brother Rutter  
Roger Sant

Louisa Stude Sarofim  
Denise and Andrew Saul  
Jon Shirley  
Michelle Smith †  
Roselyne Chroman Swig  
Laurie M. Tisch Illumination Fund

## **The Exhibition Circle of the National Gallery of Art**

The National Gallery wishes to thank the members of The Exhibition Circle for their generous support at the level of \$20,000 or more, which provides funding for special exhibitions each year.

Mr. and Mrs. Frederick W. Beinecke  
Evelyn T. Brandt  
Carol and Landon Butler  
Ron and Barbara Cordover  
Irwin and Ginny Edlavitch  
Dr. Mark Epstein and Amoretta Hoeber  
Michael Klein and Joan Fabry  
Shannon Fairbanks  
Greg and Candy Fazakerley  
Ms. Denise Gwyn Ferguson  
The Lee and Juliet Folger Fund  
C. Boyden Gray  
Newman T. Halvorson Jr.  
Mrs. Amos B. Hostetter Jr.  
Mr. and Mrs. Reuben Jeffery III  
Ann and Mark Kington

Betsy Scott Kleeblatt  
Robert and Arlene Kogod  
Jo Carole and Ronald S. Lauder  
Leonard and Judy Lauder Fund  
Thelma Z. Lenkin  
Larry and Dee Levinson  
Mr. and Mrs. Richard E. Marriott  
Virginia Cretella Mars  
Scott Nathan and Laura DeBonis  
Prince Charitable Trusts  
Roger Sant  
Mr. and Mrs. B. Francis Saul II  
Michelle Smith †  
Dr. Abigail Spangler  
Shannon and Bennett C. Stichman/Stichman  
Family Foundation  
Adele M. Thomas Charitable Foundation, Inc.  
Alan M. and Nathalie P. Voorhees Fund

## **The Circle of the National Gallery of Art**

The National Gallery extends thanks to the members of The Circle for their generous annual gifts of \$1,000, \$2,500, \$5,000, or \$10,000 or more, which provide unrestricted funding for a range of activities throughout the National Gallery.

### **Chair**

Betsy Scott Kleeblatt

### **Patron Members**

(\$10,000 and Above)

Anonymous (2)

Gay and Tony Barclay

Terri and Tom Barry

Mr. and Mrs. Douglas J. Besharov

Marc H. and Vivian S. Brodsky

Carter and Melissa Cafritz Charitable Trust

Catto Charitable Foundation

Giuseppe and Mercedes Cecchi

Ellen MacNeille Charles

Judy and Richard Cohen

Lavinia M. Currier

Anne and Gus Edwards

The Roger S. Firestone Foundation

Nancy M. Folger

Dr. Margaret A. Goodman

Mrs. Barbara K. Gordon

Elizabeth Marsteller Gordon

Mr. and Mrs. Temple Grassi

The Heinz Family Foundation

Lynne and Joe Horning

Mrs. Linda H. Kaufman

Lee G. Kirstein

Judy and Peter Blum Kovler Foundation

Alexander M. and Judith W. † Laughlin

LaSalle D. Leffall III

The Lemon Foundation

Edward Lenkin and Roselin Atzwanger

Sueyun Locks

Richard and Ronay Menschel

The Paley Family

Dr. James D. Parker

Jackie Peebles

Jeanne W. Ruesch  
Ms. Patricia B. Sagon  
Jacquelyn and William Sheehan  
Ellen and Gerry Sigal  
Benjamin F. and Jane F. Stapleton  
Dr. Barry and Mrs. Evelyn Strauch  
Mallory and Diana Walker  
Frederica Wheeler and Charles E. Johnson  
Ken and Dorothy Woodcock

**Sustaining Members**

(\$5,000–\$9,999)

Leslie Anderson  
Aileen Athy  
Jamie Baldinger  
Miriam and Eliezer Benbassat  
Grace and Morton Bender  
Katherine M. B. Berger  
Sylvia Blake  
Barbara Boggs  
Marshall and Anne Brachman  
Andrew Brown

Elizabeth C. Burke  
M. Challinor and H. Richardson  
Robin Rowan Clarke  
Andrea B. Currier  
Mr. and Mrs. Gary Davis  
Dr. Joseph P. DiGangi  
The William H. Donner Foundation  
Philip G. Dufour and Todd S. Andochick  
Elizabeth W. Edgeworth  
Mrs. John Dwight Evans Jr.  
Elinor K. Farquhar  
Keith Forman and Mary Morton  
Dale and Suzi Gallagher  
Professor Joseph L. Gastwirth  
The Honorable Joseph Gildenhorn and  
Alma Gildenhorn  
Martha Gil-Montero and Joseph A. Page  
Graham Holdings Company  
Patrick W. and Sheila Proby Gross  
Mimi and Peter Haas Fund  
Gertraud Hechl

Patti and Mitchell D. Herman  
Mr. and Mrs. Richard Hinds  
William A. Homan III  
Mrs. Sherrill M. Houghton  
Mr. Clark F. Hoyt and Ms. Linda Kauss  
The Fannie and Stephen Kahn Charitable  
Foundation  
Thomas S. Kenan III  
Mr. and Mrs. Jon Landau  
Jack and Betty Lou Ludwick  
John and Mary Lee Malcolm  
Jim and Tracy Millar  
Joan and Dan Mulcahy  
Diane A. Nixon  
Dr. Sushma Palmer  
Whayne and Ursula Quin  
Jacqueline Rizik  
Mrs. Thomas P. Roddy  
Roberta O. Roumel  
Mr. and Mrs. Thomas D. Rutherford Jr.  
Ms. Amy Sabrin and Mr. Evans Witt

Julie Schauer  
Mr. and Mrs. Charles C. Shelleman Jr.  
Mr. and Mrs. Robert Bland Smith  
David and Marcia Speck  
Eileen and Michael Tanner  
Emily and Frank Vogl  
Virginia A. Weil  
Marvin F. Weissberg  
Professor John Wilmerding

**Supporting Members**

(\$2,500–\$4,999)

Anonymous (6)  
Mr. and Mrs. Timothy Dees Adams  
Carolyn Small Alper †  
William and Sunny Alsup  
Ruth and Sam Alward  
Leslie S. Ariail  
Joseph Asin and Beryl Gilmore  
Ann M. Askew  
Andrew Athy Jr.  
Dr. and Mrs. Maxwell Barus

Dr. Frances F. L. Beatty and Mr. Allen R. Adler  
Mr. and Mrs. James R. Beers  
Marguerite H. Benson  
Richard Ben-Veniste and Donna Marie Grell  
Roberta Matthews Bernstein  
Ambassador Stuart and Wilma Bernstein  
Mr. Thomas T. Bishop and Mr. Clifford L. Gregory  
Miss Elizabeth S. Bizic  
Mr. and Mrs. James I. Black III  
Ms. Elizabeth I. Board and Mr. Robert C. Hines  
Mrs. Mary E. Bork  
Robert and Hilary Brandt  
Joan and Jack Bray  
Robert D. Broeksmit and Susan G. Bollendorf  
Jere and Bonnie Broh-Kahn  
Ira Don Brown  
Mr. and Mrs. Vincent Browning  
Mr. and Mrs. Wiley T. Buchanan III  
Frances Ann Bufalo  
The Honorable John E. Chapoton and  
Mrs. Chapoton

Lindsay Kudner Coates  
Ana and Paul Collins  
Mr. and Mrs. Brian Conboy  
Warren and Claire Cox  
Mr. Dale Dean  
Dr. Jean Karle Dean  
The Charles Delmar Foundation  
John and Anne Dickerson  
Ginger H. and H. Richard Dietrich III  
Dean and Margarita Dilley  
Edith R. Dixon  
Mr. and Mrs. Merritt P. Dyke  
Marjorie and Anthony Elson  
Mr. † and Mrs. Edward L. Emes Jr.  
Mr. and Mrs. James Evans  
Frank and Mary Fahrenkopf  
Peter A. and Barbara W. Freeman  
Friends of Florence  
Mr. and Mrs. David Morgan Frost  
Anne and Paul Gambal

David L. Gardner, MD, and Pete Williams  
Mr. and Mrs. Michael G. Gibby  
Thomas Gibian and Christina Grady  
Elisa and Kenneth Glazer  
Mrs. Mary Granger  
David Granite, MD, and Mary Lou  
Oster-Granite, PhD  
Richard and Mary L. Gray Foundation  
Henry Greenewalt  
Nicole Alfandre Halbreiner  
Mrs. Frederic C. Hamilton  
Kate Haw  
Robert and Deborah Hefferon  
Mr. and Mrs. Robert N. Herman  
Ms. Maria C. Higgins  
Anne Marie and Bill Hinman  
John † and Dori Holaday  
John K. Hoskinson and Ana I. Fábregas  
Mrs. Dirk C. Jecklin  
Pamela Jenkinson  
Mrs. Ford Kalil

Sheldon and Audrey Katz  
Mrs. Cyrus Katzen  
Dr. and Mrs. Jay Katzen  
Lynn and Taylor Keith  
Paul Killian and Carole Goodson  
Robin and Carol King  
Michael W. Kolakowski  
David A. Lamdin  
Burks B. Lapham  
Leon Fund of The Community Foundation  
Serving Richmond and Central Virginia  
Elissa Leonard and Jay Powell  
Herb and Dianne Lerner  
Rob Liberatore and Debra Kraft  
June and Jerome Libin  
Dr. and Mrs. Keith M. Lindgren  
Tamera Luzzatto and David Leiter  
William and Barbara Lynch  
Dr. and Mrs. † Michael Maccoby  
Mr. and Mrs. Worth D. MacMurray  
Wendy W. Makins

Mr. and Mrs. Toshi Masuoka  
Tim and Jane Matz  
Dr. Lucy McBride and Mr. Thad McBride  
Dennis K. McClellan and Steven E. Deggendorf  
Anne and Bill McDow  
Mr. and Mrs. Allan D. McKelvie  
Irma Jean and John F. McNelia  
Laurel and Robert Mendelsohn, MD  
Ms. Sabina Menschel and Mr. Edward Priestap  
A. Fenner Milton  
Ms. Sharon Moody and Mr. Kenneth Kent  
Mr. and Mrs. F. Joseph Moravec  
Bailey Morris-Eck †  
Sharon and Michael Nemeroff  
Mr. and Mrs. Robert B. Newlin  
Dane Nichols  
Akemi Nishida and S. Paul Selavko  
Jeffrey Nuechterlein  
John and Leslie Oberdorfer  
Mike and Patty Orfini  
Mr. and Mrs. Gerald Petitt

Mr. and Mrs. John E. Pflieger Jr.  
Malcolm and Margaret Pfunder  
Mr. David C. Pierce  
Sydney M. Polakoff and Carolyn Goldman  
The Honorable Stephen W. Porter † and  
Mrs. Susan Porter  
Nancy Regan  
Lisa and Lacy Rice  
Ms. Cary Ridder and Mr. David Alberswerth  
Douglas and Katherine Rigler  
Molly and Rick Rolandi  
Ms. Margaret Ross  
James J. Sandman and Elizabeth D. Mullin  
Mr. Christopher M. Schroeder and  
Ms. Alexandra H. Coburn  
Ryan and Cindy Schwarz  
Judy and Jerry Shulman  
Sylvia and David Silver  
Howard and Page Smith  
Mr. and Mrs. T. Eugene Smith  
Dick and Katie Snowdon

Barbara Spangenberg and Nina Mast  
Mrs. Elizabeth Steuart-Kret and  
Mr. Gary Arthur Kret  
Mrs. Richard L. Storch  
Elizabeth Pendelton Streicher  
Mr. and Mrs. Donald Sundue  
Michele and Glenn Sutton  
Ms. Laura Symcak and Ms. Joanne Mikula  
Ms. Barbara H. Szoradi  
Chandler and Paul Tagliabue  
Mrs. Lewis Raynham Townsend  
Emily and Antoine van Agtmael  
Victoria and Michael Vergason  
The Honorable Jenonne Walker  
Mr. John W. Warner IV  
Maria Elena Weissman  
Mr. and Mrs. Dennis Weitzel  
The Honorable E. Allan Wendt and  
Ms. Que D. Nguyen  
Natalie Wilensky and Robert Bellinger  
Charles C. and Helen Wilkes

Dr. and Mrs. Jon Willen  
Elsa B. Williams  
Edwin and Kathe Williamson  
Ms. Diane Wood  
Mr. Steven J. Wunder and Mr. Rod Hastie  
Lenore G. Zinn

**Tower Project Members**  
(\$2,500 and Above)

Anonymous  
Ms. Dianne Adelberg  
Jamie Baldinger  
Brendan and Helen Bechtel  
Dr. and Mrs. Andrew Bernat  
Miss Elizabeth S. Bizic  
Martha Blalock and Christine L. Delucchi  
Mr. and Mrs. Jason Burnett  
Joan Danziger  
Dr. Joseph P. DiGangi  
Charles and Lisa Claudy Fleischman  
Howard and Shirlee Friedenber

Mr. and Mrs. Carter Griffin  
Ms. Ragnhild Handagard and Dr. Andy Ozment  
Ms. Nancy Hirshbein and Mr. Robert Roche  
Kimberly Hoover and Lynn Hackney  
Mr. and Mrs. Russell Katz  
Gail A. Lione and Barry L. Grossman  
James A. and Marsha Perry Mateyka  
Ms. Sophia McCrocklin and Mr. William Isaacson  
Mark and Melissa Myers  
Cheryl G. Numark  
Mr. Robert C. Rea  
Mr. and Mrs. Marc Salama-Caro  
Jack Shainman  
Paul So

**Contributing Members**

(\$1,000–\$2,499)

Anonymous (5)  
Ms. Ruth Abrahams  
Mr. and Mrs. Dana T. Ackerly II  
Mr. and Mrs. Mario A. Aguilar  
Ross and Judy Ain

Drs. Joseph and Seena Aisner  
Clement and Sandra Alpert Designated  
Endowment Fund  
Mr. and Mrs. Robert Anderson  
Robert and Marcia Anderson  
Tippen and Andy Anderson  
Ms. Bentley R. Andrews  
Professor Judith Areen and Mr. Richard Cooper  
Linda Arret  
Hank and Joanne Asbill  
Allie and Ellen Ash  
Lila Oliver Asher  
Anne-Lise Auclair-Jones and Hal Jones  
Florence Auld and Frank C. Marshall  
Thayer and Kevin Baine  
Barbara Baker  
D. James Baker and Emily Lind Baker  
Marion Scattergood Ballard  
Mr. and Mrs. Michael Baly III  
Mrs. Karen Barker  
Liz Barratt-Brown and Bos Dewey

Mary and Ed Bartlett  
Ed and Susan Basile  
Nathan and Leslie Bayer  
Mr. and Mrs. Dennis Bechara  
Mr. Carl G. Becker and Mrs. Christine Becker  
John and Priscilla Becker  
Mr. and Mrs. William H. Becker  
Donna and Burkey Belser  
Elizabeth R. Benson  
The Honorable Kenneth E. Bentsen Jr. and  
Mrs. Bentsen  
Kathleen Bergen and Alexander Bastos  
Dr. and Mrs. David Bernanke  
Mark Betts and Shelley Slade  
Mr. and Mrs. † Albert J. Beveridge III  
Gene Bialek and Arlene A. Brown  
Elaine and Richard Binder  
Richard and Suzanne Bissell  
Deborah Blessing  
Dr. Helen E. Blumen and Mr. Jan P. Acton  
Countess Clarissa Bonde



Kathy Borrus	Ms. Mary Ann Carey	Mr. Brendan Coleman
Blair and Josh Bourne	Mr. and Mrs. Stephane Carnot	Cindy and Rusty Conner
Dr. Rosemary T. Bowes	Ms. Carol Laikin Carpenter	Mr. and Mrs. Wallace Cooney
Susan Boyd	Mrs. Keith Armistead Carr	Dr. and Mrs. John Cooper
Mary Susan Bradshaw and Gerald B. Kauvar	Mr. and Mrs. Robert O. Carr	Tom and Dillon Costa
Charles and Maureen Brain	Julie D. Carter and James M. Roberts	Mr. and Mrs. Robert Craft
Edith H. Brewster	Henry and Diana Cashen	Teresa Yancey Crane
Suzanne S. Brock	Carolyn Cason	Ms. Olivia Crudgington
Dr. Peter F. Bross	Major General and Mrs. George Cates	Clare Cushman and Amédée Prouvost
Elizabeth and Ben Brown	Faya Causey	Mrs. Stuart C. Davidson
Mr. and Mrs. Andrew Brown	Ms. Cynthia Chase	Donn and Sharon Davis
Mr. and Mrs. Andrew Brown	Helen and Craig Chason	Philip and Sara Davis
Mr. and Mrs. Patrick J. Browne	Kyra Cheremeteff and Thomas W. Richardson	The Honorable Whitney Debevoise and Mrs. Debevoise
Mr. and Mrs. John G. Buchanan III	Dr. and Mrs. Alexander C. Chester	Alexandra D. de Borchgrave
Susan Buffone	Ms. Tracy Church and Mr. Dominic Mancini	Dr. Morgan D. Delaney and Osborne Phinizy Mackie
Leslie Buhler and Robert Berendt	Kate Clark and Miles Carlisle	Joy de Ménil and Laird Reed
Janet C. Bullinger	Mr. Larry Clark	Mr. and Mrs. Brian Detter
Mr. and Mrs. C. Michael Buxton	Mr. and Mrs. Brad Coburn	Mr. and Mrs. James F. Dicke II
William E. Cain and Barbara Harman	Robert M. Coffelt Jr.	Mrs. C. Douglas Dickerson Jr.
The Honorable John Thiers Calkins	Bonnie and Louis Cohen/Rubenstein Charitable Foundation	
Dorothy A. Canter		

Carole Dickert-Scherr and Jacob Scherr

Allison and Robert DiNardo

Doris Dixon

Ms. Phuong-Hoa Do and Mr. Robert Cole

John and Joanna Driggs

Mr. and Mrs. Larry D. Droppa

Sandra Dugoff and Richard Geltman

Mr. and Mrs. F. John Duncan Jr.

Mr. Joseph C. Dunn and Mr. Gustavo A. Ruiz

Ms. Raquel Dunning

Becky and Alan Dye

E & B Family Trust

Mr. and Mrs. LeRoy Eakin III

Ms. Laurie Effron and Mr. John L. Goodman

Ms. Catherine B. Elwell

Ms. Claire Emory

Sarah C. Epstein and Joseph P. Junkin

Richard and Sibyl Erdman

Mrs. Rodney E. Eyster

Mr. and Mrs. J. Michael Farrell

Mr. and Mrs. Charles J. Farver

Myrna L. Fawcett

Reed and Elizabeth Fawell

Jean Taylor Federico

Mr. and Mrs. Jeffrey D. Fischer

Mr. and Mrs. William Fish

Leslie and Tony Fitch

Richard Flax, MD, and Katherine Alley, MD

Ms. Gail S. Fleder

Barbara G. Fleischman

Col. C. Ray Flynn, USAF (retired), and  
James M. Shamberger

Eleanor M. Forrer

Florence Bryan Fowlkes

Ann H. Franke and Daniel J. Alpert

Pam Davis Friedler

Gay Friedmann

Rick and Barbara Frisbie

James T. Fuller III and Catherine T. Porter

Caroline D. Gabel

Mr. David Gallalee

Margaret and David Gardner

Diana and Bill Garner

Mary Cox Garner

Mr. and Mrs. Michael C. Gelman

Epstein Becker & Green/The Honorable  
Stuart M. Gerson

Steven B. and Katrina H. Gewirz

Ann Gilbert

Ms. Lise Gladstone

Denise and Peter Glassman

Marilyn and Michael Glosserman

Mary Anne Goley

Lucile M. and Jack B. Gordon

Dr. Anita F. Gottlieb

Mr. and Mrs. Seth Grae

Ms. Mary Graham

Oliver and Catherine Grant

Alexandra and John Graubert

Dr. Brad Gray and Ms. Helen Darling

Dr. Lawrence Gray

William S. and Betty K. W. Greenberg

Mr. Vincent J. Griski and Mr. Cameron W. Knight

Nina B. Griswold	Mr. and Mrs. Stephen A. Hopkins	Ms. Diana King and Mr. Larry J. West
Mrs. Corbin Gwaltney	Charles Horn and Jane Luxton	Alex and Adria Kinnier
Jill and Ridge Hall	Sari Hornstein	Michael and Evelyn Kitay
Leda McIntyre Hall	Mr. and Mrs. Outerbridge Horsey	Mr. and Mrs. Roman Knysh
Ms. Linnea Hamer	Mr. and Mrs. James Ned Horwood	Starr Kopper
Priscilla and Paul Hanley	Sharon and Peter Hubley	Mr. and Mrs. Daniel Korengold
Ms. Tamzin T. Harding	Robert and Elizabeth Huffman	Matt Korn and Cindy Miller
Ms. Althea Harlin and Mr. Peter Ross	Mr. and Mrs. William K. Ince	Patricia and John Koskinen
John and Gail Harmon	Mr. and Mrs. William A. James	Stephen P. Koster, Esq.
The Honorable William Harrison and Ms. Wendy Pangburn	Mr. and Mrs. E. Stewart Jeffries	Audrey and Kenneth Kramer
Deborah Harsch and Mark Colley	Mr. James A. Johnson Jr. and Mr. Frank L. Spencer	Page and Kipp Kranbuhl
Mr. and Mrs. Peter D. Hart	Mr. and Mrs. Peter H. Jost	Mel and Andrea Kraus
Mr. and Mrs. Val Hawkins	Ruina W. Judd	Mr. and Mrs. Joshua Kuhnert
Ms. Linda Heinrich and Mr. Juan del Alamo	Peter J. Kadzik and Amy Weiss	Richard Landfield
Sally M. and Stephen A. Herman	Mr. and Mrs. Jim Kale	Jean and John Lange
Anita G. Herrick	Ann and Julius Kaplan	Ms. Emily Larson and Mr. Jonathan Skovholt
Isabelle "Bea" Hessick	Sally B. Kaplan	Ms. Dina R. Lassow
Michelle and Peter High	Dr. Sangeeta Kaushik and Dr. Timothy Bhattacharyya	Virginia Lee
J. Catherine Hirsch	Carol W. Kelley	Mr. and Mrs. Lewis Leibowitz
Christian and Nora Hohenlohe	Jim and Andrea Kiernan	Mr. and Mrs. Michael Leiter

Jacqueline and Marc Leland Foundation	Mr. and Mrs. Jan W. Mares	Ms. Margaret McDonald and Mr. William Gruen
Terry † and Margaret Lenzner	Jennifer L. Marshall and Neal H. Flieger	John D. and Martha Benson McGrane
Ms. Marie Lerch and Mr. Jeff Kolb	Christine Martin	Ms. Elizabeth McGrath
Jennifer L. Levin	Mr. and Mrs. I. Guyman Martin III	Ms. Cynthia Adler McKee
Dr. Luna Levinson and Mr. Daniel Levinson	Harry and Judith Martin	The Honorable Roderick R. McKelvie and Ms. Claire M. McCarthy
Leon Levy Foundation	Mr. and Mrs. Roman Martinez	Donna C. and Thomas F. McLarty III
Mr. and Mrs. Michael M. Levy	Mr. C. Raymond Marvin	Rona and Allan Mendelsohn
Willee and H. Finlay Lewis	Mr. and Mrs. Charles Matheson	David and Anne Menotti
Bill and Betty Livingston	Mr. and Mrs. Colvin T. Matheson	Anne L. Metcalf
David Lloyd, Realtor	Roy and LeeAnn Matthews	Catie Meyer
Mandy Locke	Drs. Isaak and Deborah Mayergoyz	Salma G. Mikhail, PhD
Mr. and Mrs. Gary Lofgren	Jacquelyn G. Mayfield and Joseph B. Patuleia	Maxine Whalen Millar
Joe and Pat Lonardo	Michael and Hannah Mazer	Dennis and Patricia Miller
Charlene Longnecker and David Longnecker, MD	Mrs. Sheryl Heckler Mazzatenta	Edward and Noël Miller
Ellen Loughran, PhD	Edward and Tessa McBride	Karl and Elaine Miller
Michele Dandrea Lowell	Mr. James McBride	Toby and Myra Moffett
Dr. Phyllis Magrab and Mr. Grant Peters	Camilla McCaslin	Wanda and Roger Monthey
Ms. Patricia Maher and Mr. Robert Reklaitis	Mark McConnell and Leslie Delagran	Joanna L. Moorhead and Ralph A. Taylor Jr.
Mr. and Mrs. Peter L. Malkin	Cathy and Scot McCulloch	Mr. and Mrs. David B. Morgan
Michele A. Manatt and Wolfram Anders	Ms. Patricia M. McDermott and	Adrienne and Jarrett Morrell
Barbra R. Mann	Mr. John R. Malgeri	

Teresa and Grant Morris	Deedy Ogden	Mr. and Mrs. Robert Perry
Kent and Dale Morrison	Roger H. Ogden	Ms. Mary Peterson and Ms. Lucille Hamblin
Seymour and Pearl Moskowitz	Pilar and Bill O'Leary	Mr. and Mrs. Devereaux Phelps
James J. and Susan D. Murphy	Orentreich Family Foundation	Ms. Diane Pirkey and Mr. Darrel Grinstead
Ms. Shaun Murphy and Mr. William McGreevey	Caroline Osborne	Dr. and Mrs. David A. Pistenmaa
Catherine Murray	Mr. and Mrs. David M. Osnos	Liz and Greg Platts
Mrs. Donald B. Myer	Patty and Carroll † Owens	Mary Margaret and Scott Plumridge
Mr. and Mrs. Jeffrey Myers	Ms. Vita Pagnani	Mr. Jeffrey S. Powell
Sue and Alyson Myers	Mr. and Mrs. Tony Parker	Mr. and Mrs. Roger S. Pratt
Christine Neptune and Robert Brown	Lynn Parseghian and Nat Cohen	Richard Price and Yung Chang
Kim Nettles	Gail Kern Paster and Philip J. Catapano	Mr. and Mrs. Paul Raffensperger
Sherry and Louis Nevins	Judy L. Patterson	Eden W. Rafshoon
William and Louisa Newlin	Kathleen F. Patterson and Floyd L. Norton	David and Meghan Rainey
Rob and Rebecca Nichols	Alma and John Paty	Mr. and Ms. David Ramer
Dr. Sara Nieves-Grafals and Mr. Albert Getz	Judge and Mrs. Michael T. Paul	Susan Rappaport
Mr. and Mrs. Darryl Nirenberg	Jonathan and Jill Pearlman	Wanda Rappaport and George Mueller
Gail and Gary Nordheimer	Mr. and Mrs. Charles Pease	Mr. and Mrs. John Daniel Reaves
Ms. Evelina Norwinski	Robert Andrew Peccola and Patrick Dupré Quigley	Cynthia Redick and Robert Brent
Dr. and Mrs. Kaldun Nossuli	Jean Perin	Thomas L. Reese
Giselle Larroque Obermeier and Stephen J. Obermeier	Mr. and Mrs. Bruce Coleman Perkins	Mr. and Mrs. Thorburn Reid
		Diana Reuter-Twining

Mr. and Mrs. R. Roland Reynolds

Mrs. Lynn Rhomberg

Robert and Madeleine Rix

Gretchen and Michael Robbins

Cara W. Robertson

Dr. William W. Robertson Jr. and  
Karel Dierks Robertson

Jane Washburn Robinson

Mr. and Mrs. Robert W. Robinson Jr.

Mr. and Mrs. Clifton E. Rodgers Jr.

Ms. Katrina Roeckelein and Mr. Philip de Picciotto

Michael Rogan and Susan Schaffer

Wynefred W. Rogerson

Anne and John Rollins

Eileen Dugan Romano

Shirley and Bill Rooker

Mrs. Milton Rose

Ms. Rochelle Rosenfeld and Mr. Jesse Arbogast

Helen G. Ross

Nancy L. Ross

Ms. Victoria Rostrow and Dr. David Hiatt

Marcia T. Rounsaville

David and Carolyn Ruben

Anne and Henry Reich Family Foundation,  
Lee Rubenstein, Co-President

Dr. and Mrs. J. R. Rudzki

Ann Satterthwaite

Savitt Family Fund of Tides Foundation

Edith Schafer

Mrs. Frances Way Schafer

Mr. and Mrs. Richard Schoenfeld

Mr. and Mrs. Guillermo M. Schultz

Dr. and Mrs. Andrew Schwartz

Fred Scott and Karen Turner

Cathryn Dickert Scoville and Thomas Scoville

Professor R. Mark Scowcroft

Joan Searby

Mr. and Mrs. Stephen R. Senkus

Ms. Margaret A. Shepard

Barbara Sherwin

Mary Shockey

Dr. Irwin Shuman and Elaine O. Feidelman

Hugh and Ruth Sichel

Nancy and Simon Sidamon-Eristoff

Fanchon Silberstein

John Silton and Betty Bullock

Barry and Beth Simon

Madlen and Marc Simon

Mr. Charles J. Simpson Jr. and Mrs. Pamela  
Raymont-Simpson

Mr. and Mrs. Hayes Smith

Mr. and Mrs. Matthew C. Smith

Mr. and Mrs. William C. Sonneborn

Mrs. Dolores Spitznagel-Stanko and  
Mr. Joseph Stanko

Ms. Joanne M. Sten

Mr. and Mrs. Edward R. Stettinius

Mrs. Mary Stettinius

Elizabeth and George Stevens Jr.

Mr. and Mrs. Richard P. Stifel Jr.

Mr. and Mrs. Donald A. Stoufer

Mr. and Mrs. David Straut

Douglas Struck

Mr. and Mrs. John Sukenik  
Nuzhat Sultan and Anil Revri  
Hilary and Frank Swain  
Ms. Margery Anne Swanson and  
Mr. Charles G. Brown  
Jake and Carrington Tarr  
Mr. Ragan S. Tate and Mr. Bobby P. Stone  
Dr. Stanley Tempchin and Mrs. Ruth Seif  
Mr. and Mrs. Alan Tennille  
Ms. Paula Thiede  
Mr. and Mrs. Robert H. Thompson  
Mrs. Joy A. Thornton  
William R. and Norma K. Tiefel  
Mr. and Mrs. William Tilghman  
Mike and Lalie Tongour  
Jessica and Henry Townsend  
Mr. and Mrs. Andrew J. Travers  
Ms. Laura Travis-DePrest and Mr. Geert DePrest  
William E. Trueheart and Carol A. Word  
Jennifer Urquhart and Elliott Jones

The Honorable Margaret E. G. Vanderhye and  
Robert A. Vanderhye  
Jane Stuart Vander Poel and Edoardo Lenzetti  
Mr. and Mrs. George D. Vassiliou  
Mr. and Mrs. Michael E. Vaughn  
Robert P. Venuti  
Melanne and Philip Verveer  
Barbara S. Wahl and Charles D. Ossola  
Dr. and Mrs. Kenneth J. Walker  
Diane and Marty Wapner  
Carol Warden  
Anne Webb  
Ms. Angela Caveness Weisskopf  
Judge Thomas B. Wells and Mrs. Mary Jo Wells  
Dorothy B. Wexler  
Dr. Brandy White and Dr. Anthony Malanoski  
Ms. Jan Pomerantz and Mr. Everett H. Wilcox  
Suzanne and Richard Willett  
Williams Family Foundation of Georgia, Inc.  
Mr. and Mrs. Cope Willis  
Mrs. Joanne Wilson

Ms. Margot Dinneen Wilson  
Mrs. Curtin Winsor III  
David and Page Winstead  
Ms. Maxanne Witkin  
Mr. and Mrs. Jim Wright  
Robert and Linda Yahn  
Charlotte Young and Calvin Cobb  
Ms. Elizabeth Young and Mr. John M. Benziger  
Mr. and Mrs. Anthony Zelano  
Margot Zimmerman

## **The Legacy Circle**

Legacy Circle members are those who have decided to include the National Gallery in their estate plans through various means.

Anonymous (44)  
The Adels Family  
Seena and Joseph Aisner, MD  
Carolyn Small Alper †  
Dennis Alter  
Lynn K. Altman Family Trust

Merribel S. Ayres

Ann M. † and Thomas W. Barwick

Mr. and Mrs. Frederick W. Beinecke

Mr. L. Graeme Bell III

Dava Berkman

Philip D. Berlin and Olivia P. Adler

Professor John Andrew Bernstein

Robert Hunt Berry in memory of R. K. Mellon,  
Ormond E. Hunt, and Paul Mellon

Thomas T. Bishop and Clifford L. Gregory

The Honorable † and Mrs. William McCormick  
Blair Jr.

Ambassador and Mrs. Donald Blinken  
in memory of Maurice H. Blinken

Deidre Bosley

Jay Bowyer and Christopher Greer

Andrew Brown

Ruth H. Buchanan †

Frances Ann Bufalo

Vincent J. Buonanno

Gilbert Butler

Mr. and Mrs. W. Russell G. Byers Jr.

Buffy and William † Cafritz

John P. Cahill

Norman and Carolyn K. Carr

Kay L. Casstevens

Faya Causey

Chuck L. Chandler

Bruce and Sharyn Charnas

A. James Clark † and Alice B. Clark

Thomas † and Robin Clarke

Brenda B. Coakley

Keith and Ann Conrad

T. A. Cox †

Ian † and Annette Cumming

Ted Dalziel

Joan Danziger

Muriel G. Davidson

Roy † and Cecily Langdale Davis

Shirley Ross Davis

Virginia L. Dean

Alexandra D. de Borchgrave

Cristina Del Sesto

Dr. Lois de Ménil and Dr. George de Ménil

Mr. Harry DeMott and Dr. Samantha Aldred

Marion F. Deshmukh

Mr. and Mrs. James F. Dicke II

Dr. J. Robert DiFulgo

Dr. Joseph P. DiGangi

Roger and Barbara Ditman

Alessandra Manning Dolnier

Patricia A. Donovan

Robert W. † and Louisa C. Duemling

Virginia Dwan

Merritt P. Dyke

Joan M. Eckert

Anne and Joel Ehrenkranz

Mr. and Mrs. Gerry Elliott

The Epstein Family Collection

Dr. K. Bolling Farmer

Lee and Ann Fensterstock

Andrew Fisher & Jeffry Weisman

Aaron I. Fleischman

Peter T. Foley



Michael C. Forman and Jennifer S. Rice	Sarah Greenough	Betsy Karel
Douglas and Pamela Fowler	Agnes Gund	Kasper †
Dr. Catherine Blanton Freedberg	The Stephen Hahn Family Collection	Jak Katalan
Barbara W. Freeman	Denise Hale	Gift of Kaufman Americana Foundation in honor of George M. † and Linda H. Kaufman
Howard and Shirlee Friedenber	John C. Harbert, MD †	Richard † and Elaine Kaufman
Barry D. Friedman	Harry W. Havemeyer	Judith Keenan
Maryann and Alvin † Friedman	Richard C. and Elizabeth A. Hedreen	Thomas and Kathleen Koepsell
David Morgan Frost	Deborah and Robert Hefferon	Robert and Arlene Kogod
Morton and Norma Lee Fung	Helen Lee Henderson	Michael W. Kolakowski
Suzi Gallagher	Dennis E. Henley and Nora L. Shea	Christie Kramer and Charles Kirby
Jo Ann and Julian Ganz, Jr.	Judith F. Hernstadt	Julie LaFave
William H. Gerdts † and Abigail Booth Gerdts	Maria C. Higgins	Stephen L. Lake
Mr. † and Mrs. Carl S. Gewirz	William L. Hopkins and Richard B. Anderson †	Evelyn † and Leonard Lauder
Kay Giddens Glenday	Jeffrey E. Horvitz	Jo Carole and Ronald S. Lauder
Milly and Arne Glimcher	Timothy and Suzanne Hyde	Alexander M. and Judith W. † Laughlin
Mary Anne Goley	Arthur C. G. Hyland	Arthur Lazarus Jr. †
Dr. Margaret A. Goodman	Carol Nigro and Charles T. Isaacs	Virginia Lee in memory of Dr. and Mrs. Chai-Chang Choi
Cheryl O. Gorelick	Pamela Jenkinson	The Honorable and Mrs. Marc E. Leland
Joyce Z. Greenberg in memory of her husband, Jacob Greenberg	Mr. James A. Johnson Jr.	Lynne R. Levin
Lenore and Bernard Greenberg	Paul M. Kanev	
	Linda Lichtenberg Kaplan	

Simon and Bonnie Levin  
Donald V. Lincoln  
Robert † and Mary Looker  
Angela M. LoRé in memory of her parents,  
Charles and Alice LoRé  
Nan Gillies Lower  
Jack and Betty Lou Ludwick  
Susan and Peter MacGill  
Joan and David Maxwell  
McCain McMurray and Cameron Griffith  
Ellen McPeake  
Mr. Robert B. Menschel  
Julie Middleton  
Mr. Harvey Shipley Miller and  
Mr. J. Randall Plummer  
Kent and Marcia Minichiello  
Daniel Minnich and Ann Moser  
Diane L. Morris  
Ann Mosca  
The Honorable Alfred H. Moses and  
Fern M. Schad  
Robert B. and Tanni D. Newlin

Jeffrey Hugh Newman  
Ann K. Richards Nitze  
Diane A. Nixon  
Geraldine E. Ostrove  
Stephen and Claudine Ostrow  
Mary and John Pappajohn  
Mr. and Mrs. J. B. Riggs Parker  
Dr. James D. Parker  
Elisa M. Patterson  
Ainslie and Keith Peoples  
Dewayne and Faith Perry  
Ivan E. and Winifred Phillips  
Judith D. Pomeranz  
Helen Porter and James T. Dyke  
Mrs. Susan Porter and The Honorable  
Stephen † W. Porter  
Richard and Jeanne Press  
Richard J. Price  
Judy Lynn Prince  
Francis H. Rasmus  
Carol Bird Ravenal, PhD †

Mary L. Regan  
Diane Rehm  
Anita and Burton Reiner †  
Paul Richard  
Mr. † and Mrs. George W. Riesz  
The Rizik Family  
Susan Roberts  
Mary and David † Robinson  
Andrew Robison  
Sharon Percy Rockefeller  
Felicia Warburg Rogan  
Diane Rosacker  
James Hassell Ross Jr.  
Trina and Lee G. Rubenstein  
William Rudolf  
Gwendolyn Russell  
Jeff Sackrider  
Irving † and Lucy Sandler  
Douglas Schaller  
Deanna J. Schupbach, PhD  
David P. Schuyler †

Charles and Helen Schwab  
Joyce Pomeroy Schwartz  
Cathryn Dickert Scoville  
Deborah and Ed Shein  
Ruth and Hugh Sickel  
Gerald and Ellen Sigal  
John Silberman and Elliot Carlen  
Iris Silverman  
Albert and Shirley Small  
Robert H. † and Clarice Smith  
Mary and Dan Solomon  
Richard Spear and Athena Tacha Spear  
Robert M. Stana and William T. Judy Jr.  
James D. and Kathryn K. Steele  
Stephen G. Stein  
Robert Stockho  
Mrs. Walter J. Stoessel Jr.  
Donald D. Stone  
Lou M. Stovall and Di B. Stovall  
Robert T. and Bonnie Sweet  
Christine Taylor and Lee Broughton

Stanley and Barbara † Tempchin  
Ann Van Devanter Townsend and  
Lewis Raynham † Townsend  
Christiane and James Valone  
Daniel and Winifred van der Rijn  
Jack and Margrit Vanderryn  
André-François H. Villeneuve  
Dorothy and Herbert † Vogel  
Bettye S. Walker  
Ambassador Jenonne Walker  
Mallory and Diana Walker  
Mrs. Patricia A. Walters  
David Warnock  
Thomas and Mary Washington  
Jane P. Watkins  
Michael H. Weaver †  
Mrs. Robert M. Weidenhammer  
Angela Caveness Weisskopf  
The Honorable Allan Wendt and Que D. Nguyen  
Larry J. West and Diana King  
Mr. and Mrs. J. Bruce Whelihan

Malcolm Wiener  
Professor John Wilmerding  
Christopher and Beverly With in memory  
of Karl and Gerda With  
Andrea Woodner  
Dian Woodner  
David F. Wright in memory of my good friend,  
John Taylor Arms IV  
Steven J. Wunder  
Judy and Leo Zickler  
Charles S. and Elynn B. Zucker  
† Deceased  
Every effort has been made to create a complete  
and accurate list of contributors. Due to limited  
space, gifts under \$1,000 are not listed.  
Gifts to the National Gallery may be made in  
the form of cash, securities, or real and personal  
property, and may be directed toward specific  
programs or be designated as unrestricted. Some  
donors make outright gifts, while others elect to  
make deferred gifts to help provide for the future.  
All gifts and bequests are deductible, within the  
limits prescribed by law, for applicable federal tax  
purposes. For further information, please call the  
development office at (202) 842-6372.