



Anonymous Artist

Rembrandt van Rijn

Dutch, 1606 - 1669

Willem Drost

Dutch, active c. 1650 - active 1655

## *The Philosopher*

c. 1653

oil on panel

overall: 61.5 x 49.5 cm (24 3/16 x 19 1/2 in.)

framed: 105.4 x 92.4 x 9.2 cm (41 1/2 x 36 3/8 x 3 5/8 in.)

Widener Collection 1942.9.66

---

### ENTRY

With piercing, deep-set eyes, this bearded man leans forward and stares off to his right. He wears a wide, floppy beret and a red-and-yellow patterned robe draped over his shoulders. While this mysterious and intense figure has traditionally been identified as “The Jewish Philosopher,” this designation is undoubtedly fanciful. Nevertheless, the image clearly depicts a concerned individual who seems to be actively brooding over his thoughts.

From 1639 until 1656 Rembrandt lived in a large house on the Jodenbreestraat on the edge of the Jewish quarter in Amsterdam. During those years, and particularly from the late 1640s, he frequently depicted Jewish models in his paintings. As Rosenberg has suggested, Rembrandt probably found in the picturesque faces of the Ashkenazi Jews an intense spirituality that suggested to him the spirit of the people who populated the ancient world.[1] At a time when he was searching for a deeper emotional understanding of biblical and historical figures, he found in these care-worn faces an underlying philosophical awareness of human existence. Although a painting such as this was undoubtedly executed from life, it was not considered a portrait in the conventional sense, but rather a *tronie*, a bust-length figure study that was an imaginative evocation of the model.

This man, with his sad eyes and sharply chiseled features, is seen again in one of Rembrandt’s most memorable figure studies, *A Bearded Man in a Cap* from 165[7] (National Gallery, London) [fig. 1]. He was also the model Rembrandt used for his 1653 masterpiece, *Aristotle Contemplating a Bust of Homer* [fig. 2], as well as for

*The Apostle Paul* from about 1657.

Thus, although this work is neither signed nor dated, it must have been created in the mid-1650s, and, perhaps somewhat earlier, because the figure looks slightly younger. In all three of these other paintings, moreover, Rembrandt has given the figure a fuller beard than is apparent in *The Philosopher*. The differences between *The Philosopher* and these other works, however, are more profound than those of age and beard size. In the latter paintings Rembrandt has suggested a more thoughtful individual both by emphasizing the wrinkles in his forehead and by throwing the upper portion of his face into shadow. In contrast to *Aristotle*, in particular, the expression of *The Philosopher* lacks subtlety and psychological understanding. The differences are in part ones of intent, but they also suggest that the works were created by different artistic personalities.

A close examination of the painting techniques in *The Philosopher* indicates that this work, though executed with great sensitivity, cannot be by the master. The primary difference between it and comparable works by Rembrandt from the early 1650s is that here the features are more sharply defined and articulated. The eyes are particularly distinctive because of the pink accents along the lower portion of the lid. The nose, likewise, is forcefully modeled, with thick impastos along the bridge and thin translucent paints that reveal the other ground beneath in the shadow. Other areas, particularly the beard, are painted with feathery strokes that are unlike Rembrandt's brushwork. Also unusual in the beard is the way that the edges have been softened with strokes of white from the white shirt beneath it.

A more marked difference in handling from that seen in Rembrandt's own works is the rather superficial indication of the colored pattern of the man's robe. The contour of the robe, moreover, is not sensitively conceived. Not only does it not define a logical form, but the nuances of shading that one finds along such a contour in Rembrandt's paintings are absent. Finally, the hands lack structure.

The awkward appearance of the hands must have bothered an early collector or restorer. From the time that the painting first entered the Rembrandt literature in 1905 until it was treated in 1983–1984, the hands were covered by two layers of overpaint, a gray layer with a dark brown resinous one over it [fig. 3]. Just when the hands had been overpainted could not be determined by technical examination, but it was clearly done at a relatively late date because the overpaint covered old-age crackle and paint losses. Quite possibly the overpaint was applied during the eighteenth century, for in 1772 a larger version of the composition without the

hands was auctioned in Paris.[2]

Although no trace of the painting from this sale has ever been found, another version of *The Philosopher*, also without hands but on canvas, appeared on the art market in London at about the same time that the Washington painting appeared in Paris. In 1911 this version passed through the collection of Maurice Kann in Paris, the same collector who had owned *The Philosopher* in 1905, the year before P. A. B. Widener bought it. In 1914 Kann sold the recently discovered version to the Berlin collector Marcus Kappel, whose collection was cataloged by Wilhelm von Bode. Bode, who had published *The Philosopher* in his corpus on Rembrandt paintings in 1906, reversed himself in his catalog of the Kappel Collection and argued that the Kappel painting was the original.[3] Bode's assessment of the Kappel version has found little support in the literature.[4] The Kappel painting changed hands three more times and is now in the collection of the Haggerty Museum of Art as "attributed to Rembrandt van Rijn" [fig. 4]. The National Gallery of Art painting was accepted as a Rembrandt by all Rembrandt scholars until it was rejected in 1969 by Gerson.[5]

The questions concerning the hands are of interest because *The Philosopher* is painted on two different panels. While most of the image is painted on a walnut panel, joined to it along the bottom edge is an oak strip measuring approximately five centimeters in width on which the hands are painted. Although no difference in execution or in pigments is evident in the treatment of the hands on the main panel and on the strip, the grounds are not identical. In the ground of the main panel appear the elements mercury and tin, indicating the presence of vermilion and possibly lead-tin yellow, elements that are missing on the smaller strip. The differences in the grounds suggest that the bottom strip was added after the composition had been planned on a smaller scale, and thus, presumably, without hands.[6] Along with this alteration are a number of other design changes. The artist raised the model's right shoulder slightly and changed the shape of the hat at least three times. Initially he painted it substantially larger, then reduced it to the size of a skullcap, before painting it in its present size.

A number of stylistic similarities exist between this work and paintings by Willem Drost (Dutch, active c. 1650 - active 1655), who, according to Houbraken, was a pupil of Rembrandt's.[7] Although the dates of his apprenticeship to Rembrandt are not known, a number of signed and dated works from the early 1650s indicate that in these years he was strongly influenced by the master.[8] This period corresponds to the time this work was probably executed. One characteristic of

 NATIONAL GALLERY OF ART ONLINE EDITIONS  
*Dutch Paintings of the Seventeenth Century*

Drost's paintings of male sitters that parallels the pose of the man in *The Philosopher* is that his figures often stare very intently out of the picture plane.[9] Facial features tend to be firmly modeled, although he frequently had problems depicting hands. Not only do many of them lack structure, but the wrists join awkwardly with the foreshortened arms.[10] Finally, he favored red and orange colors and patterned robes such as that worn by the subject in *The Philosopher*. A comparable example is his painting *A Young Woman* in the Wallace Collection, from about 1654 [fig. 5]. The stylistic connection between his works and *The Philosopher* seems sufficiently strong to suggest that he may have depicted this striking image.[11]

Arthur K. Wheelock Jr.

April 24, 2014

---

**COMPARATIVE FIGURES**



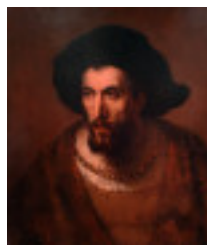
**fig. 1** Rembrandt van Rijn, *A Bearded Man in a Cap*, 165(7), oil on canvas, National Gallery, London. Photo © National Gallery, London / Art Resource, NY



**fig. 2** Rembrandt van Rijn, *Aristotle Contemplating a Bust of Homer*, 1653, oil on canvas, Metropolitan Museum of Art, New York, Purchased with special funds and gifts of friends of the Museum, 1961. Photo © The Metropolitan Museum of Art / Art Resource, NY



**fig. 3** Before the 1983–1984 conservation treatment, Rembrandt Workshop (Possibly Willem Drost), *The Philosopher*, c. 1653, oil on panel, National Gallery of Art, Washington, Widener Collection, 1942.9.66



**fig. 4** Rembrandt Workshop, *The Philosopher*, c. 1650–1655, oil on canvas, Haggerty Museum of Art, Museum Purchase, 2003.18



**fig. 5** Willem Drost, *Young Woman in Brocade*, c. 1654, oil on panel, Trustees of the Wallace Collection, London

---

**NOTES**

- [1] Jakob Rosenberg, *Rembrandt*, 2 vols. (Cambridge, Mass., 1948), 1:59–63.
- [2] Louis-Michel Van Loo sale, Paris, December 14, 1772, no. 29. The painting, which measured “2 pieds 8 pouc. sur 2 pieds 2 pouc.,” is fully described, and the image is also known through a summary sketch by Gabriel de Saint-Aubin, who attended the sale. See Emile Dacier, *Catalogues de ventes et livrets de salons illustrés par Gabriel de Saint-Aubin*, 11 vols. (Paris, 1909–1921), 5:1911.
- [3] Wilhelm von Bode, *Die Gemäldegalerie Marcus Kappel in Berlin* (Berlin, 1914), 6–7.
- [4] Abraham Bredius, *Rembrandt, Schilderijen* (Vienna, 1935), 11, no. 260, writes about the Kappel version: “I am not convinced either by the authenticity of the signature, or by the attribution.” One notable exception is the opinion of R. Langston Douglas, “Three Pictures by Rembrandt from the Van Loo Collection,” *Art in America* 36 (April 1948): 69–74, who wrote that the Kappel version (then being offered for sale by Duveen in New York) was the original. See also Jonathan Bikker, *Willem Drost (1633–1659): A Rembrandt Pupil in Amsterdam and Venice* (New Haven and London, 2005), no. R 24, 154–156, 155, repro. The two paintings hung together briefly at the National Gallery of Art in the late 1990s. Although they were remarkably similar in appearance, a comparison of the X-radiographs of the two paintings indicated that they had been built up in entirely different manners and, thus, that they had been created by different artists.
- [5] Abraham Bredius, *Rembrandt: The Complete Edition of the Paintings*, revised by Horst Gerson (London, 1969), 569. Gerson notes that the Kappel version was in the H. John Collection, Milwaukee, in 1962. Gerson is misleading when he writes: “Bredius was unwilling to attribute either version to Rembrandt.” Bredius did reject the Kappel version (see this entry, note 5) but merely noted the existence of the National Gallery of Art (then Widener) painting.
- [6] See pigment analysis undertaken in August 1984 by Barbara Miller (NGA curatorial files).
- [7] Arnold Houbraken, *De groote schouburgh der Nederlantsche konstschilders en schilderessen* 3 vols. (The Hague, 1753; reprint, Amsterdam, 1980), 3:61.
- [8] Werner Sumowski, *Gemälde der Rembrandt-Schüler*, 6 vols. (Landau in der Pfalz, 1983), 1:608–651.
- [9] See, for example, Drost’s *Sitting Man with a Plumed Hat*, formerly Baron Alphonse de Rothschild Collection, Paris, illus. in Werner Sumowski, *Gemälde der Rembrandt-Schüler*, 6 vols. (Landau in der Pfalz, 1983), 1: no. 331.
- [10] See Werner Sumowski, *Gemälde der Rembrandt-Schüler*, 6 vols. (Landau in

der Pfalz, 1983), 1: no. 329.

- [11] Jonathan Bikker, *Willem Drost (1633–1659): A Rembrandt Pupil in Amsterdam and Venice* (New Haven and London, 2005), 154–156, no. R 24, on the other hand, finds the stylistic connections to be insufficiently close to attribute the painting firmly to Drost.
- 

## TECHNICAL SUMMARY

The cradled panel support is composed of two vertically grained boards of wood joined horizontally through the figure's hands. The join is 5.5 cm from the bottom edge. The main board is walnut, and the lower extension is oak.[1] Edging strips have been added to the top and sides.[2]

A thin white or beige ground layer is present on both upper and lower panel boards, with variations in composition. Density in the X-radiographs indicates the presence of a small amount of white lead in the ground in the main panel but not in the extension. A thin, dark, translucent red layer was laid directly on both panel boards, but there are variations in the pigment composition between the two areas.[3]

The paint was applied thickly in the light passages, with low impasto and loose brushmarking, and more thinly in the dark passages and the background. The imprimatura color was incorporated into the radiating lines on the hat, and into the flesh tones, where mid-tones were created by thinly glazing the red underlayer.

Several changes are visible as pentimenti, in infrared reflectography,[4] and in the X-radiographs. The contour of the proper right shoulder was raised slightly, and the hat was initially larger. The gray background was then drawn over the hat to decrease its size, followed by a repainting of the hat in its present size. The painting was treated in 1983-1984 to remove discolored varnish and overpaint that covered the lower part of the sitter's arms and his hands.

[1] The characterization of the wood was accomplished by Dr. Peter Klein. (See note dated March 1986 in Conservation department files.)

[2] The exact method used to encase this painting is difficult to determine because of the presence of the cradle. Dating the panel was not possible because of the

complex construction. (See report from Dr. Joseph Bauch, University of Hamburg, dated November 29, 1977 in NGA Conservation department files).

[3] The ground and paint in the main panel and the bottom extension were analyzed by the NGA Scientific Research department using cross-sections and X-ray fluorescence spectroscopy (see reports dated August 22, 1984; August 24, 1984; April 24, 1986, in NGA Conservation department files). The analysis indicated the presence of vermilion in the ground on the main panel but not on the extension.

[4] Infrared reflectography was performed using a Hammamatsu c/1000-03 vidicon camera fitted with a lead sulphide tube.

---

## PROVENANCE

(Charles Sedelmeyer, Paris, 1905). Maurice Kann, Paris, by 1906;<sup>[1]</sup> (Charles Sedelmeyer, Paris); sold 20 December 1906 to Peter A. B. Widener, Lynnewood Hall, Elkins Park, Pennsylvania; inheritance from Estate of Peter A. B. Widener by gift through power of appointment of Joseph E. Widener, Elkins Park, Pennsylvania; gift 1942 to NGA.

[1] Sedelmeyer Gallery, *Catalogue of 100 Paintings by Old Masters*, Paris, 1905, 36, does not mention that the painting came from the Kann Collection. Since provenance was generally cited in Sedelmeyer's catalogues, and Maurice Kann bought almost all of his paintings from Sedelmeyer, it seems reasonable to infer that *The Philosopher* had not yet been owned by Kann when Sedelmeyer offered it for sale in 1905. When the picture was catalogued in 1906 (Wilhelm von Bode, assisted by Cornelis Hofstede de Groot, *The Complete Work of Rembrandt*, trans. Florence Simmonds, 8 vols., Paris, 1897-1906, 8: 39, 126, 378), Bode noted on page 126 that the painting was in the Kann Collection and then on page 378 that it had changed hands and was with Sedelmeyer.

---

## EXHIBITION HISTORY



1909 The Hudson-Fulton Celebration, The Metropolitan Museum of Art, New York, 1909, no. 96.

1969 Rembrandt in the National Gallery of Art [Commemorating the Tercentenary of the Artist's Death], National Gallery of Art, Washington, D.C., 1969, no. 5, 15, repro., as by Rembrandt.

---

## BIBLIOGRAPHY

- 1885 Modern Paintings. Catalogue of Paintings forming the Private Collection of P.A.B. Widener, Ashborne--near Philadelphia, privately printed, 1908: 212.
- 1897 Bode, Wilhelm von, and Cornelis Hofstede de Groot. *The Complete Work of Rembrandt*. 8 vols. Translated by Florence Simmonds. Paris, 1897-1906: 8:39, 126, 378, no. 582.
- 1905 Sedelmeyer, Charles. *Illustrated Catalogue of the Ninth Series of 100 Paintings by Old Masters*. 2 vols. Paris, 1905: 36, no. 27, repro.
- 1907 Hofstede de Groot, Cornelis. *A Catalogue Raisonné of the Works of the Most Eminent Dutch Painters of the Seventeenth Century*. 8 vols. Translated by Edward G. Hawke. London, 1907-1927: 5(1916):233, no. 449.
- 1907 Hofstede de Groot, Cornelis. *Beschreibendes und kritisches Verzeichnis der Werke der hervorragendsten holländischen Maler des XVII. Jahrhunderts*. 10 vols. Esslingen and Paris, 1907-1928: 6(1915):203, no. 449.
- 1908 Rosenberg, Adolf. *Rembrandt, des Meisters Gemälde*. Klassiker der Kunst in Gesamtausgaben, 2. 2nd ed. Stuttgart and Leipzig, 1908: 365, repro.
- 1909 Marguillier, Auguste. "Collection de feu M. Maurice Kann." *Les Arts* (April 1909): 1-32, no. 88.
- 1909 Rosenberg, Adolf. *Rembrandt: Des Meisters Gemälde*. Edited by Wilhelm R. Valentiner. Klassiker der Kunst in Gesamtausgaben 2. Stuttgart and Leipzig, 1909: repro. 365.
- 1909 Valentiner, Wilhelm R. *Catalogue of a collection of paintings by Dutch masters of the seventeenth century*. The Hudson-Fulton Celebration 1. Exh. cat. Metropolitan Museum of Art. New York, 1909: 97, no. 96, repro., 156, 161.
- 1910 Valentiner, Wilhelm R. "Die Ausstellung holländischer Gemälde in New York." *Monatshefte für Kunstwissenschaft* 3 (1910): 9.
- 1910 Valentiner, Wilhelm R. *Catalogue of a Loan Exhibition of Paintings by Old Dutch Masters Held at the Metropolitan Museum of Art in Connection with the Hudson-Fulton Celebration*. New York, 1910: repro.

- 324, 325, no. 96.
- 1913 Hofstede de Groot, Cornelis, and Wilhelm R. Valentiner. *Pictures in the collection of P. A. B. Widener at Lynnewood Hall, Elkins Park, Pennsylvania: Early German, Dutch & Flemish Schools*. Philadelphia, 1913: unpaginated, intro., no. 34, repro., as by Rembrandt van Rijn.
- 1914 Valentiner, Wilhelm R. *The Art of the Low Countries*. Translated by Mrs. Schuyler Van Rensselaer. Garden City, NY, 1914: 247, no. 56.
- 1923 *Paintings in the Collection of Joseph Widener at Lynnewood Hall*. Intro. by Wilhelm R. Valentiner. Elkins Park, Pennsylvania, 1923: unpaginated, repro., as by Rembrandt.
- 1923 Meldrum, David S. *Rembrandt's Painting, with an Essay on His Life and Work*. New York, 1923: 197, no. 283.
- 1931 *Paintings in the Collection of Joseph Widener at Lynnewood Hall*. Edited by Wilhelm R. Valentiner. Elkins Park, Pennsylvania, 1931: 70, repro., as by Rembrandt.
- 1931 Valentiner, Wilhelm R. *Rembrandt Paintings in America*. New York, 1931: no. 108.
- 1935 Bredius, Abraham. *Rembrandt Gemälde, 630 Abbildungen*. Vienna, 1935: no. 260, repro.
- 1935 Bredius, Abraham. *Rembrandt Schilderijen, 630 Afbeeldingen*. Utrecht, 1935: no. 260, repro.
- 1936 Bredius, Abraham. *The Paintings of Rembrandt*. New York, 1936: no. 260, repro.
- 1942 Bredius, Abraham. *The Paintings of Rembrandt*. 2 vols. Translated by John Byam Shaw. Oxford, 1942: no. 260, repro.
- 1942 National Gallery of Art. *Works of art from the Widener collection*. Washington, 1942: 6, no. 662, as by Rembrandt van Rijn.
- 1948 Douglas, R. Langton. "Three Pictures by Rembrandt from the Van Loo Collection." *Art in America* 36 (April 1948): 73-74, fig. 3.
- 1948 National Gallery of Art. *Paintings and Sculpture from the Widener Collection*. Washington, 1948: 41, repro., as by Rembrandt van Rijn.
- 1948 Rosenberg, Jakob. *Rembrandt*. 2 vols. Cambridge, MA, 1948: 1:59, 2:fig. 98.
- 1959 National Gallery of Art. *Paintings and Sculpture from the Widener Collection*. Reprint. Washington, DC, 1959: 41, repro., as by Rembrandt.
- 1963 Walker, John. *National Gallery of Art, Washington, D.C.* New York, 1963 (reprinted 1964 in French, German, and Spanish): 313, repro., as by Rembrandt van Rijn.
- 1964 Rosenberg, Jakob. *Rembrandt: Life and Work*. Revised ed. Greenwich, Connecticut, 1964: 111, fig. 98.
- 1965 National Gallery of Art. *Summary Catalogue of European Paintings and Sculpture*. Washington, 1965: 110, as by Rembrandt.
- 1966 Bauch, Kurt. *Rembrandt Gemälde*. Berlin, 1966: 12, no. 214, repro.
- 1968 National Gallery of Art. *European Paintings and Sculpture, Illustrations*.

## NATIONAL GALLERY OF ART ONLINE EDITIONS

*Dutch Paintings of the Seventeenth Century*

- Washington, 1968: 96, no. 662, repro., as by Rembrandt.
- 1969 Bredius, Abraham. *Rembrandt: The Complete Edition of the Paintings*. Revised by Horst Gerson. 3rd ed. London, 1969: 539, 569, no. 260A, repro.
- 1969 National Gallery of Art. *Rembrandt in the National Gallery of Art: Commemorating the tercentenary of the artist's death*. Exh. cat. National Gallery of Art, Washington, 1969: 7, 15, no. 5, repro.
- 1975 National Gallery of Art. *European paintings: An Illustrated Summary Catalogue*. Washington, 1975: 288, repro., as by Rembrandt.
- 1975 Walker, John. *National Gallery of Art, Washington*. New York, 1975: 273, no. 362, color repro.
- 1984 Walker, John. *National Gallery of Art, Washington*. Rev. ed. New York, 1984: 273, no. 356, color repro., as by Rembrandt van Ryn.
- 1985 National Gallery of Art. *European Paintings: An Illustrated Catalogue*. Washington, 1985: 334, repro.
- 1990 Liedtke, Walter A. "Dutch Paintings in America: The Collectors and their Ideals." In *Great Dutch Paintings from America*. Edited by Ben P.J. Broos. Exh. cat. Royal Picture Gallery Mauritshuis, The Hague; Fine Arts Museums of San Francisco. The Hague and Zwolle, 1990: 43 fig. 30.
- 1995 Wheelock, Arthur K., Jr. *Dutch Paintings of the Seventeenth Century*. The Collections of the National Gallery of Art Systematic Catalogue. Washington, 1995: 309-314, color repro. 311.
- 2000 Dunn, Nicola. *Old Masters*. Exh. cat. Salomon Lilian Gallery, Amsterdam, 2000: 22-23, fig. 2.
- 2004 Wagstaff, Sheena. *Edward Hopper*. Exh. cat. Tate Modern, London; Museum Ludwig, Cologne. London, 2004: 17, fig. 7.
- 2005 Bikker, Jonathan. *Willem Drost (1633-1659): a Rembrandt pupil in Amsterdam and Venice*. New Haven and London, 2005: 154-156, 155, no. R24, repro.

**To cite:** Arthur K. Wheelock Jr., "Anonymous Artist, Rembrandt van Rijn, Willem Drost/*The Philosopher*/c. 1653," *Dutch Paintings of the Seventeenth Century*, NGA Online Editions, <http://purl.org/nga/collection/artobject/1205> (accessed April 24, 2014).