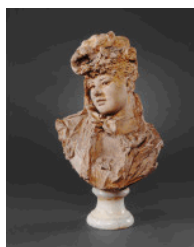




NATIONAL GALLERY OF ART

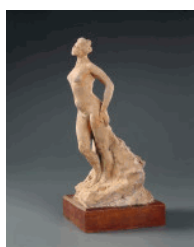
Objects by Auguste Rodin on view at the National Gallery of Art as of February 7, 2017



Rodin, Auguste SC
French, 1840 - 1917
Bust of a Woman, 1875
terracotta with plaster and paint
overall: 48.9 x 35.6 x 26.9 cm (19 1/4 x 14 x 10 9/16 in.)
Inscriptions: on lower back: offert à madame & / monsieur J.W. Simpson / A. Rodin / 1908 / terre-cuite originale faite / en 1875
Gift of Mrs. John W. Simpson
1942.5.3 (A-67)
G-003, CENTER [West Ground Floor Gallery 3] (01 Jul 2014)



Rodin, Auguste SC
French, 1840 - 1917
Bust of a Young Girl, 1868
terracotta with plaster
overall (without base): 31.1 x 16.5 x 17.5 cm (12 1/4 x 6 1/2 x 6 7/8 in.)
overall (with base): 40 x 16.5 x 17.5 cm (15 3/4 x 6 1/2 x 6 7/8 in.)
Inscriptions: on back: BUSTE.FAIT.EN.1868 / RETROUVÉ.OFFERT.A.MMe K. Simpson / EN 1905 / A. RODIN
Gift of Mrs. John W. Simpson
1942.5.4 (A-68)
G-003, N, 3 [West Ground Floor Gallery 3] (01 Jul 2014)



Rodin, Auguste SC
French, 1840 - 1917
Statuette of a Woman, possibly early 20th century
terracotta
overall: 35 x 17.2 x 18.7 cm (13 3/4 x 6 3/4 x 7 3/8 in.)
Inscriptions: on side of base below right hip: Rodin
Gift of Mrs. John W. Simpson
1942.5.5 (A-69)
G-001-C, W, 2, CASE 1 [West Ground Floor Gallery 1C] (07 Jan 2009)



Rodin, Auguste SC
French, 1840 - 1917
Statuette of a Woman, possibly early 20th century
terracotta
overall: 32.4 x 10.2 x 11.6 cm (12 3/4 x 4 x 4 9/16 in.)
Inscriptions: behind left leg: Rodin
Gift of Mrs. John W. Simpson
1942.5.6 (A-70)
G-001-C, W, 4, case 2 [West Ground Floor Gallery 1C] (20 Nov 2014)



Rodin, Auguste SC
French, 1840 - 1917
Eve Eating the Apple, c. 1885
terracotta
overall: 23 x 27 x 15.6 cm (9 1/16 x 10 5/8 x 6 1/8 in.)
Inscriptions: on self-base below left leg: A. Rodin
Gift of Mrs. John W. Simpson
1942.5.7 (A-71)
G-001-C, W, 2, CASE 1 [West Ground Floor Gallery 1C] (07 Jan 2009)

Objects by Auguste Rodin on view at the National Gallery of Art as of February 7, 2017



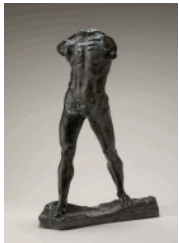
Rodin, Auguste
French, 1840 - 1917
La France, 1904
bronze
overall: 49.5 x 48.5 x 35.3 cm (19 1/2 x 19 1/8 x 13 7/8 in.)
Inscriptions: on left shoulder: A. Rodin; on underside of right shoulder in raised letters: A. Rodin
Gift of Mrs. John W. Simpson
1942.5.9 (A-73)
G-003, N, 8 [West Ground Floor Gallery 3] (30 Jun 2014)

SC



Rodin, Auguste
French, 1840 - 1917
The Age of Bronze (L'Age d'Airain), model 1875-1876, cast 1903-1904
bronze
overall: 104.1 x 35 x 27.9 cm (41 x 13 3/4 x 11 in.)
Inscriptions: on left side of base near left foot: Rodin; cachet in raised letters on inside of left foot: A. Rodin
Gift of Mrs. John W. Simpson
1942.5.10 (A-74)
G-007, W, 3 [West Ground Floor Gallery 7] (09 Oct 2014)

SC



Rodin, Auguste
French, 1840 - 1917
The Walking Man (L'Homme qui marche), model 1878-1900, cast probably 1903
bronze
overall: 85.1 x 59.8 x 26.5 cm (33 1/2 x 23 9/16 x 10 7/16 in.)
Inscriptions: incised on base between the feet: A. Rodin; in raised letters on underside of base inside left foot: A. Rodin; in raised letters behind right heel, on underside of base: A. Rodin
Gift of Mrs. John W. Simpson
1942.5.11 (A-75)
G-007, W, 1 [West Ground Floor Gallery 7] (16 Mar 2012)

SC



Rodin, Auguste
French, 1840 - 1917
The Thinker (Le Penseur), model 1880, cast 1901
bronze
overall: 71.5 x 36.4 x 59.5 cm (28 1/8 x 14 5/16 x 23 7/16 in.)
Inscriptions: incised on base at left side: A. Rodin; on lower left side of the interior of base: A. Rodin
Gift of Mrs. John W. Simpson
1942.5.12 (A-76)
G-002, W, 1 [West Ground Floor Gallery 2] (30 Jun 2014)

SC



Rodin, Auguste
French, 1840 - 1917
A Burgher of Calais (Jean d'Aire), model 1884-1889, reduction cast probably 1895
bronze
overall: 47 x 16 x 14 cm (18 1/2 x 6 5/16 x 5 1/2 in.)
Inscriptions: on back of base: A. Rodin
Gift of Mrs. John W. Simpson
1942.5.13 (A-77)
G-002, S, 2, CASE [West Ground Floor Gallery 2] (25 Aug 2015)

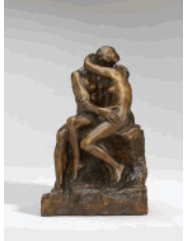
SC

Objects by Auguste Rodin on view at the National Gallery of Art as of February 7, 2017



Rodin, Auguste
French, 1840 - 1917
Head of Balzac, model 1897, cast probably early 20th century
bronze
overall: 16.5 x 20.9 x 18.1 cm (6 1/2 x 8 1/4 x 7 1/8 in.)
Inscriptions: on lower back in left corner: A. Rodin; sticker on the interior: MFA / Simpson
Gift of Mrs. John W. Simpson
1942.5.14 (A-78)
G-002, E, 1, CASE [West Ground Floor Gallery 2] (28 May 2014)

SC



Rodin, Auguste
French, 1840 - 1917
The Kiss (Le Baiser), model 1880-1887, cast c. 1898/1902
bronze
overall: 24.7 x 15.8 x 17.4 cm (9 3/4 x 6 1/4 x 6 7/8 in.)
Inscriptions: on front of rock, stamped below left hip of female figure: RODIN; on left side of rock, in script: hommage à Madame / Kate Simpson / en souvenir des heures / d'atelier Sept 1902 / A. Rodin; stamped below dedication is Collas metal inset: REDUCTION MÉCANIQUE / A. COLLAS / BREVETE; by hand on right bottom edge, below right foot of male figure: F. BARBEDIENNE, Fondateur; stamped inside cast: R / 407
Gift of Mrs. John W. Simpson
1942.5.15 (A-79)
G-002, E, 2 [West Ground Floor Gallery 2] (03 Oct 2014)

SC



Rodin, Auguste
French, 1840 - 1917
Katherine Seney Simpson (Mrs. John W. Simpson), 1902-1903
marble
overall: 55.4 x 69 x 41.5 cm (21 13/16 x 27 3/16 x 16 5/16 in.)
Inscriptions: on left side of self-base, on a flat leaf carved below the shoulder: A. Rodin / 1903
Gift of Mrs. John W. Simpson
1942.5.16 (A-80)
G-002, N, 2 [West Ground Floor Gallery 2] (30 Jun 2014)

SC



Rodin, Auguste
French, 1840 - 1917
The Evil Spirits, c. 1899
marble
overall: 71.2 x 75.7 x 59 cm (28 1/16 x 29 13/16 x 23 1/4 in.)
Inscriptions: on bottom right side of base: A. Rodin
Gift of Mrs. John W. Simpson
1942.5.17 (A-81)
G-003, E, 1 [West Ground Floor Gallery 3] (18 Jul 2014)

SC

Objects by Auguste Rodin on view at the National Gallery of Art as of February 7, 2017



Rodin, Auguste SC
French, 1840 - 1917
Morning, 1906
marble
overall: 60.4 x 28.7 x 33.3 cm (23 3/4 x 11 5/16 x 13 1/8 in.)
Inscriptions: on proper left side, on a smoothed-out rectangular surface at bottom of self-base: A. Rodin 1906; above the primary signature, near the figure's knee, another signature, partially removed by a sculptor's tool: A R d i
Gift of Mrs. John W. Simpson
1942.5.18 (A-82)
G-003, N, 4 [West Ground Floor Gallery 3] (30 Jun 2014)



Rodin, Auguste SC
French, 1840 - 1917
Woman and Child (originally Première Impression d'Amour), model c. 1885, carved c. 1900-1901
marble
overall: 43.2 x 44.4 x 33.1 cm (17 x 17 1/2 x 13 1/16 in.)
Inscriptions: on a smoothed irregular rectangle on bottom left side: A. Rodin
Gift of Mrs. John W. Simpson
1942.5.19 (A-83)
G-003, N, 5 [West Ground Floor Gallery 3] (30 Jun 2014)



Rodin, Auguste SC
French, 1840 - 1917
Aurora and Tithonus, 1905 or 1906
plaster
overall (greatest extension): 26.6 cm (10 1/2 in.)
Inscriptions: on truncated end below Tithonus' head: L'Aurore se leve de la / couche du beau Typhon / Metamorphose / d'Ovide; on the side under Tithonus' left elbow: hommage à Mme Kate Simpson / A Rodin / 1907
Gift of Mrs. John W. Simpson
1942.5.20 (A-84)
G-002, E, 1, CASE [West Ground Floor Gallery 2] (28 May 2014)



Rodin, Auguste SC
French, 1840 - 1917
Mask of Katherine Seney Simpson (Mrs. John W. Simpson), 1902
plaster
overall: 17.8 x 19.5 x 15.3 cm (7 x 7 11/16 x 6 in.)
Inscriptions: on left side of chin in graphite: Mme K Simpson esquisse pour le portrait / 12 septembre 1909 / A. Rodin
Gift of Mrs. John W. Simpson
1942.5.21 (A-85)
G-001-C, W, 4, case 2 [West Ground Floor Gallery 1C] (20 Nov 2014)



Rodin, Auguste SC
French, 1840 - 1917
Hand of Rodin with a Female Figure, 1917
plaster
overall (greatest extension): 22.9 cm (9 in.)
Gift of Mrs. John W. Simpson
1942.5.22 (A-86)
G-001-C, W, 2, CASE 1 [West Ground Floor Gallery 1C] (07 Jan 2009)

Objects by Auguste Rodin on view at the National Gallery of Art as of February 7, 2017



Rodin, Auguste
French, 1840 - 1917
The Lovers, model mid 1880s, cast after 1900
plaster
overall: 11.1 x 7.5 cm (4 3/8 x 2 15/16 in.)
Gift of Mrs. John W. Simpson
1942.5.23 (A-87)
G-001-C, W, 4, case 2 [West Ground Floor Gallery 1C] (20 Nov 2014)

SC



Rodin, Auguste
French, 1840 - 1917
Head of a Woman, possibly 1880s
plaster
overall: 6.2 x 4.6 x 5.1 cm (2 7/16 x 1 13/16 x 2 in.)
Gift of Mrs. John W. Simpson
1942.5.24 (A-88)
G-001-C, W, 4, case 2 [West Ground Floor Gallery 1C] (20 Nov 2014)

SC



Rodin, Auguste
French, 1840 - 1917
Head of Saint John the Baptist, 1887
plaster
overall (greatest extension): 6.7 cm (2 5/8 in.)
Inscriptions: on back: en Souvenir de Paris / l'an 1907 / a monsieur J.W. / Simpson de / New York en
grande Sym / pathie A Rodin
Gift of Mrs. John W. Simpson
1942.5.25 (A-89)
G-001-C, W, 4, case 2 [West Ground Floor Gallery 1C] (20 Nov 2014)

SC



Rodin, Auguste
French, 1840 - 1917
Figure of a Woman "The Sphinx", model early 1880s, carved 1909
marble
overall: 59 x 62.1 x 58.3 cm (23 1/4 x 24 7/16 x 22 15/16 in.)
Inscriptions: on right side of self-base, near the fingers of the figure: A. Rodin
Gift of Eugene and Agnes E. Meyer
1967.13.6 (A-1729)
G-003, N, 7 [West Ground Floor Gallery 3] (30 Jun 2014)

SC



Rodin, Auguste
French, 1840 - 1917
Gustav Mahler, 1909
bronze
overall: 34.6 x 24.5 x 24.7 cm (13 5/8 x 9 5/8 x 9 3/4 in.)
Inscriptions: on proper left side of neck: A. Rodin; on proper right side of neck, in the back, incised by
hand in model prior to casting: ALEXIS RUDIER / FONDEUR PARIS; on proper left underside of
collarbone in raised letters, integral to cast: A. Rodin
Gift of Lotte Walter Lindt in memory of her father, Bruno Walter
1972.78.1 (A-1738)
G-002, N, 1 [West Ground Floor Gallery 2] (30 Jun 2014)

SC

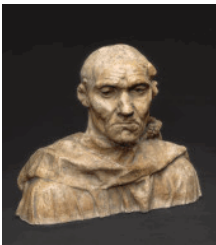
Objects by Auguste Rodin on view at the National Gallery of Art as of February 7, 2017



Rodin, Auguste SC
French, 1840 - 1917
Thomas Fortune Ryan, 1909-1910
bronze
overall: 63 x 51.5 x 29.5 cm (24 13/16 x 20 1/4 x 11 5/8 in.)
Inscriptions: on lower section of left arm in front: A. Rodin; on right shoulder in back: ALEXIS RUDIER / FONDEUR Paris; in relief on interior of left arm: A. Rodin
Gift of Mrs. John Barry Ryan, Jr.
1974.29.1 (A-1759)
G-003, N, 2 [West Ground Floor Gallery 3] (01 Jul 2014)



Carrier-Belleuse, Albert-Ernest, possibly with Auguste Rodin SC
French, 1824 - 1887
French, 1840 - 1917
The Abduction of Hippodamia (L'Enlèvement d'Hippodamie), model 1877/1879, cast after 1877
bronze
overall: 64.8 x 55.6 x 29.2 cm (25 1/2 x 21 7/8 x 11 1/2 in.)
Inscriptions: incised in model beside urn on self-base and enhanced after casting: CaARRIER-BEIIIEUSE (mixed block and cursive characters); embossed in the model, on title plaque on self-base: L'ENLEVEMENT; foundry mark cold-stamped on self-base beneath rear left hoof: BRONZE GARANTI AU TITRE
...
William Nelson Cromwell Fund
1977.58.1 (A-1785)
G-003, CENTER [West Ground Floor Gallery 3] (01 Jul 2014)



Rodin, Auguste SC
French, 1840 - 1917
Jean d'Aire, model 1884-1889, cast probably early 20th century
plaster
overall: 47.6 x 58.4 x 40 cm (18 3/4 x 23 x 15 3/4 in.)
Gift of the B. G. Cantor Art Foundation
1984.85.1
G-002, S, 1, CASE [West Ground Floor Gallery 2] (27 May 2014)

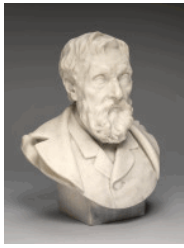


Rodin, Auguste SC
French, 1840 - 1917
Victoria Sackville-West, Lady Sackville, 1913-1914
plaster
overall: 45.7 x 47.6 x 37.5 cm (18 x 18 3/4 x 14 3/4 in.)
Inscriptions: on lower right on back, a red wax seal with initials: HG
Gift of the B. Gerald Cantor Art Foundation
1988.54.1
G-002, E, 1, CASE [West Ground Floor Gallery 2] (28 May 2014)



Rodin, Auguste SC
French, 1840 - 1917
The Age of Bronze (L'Age d'Airain), model 1875-1876, cast 1898
plaster
overall: 180 x 71.1 x 58.4 cm (70 7/8 x 28 x 23 in.)
Inscriptions: on top of base near left foot: Rodin
Gift of Iris and B. Gerald Cantor, in Honor of the 50th Anniversary of the National Gallery of Art
1991.183.1
G-003, W, 1 [West Ground Floor Gallery 3] (18 Jul 2014)

Objects by Auguste Rodin on view at the National Gallery of Art as of February 7, 2017



Rodin, Auguste
French, 1840 - 1917
J.B. van Berckelaer, 1874-1875
marble
height: 47 cm (18 1/2 in.)
Inscriptions: on reverse of self-base: A. Rodin / 1875
Gift of the Iris & B. Gerald Cantor Foundation
2002.139.1
G-003, N, 10 [West Ground Floor Gallery 3] (29 May 2015)

SC



Rodin, Auguste
French, 1840 - 1917
Head of Balzac, model 1897
bronze
overall: 16.5 x 20.9 x 18.1 cm (6 1/2 x 8 1/4 x 7 1/8 in.)
Gift of Elizabeth L. Klee
2005.35.4
G-002, E, 1, CASE [West Ground Floor Gallery 2] (28 May 2014)

SC



Rodin, Auguste
French, 1840 - 1917
Head of Mrs. John Peter Russell (Marianna Mattiocco della Torre), model 1888
bronze
height: 35 cm (13 3/4 in.)
Inscriptions: inscribed on the left side of the neck: A. Rodin; inscribed on the right side of the neck, in the back: Alexis.RUDIER. / Fondateur.PARIS.; in raised letters on the left underside of the neck, integral to the cast: A. Rodin
Gift of Elizabeth L. Klee
2005.35.5
G-005, E, 1, CASE 1 [West Ground Floor Gallery 5] (05 Jun 2014)

SC



Rodin, Auguste
French, 1840 - 1917
Hand of God, model before 1898, cast by 1903
plaster
overall: 73 x 75.57 x 67.31 cm (28 3/4 x 29 3/4 x 26 1/2 in.)
Inscriptions: on face of base below thumb: A Rodin; on face of base below little finger: La Main de Dieu offerte par le / Musée Rodin à Monsieur B. Gerald CANTOR
Gift of Iris & B. Gerald Cantor
2011.100.1
G-003, N, 9 [West Ground Floor Gallery 3] (30 Jun 2014)

SC



Rodin, Auguste
French, 1840 - 1917
Eve, model c. 1881, carved 1890/1891
marble
overall: 76.2 x 24.77 x 30.48 cm (30 x 9 3/4 x 12 in.)
Inscriptions: on the base near the left foot: A. Rodin
Corcoran Collection (William A. Clark Collection)
2014.136.247
G-003, N, 6 [West Ground Floor Gallery 3] (10 Apr 2015)

SC