

Exhibition Checklist:

True to Nature: Open-Air Painting in Europe, 1780–1870

Feb 2–Nov 29, 2020

The exhibition is curated by Mary Morton, curator and head of the department of French paintings, National Gallery of Art, Washington; Ger Luitjen, director, Fondation Custodia, Collection Frits Lugt, Paris; and Jane Munro, keeper of paintings, drawings and prints, Fitzwilliam Museum, Cambridge.

The exhibition is organized by the National Gallery of Art, Washington; the Fondation Custodia, Collection Frits Lugt, Paris; and the Fitzwilliam Museum, Cambridge.

Press Release: <https://www.nga.gov/press/exh/5175.html>

Order Press Images: <https://www.nga.gov/press/exh/5175/images.html>

Press Contact: Isabella Bulkeley, (202) 842-6864 or i-bulkeley@nga.gov

Cat. No. 1 / Object ID: 5175-121

Fleury François Richard (Fleury-Richard)

Artiste en costume Renaissance dessinant dans les arènes de Nîmes/ An Artist in a Renaissance Costume Sketching in the Arena of Nîmes, 1822 (?)

oil on paper, mounted on canvas

paper: 32.4 x 24.4 cm (12 3/4 x 9 5/8 in.)

cardboard: 33.8 x 26 cm (13 5/16 x 10 1/4 in.)

framed: 45 x 37.5 x 41.2 cm (17 11/16 x 14 3/4 x 16 1/4 in.)

Private Collection, London

Cat. No. 2 / Object ID: 5175-016

Jules Coignet

View of Bozen with a Painter, 1837

oil on paper, mounted on canvas

overall: 31 x 39 cm (12 3/16 x 15 3/8 in.)

framed: 43.8 x 51.4 x 5.1 cm (17 1/4 x 20 1/4 x 2 in.)

National Gallery of Art, Washington, Gift of Mrs. John Jay Ide in memory of Mr. and Mrs. William Henry Donner



Cat. No. 3 / Object ID: 5175-035

Théodore Caruelle d'Aligny

Young Man Reclining on the Downs, 1833 - 35

oil on paper, mounted on canvas

overall: 21.6 x 45.2 cm (8 1/2 x 17 13/16 in.)

The Syndics of the Fitzwilliam Museum, University of Cambridge

Cat. No. 4 / Object ID: 5175-018

André Giroux

Forest Interior with a Waterfall, Papigno, 1825/30

oil on paper

overall: 29.5 x 44.5 cm (11 5/8 x 17 1/2 in.)

framed: 42.6 x 57.5 x 5.6 cm (16 3/4 x 22 5/8 x 2 3/16 in.)

National Gallery of Art, Washington, Gift of Mrs. John Jay Ide in memory of Mr. and Mrs. William Henry Donner

Cat. No. 5 / Object ID: 5175-123

Louise-Joséphine Sarazin de Belmont
Vues de Pyrénées/ Views of the Pyrenees, 1790 - 1870

oil on paper, mounted on wood panel
paper: 22 x 30.7 cm (8 11/16 x 12 1/16 in.)
panel: 22.6 x 31.7 cm (8 7/8 x 12 1/2 in.)
paper: 14.6 x 19.1 cm (5 3/4 x 7 1/2 in.)
panel: 15.2 x 19.6 cm (6 x 7 11/16 in.)
paper: 22.3 x 30.7 cm (8 3/4 x 12 1/16 in.)
panel: 22.9 x 31.3 cm (9 x 12 5/16 in.)
paper: 31 x 22.5 cm (12 3/16 x 8 7/8 in.)
panel: 31.3 x 22.9 cm (12 5/16 x 9 in.)
paper: 30.7 x 24.2 cm (12 1/16 x 9 1/2 in.)
panel: 31.4 x 24.6 cm (12 3/8 x 9 11/16 in.)
paper: 30.7 x 22.4 cm (12 1/16 x 8 13/16 in.)
panel: 31.5 x 22.3 cm (12 3/8 x 8 3/4 in.)
paper: 23.7 x 30.7 cm (9 5/16 x 12 1/16 in.)
panel: 24.2 x 31.2 cm (9 1/2 x 12 5/16 in.)
paper: 23.5 x 14.2 cm (9 1/4 x 5 9/16 in.)
panel: 24 x 14.7 cm (9 7/16 x 5 13/16 in.)
paper: 23.4 x 30.4 cm (9 3/16 x 11 15/16 in.)
panel: 24.2 x 31.2 cm (9 1/2 x 12 5/16 in.)
framed: 95 x 100 x 4 cm (37 3/8 x 39 3/8 x 1 9/16 in.)
Private Collection, London

Cat. No. 7 / Object ID: 5175-036

Eugène Decan
Corot at his Easel, Crécy-en-Brie,

oil on canvas
overall: 31.1 x 40.3 cm (12 1/4 x 15 7/8 in.)
The Syndics of the Fitzwilliam Museum, University of Cambridge

Cat. No. 8 / Object ID: 5175-017

André Giroux
Forest Interior with a Painter, Civita Castellana, 1825-30

oil on paper
overall: 29 x 44 cm (11 7/16 x 17 5/16 in.)
framed: 42.2 x 59.4 x 5.4 cm (16 5/8 x 23 3/8 x 2 1/8 in.)
National Gallery of Art, Washington, Gift of Mrs. John Jay Ide in memory of Mr. and Mrs. William Henry Donner

Cat. No. 9 / Object ID: 5175-108

Anonymous French (?), 1st half 19th century
Study of a Tree,

oil on paper, mounted on cardboard
Paper: 34.7 x 26.7 cm (13 11/16 x 10 1/2)
Cardboard: 35 x 26.9 cm (13 3/4 x 10 9/16 in.)
framed: 49.8 x 42.4 x 4.6 cm (19 5/8 x 16 11/16 x 1 13/16 in.)
Private Collection, London

Cat. No. 10 / Object ID: 5175-140

Robert-Léopold Leprince
Study of Trees, c. 1820

oil on paper, mounted on canvas
overall: 26.2 x 22.7 cm (10 5/16 x 8 15/16 in.)
framed: 44 x 40.7 x 5 cm (17 5/16 x 16 x 1 15/16 in.)
Fondation Custodia, Collection Frits Lugt, Paris. Gift Catherine Sterling, Tinos (Greece)

Cat. No. 11 / Object ID: 5175-149

Joseph Mallord William Turner
A Beech Wood with Gypsies seated in the Distance, c. 1799-1801

oil on paper, mounted on panel
overall: 27.6 x 19.9 cm (10 7/8 x 7 13/16 in.)
The Syndics of the Fitzwilliam Museum, University of Cambridge

Cat. No. 12 / Object ID: 5175-148

Joseph Mallord William Turner

A Beech Wood with Gypsies round a Campfire, c. 1799-1801

oil on paper, mounted on panel

overall: 27.6 x 19.9 cm (10 7/8 x 7 13/16 in.)

The Syndics of the Fitzwilliam Museum, University of Cambridge

Cat. No. 13 / Object ID: 5175-052

attributed to François Diday

Uprooted Tree, 1802 - 1877

oil on canvas

overall: 21.6 x 29.3 cm (8 1/2 x 11 9/16 in.)

framed: 31.7 x 40.2 x 1.3 cm (12 1/2 x 15 13/16 x 1/2 in.)

Fondation Custodia, Collection Frits Lugt, Paris

Cat. No. 14 / Object ID: 5175-050

Anton Sminck Pitloo

Study of a Fallen Dead Tree, c. 1820-30

oil on paper, mounted on cardboard

overall: 28.1 x 38.2 cm (11 1/16 x 15 1/16 in.)

framed: 37.8 x 48.4 x 2.7 cm (14 7/8 x 19 1/16 x 1 1/16 in.)

Fondation Custodia, Collection Frits Lugt, Paris

Cat. No. 15 / Object ID: 5175-139

Pierre-Henri de Valenciennes

Study of a Tree in the Bois de Boulogne, c. 1790

oil on paper, mounted on cardboard

overall: 33.9 x 25.6 cm (13 3/8 x 10 1/16 in.)

framed: 42.8 x 34.8 x 3.2 cm (16 7/8 x 13 11/16 x 1 1/4 in.)

Fondation Custodia, Collection Frits Lugt, Paris. Gift en lieu de succession by Jérôme Binda, Tinos (Greece)

Cat. No. 16 / Object ID: 5175-138

Simon Denis

Trees in Front of a Valley, 1755 - 1812

oil on canvas

overall: 68.8 x 91.1 cm (27 1/16 x 35 7/8 in.)

framed: 87.9 x 110.5 x 8 cm (34 5/8 x 43 1/2 x 3 1/8 in.)

Fondation Custodia, Collection Frits Lugt, Paris

Cat. No. 17 / Object ID: 5175-147

John Constable

East Bergholt, 1808

oil on millboard

overall: 16.6 x 25.25 cm (6 9/16 x 9 15/16 in.)

The Syndics of the Fitzwilliam Museum, University of Cambridge

Cat. No. 19 / Object ID: 5175-022

Achille-Etna Michallon

The Oak and the Reed, 1816

oil on canvas

overall: 43.5 x 53.5 cm (17 1/8 x 21 1/16 in.)

framed: 51.8 x 63.2 x 8.7 cm (20 3/8 x 24 7/8 x 3 7/16 in.)

The Syndics of the Fitzwilliam Museum, University of Cambridge

Cat. No. 20 / Object ID: 5175-048

Fritz Petzholdt

Tree Crowns in a Forest (Ariccia?), c. 1832

oil on paper

paper: 34.6 x 51.8 cm (13 5/8 x 20 3/8 in.)

canvas: 35.4 x 52.6 cm (13 15/16 x 20 11/16 in.)

framed: 45.1 x 62.3 x 5.6 cm (17 3/4 x 24 1/2 x 2 3/16 in.)

Fondation Custodia, Collection Frits Lugt, Paris. Gift John Schlichte Bergen and Alexandra van Nierop, Amsterdam

Cat. No. 21 / Object ID: 5175-047

Janus La Cour

Olive Trees near Tivoli, 1869

oil on canvas

overall: 37.4 x 60.5 cm (14 3/4 x 23 13/16 in.)

framed: 49.1 x 72.2 x 3.5 cm (19 5/16 x 28 7/16 x 1 3/8 in.)

Fondation Custodia, Collection Frits Lugt, Paris

Cat. No. 22 / Object ID: 5175-001

Jean-Joseph-Xavier Bidauld

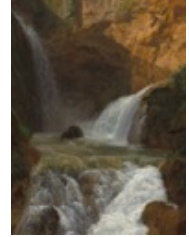
View of the Waterfalls at Tivoli, 1788

oil on paper, mounted on canvas

overall: 50.8 x 38.1 cm (20 x 15 in.)

framed: 67.3 x 54.6 x 5.1 cm (26 1/2 x 21 1/2 x 2 in.)

National Gallery of Art, Washington, Gift of Fern and George Wachter



Cat. No. 23 / Object ID: 5175-043

Auguste Bonheur

Salins Waterfall in Apchon (Cantal), 1824 - 1884

oil on canvas

overall: 41.5 x 32 cm (16 5/16 x 12 5/8 in.)

framed: 50.7 x 31.6 x 2.8 cm (19 15/16 x 12 7/16 x 1 1/8 in.)

Fondation Custodia, Collection Frits Lugt, Paris

Cat. No. 24 / Object ID: 5175-041

Christian Ernst Bernhard Morgenstern

Waterfall in the River Traun, Bavaria, 1826

oil on paper

paper: 28 x 36.4 cm (11 x 14 5/16 in.)

modern cardboard: 29.3 x 37.9 cm (11 9/16 x 14 15/16 in.)

framed: 38.4 x 47 x 4 cm (15 1/8 x 18 1/2 x 1 9/16 in.)

Fondation Custodia, Collection Frits Lugt, Paris

Cat. No. 25 / Object ID: 5175-107

Heinrich Reinhold

Vague sur la côte de Sorrente/ Waves on the Sorrento Coast, 1823

oil on paper, mounted on canvas

paper: 17.4 x 26.5 cm (6 7/8 x 10 7/16 in.)

canvas: 18 x 27 cm (7 1/16 x 10 5/8 in.)

framed: 27.2 x 36.1 x 5.5 cm (10 11/16 x 14 3/16 x 2 3/16 in.)

Private Collection, London

Cat. No. 26 / Object ID: 5175-135

Baron François Gerard

A Study of Waves breaking against Rocks at Sunset, 1770 - 1837

oil on millboard

overall: 31.2 x 38.5 cm (12 5/16 x 15 3/16 in.)

framed: 45.3 x 52.1 x 4 cm (17 13/16 x 20 1/2 x 1 9/16 in.)

Private Collection, London



Cat. No. 27 / Object ID: 5175-020

Carl Frederik Sørensen

Rough Sea beside a Jetty, 1849

oil on canvas

overall: 31.9 x 45.4 cm (12 9/16 x 17 7/8 in.)

framed: 43.6 x 57.7 x 5.6 cm (17 3/16 x 22 11/16 x 2 3/16 in.)

The Syndics of the Fitzwilliam Museum, University of Cambridge

Cat. No. 28 / Object ID: 5175-044

Théodore Guদিন

Seascape during a Storm seen from the Ship "Le Véloce", 1839

oil on paper, mounted on wood panel

overall: 31 x 39.3 cm (12 3/16 x 15 1/2 in.)

framed: 40.6 x 49 x 4.3 cm (16 x 19 5/16 x 1 11/16 in.)

Fondation Custodia, Collection Frits Lugts, Paris

Cat. No. 29 / Object ID: 5175-039

Johann Carl Neumann

Sand Dunes at Skagen Beach,

oil on paper, mounted on canvas

paper: 24.6 x 37.6 cm (9 11/16 x 14 13/16 in.)

canvas: 25.2 x 37.9 cm (9 15/16 x 14 15/16 in.)

framed: 31.6 x 44.2 x 3.2 cm (12 7/16 x 17 3/8 x 1 1/4 in.)

Fondation Custodia, Collection Frits Lugt, Paris

Cat. No. 30 / Object ID: 5175-040

Carl Blechen

View of the Baltic Coast, 1798 - 1840

oil on wood panel

overall: 8.2 x 19.1 cm (3 1/4 x 7 1/2 in.)

framed: 11.9 x 22.7 x 2.1 cm (4 11/16 x 8 15/16 x 13/16 in.)

Fondation Custodia, Collection Frits Lugt, Paris

Cat. No. 31 / Object ID: 5175-019

Richard Parkes Bonington

Dezzenano, Lake Garda, 1826

oil on millboard

overall: 25.6 x 33 cm (10 1/16 x 13 in.)

framed: 36.7 x 44.9 x 5.6 cm (14 7/16 x 17 11/16 x 2 3/16 in.)

The Syndics of the Fitzwilliam Museum, University of Cambridge



Cat. No. 32 / Object ID: 5175-101

Eugène Isabey

Rocks at Cran aux Œufs near Calais, 1832

oil on paper, mounted on canvas

paper and canvas: 28.3 x 37.3 cm (11 1/8 x 14 11/16 in.)

framed: 40.3 x 49 x 4.5 cm (15 7/8 x 19 5/16 x 1 3/4 in.)

Fondation Custodia, Collection Frits Lugt, Paris

Cat. No. 33 / Object ID: 5175-045

Eugène Isabey

View of the Fort de Bertheaume, 1850

oil on paper, mounted on canvas

overall: 30.3 x 63.3 cm (11 15/16 x 24 15/16 in.)

framed: 45.2 x 77.9 x 4 cm (17 13/16 x 30 11/16 x 1 9/16 in.)

Fondation Custodia, Collection Frits Lugt, Paris



Cat. No. 34 / Object ID: 5175-124

Alexandre Calame

Boulders by a Lake, 1857-61

oil on paper, mounted on canvas

paper: 32 x 46 cm (12 5/8 x 18 1/8 in.)

canvas: 32.3 x 46.4 cm (12 11/16 x 18 1/4 in.)

framed: 45 x 58.8 x 5.5 cm (17 11/16 x 23 1/8 x 2 3/16 in.)

Private Collection, London

Cat. No. 35 / Object ID: 5175-046

Odilon Redon

Village on the Coast of Brittany, 1840 - 1916

oil on paper, mounted on canvas

paper: 20.5 x 35.8 cm (8 1/16 x 14 1/8 in.)

canvas: 21.1 x 36.3 cm (8 5/16 x 14 5/16 in.)

framed: 27.3 x 42.3 x 3.7 cm (10 3/4 x 16 5/8 x 1 7/16 in.)

Fondation Custodia, Collection Frits Lugt, Paris

Cat. No. 36 / Object ID: 5175-126

Vilhelm Kyhn

Paysage de Haute-Savoie avec artiste travaillant sur le motif/ Landscape in the Haute-Savoie, with an Artist working in the Open Air,

oil on paper, mounted on cardboard

paper: 40.9 x 32.5 cm (16 1/8 x 12 13/16 in.)

cardboard: 41.2 x 32.6 cm (16 1/4 x 12 13/16 in.)

canvas: 42 x 33.3 cm (16 9/16 x 13 1/8 in.)

framed: 54.4 x 46.5 x 6.2 cm (21 7/16 x 18 5/16 x 2 7/16 in.)

Private Collection, London

Cat. No. 37 / Object ID: 5175-096

Vilhelm Kyhn

Rocks in Low Water, 1860

oil on canvas

overall: 26.4 x 40.8 cm (10 3/8 x 16 1/16 in.)

framed: 36.1 x 50.4 x 5.2 cm (14 3/16 x 19 13/16 x 2 1/16 in.)

Fondation Custodia, Collection Frits Lugt, Paris

Cat. No. 38 / Object ID: 5175-099

Carl Wilhelm Götzloff

Limestone Rocks, Sorrento, 1858

oil on paper, mounted on cardboard

overall: 30.5 x 38 cm (12 x 14 15/16 in.)

framed: 37.5 x 45 x 3.5 cm (14 3/4 x 17 11/16 x 1 3/8 in.)

Fondation Custodia, Collection Frits Lugt, Paris

Cat. No. 39 / Object ID: 5175-127

Anonymous French, 19th century

La Roche qui pleure, gorges de Franchard, forêt de Fontainebleau/ The Weeping Rock, Franchard Gorge, Fontainebleau Forest,

oil on paper, mounted on cardboard

paper: 14.1 x 29.5 cm (5 9/16 x 11 5/8 in.)

cardboard: 14.5 x 30.5 cm (5 11/16 x 12 in.)

framed: 21 x 37 x 2 cm (8 1/4 x 14 9/16 x 13/16 in.)

Private Collection, London

Cat. No. 40 / Object ID: 5175-125

Joseph-Désiré Court

Etude de rochers/ Study of Rocks,

oil on paper, mounted on canvas

paper: 26.2 x 39.5 cm (10 5/16 x 15 9/16 in.)

canvas: 26.8 x 39.8 cm (10 9/16 x 15 11/16 in.)

framed: 34.4 x 47.5 x 3.3 cm (13 9/16 x 18 11/16 x 1 5/16 in.)

Private Collection, London

Cat. No. 41 / Object ID: 5175-128

Louise-Joséphine Sarazin de Belmont

Grotto in a Rocky Landscape, 1790 - 1870

oil on paper, mounted on canvas

paper: 41.2 x 56.6 cm (16 1/4 x 22 5/16 in.)

overall: 42.2 x 57.4 cm (16 5/8 x 22 5/8 in.)

framed: 54 x 69 x 5 cm (21 1/4 x 27 3/16 x 1 15/16 in.)

Private Collection, London



Cat. No. 42 / Object ID: 5175-100

Jean-Baptiste Aldolphe Gibert

Interior of a Cave,

oil on paper

overall: 28.5 x 43.8 cm (11 1/4 x 17 1/4 in.)

framed: 38.1 x 53.6 x 2 cm (15 x 21 1/8 x 13/16 in.)

Fondation Custodia, Collection Frits Lugt, Paris

Cat. No. 43 / Object ID: 5175-097

Martinus Rørbye

Hunter in a Grotto in Cervara, 1835

oil on paper, mounted on canvas

overall: 20.2 x 31.6 cm (7 15/16 x 12 7/16 in.)

framed: 27.6 x 38.9 x 3.5 cm (10 7/8 x 15 5/16 x 1 3/8 in.)

Fondation Custodia, Collection Frits Lugt, Paris

Cat. No. 44 / Object ID: 5175-137

Louise-Joséphine Sarazin de Belmont

Rocky Coast with Bathers, 1835

oil on paper, mounted on cardboard

paper: 13.5 x 18.3 cm (5 5/16 x 7 3/16 in.)

cardboard: 14.1 x 19.2 cm (5 9/16 x 7 9/16 in.)

framed: 18.8 x 23.8 x 1.5 cm (7 3/8 x 9 3/8 x 9/16 in.)

Fondation Custodia, Collection Frits Lugt, Paris

Cat. No. 45 / Object ID: 5175-034

Thomas Jones

Scene near Naples, 1783

oil on paper

overall: 29.4 x 39.6 cm (11 9/16 x 15 9/16 in.)

framed: 34 x 44.6 x 5.5 cm (13 3/8 x 17 9/16 x 2 3/16 in.)

The Syndics of the Fitzwilliam Museum, University of Cambridge

Cat. No. 47 / Object ID: 5175-033

Anicet-Charles-Gabriel Lemonnier

Vesuvius in Eruption, 1779

oil on paper

overall: 27.8 x 36.3 cm (10 15/16 x 14 5/16 in.)

framed: 42 x 50 x 6 cm (16 9/16 x 19 11/16 x 2 3/8 in.)

The Syndics of the Fitzwilliam Museum, University of Cambridge

Cat. No. 48 / Object ID: 5175-015

Simon Denis

View near Naples, c. 1806

oil on paper, mounted on canvas

overall: 31.2 x 41.8 cm (12 5/16 x 16 7/16 in.)

framed: 40.3 x 51.6 x 5.6 cm (15 7/8 x 20 5/16 x 2 3/16 in.)

National Gallery of Art, Washington, Chester Dale Fund

Cat. No. 49 / Object ID: 5175-134

Louise-Joséphine Sarazin de Belmont

The Roman Theatre at Taormina, 1828

oil on paper, mounted on canvas

overall: 43.2 x 59.7 cm (17 x 23 1/2 in.)

framed: 55.9 x 71.8 x 5.1 cm (22 x 28 1/4 x 2 in.)

National Gallery of Art, Washington, Gift of Frank Anderson Trapp

Cat. No. 50 / Object ID: 5175-037

Jean-Joseph-Xavier Bidauld

View of the Bridge and the Town of Cava, Kingdom of Naples, 1758 - 1846

oil on paper, mounted on canvas

overall: 21.2 x 28.1 cm (8 3/8 x 11 1/16 in.)

framed: 30 x 36.9 x 6 cm (11 13/16 x 14 1/2 x 2 3/8 in.)

The Syndics of the Fitzwilliam Museum, University of Cambridge

Cat. No. 51 / Object ID: 5175-088

André Giroux

View of the Vesuvius Seen from the Ruins of Pompeii, c. 1827

oil on paper, mounted on canvas

paper: 20 x 38 cm (7 7/8 x 14 15/16 in.)

canvas: 20.7 x 38.8 cm (8 1/8 x 15 1/4 in.)

framed: 28.4 x 46.4 x 4 cm (11 3/16 x 18 1/4 x 1 9/16 in.)

Fondation Custodia, Collection Frits Lugt, Paris

Cat. No. 52 / Object ID: 5175-087

Louis Léopold Robert
View of Naples with Vesuvius, 1821

oil on paper, mounted on canvas
paper: 18.1 x 28.4 cm (7 1/8 x 11 3/16 in.)
canvas: 18.5 x 28.6 cm (7 5/16 x 11 1/4 in.)
framed: 30.4 x 40.1 x 3.1 cm (11 15/16 x 15 13/16 x 1 1/4 in.)

Fondation Custodia, Collection Frits Lugt, Paris. Bequest Carlos van Hasselt and Andrzej Niewęglowski

Cat. No. 53 / Object ID: 5175-032

Johan Christian Dahl
The Neapolitan Coast with Vesuvius in Eruption, 1820

oil on paper, mounted on canvas
overall: 22.9 x 33.8 cm (9 x 13 5/16 in.)
framed: 31.7 x 42.3 x 4.8 cm (12 1/2 x 16 5/8 x 1 7/8 in.)

The Syndics of the Fitzwilliam Museum, University of Cambridge

Cat. No. 54 / Object ID: 5175-120

Jean-Charles Rémond
Eruption de Stromboli, le 30 août 1842/ The Eruption of the Stromboli, 30 August 1842, 1842

oil on paper, mounted on canvas
paper: 26.1 x 36.6 cm (10 1/4 x 14 7/16 in.)
cardboard: 27 x 37 cm (10 5/8 x 14 9/16 in.)
framed: 35.6 x 45.6 x 3.7 cm (14 x 17 15/16 x 1 7/16 in.)

Private Collection, London



Cat. No. 55 / Object ID: 5175-089

Giuseppe de Nittis
Eruption of the Vesuvius, 1872

oil on wood panel
overall: 25.4 x 15.9 cm (10 x 6 1/4 in.)
framed: 37.2 x 26.7 x 3.5 cm (14 5/8 x 10 1/2 x 1 3/8 in.)

Fondation Custodia, Collection Frits Lugt, Paris

Cat. No. 56 / Object ID: 5175-014

Pierre-Henri de Valenciennes
Study of Clouds over the Roman Campagna, c. 1782/85

oil on paper, mounted on cardboard
overall (paper support): 19 x 32.1 cm (7 1/2 x 12 5/8 in.)
overall (paperboard support): 19.6 x 33 cm (7 11/16 x 13 in.)
framed: 30.5 x 43.2 x 2.1 cm (12 x 17 x 13/16 in.)

National Gallery of Art, Washington, Given in honor of Gaillard F. Ravenel II by his friends

Cat. No. 57 / Object ID: 5175-013

Jean Honoré Fragonard
Mountain Landscape at Sunset, c. 1765

oil on paper
overall: 21.5 x 32.8 cm (8 7/16 x 12 15/16 in.)
framed: 32.2 x 43.5 x 4.4 cm (12 11/16 x 17 1/8 x 1 3/4 in.)

National Gallery of Art, Washington, Chester Dale Fund

Cat. No. 58 / Object ID: 5175-085

Anonymous French, 18th Century
Clouds passing through a Valley, c. 1770

oil on paper
paper and canvas: 38.4 x 60.1 cm (15 1/8 x 23 11/16 in.)
framed: 48.5 x 69.5 x 4 cm (19 1/8 x 27 3/8 x 1 9/16 in.)

Fondation Custodia, Collection Frits Lugt, Paris

Cat. No. 59 / Object ID: 5175-114

Simon Denis

Vue de Tivoli la nuit/ View of Tivoli at Night,

oil on paper

paper: 19.3 x 30.1 cm (7 5/8 x 11 7/8 in.)

stretcher: 20 x 30.6 cm (7 7/8 x 12 1/16 in.)

framed: 32.5 x 43 x 3.5 cm (12 13/16 x 16 15/16 x 1 3/8 in.)

Private Collection, London

Cat. No. 60 / Object ID: 5175-143

Georges Michel

View of Paris seen from Meudon,

oil on paper, mounted on wood panel

overall: 73.7 x 93 cm (29 x 36 5/8 in.)

framed: 94.4 x 113.3 x 7 cm (37 3/16 x 44 5/8 x 2 3/4 in.)

Fondation Custodia, Collection Frits Lugt, Paris

Cat. No. 61 / Object ID: 5175-012

John Constable

Cloud Study: Stormy Sunset, 1821-22

oil on paper, mounted on canvas

overall: 20.3 x 27.3 cm (8 x 10 3/4 in.)

framed: 34 x 41.6 x 6.4 cm (13 3/8 x 16 3/8 x 2 1/2 in.)

National Gallery of Art, Washington, Gift of Louise Mellon in honor of Mr. and Mrs. Paul Mellon



Cat. No. 62 / Object ID: 5175-029

John Constable

Sky Study with a Shaft of Sunlight, 1822 (?)

oil on paper

overall: 13.6 x 15 cm (5 3/8 x 5 7/8 in.)

framed: 36 x 40 x 4.7 cm (14 3/16 x 15 3/4 x 1 7/8 in.)

The Syndics of the Fitzwilliam Museum, University of Cambridge

Cat. No. 63 / Object ID: 5175-083

Anton Sminck Pitloo

Sunrise in a Landscape, c. 1811-19

oil on paper, mounted on canvas

paper and canvas: 21.1 x 27.8 cm (8 5/16 x 10 15/16 in.)

framed: 28.6 x 35.1 x 1.7 cm (11 1/4 x 13 13/16 x 11/16 in.)

Fondation Custodia, Collection Frits Lugt, Paris. Gift Gerhard and Dineke Greidanus, Amsterdam

Cat. No. 64 / Object ID: 5175-084

Anton Sminck Pitloo

Sunset in a Landscape, c. 1811 - 19

oil on paper, mounted on canvas

paper and canvas: 21 x 27.8 cm (8 1/4 x 10 15/16 in.)

framed: 28.5 x 35.3 x 1.6 cm (11 1/4 x 13 7/8 x 5/8 in.)

Fondation Custodia, Collection Frits Lugt, Paris. Gift Gerhard and Dineke Greidanus, Amsterdam

Cat. No. 65 / Object ID: 5175-119

Johann Jakob Frey

Cloud Study (1),

oil on paper, mounted on canvas

overall: 28.9 x 44.6 cm (11 3/8 x 17 9/16 in.)

canvas: 29.6 x 45.3 cm (11 5/8 x 17 13/16 in.)

framed: 39.4 x 54.6 x 3.8 cm (15 1/2 x 21 1/2 x 1 1/2 in.)

Private Collection, London

Cat. No. 66 / Object ID: 5175-118

Johann Jakob Frey

Cloud Study (2),

oil on paper, mounted on canvas

overall: 29.4 x 44.9 cm (11 9/16 x 17 11/16 in.)

canvas: 29.6 x 45.3 cm (11 5/8 x 17 13/16 in.)

framed: 39.4 x 54.6 x 3.8 cm (15 1/2 x 21 1/2 x 1 1/2 in.)

Private Collection, London

Cat. No. 67 / Object ID: 5175-117

Johann Jakob Frey

Cloud Study (3),

oil on paper, mounted on canvas

overall: 29.4 x 44.6 cm (11 9/16 x 17 9/16 in.)

canvas: 30.2 x 45.3 cm (11 7/8 x 17 13/16 in.)

framed: 39.4 x 54.6 x 3.8 cm (15 1/2 x 21 1/2 x 1 1/2 in.)

Private Collection, London

Cat. No. 68 / Object ID: 5175-116

Johann Jakob Frey

Cloud Study (4),

oil on paper, mounted on canvas

overall: 29.4 x 44.3 cm (11 9/16 x 17 7/16 in.)

canvas: 30 x 44.8 cm (11 13/16 x 17 5/8 in.)

framed: 39.4 x 54.6 x 3.8 cm (15 1/2 x 21 1/2 x 1 1/2 in.)

Private Collection, London

Cat. No. 69 / Object ID: 5175-030

Edgar Degas

Castel Sant' Elmo, from Capodimonte, c. 1856

oil on paper, mounted on canvas

overall: 20 x 27 cm (7 7/8 x 10 5/8 in.)

framed: 30 x 37.8 x 5.8 cm (11 13/16 x 14 7/8 x 2 5/16 in.)

The Syndics of the Fitzwilliam Museum, University of Cambridge

Cat. No. 70 / Object ID: 5175-133

Jean-Charles Rémond

Paysage montagneux brumeux (ou Vue de Monticelli, prêt de Tivoli)/ Misty Mountain Landscape (or View of Monticelli, near Tivoli), 1829

oil on paper, mounted on canvas

paper: 20.5 x 30 cm (8 1/16 x 11 13/16 in.)

canvas: 21 x 30.5 cm (8 1/4 x 12 in.)

framed: 30.5 x 39.7 x 4 cm (12 x 15 5/8 x 1 9/16 in.)

Private Collection, London

Cat. No. 71 / Object ID: 5175-132

Anton Melbye

Skrim (Kongsberg, Norvège)/ Skrim (Kongsberg, Norway), 1846

oil on paper, mounted on cardboard

paper: 11 x 29.4 cm (4 5/16 x 11 9/16 in.)

cardboard: 12 x 30 cm (4 3/4 x 11 13/16 in.)

framed: 17.4 x 35 x 2 cm (6 7/8 x 13 3/4 x 13/16 in.)

Private Collection, London

Cat. No. 72 / Object ID: 5175-038

Alexandre Calame

Storm at Handeck, 1838

oil on canvas

overall: 22.7 x 31 cm (8 15/16 x 12 3/16 in.)

framed: 38 x 46.5 x 6 cm (14 15/16 x 18 5/16 x 2 3/8 in.)

The Syndics of the Fitzwilliam Museum, University of Cambridge

Cat. No. 73 / Object ID: 5175-131

Maria Rosalie (Rosa) Bonheur

Paysage brumeux/ Misty Landscape,

oil on paper, mounted on cardboard

paper: 15.3 x 31.2 cm (6 x 12 5/16 in.)

overall: 15.8 x 31.7 cm (6 1/4 x 12 1/2 in.)

framed: 22.6 x 38.2 x 3.5 cm (8 7/8 x 15 1/16 x 1 3/8 in.)

Private Collection, London

Cat. No. 74 / Object ID: 5175-136

William Holman Hunt

The Thames at Chelsea, Evening, 1853

oil on panel

overall: 15.2 x 20.3 cm (6 x 8 in.)

The Syndics of the Fitzwilliam Museum, University of Cambridge

Cat. No. 75 / Object ID: 5175-086

Charles Nègre

Nocturnal View from the Quai du Louvre in Paris, c. 1850

oil on canvas

overall: 16.9 x 22.9 cm (6 5/8 x 9 in.)

framed: 25.9 x 31.6 x 3.4 cm (10 3/16 x 12 7/16 x 1 5/16 in.)

Fondation Custodia, Collection Frits Lugt, Paris

Cat. No. 76 / Object ID: 5175-006

Théodore Rousseau

Panoramic Landscape near the River Moselle, c. 1830

oil on canvas

overall: 22.1 x 75.9 cm (8 11/16 x 29 7/8 in.)

framed: 47.6 x 101 x 7 cm (18 3/4 x 39 3/4 x 2 3/4 in.)

National Gallery of Art, Washington, Chester Dale Fund

Cat. No. 77 / Object ID: 5175-150

Théodore Rousseau

Panoramic Landscape near the River Moselle, c. 1830- 40

oil on canvas

overall: 26.6 x 56.1 cm (10 1/2 x 22 1/16 in.)

framed: 43.6 x 57.7 x 5.6 cm (17 3/16 x 22 11/16 x 2 3/16 in.)

The Syndics of the Fitzwilliam Museum, University of Cambridge

Cat. No. 78 / Object ID: 5175-072

Théodore Rousseau

Village near the River Moselle, c. 1832

oil on paper, mounted on wood panel

overall: 15 x 31.8 cm (5 7/8 x 12 1/2 in.)

framed: 27.3 x 44.2 x 4.5 cm (10 3/4 x 17 3/8 x 1 3/4 in.)

Fondation Custodia, Collection Frits Lugt, Paris

Cat. No. 79 / Object ID: 5175-051

Max Hauschild

Vines seen through a Window,

Oil on paper

overall: 13.2 x 12.1 cm (5 3/16 x 4 3/4 in.)

framed: 20.2 x 19.2 x 2 cm (7 15/16 x 7 9/16 x 13/16 in.)

Fondation Custodia, Collection Frits Lugt, Paris

Cat. No. 81 / Object ID: 5175-064

Frederik Niels Martin Rohde

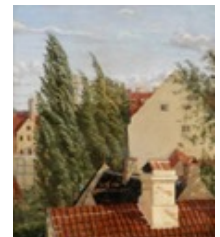
Rooftops,

oil on canvas

overall: 25.4 x 22.2 cm (10 x 8 3/4 in.)

framed: 37.4 x 33.4 x 5 cm (14 3/4 x 13 1/8 x 1 15/16 in.)

Fondation Custodia, Collection Frits Lugt, Paris



Cat. No. 82 / Object ID: 5175-062

Constantin Hansen

View of Christianborg Palace in Copenhagen,

oil on canvas

overall: 42.2 x 33 cm (16 5/8 x 13 in.)

framed: 51.6 x 42.5 x 3.5 cm (20 5/16 x 16 3/4 x 1 3/8 in.)

Fondation Custodia, Collection Frits Lugt, Paris

Cat. No. 83 / Object ID: 5175-065

Frederik Sødring

The Monastery of Alpirsbach near Freudenstadt (Black Forest), late 1830s

oil on paper, mounted on board

overall: 40.4 x 57.3 cm (15 7/8 x 22 9/16 in.)

framed: 48.8 x 66.7 x 4.5 cm (19 3/16 x 26 1/4 x 1 3/4 in.)

Fondation Custodia, Collection Frits Lugt, Paris

Cat. No. 84 / Object ID: 5175-070

Auguste-Xavier Leprince

Interior of a Courtyard, c. 1820

oil on paper, mounted on canvas

paper: 21.5 x 29.3 cm (8 7/16 x 11 9/16 in.)

canvas: 22.1 x 29.6 cm (8 11/16 x 11 5/8 in.)

framed: 43.2 x 49.8 cm (17 x 19 5/8 in.)

Fondation Custodia, Collection Frits Lugt, Paris

Cat. No. 85 / Object ID: 5175-071

Robert Léopold Leprince

Farm Courtyard,

oil on paper, mounted on canvas

paper: 22.9 x 29.9 cm (9 x 11 3/4 in.)

canvas: 23.3 x 30.4 cm (9 3/16 x 11 15/16 in.)

framed: 35.9 x 42.9 x 4.5 cm (14 1/8 x 16 7/8 x 1 3/4 in.)

Fondation Custodia, Collection Frits Lugt, Paris

Cat. No. 86 / Object ID: 5175-021

Augustus Leopold Egg

The Farmyard,

oil on board

overall: 20.2 x 25.3 x 1.9 cm (7 15/16 x 9 15/16 x 3/4 in.)

framed: 27.1 x 31.8 x 3.8 cm (10 11/16 x 12 1/2 x 1 1/2 in.)

The Syndics of the Fitzwilliam Museum, University of Cambridge

Cat. No. 87 / Object ID: 5175-074

Attributed to Eugène Isabey

Ruins of the Théâtre-Italien after the Fire of 1838, 1839

oil on canvas

overall: 46 x 55 cm (18 1/8 x 21 5/8 in.)

framed: 56.6 x 67.8 x 5.7 cm (22 5/16 x 26 11/16 x 2 1/4 in.)

Fondation Custodia, Collection Frits Lugt, Paris

Cat. No. 88 / Object ID: 5175-028

André Giroux

A View of Rome, before 1831

oil on paper, mounted on canvas

overall: 21 x 29.7 cm (8 1/4 x 11 11/16 in.)

framed: 29.1 x 37.7 x 5.7 cm (11 7/16 x 14 13/16 x 2 1/4 in.)

The Syndics of the Fitzwilliam Museum, University of Cambridge

Cat. No. 89 / Object ID: 5175-078

Pierre-Henri de Valenciennes

View of Rome, 1782 - 85

oil on paper, mounted on canvas

paper: 18.2 x 25.1 cm (7 3/16 x 9 7/8 in.)

canvas: 19 x 29.9 cm (7 1/2 x 11 3/4 in.)

framed: 35.5 x 43.1 x 6.5 cm (14 x 16 15/16 x 2 9/16 in.)

Fondation Custodia, Collection Frits Lugt, Paris

Cat. No. 90 / Object ID: 5175-076

Louis Dupré

View of Santa Trinità dei Monti in Rome, c. 1817

oil on paper, mounted on canvas

paper: 25.3 x 46 cm (9 15/16 x 18 1/8 in.)

canvas: 25.9 x 46.3 cm (10 3/16 x 18 1/4 in.)

framed: 38.2 x 58.8 x 5 cm (15 1/16 x 23 1/8 x 1 15/16 in.)

Fondation Custodia, Collection Frits Lugt, Paris. Gift Jacques and Brigitte Gairard

Cat. No. 91 / Object ID: 5175-010

André Giroux

Santa Trinità dei Monti in the Snow, 1825/30

oil on paper, mounted on canvas

overall: 22 x 30 cm (8 11/16 x 11 13/16 in.)

framed: 34.6 x 42.1 x 3.8 cm (13 5/8 x 16 9/16 x 1 1/2 in.)

National Gallery of Art, Washington, Chester Dale Fund



Cat. No. 92 / Object ID: 5175-011

Christoffer Wilhelm Eckersberg

View of the Cloaca Maxima, Rome, 1814

oil on canvas

overall: 31.8 x 47.4 cm (12 1/2 x 18 11/16 in.)

framed: 46.7 x 62.2 x 5.1 cm (18 3/8 x 24 1/2 x 2 in.)

National Gallery of Art, Washington, Gift of Victoria and Roger Sant

Cat. No. 93 / Object ID: 5175-009

Camille Corot

The Island and Bridge of San Bartolomeo, Rome, 1825/28

oil on paper, mounted on canvas

overall: 27 x 43.2 cm (10 5/8 x 17 in.)

framed: 50.8 x 66.4 x 7.6 cm (20 x 26 1/8 x 3 in.)

National Gallery of Art, Washington, Patrons' Permanent Fund

Cat. No. 94 / Object ID: 5175-077

Raymond Monvoisin

View of the Castel Sant' Angelo in Rome, seen from the Janiculum Hill, c. 1821 - 25

oil on paper, mounted on wood panel

paper: 14.3 x 20.1 cm (5 5/8 x 7 15/16 in.)

overall: 14.4 x 20.5 cm (5 11/16 x 8 1/16 in.)

framed: 23.3 x 28.7 x 4.7 cm (9 3/16 x 11 5/16 x 1 7/8 in.)

Fondation Custodia, Collection Frits Lugt, Paris

Cat. No. 95 / Object ID: 5175-112

François-Marius Granet

Vue vers San Giorgio in Velabro avec l'arc de Janus sur la droite, Rome/ View of the Church of San Giorgio in Velabro and the Arch of Janus, Rome,

oil on paper, mounted on canvas

paper: 40 x 28.7 cm (15 3/4 x 11 5/16 in.)

canvas: 41.3 x 30.2 cm (16 1/4 x 11 7/8 in.)

framed: 50.4 x 39.6 x 4 cm (19 13/16 x 15 9/16 x 1 9/16 in.)

Private Collection, London

Cat. No. 96 / Object ID: 5175-073

Carl Blechen

View of the Colosseum in Rome, 1829

oil on paper, mounted on wood panel

paper: 18.6 x 31.8 cm (7 5/16 x 12 1/2 in.)

overall: 18.8 x 31.9 cm (7 3/8 x 12 9/16 in.)

framed: 28.5 x 41.6 x 3.5 cm (11 1/4 x 16 3/8 x 1 3/8 in.)

Fondation Custodia, Collection Frits Lugt, Paris

Cat. No. 97 / Object ID: 5175-007

Léon Fleury

The Tomb of Caecilia Metella, c. 1830

oil on canvas

overall: 27.9 x 33 cm (11 x 13 in.)

framed: 38.7 x 48.3 x 5.7 cm (15 1/4 x 19 x 2 1/4 in.)

National Gallery of Art, Washington, Gift of Frank Anderson Trapp



Cat. No. 98 / Object ID: 5175-055

Franz Ludwig Catel, attributed to

The Ponte Nomentano, the Sabine Hills in the Distance,

oil on paper

overall: 20.8 x 33.5 cm (8 3/16 x 13 3/16 in.)

framed: 28.5 x 41.5 x 2.8 cm (11 1/4 x 16 5/16 x 1 1/8 in.)

Fondation Custodia, Collection Frits Lugt, Paris

Cat. No. 99 / Object ID: 5175-024

Camille Corot

View of the Convent of Sant'Onofrio on the Janiculum, Rome, 1826

oil on paper, mounted on canvas

overall: 23.2 x 33.3 cm (9 1/8 x 13 1/8 in.)

framed: 32.3 x 40.7 x 6 cm (12 11/16 x 16 x 2 3/8 in.)

The Syndics of the Fitzwilliam Museum, University of Cambridge

Cat. No. 100 / Object ID: 5175-144

Michel Dumas

Fontaine dans la campagne de Rome/ Fountain in the Roman Campagna, c. 1838 - 40

oil on canvas, mounted on wood panel

canvas: 11.2 x 29.6 cm (4 7/16 x 11 5/8 in.)

panel: 12.1 x 30.3 cm (4 3/4 x 11 15/16 in.)

framed: 17.5 x 35.2 x 2.5 cm (6 7/8 x 13 7/8 x 1 in.)

Private Collection, London

Cat. No. 101 / Object ID: 5175-056

Johann Martin von Rohden

View of Hadrian's Villa in Tivoli, the Tiber Valley and the Sabine Hills in the Distance,

oil on paper, mounted on canvas

overall: 38.4 x 53.3 cm (15 1/8 x 21 in.)

framed: 50.8 x 66 x 7.1 cm (20 x 26 x 2 13/16 in.)

Fondation Custodia, Collection Frits Lugt, Paris

Cat. No. 102 / Object ID: 5175-109

Théodore Caruelle d'Aligny

Vue d'Olevano/ View of Olevano, 1827

oil on paper, mounted on canvas

paper: 32.9 x 49.1 cm (12 15/16 x 19 5/16 in.)

overall: 33.3 x 49.7 cm (13 1/8 x 19 9/16 in.)

framed: 44.5 x 61 x 3.7 cm (17 1/2 x 24 x 1 7/16 in.)

Private Collection, London

Cat. No. 103 / Object ID: 5175-059

Achille-Etna Michallon

View of Santa Scolastica in Subiaco, 1818

oil on paper, mounted on canvas

overall: 43.4 x 29.2 cm (17 1/16 x 11 1/2 in.)

framed: 56 x 42.2 x 5.5 cm (22 1/16 x 16 5/8 x 2 3/16 in.)

Fondation Custodia, Collection Frits Lugt, Paris

Cat. No. 104 / Object ID: 5175-005

Jules Coignet

View of Lake Nemi, 1843

oil on paper, mounted on canvas

overall: 27 x 36 cm (10 5/8 x 14 3/16 in.)

framed: 37.2 x 46 x 4.4 cm (14 5/8 x 18 1/8 x 1 3/4 in.)

National Gallery of Art, Washington, Gift of Mrs. John Jay Ide in memory of Mr. and Mrs. William Henry Donner



Cat. No. 105 / Object ID: 5175-122

Jean-Joseph-Xavier Bidauld

Paysage montagneux d'Italie/ Mountainous Landscape, Italy,

oil on paper, mounted on cardboard

paper: 32 x 40.8 cm (12 5/8 x 16 1/16 in.)

cardboard: 32.5 x 41.2 cm (12 13/16 x 16 1/4 in.)

framed: 47.4 x 56 x 6 cm (18 11/16 x 22 1/16 x 2 3/8 in.)

Private Collection, London

Cat. No. 106 / Object ID: 5175-091

Jean-Joseph-Xavier Bidauld

Sunrise in an Italian Landscape, 1785 - 91

oil on paper, mounted on cardboard

overall: 25.5 x 48.9 cm (10 1/16 x 19 1/4 in.)

framed: 32.5 x 55.4 x 4 cm (12 13/16 x 21 13/16 x 1 9/16 in.)

Fondation Custodia, Collection Frits Lugt, Paris. Gift John Schlichte Bergen and Alexandra van Nierop, Amsterdam

Cat. No. 107 / Object ID: 5175-053

Johan Thomas Lundbye

View of the Roman Campagna, 1845

oil on paper, mounted on wood panel

paper: 29 x 46.6 cm (11 7/16 x 18 3/8 in.)

panel: 29.3 x 47 cm (11 9/16 x 18 1/2 in.)

framed: 38.4 x 55.4 x 5.2 cm (15 1/8 x 21 13/16 x 2 1/16 in.)

Fondation Custodia, Collection Frits Lugt, Paris, bequest of Carlos van Hasselt and Andrzej Niewęłowski, Paris

Cat. No. 108 / Object ID: 5175-129

Vilhelm Kyhn

Vue de Capri/ View of Capri, 1851

oil on paper, mounted on canvas

paper: 32.4 x 41 cm (12 3/4 x 16 1/8 in.)

canvas: 33.1 x 42 cm (13 1/16 x 16 9/16 in.)

framed: 43.2 x 52.5 x 4 cm (17 x 20 11/16 x 1 9/16 in.)

Private Collection, London

Cat. No. 109 / Object ID: 5175-142

August Kopisch

View of Capri,

oil on wood panel

overall: 25.9 x 37.5 cm (10 3/16 x 14 3/4 in.)

framed: 32 x 43.4 x 2.5 cm (12 5/8 x 17 1/16 x 1 in.)

Fondation Custodia, Collection Frits Lugt, Paris

Cat. No. 110 / Object ID: 5175-141

August Kopisch

View of the Faraglioni at Capri,

oil on wood panel

overall: 26.1 x 37.5 cm (10 1/4 x 14 3/4 in.)

framed: 32.5 x 43.9 x 2.6 cm (12 13/16 x 17 5/16 x 1 in.)

Fondation Custodia, Collection Frits Lugt, Paris

Cat. No. 111 / Object ID: 5175-103

Anton Sminck Pitloo

A Boy Sitting Under a Pergola, Capri, c. 1820

oil on paper

overall: 32 x 45.1 cm (12 5/8 x 17 3/4 in.)

framed: 37.4 x 50.5 x 1.8 cm (14 3/4 x 19 7/8 x 11/16 in.)

Fondation Custodia, Collection Frits Lugt, Paris

Cat. No. 112 / Object ID: 5175-104

Anton Sminck Pitloo

Study of a Pergola, Capri, c. 1820

oil on paper

overall: 27.5 x 42.7 cm (10 13/16 x 16 13/16 in.)

framed: 33.7 x 48.7 x 2.9 cm (13 1/4 x 19 3/16 x 1 1/8 in.)

Fondation Custodia, Collection Frits Lugt, Paris

Cat. No. 113 / Object ID: 5175-102

Thomas Fearnley

Loggia in Sorrento, 1834

oil on paper, mounted on wood panel

overall: 39.3 x 51.8 cm (15 1/2 x 20 3/8 in.)

framed: 60.5 x 48.2 x 1.8 cm (23 13/16 x 19 x 11/16 in.)

Fondation Custodia, Collection Frits Lugt, Paris

Cat. No. 114 / Object ID: 5175-130

Gustaf Wilhelm Palm

Vue de Capri avec Monte Solaro/ View of Capri with Mount Solaro, 1841

oil on paper, mounted on canvas

paper and cardboard: 42 x 57 cm (16 9/16 x 22 7/16 in.)

framed: 51.6 x 67.8 x 4.5 cm (20 5/16 x 26 11/16 x 1 3/4 in.)

Private Collection, London

Cat. No. 115 / Object ID: 5175-105

Anonymous French

A Terrace on the Isle of Capri, 1800 - 1899

oil on paper, mounted on canvas

paper: 31.9 x 30 cm (12 9/16 x 11 13/16 in.)

canvas: 32.7 x 30.8 cm (12 7/8 x 12 1/8 in.)

framed: 43.8 x 42 x 4.5 cm (17 1/4 x 16 9/16 x 1 3/4 in.)

Fondation Custodia, Collection Frits Lugt, Paris