

## Vermeer and the Masters of Genre Painting: Inspiration and Rivalry

October 22, 2017 - January 21, 2018

**To order publicity images:** Publicity images are available only for those objects accompanied by a thumbnail image below. Please email [pr-images@nga.gov](mailto:pr-images@nga.gov) or fax (202) 789-3044 and designate your desired images, using the "File Name" on this list. Please include your name and contact information, press affiliation, deadline for receiving images, the date of publication, and a brief description of the kind of press coverage planned.

Links to download the digital image files will be sent via e-mail.

**Usage:** Images are provided exclusively to the press, and only for purposes of publicity for the duration of the exhibition at the National Gallery of Art. All published images must be accompanied by the credit line provided and with copyright information, as noted.

**Important:** The images displayed on this page are for reference only and are not to be reproduced in any media.

---

### Pieter de Hooch

#### *The Greeting, c. 1675*

oil on canvas

framed: 43 3/4 x 37 5/8 x 3 3/4 in. (111.13 x 95.57 x 9.53 cm)

unframed: 34 x 27 1/2 in. (86.36 x 69.85 cm)

National Gallery of Art, Washington, Corcoran Collection (William A. Clark Collection)

### Gerrit Dou

#### *A Young Lady Playing a Clavichord, c. 1667*

oil on panel

overall: 39 x 32 cm (15 1/4 x 12 1/2 in.)

Private Collection

### Johannes de Ram

#### *Figurative Map of Delft, 1675-1678*

Print (etching and engraving) on paper

overall (single sheet): 67 x 57 cm (26 3/8 x 22 7/16 in.)

framed (overall): 127 x 111.76 cm (50 x 44 in.)

National Gallery of Art Library

Cat. No. 1.1

### Gerard ter Borch

#### *Officer Writing a Letter, c. 1658-59*

oil on canvas

overall: 56.8 x 43.8 cm (22 3/8 x 17 1/4 in.)

framed: 86 x 74.3 x 7.3 cm (33 7/8 x 29 1/4 x 2 7/8 in.)

Philadelphia Museum of Art, The William L. Elkins Collection, 1924

Cat. No. 1.2  
**Gerard ter Borch**  
***Woman Sealing a Letter, c. 1658-59***  
oil on canvas  
overall: 56.5 x 43.8 cm (22 1/4 x 17 1/4 in.)  
framed: 80 x 67.1 cm (31 1/2 x 26 7/16 in.)  
Private Collection

Cat. No. 1.3 / File Name: 3799-031.jpg  
**Gabriel Metsu**  
***Man Writing a Letter, c. 1664-66***  
oil on panel  
unframed: 52 x 40.5 cm (20 1/2 x 15 15/16 in.)  
framed: 71.2 x 59.2 x 5.5 cm (28 1/16 x 23 5/16 x 2 3/16 in.)  
National Gallery of Ireland, Dublin, Sir Alfred and Lady Beit, 1987 (Beit Collection)  
Photo © National Gallery of Ireland



Cat. No. 1.4 / File Name: 3799-032.jpg  
**Gabriel Metsu**  
***Woman Reading a Letter, c. 1664-66***  
oil on panel  
unframed: 52.5 x 40.2 cm (20 11/16 x 15 13/16 in.)  
framed: 71.1 x 59.5 x 5.5 cm (28 x 23 7/16 x 2 3/16 in.)  
National Gallery of Ireland, Dublin, Sir Alfred and Lady Beit, 1987 (Beit Collection)  
Photo © National Gallery of Ireland



Cat. No. 1.5  
**Frans van Mieris**  
***Woman Sealing a Letter by Candlelight, 1667***  
oil on panel  
overall: 27 x 20 cm (10 5/8 x 7 7/8 in.)  
Private Collection

Cat. No. 1.6 / File Name: 3799-036.jpg  
**Johannes Vermeer**  
***Woman Writing a Letter, with her Maid, c. 1670-71***  
oil on canvas  
unframed: 72.2 x 59.7 cm (28 7/16 x 23 1/2 in.)  
National Gallery of Ireland, Dublin, Sir Alfred and Lady Beit, 1987 (Beit Collection)  
Photo © National Gallery of Ireland



Cat. No. 2.1 / File Name: 3799-021.jpg  
**Gerard ter Borch**  
***Woman Writing a Letter, c. 1655-56***  
oil on panel  
overall: 39 x 29.5 cm (15 3/8 x 11 5/8 in.)  
Royal Picture Gallery Mauritshuis, The Hague



Cat. No. 2.2  
**Gabriel Metsu**  
***Woman Writing a Letter, c. 1662-64***  
oil on panel  
overall: 39.37 × 33.5 cm (15 1/2 × 13 3/16 in.)  
framed: 61.6 × 57 × 10.49 cm (24 1/4 × 22 7/16 × 4 1/8 in.)  
The Leiden Collection, New York  
© The Leiden Collection, New York

Cat. No. 2.3 / File Name: 3799-005.jpg  
**Johannes Vermeer**  
***Lady Writing, c. 1665***  
oil on canvas  
overall: 45 × 39.9 cm (17 11/16 × 15 11/16 in.)  
framed: 68.3 × 62.2 × 7 cm (26 7/8 × 24 1/2 × 2 3/4 in.)  
National Gallery of Art, Washington, Gift of Harry Waldron Havemeyer and Horace Havemeyer, Jr., in memory of their father, Horace Havemeyer



Cat. No. 2.4  
**Frans van Mieris**  
***Woman Writing a Letter by Candlelight, 1670***  
oil on panel  
overall: 16 × 12 cm (6 5/16 × 4 3/4 in.)  
Private Collection, courtesy David Koester Gallery, Zurich

Cat. No. 3.1  
**Gerard ter Borch**  
***Two Women Making Music, with a Page, c. 1657***  
oil on panel  
unframed: 47 × 44 cm (18 1/2 × 17 5/16 in.)  
Musée du Louvre, Département des Peintures, Paris  
Photo © RMN-Grand Palais (Musée du Louvre)/Franck Raux

Cat. No. 3.2  
**Frans van Mieris**  
***The Duet, 1658***  
oil on panel  
unframed: 31.5 × 24.6 cm (12 3/8 × 9 11/16 in.)  
framed: 55.5 × 49.2 cm (21 7/8 × 19 3/8 in.)  
Staatliches Museum Schwerin/ Ludwigslust/ Güstrow  
bpk | Staatliches Museum Schwerin | Elke Walford

Cat. No. 3.3 / File Name: 3799-043.jpg  
**Jan Steen**  
***Young Woman Playing a Harpsichord to a Young Man, c. 1659***  
oil on panel  
unframed: 42.3 × 33 cm (16 5/8 × 13 in.)  
framed: 60.5 × 51.5 cm (23 13/16 × 20 1/4 in.)  
The National Gallery, London. Bought, 1871.  
© The National Gallery, London



Cat. No. 3.4

**Gabriel Metsu**

***Man and a Woman at the Virginal, c. 1659-62***

oil on panel

unframed: 31.4 × 25 cm (12 3/8 × 9 13/16 in.)

Musée du Louvre, Département des Peintures, Paris

Photo © RMN- Grand Palais (Musée du Louvre)/Franck Raux

Cat. No. 3.5

**Caspar Netscher**

***Song with Harpsichord Accompaniment, 1666***

oil on panel

unframed: 59.5 × 46 cm (23 7/16 × 18 1/8 in.)

Gemäldegalerie Alte Meister, Staatliche Kunstsammlungen, Dresden

bpk | Staatliche Kunstsammlungen Dresden | Elke Estel | Hans-Peter Klut

Cat. No. 4.1 / File Name: 3799-017.jpg

**Gerrit Dou**

***Woman at the Clavichord, c. 1665***

oil on panel

Overall: 37.7 × 29.8 cm (14 13/16 × 11 3/4 in.)

framed: 52 × 44.5 × 4 cm (20 1/2 × 17 1/2 × 1 9/16 in.)

By Permission of The Trustees of Dulwich Picture Gallery, London



Cat. No. 4.2 / File Name: 3799-011.jpg

**Johannes Vermeer**

***Young Woman Seated at a Virginal, c. 1675***

oil on canvas

overall: 51.5 × 45.5 cm (20 1/4 × 17 15/16 in.)

framed: 73 × 67.5 × 8.5 cm (28 3/4 × 26 9/16 × 3 3/8 in.)

The National Gallery, London. Salting Bequest, 1910

© The National Gallery, London



Cat. No. 5.1

**Frans van Mieris**

***Woman Playing a Theorbo-Lute, 1663***

oil on panel

unframed: 22 × 17 cm (8 11/16 × 6 11/16 in.)

framed: 33.7 × 29.2 × 6 cm (13 1/4 × 11 1/2 × 2 3/8 in.)

Scottish National Gallery, Edinburgh

Photo © National Galleries of Scotland, Edinburgh

Cat. No. 5.2

**Johannes Vermeer**

***A Woman with a Lute, c. 1663-64***

oil on canvas

unframed: 51.4 × 45.7 cm (20 1/4 × 18 in.)

Lent by The Metropolitan Museum of Art, Bequest of Collis P. Huntington, 1900 (25.110.24)

© 2017 The Metropolitan Museum of Art/Art Resource/Scala, Florence

Cat. No. 5.3  
**Eglon van der Neer**  
***Woman Tuning a Lute, 1678***

oil on panel  
unframed: 42.5 × 36.7 cm (16 3/4 × 14 7/16 in.)  
Bayerische Staatsgemäldesammlungen, Alte Pinakothek, Munich  
bpk | Bayerische Staatsgemäldesammlungen

Cat. No. 6.1 / File Name: 3799-020.jpg  
**Gerard ter Borch**  
***Young Woman at Her Toilet with a Maid, c. 1650-51***

oil on wood  
Overall: 47.6 x 34.6 cm (18 3/4 x 13 5/8 in.)  
Lent by The Metropolitan Museum of Art, Gift of J. Pierpont Morgan, 1917 (17.190.10)  
© 2017 The Metropolitan Museum of Art/Art Resource/Scala, Florence



Cat. No. 6.2  
**Jan Steen**  
***Young Woman with a Letter ("Bathsheba with King David's Letter"), c. 1659-60***

oil on panel  
overall: 41.5 x 33 cm (16 5/16 x 13 in.)  
Private Collection

Cat. No. 6.3  
**Frans van Mieris**  
***Woman Before a Mirror, c. 1662***

oil on panel  
overall: 30 x 23 cm (11 13/16 x 9 1/16 in.)  
Staatliche Museen zu Berlin, Gemäldegalerie  
bpk/Gemäldegalerie, SMB/Jörg P. Anders

Cat. No. 6.4 / File Name: 3799-008.jpg  
**Johannes Vermeer**  
***Woman with a Pearl Necklace, c. 1662-65***

oil on canvas  
Overall (painted surface): 51.2 x 45.1 cm (20 3/16 x 17 3/4 in.)  
overall (unframed): 55 x 45 cm (21 5/8 x 17 11/16 in.)  
overall (framed): 76 x 69 cm (29 15/16 x 27 3/16 in.)  
Staatliche Museen zu Berlin, Gemäldegalerie  
bpk/Gemäldegalerie, SMB/Jörg P. Anders



Cat. No. 6.5  
**Caspar Netscher**  
***Woman at Her Toilet, c. 1665***

oil on panel  
unframed: 42.5 × 33 cm (16 3/4 × 13 in.)  
framed: 59 × 49.5 cm (23 1/4 × 19 1/2 in.)  
Private Collection, London, courtesy of Johnny Van Haefte Ltd.

Cat. No. 7.1

**Gerard ter Borch**

***Woman at a Mirror, c. 1650-52***

oil on panel

overall: 34.5 × 26 cm (13 9/16 × 10 1/4 in.)

Rijksmuseum, Amsterdam, De Bruijn-van der Leeuw Bequest, Muri, Switzerland

Cat. No. 7.2 / File Name: 3799-024.jpg

**Gerard ter Borch**

***Lady at Her Toilet, c. 1660***

oil on canvas

overall: 76.2 × 59.7 cm (30 × 23 1/2 in.)

framed: 111.3 × 95.6 × 8.3 cm (43 13/16 × 37 5/8 × 3 1/4 in.)

The Detroit Institute of Arts, Founders Society Purchase, Eleanor Clay Ford Fund, General Membership Fund, Endowment Income Fund and Special Activities Fund

Bridgeman Images



Cat. No. 7.3

**Gerrit Dou**

***Lady at Her Toilet, 1667***

oil on panel

overall: 75.5 × 58 cm (29 3/4 × 22 13/16 in.)

framed: 96 × 80 × 9 cm (37 13/16 × 31 1/2 × 3 9/16 in.)

Museum Boijmans Van Beuningen, Rotterdam

Photographer: Studio Tromp, Rotterdam

Cat. No. 8.1

**Gerard ter Borch**

***Woman Washing her Hands, c. 1655-56***

oil on panel

unframed: 53 × 43 cm (20 7/8 × 16 15/16 in.)

Gemäldegalerie Alte Meister, Staatliche Kunstsammlungen, Dresden

bpk | Staatliche Kunstsammlungen Dresden | Elke Estel

Cat. No. 8.2

**Gerard ter Borch**

***The Suitor's Visit, c. 1658***

oil on canvas

overall: 80 × 75 cm (31 1/2 × 29 1/2 in.)

framed: 110.8 × 106 × 12.7 cm (43 5/8 × 41 3/4 × 5 in.)

National Gallery of Art, Washington, Andrew W. Mellon Collection

Cat. No. 8.3

**Gabriel Metsu**

***The Intruder, c. 1660***

oil on panel

overall: 66.6 × 59.4 cm (26 1/4 × 23 3/8 in.)

framed: 93.4 × 85.1 × 12.1 cm (36 3/4 × 33 1/2 × 4 3/4 in.)

National Gallery of Art, Washington, Andrew W. Mellon Collection

:

Cat. No. 8.4 / File Name: 3799-033.jpg

**Gabriel Metsu**

***Man Visiting a Woman Washing her Hands, c. 1663-66***

oil on canvas

unframed: 83.7 × 67.4 cm (32 15/16 × 26 9/16 in.)

framed: 112 × 96 × 10 cm (44 1/8 × 37 13/16 × 3 15/16 in.)

Waddesdon Manor, The Rothschild Collection (Rothschild Family Trust)

Mike Fear © The National Trust, Waddesdon Manor



Cat. No. 8.5 / File Name: 3799-054.jpg

**Eglon van der Neer**

***Woman Washing her Hands, 1675***

oil on panel

unframed: 49 × 39.5 cm (19 5/16 × 15 9/16 in.)

Royal Picture Gallery Mauritshuis, The Hague

Photography by Margareta Svensson



Cat. No. 10.1

**Gerard ter Borch**

***Young Woman with a Soldier and an Onlooker, c. 1650***

oil on panel

unframed: 34.5 × 27.5 cm (13 9/16 × 10 13/16 in.)

framed: 55 cm x 48.5 cm x 10 cm

Musée Fabre, Montpellier Méditerranée Métropole

© Musée Fabre de Montpellier Méditerranée Métropole - photograph by Frédéric Jaulmes

Cat. No. 10.2

**Frans van Mieris**

***Brothel Scene, c. 1658-59***

oil on panel

Overall: 42.8 x 33.3 cm (16 7/8 x 13 1/8 in.)

overall: 59.5 x 50 cm (23 7/16 x 19 11/16 in.)

Royal Picture Gallery Mauritshuis, The Hague

Photography by Margareta Svensson

Cat. No. 10.3

**Jacob van Ochtervelt**

***Merry Company, c. 1663***

oil on canvas

unframed: 51.7 × 41.2 cm (20 3/8 × 16 1/4 in.)

Manchester Art Gallery

© Manchester Art Gallery

Cat. No. 11.1

**Frans van Mieris**

***The Doctor's Visit, 1657***

oil on copper

unframed: 34 × 27 cm (13 3/8 × 10 5/8 in.)

framed: 50 x 42.5 x 4.5 cm (19 11/16 x 16 3/4 x 1 3/4 in.)

Kunsthistorisches Museum, Vienna, Gemäldegalerie

KHM-Museumsverband

:  
Cat. No. 11.2  
**Jan Steen**  
***The Doctor's Visit, 1661-62***  
oil on panel  
Overall: 47.5 x 41 cm (18 11/16 x 16 1/8 in.)  
overall: 69.8 x 63.5 x 8.9 cm (27 1/2 x 25 x 3 1/2 in.)  
The Wellington Collection, Apsley House (English Heritage)  
© Historic England Archive

Cat. No. 11.3  
**Gerrit Dou**  
***The Dropsical Woman, 1663***  
oil on panel  
overall: 86 x 67.8 cm (33 7/8 x 26 11/16 in.)  
framed: 97.8 x 80.7 x 6.4 cm (38 1/2 x 31 3/4 x 2 1/2 in.)  
Musée du Louvre, Département des Peintures, Paris  
Photo © RMN- Grand Palais (Musée du Louvre)/Adrien Didierjean

Cat. No. 12.1  
**Gerard ter Borch**  
***The Sleeping Soldier, c. 1657***  
oil on canvas  
unframed: 65.41 x 54.93 x 2.54 cm (25 3/4 x 21 5/8 x 1 in.)  
framed: 94.62 x 82.87 x 12.7 cm (37 1/4 x 32 5/8 x 5 in.)  
overall: 63.5 x 55 cm (25 x 21 5/8 in.)  
The Taft Museum of Art, Cincinnati, Ohio

Cat. No. 12.2  
**Gerrit Dou**  
***Woman Asleep, c. 1660-1665***  
oil on panel  
Hohenbuchau Collection, on permanent loan to Liechtenstein. The Princely Collections, Vienna.  
© 2017 LIECHTENSTEIN, The Princely Collections, Vaduz-Vienna/ SCALA, Florence

Cat. No. 12.3  
**Jacob van Ochtervelt**  
***The Sleeping Cavalier, 1660-1663***  
oil on panel  
unframed: 46 x 37.7 cm (18 1/8 x 14 13/16 in.)  
framed: 66 x 57.5 cm (26 x 22 5/8 in.)  
Manchester Art Gallery  
© Manchester Art Gallery

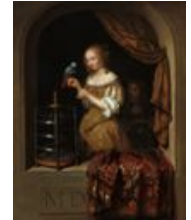
Cat. No. 13.1  
**Gerrit Dou**  
***Woman with a Parrot, c. 1660-65***  
oil on panel  
unframed (arched top): 24.77 x 18.41 cm (9 3/4 x 7 1/4 in.)  
framed: 41.28 x 35.23 x 4.45 cm (16 1/4 x 13 7/8 x 1 3/4 in.)  
The Leiden Collection, New York  
© The Leiden Collection, New York



Cat. No. 13.2 / File Name: 3799-035.jpg  
**Frans van Mieris**  
***Woman Feeding a Parrot, 1663***  
oil on panel  
unframed: 22.38 × 17.78 cm (8 13/16 × 7 in.)  
framed: 40.01 × 35.2 × 5 cm (15 3/4 × 13 7/8 × 2 in.)  
The Leiden Collection, New York  
© The Leiden Collection, New York



Cat. No. 13.3 / File Name: 3799-058.jpg  
**Caspar Netscher**  
***Woman Feeding a Parrot, with a Page, 1666***  
oil on panel  
overall: 45.7 × 36.2 cm (18 × 14 1/4 in.)  
National Gallery of Art, Washington, The Lee and Juliet Folger Fund



Cat. No. 14.1 / File Name: 3799-056.jpg  
**Pieter de Hooch**  
***Woman Weighing Coins, c. 1664***  
oil on canvas  
unframed: 61 × 53 cm (24 × 20 7/8 in.)  
Staatliche Museen zu Berlin, Gemäldegalerie, Property of Kaiser Friedrich Museumsverein  
bpk/Gemäldegalerie, SMB, Eigentum des Kaiser Friedrich Museumsvereins/Jörg P. Anders



Cat. No. 14.2 / File Name: 3799-004.jpg  
**Johannes Vermeer**  
***Woman Holding a Balance, c. 1664***  
oil on canvas  
painted surface: 39.7 × 35.5 cm (15 5/8 × 14 in.)  
stretcher size: 42.5 × 38 cm (16 3/4 × 14 15/16 in.)  
framed: 62.9 × 58.4 × 7.6 cm (24 3/4 × 23 × 3 in.)  
National Gallery of Art, Washington, Widener Collection



Cat. No. 15.2  
**Nicolaes Maes**  
***Young Woman Making Lace, 1655***  
Oil on oak panel  
unframed: 57.15 × 43.82 cm (22 1/2 × 17 1/4 in.)  
framed: 78.1 × 64.7 × 7.4 cm (30 3/4 × 25 1/2 × 2 15/16 in.)  
National Gallery of Canada, Ottawa. Purchased 1954.  
Photo © National Gallery of Canada

:

Cat. No. 15.4 / File Name: 3799-007.jpg

**Johannes Vermeer**

***The Lacemaker, c. 1670-71***

oil on canvas transferred to panel

Overall (painted surface): 23.9 x 20.5 cm (9 7/16 x 8 1/16 in.)

overall (unframed): 24.5 x 21 cm (9 5/8 x 8 1/4 in.)

overall (framed): 71 x 63 cm (27 15/16 x 24 13/16 in.)

Musée du Louvre, Département des Peintures, Paris

Photo © RMN-Grand Palais (Musée du Louvre)/Gérard Blot



Cat. No. 16.1

**Nicolaes Maes**

***Woman Scraping Parsnips, with a Child, 1655***

oil on panel

unframed: 35.6 x 29.8 cm (14 x 11 3/4 in.)

framed: 49.3 x 43.6 x 7.5 cm (19 7/16 x 17 3/16 x 2 15/16 in.)

The National Gallery, London. Bequeathed by Lord Farnborough, 1838

© The National Gallery, London

Cat. No. 16.2

**Pieter de Hooch**

***Woman Nursing an Infant, with a Child and a Dog, c. 1658-60***

oil on canvas

unframed: 67.9 x 55.6 cm (26 3/4 x 21 7/8 in.)

Fine Arts Museums of San Francisco, Gift of the Samuel H. Kress Foundation, 1961

Cat. No. 16.3

**Gerard ter Borch**

***Woman Peeling Apples, c. 1660-61***

oil on canvas, mounted on panel

unframed: 36.3 x 30.7 cm (14 5/16 x 12 1/16 in.)

framed: 49.2 x 44 x 6.5 cm (19 3/8 x 17 5/16 x 2 9/16 in.)

Kunsthistorisches Museum, Vienna, Gemäldegalerie

KHM-Museumsverband

Cat. No. 18.2 / File Name: 3799-019.jpg

**Gerrit Dou**

***Astronomer by Candlelight, c. 1665***

oil on panel

Overall (Panel with rounded top): 32 x 21.2 cm (12 5/8 x 8 3/8 in.)

framed: 52.1 x 40 cm (20 1/2 x 15 3/4 in.)

The J. Paul Getty Museum, Los Angeles



Cat. No. 18.3 / File Name: 3799-006.jpg

**Johannes Vermeer**

***The Astronomer, 1668***

oil on canvas

overall: 51.5 x 45.5 cm (20 1/4 x 17 15/16 in.)

framed: 72.5 x 66.5 x 9 cm (28 9/16 x 26 3/16 x 3 9/16 in.)

Musée du Louvre, Département des Peintures, Paris

Photo © RMN-Grand Palais (Musée du Louvre)/Franck Raux



:

Cat. No. 18.4

**Johannes Vermeer**

***The Geographer, 1669***

oil on canvas

overall (painted surface): 52 x 45.5 cm (20 1/2 x 17 15/16 in.)

framed: 66 x 59.2 x 5 cm (26 x 23 5/16 x 1 15/16 in.)

overall (unframed): 53 x 46.6 cm (20 7/8 x 18 3/8 in.)

Städelsches Kunstinstitut, Frankfurt am Main

© Städel Museum - ARTOTHEK

Cat. No. 19.1

**Gerard ter Borch**

***Gallant Conversation ("The Paternal Admonition"), c. 1654***

oil on canvas

overall: 71 x 73 cm (27 15/16 x 28 3/4 in.)

Rijksmuseum, Amsterdam

Cat. No. 19.2

**Pieter de Hooch**

***Woman Drinking with Two Men, c. 1658***

oil on canvas

unframed: 73.7 x 64.6 cm (29 x 25 7/16 in.)

framed: 92 x 81 x 10 cm (36 1/4 x 31 7/8 x 3 15/16 in.)

The National Gallery, London. Bought, 1871.

© The National Gallery, London

Cat. No. 19.3

**Jan Steen**

***Itinerant Musicians, 1659***

oil on panel

unframed: 47 x 33 cm (18 1/2 x 13 in.)

National Trust, Ascott. The Rothschild Collection. Accepted in lieu of inheritance tax by HM

Government and allocated to the National Trust, 2000.

© National Trust Images/John Hammond

Cat. No. 19.4

**Jacob van Ochtervelt**

***The Serenade, c. 1669***

oil on canvas

unframed: 51.5 x 40.5 cm (20 1/4 x 15 15/16 in.)

framed: 65 x 55 cm (25 9/16 x 21 5/8 in.)

Kunsthalle Bremen - Der Kunstverein in Bremen Gift Carl Schünemann 2017

Cat. No. 21.1

**Samuel van Hoogstraten / Cornelis Bisschop**

***View of an Interior ("Les Pantoufles"), c. 1654-1662***

oil on canvas

unframed: 103 x 71 cm (40 9/16 x 27 15/16 in.)

Musée du Louvre, Département des Peintures, Paris

Photo © RMN-Grand Palais (Musée du Louvre)/Tony Querrec

:

Cat. No. 21.3 / File Name: 3799-013.jpg

**Johannes Vermeer**

***The Love Letter, c. 1669-70***

oil on canvas

Overall (painted surface): 44 x 38 cm (17 5/16 x 14 15/16 in.)

overall (unframed): 44 x 38.5 cm (17 5/16 x 15 3/16 in.)

Rijksmuseum, purchased with the support of Vereniging Rembrandt



Cat. No. 21.4

**Pieter de Hooch**

***Couple with a Parrot, c. 1675-78***

oil on canvas

unframed: 73 x 62 cm (28 3/4 x 24 7/16 in.)

Wallraf-Richartz-Museum & Fondation, Corboud, Cologne

Photo © Rheinisches Bildarchiv Köln

Cat. No. 22.1

**Hendrick Martensz Sorgh**

***The Lute Player, 1661***

oil on panel

unframed: 51.5 x 38.5 cm (20 1/4 x 15 3/16 in.)

Rijksmuseum, Amsterdam, Dupper Wzn. Bequest, Dordrecht

Cat. No. 22.2

**Quiringh van Brekelenkam**

***Gallant Conversation, c. 1663***

oil on panel

unframed: 41.3 x 35.2 cm (16 1/4 x 13 7/8 in.)

Lent by The Metropolitan Museum of Art, The Friedsam Collection, Bequest of Michael Friedsam, 1931 (32.100.19)

Cat. No. 22.3

**Cornelis Bega**

***The Duet, 1663***

oil on panel

unframed: 44.4 x 39.4 cm (17 1/2 x 15 1/2 in.)

framed: 66 x 61.3 x 8 cm (26 x 24 1/8 x 3 1/8 in.)

Musée du Petit Palais, Musée des Beaux-Arts de la Ville de Paris

© Petit Palais/Roger-Viollet