

## Drawings for Paintings in the Age of Rembrandt

October 4, 2016 - January 2, 2017

**To order publicity images:** Publicity images are available only for those objects accompanied by a thumbnail image below. Please email [pr-images@nga.gov](mailto:pr-images@nga.gov) or fax (202) 789-3044 and designate your desired images, using the "File Name" on this list. Please include your name and contact information, press affiliation, deadline for receiving images, the date of publication, and a brief description of the kind of press coverage planned.

Links to download the digital image files will be sent via e-mail.

**Usage:** Images are provided exclusively to the press, and only for purposes of publicity for the duration of the exhibition at the National Gallery of Art. All published images must be accompanied by the credit line provided and with copyright information, as noted.

**Important:** The images displayed on this page are for reference only and are not to be reproduced in any media.

---

Cat. No. 1

**Joris van der Haagen**

***View in the Vicinity of Doorwerth, 1650***

black chalk and gray wash, pen and brown ink, on paper

19.5 × 25.9 cm (7 11/16 × 10 3/16 in.)

Rijksmuseum, Amsterdam, purchased with the support of the Vereniging Rembrandt

Cat. No. 2 / File Name: 3891-144.jpg

**Jan Lievens**

***Forest Interior with a Draftsman, 1660s***

pen and brown ink and brown wash on paper

24 x 36.2 cm (9 7/16 x 14 1/4 in.)

Maida and George Abrams, Collection, Boston, Massachusetts

Katya Kallsen (c) President and Fellows of Harvard College



Cat. No. 3

**Jan van Kessel**

***Sketchbook, 1659-1660***

black chalk and gray or brown wash on paper

closed: 9.9 × 16 cm (3 7/8 × 6 5/16 in.)

Fondation Custodia, Collection Frits Lugt, Paris

Cat. No. 4

**Nicolaes Pietersz Berchem**

***Four Sheep and a Cow, c. 1652***

red chalk on laid paper with counterproof

overall: 13 x 19.5 cm (5 1/8 x 7 11/16 in.)

National Gallery of Art, Ailsa Mellon Bruce Fund

:

Cat. No. 5a

**Crispijn de Passe II**

***A Drawing School in the Evening (or 'Roman Academy or Drawing School') in Van 't Light der Teken en Schilder Konst, fols. 10-11, Amsterdam, 1643***

engraving, fols. 10-11

33 × 39.8 cm (13 × 15 11/16 in.)

National Gallery of Art Library, David K.E. Bruce Fund

Cat. No. 6

**Leendert van der Cooghen**

***Study of a Nude Man, Seated Three-Quarters Length on a Cushion,***

black chalk on paper

39.1 × 26 cm (15 3/8 × 10 1/4 in.)

Fondation Custodia, Collection Frits Lugt, Paris

Cat. No. 7

**Cornelis Jonson van Ceulen**

***Study of Woman's Hands, c. 1652***

black chalk, heightened with white on blue paper

23 × 38.8 cm (9 1/16 × 15 1/4 in.)

Musée de Grenoble

Cat. No. 8

**Caspar Netscher**

***Studies of Two Female Arms, 1675***

black and white chalk, some brush in black on blue paper

sheet: 24.2 × 22.4 cm (9 1/2 × 8 13/16 in.)

Rijksmuseum, Amsterdam

Cat. No. 9 / File Name: 3891-143.jpg

**Attributed to Gonzales Coques**

***Portrait of a Man Receiving a Letter from a Boy, c. 1660***

oil on panel

55.9 × 44.2 cm (22 × 17 3/8 in.)

The Orsay Collection, London, Paris



Cat. No. 10

**Pieter Molijn**

***Landscape with Open Gate, c. 1630/1635***

oil on panel

33.6 × 47.9 cm (13 1/4 × 18 7/8 in.)

National Gallery of Art, Washington, Ailsa Mellon Bruce Fund and Gift of Arthur K. and Susan H.

Wheelock, 1986.10.1

:

Cat. No. 11

**Jan van der Heyden**

***View Down a Dutch Canal, c. 1670***

oil on panel

32.5 × 39 cm (12 13/16 × 15 3/8 in.)

National Gallery of Art, Washington, Gift of George M. and Linda H. Kaufman, 2012.73.2

Cat. No. 12

**Ambrosius Bosschaert**

***Bouquet of Flowers in a Glass Vase, 1621***

oil on copper

31.6 × 21.6 cm (12 7/16 × 8 1/2 in.)

National Gallery of Art, Washington, Patrons' Permanent Fund and New Century Fund

Cat. No. 13 / File Name: 3891-077.jpg

**Michiel van Musscher**

***An Artist in His Studio with His Drawings, mid-1660s***

oil on panel

47 × 36 cm (18 1/2 × 14 3/16 in.)

Liechtenstein. The Princely Collections, Vaduz-Vienna



Cat. No. 14

**Jacques de Gheyn II**

***Three Flowers: A Double Carnation, a Tulip and a Liverwort or Liverleaf, 1601***

watercolor and tempera on vellum, probably over a sketch in metalpoint (silverpoint?)

22.8 × 17.6 cm (9 × 6 15/16 in.)

Fondation Custodia, Collection Frits Lugt, Paris

Cat. No. 15

**Jacques de Gheyn II**

***Democritus and Heraclitus, 1602/1603***

black and white chalk on light brown paper

23.7 × 28 cm (9 5/16 × 11 in.)

P. & N. De Boer Foundation

Cat. No. 16

**Abraham Bloemaert**

***Landscape with Dilapidated Buildings and Figures, 1629***

oil on canvas

91.5 × 135.5 cm (36 × 53 3/8 in.)

Hamburger Kunsthalle, Hamburg

Cat. No. 17

**Abraham Bloemaert**

***Ruins of a Farmhouse, c. 1571- c.1629***

black chalk, brushed in red and light green, on paper

15.2 × 20.8 cm (6 × 8 3/16 in.)

Rijksmuseum, Amsterdam, purchased with the support of the Vereniging Rembrandt

:

Cat. No. 18

**Abraham Bloemaert**

***Two Seated Boys with Studies for Hands and Feet, c. 1620-1629***

pen and brown ink, red chalk, heightened with white gouache on beige paper  
14 × 18 cm (5 1/2 × 7 1/16 in.)

Musée du Louvre, Paris (on long-term loan to Musée Bonnat-Helleu, Bayonne)

Cat. No. 19

**Abraham Bloemaert**

***Study of Trees (Studies of Two Pollard Willows), late 16th - mid 17th century***

pen and brown ink, watercolor, traces of black chalk, on paper  
21 × 31 cm (8 1/4 × 12 3/16 in.)

Lent by The Metropolitan Museum of Art, Rogers Fund, 1970

Cat. No. 20 / File Name: 3891-038.jpg

**Abraham Bloemaert**

***Studies of Arms, Legs, and Heads,***

red and white chalk, some pen in brown ink on paper  
25.7 × 16.7 cm (10 1/8 × 6 9/16 in.)

Rijksmuseum, Amsterdam



Cat. No. 21

**Abraham Bloemaert**

***Head of an Old Man Turned and Looking to Right, 1625-1635***

black chalk, with gray wash, white body color, heightened with white (partly oxidized), on gray prepared paper

41.5 × 29.7 cm (16 5/16 × 11 11/16 in.)

The British Museum, London

Cat. No. 22

**Abraham Bloemaert**

***Head of an Old Man, 1630-1640***

oil on panel

48.3 × 36.3 cm (19 × 14 5/16 in.)

National Gallery of Art, Washington, Joseph F. McCrindle Collection, 2010.93.41

Cat. No. 23

**Jan Anthonisz Ravesteyn**

***The Hague Magistrate Receiving the Officers of the St. Sebastiaansdoelen, 1618***

pen and gray wash, heightened with white, on paper  
24.8 × 51.7 cm (9 3/4 × 20 3/8 in.)

Fondation Custodia, Collection Frits Lugt, Paris

:

Cat. No. 24

**Pieter Lastman**

***Reclining Woman, as Rachel, 1622***

red and some black chalk, heightened with white, on orange prepared paper

22.9 × 20.2 cm (9 × 7 15/16 in.)

The Ashmolean Museum, Oxford

Cat. No. 26

**Pieter Lastman**

***David Gives Uriah a Letter for Joab, 1619***

oil on panel

42.8 × 63.3 cm (16 7/8 × 24 15/16 in.)

The Leiden Collection, New York, PL-100

Cat. No. 27

**Hendrick Avercamp**

***A Standing Girl with Her Hands under Her Apron, c. 1620***

black and red chalk on paper

26 × 13.2 cm (10 1/4 × 5 3/16 in.)

framed: 41 × 58.1 × 2.9 cm (16 1/8 × 22 7/8 × 1 1/8 in.)

Wall labels: Lent by Her Majesty Queen Elizabeth II

Catalogue: The Royal Collection/ HM Queen Elizabeth II

Photographic credits in catalogue, website, posters etc: Royal Collection Trust / © Her Majesty Queen Elizabeth II 2016

Cat. No. 28

**Hendrick Avercamp**

***An Elegantly Dressed Youth Skating, c. 1620***

pen and brown ink over graphite, shaded with graphite on paper

17.1 × 11.5 cm (6 3/4 × 4 1/2 in.)

Wall labels: Lent by Her Majesty Queen Elizabeth II

Catalogue: The Royal Collection/ HM Queen Elizabeth II

Photographic credits in catalogue, website, posters etc: Royal Collection Trust / © Her Majesty Queen Elizabeth II 2016

Cat. No. 29

**Hendrick Avercamp**

***A Scene on the Ice, c. 1625***

oil on panel

39.2 × 77 cm (15 7/16 × 30 5/16 in.)

framed: 64.8 × 102.2 × 5.7 cm (25 1/2 × 40 1/4 × 2 1/4 in.)

National Gallery of Art, Washington, Ailsa Mellon Bruce Fund

Cat. No. 30

**Hendrick Avercamp**

***A View of Kampen from outside the walls, c. 1620***

pen and brown ink with watercolor over graphite on paper

12.2 x 31 cm (4 13/16 x 12 3/16 in.)

framed: 41 x 58.1 x 2.9 cm (16 1/8 x 22 7/8 x 1 1/8 in.)

Wall labels: Lent by Her Majesty Queen Elizabeth II

Catalogue: The Royal Collection/ HM Queen Elizabeth II

Photographic credits in catalogue, website, posters etc: Royal Collection Trust / © Her Majesty Queen Elizabeth II 2016

Cat. No. 31 / File Name: 3891-018.jpg

**Hendrick Avercamp**

***Winter Scene outside the Walls of Kampen, c. 1613-1615***

oil on panel

44.5 x 72.5 cm (17 1/2 x 28 9/16 in.)

framed: 63.5 x 91.4 x 4.3 cm (25 x 36 x 1 11/16 in.)

Private Collection, The Netherlands



Cat. No. 32

**Esaïas van de Velde I**

***Standing Couple Seen from the Side, c. 1617***

black chalk with gouache highlights on blue paper

23.5 x 16.5 cm (9 1/4 x 6 1/2 in.)

Rijksmuseum, Amsterdam

Cat. No. 33

**Gerrit van Honthorst**

***Merry Company, 1621/1622***

pen and black-brown ink, white chalk highlights, over a preliminary sketch in black chalk on paper

18.3 x 27.1 cm (7 3/16 x 10 11/16 in.)

Albertina, Vienna

Cat. No. 34

**Dirck Hals**

***Sitting Pipe Smoker, 1622-1627***

brush and brown ink with oil containing paint, heightened with white, over a sketch with black chalk on paper

27.7 x 17.8 cm (10 7/8 x 7 in.)

Rijksmuseum, Amsterdam

Cat. No. 35

**Dirck Hals**

***Seated Man, Leaning Backwards,***

brush in brown and gray oil containing paint on paper

22.6 x 19.4 cm (8 7/8 x 7 5/8 in.)

Fondation Custodia, Collection Frits Lugt, Paris

:

Cat. No. 36

**Claes Cornelisz Moyaert**

***Cloelia's Escape from Porsena's Camp, 1640***

black and white chalk, on brownish cartridge paper

23.1 × 38.4 cm (9 1/8 × 15 1/8 in.)

Fondation Custodia, Collection Frits Lugt, Paris

Cat. No. 37

**Pieter van Laer**

***Two Studies of a Seated Shepherd, ca. 1630-1637(?)***

black and white chalk on blue paper

18.6 × 26.2 cm (7 5/16 × 10 5/16 in.)

framed: 46 × 59 cm (18 1/8 × 23 1/4 in.)

Musée des Beaux-Arts et Archéologie, Besançon

Cat. No. 38

**Balthasar van der Ast**

***Study of a Tulip (Admirael Pottebacker) and a Fly, 1620-1630***

gouache, watercolor, and tempera on paper

overall size: 31.3 × 20.2 cm (12 5/16 × 7 15/16 in.)

framed: 47.2 × 34.7 × 2 cm (18 9/16 × 13 11/16 × 13/16 in.)

Fondation Custodia, Collection Frits Lugt, Paris, 6534/42

Cat. No. 39

**Balthasar van der Ast**

***Flower Still Life, c. 1630***

oil on panel

37.2 × 24.5 cm (14 5/8 × 9 5/8 in.)

framed: 52 × 40 × 4.1 cm (20 1/2 × 15 3/4 × 1 5/8 in.)

Rose-Marie and Eijk Van Otterloo Collection

Cat. No. 40

**Balthasar van der Ast**

***Two Shells, 1620-1630***

gouache, watercolor, and tempera on paper

overall size: 31.4 × 20.2 cm (12 3/8 × 7 15/16 in.)

framed: 47.2 × 34.7 × 2 cm (18 9/16 × 13 11/16 × 13/16 in.)

Fondation Custodia, Collection Frits Lugt, Paris, 6534/49

Cat. No. 41 R/V

**Cornelis van Poelenburch**

***Houses in Italy (recto), c. 1620-1625***

pen and brown ink and wash over black chalk on paper

18.7 × 23.2 cm (7 3/8 × 9 1/8 in.)

Private Collection

:

Cat. No. 42

**Jan van Goyen**

***The 'Haringpakkerstoren' in Amsterdam, c. 1651***

black chalk, gray wash, on paper

9.9 × 15.7 cm (3 7/8 × 6 3/16 in.)

Fondation Custodia, Collection Frits Lugt, Paris

Cat. No. 43

**Jan van Goyen**

***Sailing Ships, 1653***

black chalk, gray wash, on paper

sheet: 11.4 × 19.5 cm (4 1/2 × 7 11/16 in.)

framed: 32.8 × 52.8 × 3.2 cm (12 15/16 × 20 13/16 × 1 1/4 in.)

Royal Museums of Fine Arts of Belgium, Brussels

Cat. No. 44

**Jan van Goyen**

***Ships under a Cloudy Sky, 1655***

oil on panel

unframed: 32.5 × 32 cm (12 13/16 × 12 5/8 in.)

framed: 56.5 × 56 × 7 cm (22 1/4 × 22 1/16 × 2 3/4 in.)

Métropole Rouen Normandie, Musée des Beaux-Arts

Cat. No. 45

**Thomas de Keyser**

***Company of Allaert Cloeck, 1630***

pen and brown ink, violet wash, over black chalk, squared, on paper

20.4 × 40.9 cm (8 1/16 × 16 1/8 in.)

Albertina, Vienna

Cat. No. 46

**Thomas de Keyser**

***Officers and Other Civic Guardsmen of the Illrd District of Amsterdam, under the Command of Captain Allaert Cloeck and Lieutenant Lucas Jacobsz Rotgans, c. 1630***

pen and deep brown ink, grey brown wash over black chalk, squared, on paper

20.2 × 40.8 cm (7 15/16 × 16 1/16 in.)

Statens Museum for Kunst, Copenhagen

Cat. No. 47 / File Name: 3891-043.jpg

**Salomon de Bray**

***The Twins Clara and Albert de Bray, August 12, 1646***

red chalk, over faint indications in black chalk, on paper

sheet: 16 × 15.2 cm (6 5/16 × 6 in.)

framed: 56.2 × 43.5 × 3.81 cm (22 1/8 × 17 1/8 × 1 1/2 in.)

The Morgan Library & Museum, Purchased in 1909.





:  
Cat. No. 48 / File Name: 3891-042.jpg  
**Salomon de Bray**  
***The Twins Clara and Albert de Bray, 1646 or after***  
oil on canvas  
unframed: 82.6 × 64.8 cm (32 1/2 × 25 1/2 in.)  
framed: 84.5 × 102 × 8 cm (33 1/4 × 40 3/16 × 3 1/8 in.)  
National Galleries of Scotland, Long loan in 1995



Cat. No. 49  
**Pieter Jansz Saenredam**  
***Choir and High Altar of Sint-Janskerk at 's-Hertogenbosch, 1632***  
pen and brown ink with gray wash and watercolor, over black chalk on paper  
40.7 × 32 cm (16 × 12 5/8 in.)  
The British Museum, London

Cat. No. 50 / File Name: 3891-104.jpg  
**Pieter Jansz Saenredam**  
***The Choir of the St. Bavo in Haarlem,***  
oil on panel  
49 × 36.6 cm (19 5/16 × 14 7/16 in.)  
Fondation Custodia, Collection Frits Lugt, Paris



Cat. No. 51 / File Name: 3891-105.jpg  
**Pieter Jansz Saenredam**  
***St. Bavo, Haarlem, View in the Choir, 1636***  
pen and gray wash on paper  
48 × 37 cm (18 7/8 × 14 9/16 in.)  
Noord-Hollands Archief, Kennemer Atlas, Haarlem



Cat. No. 52  
**Pieter Jansz Saenredam**  
***St. Bavo, Haarlem, Part of the Nave, 1635***  
pen and chalk on blue paper  
54.5 × 39 cm (21 7/16 × 15 3/8 in.)  
Noord-Hollands Archief, Kennemer Atlas, Haarlem

Cat. No. 53  
**Pieter Jansz Saenredam**  
***South Transept of St. Bavo in Haarlem, 1635***  
pen and brush, gray wash, on paper  
sheet: 49 × 35.5 cm (19 5/16 × 14 in.)  
framed: 87 × 62 cm (34 1/4 × 24 7/16 in.)  
Noord-Hollands Archief, Kennemer Atlas, Haarlem

:

Cat. No. 54

**Pieter Jansz Saenredam**

***Interior of Saint Bavo's Church, Haarlem, 1635***

pen and brown ink with gray wash and touches of red chalk over graphite on paper

49.1 x 35.8 cm (19 5/16 x 14 1/8 in.)

National Gallery of Art, Washington, Gift of Dian Woodner

Cat. No. 55

**Pieter Jansz Saenredam**

***Organ of the St. Bavo, Haarlem,***

pen and brown ink, pencil and watercolor, on paper

30.9 x 17.3 cm (12 3/16 x 6 13/16 in.)

Fondation Custodia, Collection Frits Lugt, Paris

Cat. No. 56

**Bartholomeus Breenbergh**

***Reclining Male Nude (Study for "Venus Mourning the Death of Adonis"), 1646***

oiled charcoal and white chalk on blue antique laid paper

24.8 x 35.7 cm (9 3/4 x 14 1/16 in.)

Harvard Art Museums/Fogg Museum, Anonymous fund in honor of John and Anne Straus, and through the generosity of the Fifth Floor Foundation, Howard and Sally Lepow, Leena and Sheldon Peck, Maida and George Abrams and Kathryn and William W. Robinson

Cat. No. 57

**Bartholomeus Breenbergh**

***Venus Mourning the Death of Adonis, 1646***

oil on panel

unframed: 38.4 x 49.4 cm (15 1/8 x 19 7/16 in.)

framed: 54.5 x 65 cm (21 7/16 x 25 9/16 in.)

Harvard Art Museum/Fogg Museum, Kate, Murice R., and Melvin R. Seiden Special Purchase Fund, Janine Luke, The Louis Agassiz Shaw Bequest, and William and Ami Danoff in honor of Seymour Slive

Cat. No. 58

**Anthonie Palamedesz**

***Seated Officer Holding a Glass, c. 1635***

brush and brown ink and darker brown oil paint, slightly heightened with white gouache, on paper

20.5 x 15.5 cm (8 1/16 x 6 1/8 in.)

framed: 46.5 x 33.5 x 3 cm (18 5/16 x 13 3/16 x 1 3/16 in.)

Leiden University Library

Cat. No. 59

**Rembrandt van Rijn**

***Old Man Seated, 1631***

red and some black chalk on pale yellowish prepared paper

sheet: 22.9 x 15.9 cm (9 x 6 1/4 in.)

Private collection

Cat. No. 60 / File Name: 3891-095.jpg

**Rembrandt van Rijn**

***Joseph Telling His Dreams, 1633***

grisaille on paper

55.8 × 38.7 cm (21 15/16 × 15 1/4 in.)

Rijksmuseum, Amsterdam, purchased with the support of the Vereniging Rembrandt and the Stichting tot Bevordering van de Belangen van het Rijksmuseum



Cat. No. 65 / File Name: 3891-096.jpg

**Rembrandt van Rijn**

***Studies of Mary, the Mother of Christ, and Mary Magdalene, 1635-1636***

pen and brown ink, red chalk

sheet: 20.1 × 14.3 cm (7 15/16 × 5 5/8 in.)

Rijksmuseum, Amsterdam



Cat. No. 66

**Rembrandt van Rijn**

***The Rape of Ganymede, 1635***

pen and brown ink, brown wash, on paper

18.3 × 16 cm (7 3/16 × 6 5/16 in.)

Kupferstich-Kabinett, Staatliche Kunstsammlungen Dresden

Cat. No. 67

**Rembrandt van Rijn**

***Jan Cornelisz Sylvius, the Preacher, 1644***

pen and brown ink on laid paper

13.3 × 12.2 cm (5 1/4 × 4 13/16 in.)

National Gallery of Art, Washington, Rosenwald Collection

Cat. No. 68

**Cornelis Saftleven**

***Sleeping Hunter, 1642***

black chalk and gray wash on paper

16.9 × 23.8 cm (6 5/8 × 9 3/8 in.)

Maida and George Abrams Collection, Boston

Cat. No. 69

**Cornelis Saftleven and Herman Saftleven**

***Sleeping Hunter in a Landscape, 1642 or later***

oil on panel

36.8 × 52 cm (14 1/2 × 20 1/2 in.)

framed: 56 × 69.2 × 7.5 cm (22 1/16 × 27 1/4 × 2 15/16 in.)

Maida and George Abrams Collection, Boston

:

Cat. No. 70

**Jacob Andriaensz Backer**

***Seated Female Nude (Study for Venus), c. 1650***

black and white chalk on blue antique laid paper, double framing line in brown ink on paper  
32.3 × 23.2 cm (12 11/16 × 9 1/8 in.)

framed: 49.85 × 39.69 × 2.22 cm (19 5/8 × 15 5/8 × 7/8 in.)

The Madia and George Abrams Collection, Fogg Art Museum, Harvard University, Cambridge, Massachusetts, Gift of George S. Abrams in appreciation of William Robinson's services as Curator of Drawings, 1988-2013

Cat. No. 71

**Jacob Andriaensz Backer**

***Seated Female Nude, 1648***

black and white chalk on blue paper

28.8 × 22.8 cm (11 5/16 × 9 in.)

Maida and George Abrams Collection, Boston

Cat. No. 72

**Adriaen van Ostade**

***Dancing Man, c. 1659***

black and white chalk on light brown paper

14.4 × 7.5 cm (5 11/16 × 2 15/16 in.)

Rijksmuseum, Amsterdam, purchased with the support of the F.G. Waller-Fonds, the Belport Familienstiftung and a contribution from the J.A.Z. Count van Regteren Limpurg Bequest

Cat. No. 73

**Adriaen van Ostade**

***Peasants Dancing in a Tavern, 1659***

oil on panel

unframed: 44.1 × 60.3 cm (17 3/8 × 23 3/4 in.)

framed: 72.7 × 87.3 × 7.3 cm (28 5/8 × 34 3/8 × 2 7/8 in.)

Saint Louis Art Museum, Friends Fund

Cat. No. 74

**Adriaen van Ostade**

***Dancing Figures, c. 1659***

black chalk, pen and brown ink, on paper

13.2 × 26.7 cm (5 3/16 × 10 1/2 in.)

Hamburger Kunsthalle, Kupferstichkabinett

Cat. No. 75

**Adriaen van Ostade**

***Seated Man from Behind, c. 1659***

black chalk, heightened with white, on light brown paper

20 × 19.2 cm (7 7/8 × 7 9/16 in.)

Rijksmuseum, Amsterdam

:

Cat. No. 76

**Adriaen van Ostade**

***Drawing for a Group Portrait, c. 1654***

pen and brown ink over graphite, gray-brown wash, on paper

12.2 × 23.2 cm (4 13/16 × 9 1/8 in.)

Fondation Custodia, Collection Frits Lugt, Paris

Cat. No. 77

**Adriaen van Ostade**

***Drawing for a Group Portrait, c. 1654***

pen and brown ink over graphite, gray-brown wash, on paper

12.6 × 21.3 cm (4 15/16 × 8 3/8 in.)

Fondation Custodia, Collection Frits Lugt, Paris

Cat. No. 78

**Adriaen van Ostade**

***Drawing for a Group Portrait, c. 1654***

pen and brown ink over graphite, gray-brown wash, on paper

16 × 20.1 cm (6 5/16 × 7 15/16 in.)

Fondation Custodia, Collection Frits Lugt, Paris

Cat. No. 79

**Hendrik Cornelisz van Vliet**

***Sketchbook,***

black, white and red chalk on nineteen leaves of blue paper

27.5 × 22 cm (10 13/16 × 8 11/16 in.)

Museum Boijmans Van Beuningen, Rotterdam

Cat. No. 80

**Govaert Flinck**

***Standing Man beside a Table, 1644- before 1646***

black chalk, heightened with white, on blue paper

39.2 × 24 cm (15 7/16 × 9 7/16 in.)

Rijksmuseum, Amsterdam, purchased with the support of the Vereniging Rembrandt

Cat. No. 81

**Aelbert Cuyp**

***Landscape with Herdsmen, c. 1650-1652***

oil on panel

48 × 82.5 cm (18 7/8 × 32 1/2 in.)

National Gallery of Art, Washington, Corcoran Collection, (William A. Clark Collection)

Cat. No. 82

**Aelbert Cuyp**

***Calcar with Monterberg in the Distance, early 1640s***

black chalk, gray wash, green and ochre yellow watercolor, partly brushed with gum arabic, on paper

18.5 × 49.5 cm (7 5/16 × 19 1/2 in.)

Lent by The Metropolitan Museum of Art, New York, From the Collection of Rita and Frits

Markus, Bequest of Rita Markus, 2005

:

Cat. No. 83

**Aelbert Cuyp**

***The Rhine Valley Stretching North toward the Elterberg, c. 1652-1655***

black chalk, gray wash, pencil on paper

14.9 x 23.9 cm (5 7/8 x 9 7/16 in.)

Fondation Custodia, Collection Frits Lugt, Paris, 5304

Cat. No. 84

**Aelbert Cuyp**

***Three Boys in a Landscape, early 1640s***

black chalk, gray wash on paper

14.7 x 19.1 cm (5 13/16 x 7 1/2 in.)

Rijksmuseum, Amsterdam

Cat. No. 85

**Aelbert Cuyp**

***Standing Herdsman with Staff, c. 1642-1646***

black chalk, gray wash on two pieces of paper

19.1 x 9.6 cm (7 1/2 x 3 3/4 in.)

mount: 37.4 x 23.1 cm (14 3/4 x 9 1/8 in.)

Private Collection

Cat. No. 86

**Aelbert Cuyp**

***A Cow Lying Down, c. 1650***

black chalk, gray wash, on paper

7.6 x 13.3 cm (3 x 5 1/4 in.)

Private Collection

Cat. No. 87

**Aelbert Cuyp**

***Studies of a Cow and a Horse, c. 1650***

black chalk, brush in gray wash, traces of pencil on paper

8.4 x 12.5 cm (3 5/16 x 4 15/16 in.)

Fondation Custodia, Collection Frits Lugt, Paris, 458

Cat. No. 88

**Karel Dujardin**

***Walking Man Seen from Behind, c. 1655***

red chalk on paper

23.6 x 13.5 cm (9 5/16 x 5 5/16 in.)

Statens Museum for Kunst, Copenhagen

Cat. No. 89

**Gerbrand van den Eeckhout**

***David Promises Bathsheba to Designate Solomon as His Successor (David's Promise to Bathsheba), 1642-1643***

brown ink and brown wash, over red and black chalk on paper

18.8 x 27 cm (7 3/8 x 10 5/8 in.)

Lent by The Metropolitan Museum of Art, Gift of Robert Lehman, 1941

:

Cat. No. 90

**Gerbrand van den Eeckhout**

***Seated Oriental, before 1646***

black and white chalk on gray paper

38.9 × 26.2 cm (15 5/16 × 10 5/16 in.)

Hamburger Kunsthalle, Kupferstichkabinett

Cat. No. 91

**Gerbrand van den Eeckhout**

***Jacob's Dream,***

red chalk on paper

26.2 × 20 cm (10 5/16 × 7 7/8 in.)

Albertina, Vienna

Cat. No. 92

**Gerbrand van den Eeckhout**

***Jacob's Dream, 1672***

black chalk on paper

22.4 × 19.6 cm (8 13/16 × 7 11/16 in.)

Staatliches Museum Schwerin/ Ludwiglust/ Güstrow

Cat. No. 93

**Isack van Ostade**

***The Schoolroom, c. 1639***

pen and brown ink, pinkish brown and gray wash, over black chalk or graphite, on paper

16.9 × 23.6 cm (6 5/8 × 9 5/16 in.)

Maida and George Abrams Collection, Boston

Cat. No. 94

**Isack van Ostade**

***Group of Houses with a Church Tower in the Background, c. 1649***

pen and brown ink, black chalk or graphite, brown and gray wash, black and colored chalks, watercolor

sheet: 29.9 × 24.4 cm (11 3/4 × 9 5/8 in.)

Staatliche Museen zu Berlin, Kupferstichkabinett

Cat. No. 95

**Paulus Potter**

***A Sow and Her Farrow, c. 1650***

black chalk on paper

10.2 × 14.9 cm (4 × 5 7/8 in.)

Maida and George Abrams Collection, Boston

Cat. No. 96

**Jan de Bray**

***Double Portrait of Abraham Casteleyn and Margarieta van Bancken, 1663***

pen and brown ink, gray wash, on paper

10.2 × 20.3 cm (4 × 8 in.)

Fondation Custodia, Collection Frits Lugt, Paris, 5124

:

Cat. No. 97

**Baerend Graat**

***Seated Man, 1659/1660***

black and white chalk on blue paper (faded to gray), lined  
22.9 × 17.9 cm (9 × 7 1/16 in.)

Fondation Custodia, Collection Frits Lugt, Paris

Cat. No. 98

**Jacob van Ruisdael**

***Landscape with the Ruins of the Church of Muiderberg in the Distance, c. 1650-1655***

black chalk on paper  
15.1 × 19.3 cm (5 15/16 × 7 5/8 in.)

Albertina, Vienna

Cat. No. 99 / File Name: 3891-100.jpg

**Jacob van Ruisdael**

***View over Amsterdam and the IJ, c. 1665***

black chalk, gray wash, on paper  
8.6 × 15.2 cm (3 3/8 × 6 in.)

Rijksmuseum, Amsterdam



Cat. No. 100

**Jacob van Ruisdael**

***Panoramic View of Amsterdam, Its Harbor, and the IJ, c. 1665-1670***

oil on canvas  
41.5 × 40.7 cm (16 5/16 × 16 in.)  
framed: 61.7 x 60.6 x 9.5 cm (24 5/16 x 23 7/8 x 3 3/4 in.)

Private Collection, England (on loan to The National Gallery, London)

Cat. No. 101

**Jacob van Ruisdael**

***The Jewish Cemetery at Ouderkerk aan de Amstel,***

black chalk, brush and black ink, gray wash, on paper  
19.1 × 28.3 cm (7 1/2 × 11 1/8 in.)

Teylers Museum, Haarlem

Cat. No. 102

**Ludolf Backhuysen**

***View of the Montelbaenstoren, c. 1685***

pen and brown ink with gray wash on paper  
unframed: 17 × 26.6 cm (6 11/16 × 10 1/2 in.)

Amsterdam City Archives

Cat. No. 103

**Cornelis Bega**

***Peasant Woman, Turned Three-Quarters to the Left, Holding a Glass, 1638-1698***

red chalk on paper  
overall: 24.7 × 14.6 cm (9 3/4 × 5 3/4 in.)  
framed: 60.6 × 45.3 × 3.1 cm (23 7/8 × 17 13/16 × 1 1/4 in.)

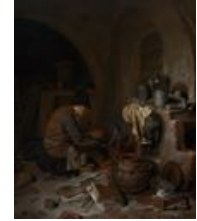
The Samuel Courtauld Trust, The Courtauld Gallery, London



:

Cat. No. 104  
**Cornelis Bega**  
***The Alchemist, c. 1663***  
black chalk with white heightening on blue paper  
17.3 × 14.2 cm (6 13/16 × 5 9/16 in.)  
Museum Mayer van Bergh, Antwerp

Cat. No. 105 / File Name: 3891-007.jpg  
**Cornelis Bega**  
***The Alchemist, 1663***  
oil on canvas mounted on panel  
35 × 28.6 cm (13 3/4 × 11 1/4 in.)  
National Gallery of Art, Washington, From the Collection of Ethel and Martin Wunsch, 2013.34.1



Cat. No. 106  
**Willem van de Velde the Younger**  
***The Surrender of the Royal Prince on the Third Day of the Four Days' Battle, June 13, 1666, c. 1670***  
oil on canvas  
35.2 × 45.3 cm (13 7/8 × 17 13/16 in.)  
Fondation Custodia, Collection Frits Lugt, Paris

Cat. No. 107  
**Willem van de Velde the Younger**  
***The Surrender of The Royal Prince on the Third Day of the Four Days' Battle, June 13, 1666, c. 1666(?)***  
pencil and gray wash on paper  
21 × 43.2 cm (8 1/4 × 17 in.)  
National Maritime Museum, Greenwich, London

Cat. No. 110  
**Willem van de Velde the Younger**  
***Burning of The Royal James at the Battle of Solebay, June 7, 1672, 1673(?)***  
gray wash, graphite, on paper  
44.3 × 63.4 cm (17 7/16 × 24 15/16 in.)  
National Maritime Museum, Greenwich, London

Cat. No. 111  
**Nicolaes Maes**  
***The Lacemaker, 1655***  
oil on panel  
57.1 × 43.8 cm (22 1/2 × 17 1/4 in.)  
framed: 78.1 × 64.7 × 7.4 cm (30 3/4 × 25 1/2 × 2 15/16 in.)  
National Gallery of Canada, Ottawa, Purchased 1954

:

Cat. No. 112  
**Nicolaes Maes**  
***Interior with Young Woman Making Lace, 1650s***  
pen and brown ink, brown wash, on paper  
sheet: 8 × 6.4 cm (3 1/8 × 2 1/2 in.)  
Staatliche Museen zu Berlin, Kupferstichkabinett

Cat. No. 113  
**Nicolaes Maes**  
***Seated Woman Making Lace, c. 1654-1655***  
red chalk on paper  
14.1 × 11.9 cm (5 9/16 × 4 11/16 in.)  
Museum Boijmans Van Beuningen, Rotterdam

Cat. No. 114  
**Frans van Mieris**  
***Sleeping Spaniel, c. 1665-1670***  
black chalk on paper  
7.1 × 9.3 cm (2 13/16 × 3 11/16 in.)  
Private Collection

Cat. No. 115  
**Adriaen van de Velde**  
***Study after a Male Model,***  
red chalk on paper  
34.9 × 22.9 cm (13 3/4 × 9 in.)  
Private Collection

Cat. No. 116  
**Adriaen van de Velde**  
***Landscape with Trees, 1660-1669***  
pen and brown ink, brown and gray-brown wash, on two sheets of paper joined vertically at left  
sheet: 28.5 × 45.6 cm (11 1/4 × 17 15/16 in.)  
framed: 45.1 × 62.7 × 2.8 cm (17 3/4 × 24 11/16 × 1 1/8 in.)  
Amsterdam Museum, legacy C.J. Fodor

Cat. No. 117  
**Adriaen van de Velde**  
***Kneeling Woman, c. 1660(?)***  
red chalk over black chalk on paper  
23.2 × 19 cm (9 1/8 × 7 1/2 in.)  
Maida and George Abrams Collection, Boston

Cat. No. 118 / File Name: 3891-015.jpg  
**Gerrit Berckheyde**  
***The Grote Kerk or St. Bavokerk in Haarlem, 1666***  
oil on panel  
60.3 × 84.5 cm (23 3/4 × 33 1/4 in.)  
Otto Naumann Ltd, New York



:

Cat. No. 119 / File Name: 3891-036.jpg  
**Gerrit Adriaensz Berckheyde**  
***View of the Nieuwezijds Voorburgwal in Amsterdam,***  
graphite, pen, and brown ink on paper  
16.9 × 27.6 cm (6 5/8 × 10 7/8 in.)  
Koninklijk Oudheidkundig Genootschap, Amsterdam



Cat. No. 120  
**Gerrit Berckheyde**  
***The Nieuwezijds Voorburgwal with the Flower and Tree Market in Amsterdam, c. 1675***  
oil on wood  
36.8 × 47.6 cm (14 1/2 × 18 3/4 in.)  
framed: 60.3 × 68.6 × 8.9 cm (23 3/4 × 27 × 3 1/2 in.)  
Los Angeles County Museum of Art, Gift of Mrs. Edward W. Carter, M.2009.106.1

Cat. No. 122  
**Gerrit Adriaensz Berckheyde**  
***View on the Herengracht from the Vijzelstraat in Amsterdam, c. 1671-1672***  
graphite, gray wash on paper  
20.8 × 39.5 cm (8 3/16 × 15 9/16 in.)  
Amsterdam City Archives

Cat. No. 123  
**Gerrit Adriaensz Berckheyde**  
***Walking Boy with a Basket, 1670s***  
black chalk on paper  
19 × 10.9 cm (7 1/2 × 4 5/16 in.)  
Rijksmuseum, Amsterdam, purchased with the support of the Vereniging Rembrandt

Cat. No. 124  
**Gerrit Adriaensz Berckheyde**  
***Seated Man, Drinking,***  
red chalk on paper  
13.3 × 16.8 cm (5 1/4 × 6 5/8 in.)  
Rijksmuseum, Amsterdam, purchased with the support of the Vereniging Rembrandt, with additional funding from the Prins Bernhard Fonds, the Rijksmuseum-Stichting and the Ster Holding BV

Cat. No. 125  
**Gerrit Adriaensz Berckheyde**  
***Standing Woman,***  
red chalk on paper  
27.1 × 14.4 cm (10 11/16 × 5 11/16 in.)  
Fondation Custodia, Collection Frits Lugt, Paris, 5112

:

Cat. No. 126

**Pieter Cornelisz. van Slingelandt**

***Study of a Cradle,***

black and white chalk on blue paper

unframed: 18.3 × 19.1 cm (7 3/16 × 7 1/2 in.)

framed: 34.7 × 47.2 × 2 cm (13 11/16 × 18 9/16 × 13/16 in.)

Fondation Custodia, Collection Frits Lugt, Paris

Cat. No. 127

**Pieter Cornelisz. van Slingelandt**

***Interior with a Woman by a Cradle, c. 1670***

oil on panel

45.6 × 38.6 cm (17 15/16 × 15 3/16 in.)

Bayerische Staatsgemäldesammlungen, Alte Pinakothek, München

**Pieter Jansz Saenredam**

***Cathedral of Saint John at 's-Hertogenbosch, 1646***

oil on panel

128.9 × 87 cm (50 3/4 × 34 1/4 in.)

National Gallery of Art, Washington, Samuel H. Kress Collection

**Caspar Netscher**

***A Woman Feeding a Parrot, with a Page, 1666***

oil on panel

unframed: 46 × 37 cm (18 1/8 × 14 9/16 in.)

Richard Green Gallery, London

**Caspar Netscher**

***Young Woman with a Parrot, 1666***

pen and brown ink with brown wash over black chalk on paper

sheet: 24.3 × 18.5 cm (9 9/16 × 7 5/16 in.)

framed: 60.3 × 45.1 cm (23 3/4 × 17 3/4 in.)

The British Museum, London