

West Building

Main Floor

1-13	13th- to 16th-Century Italian	52	18th- and 19th-Century Spanish
17-28	16th-Century Italian, French, and Spanish	53-56	18th- and Early 19th-Century French
29-34, 36-37	17th- to 18th-Century Italian, Spanish, and French	57-59, 61	British
35-35A, 38-41A	15th- to 16th-Century Netherlandish and German	60-60B, 62-71	American
42-51	17th-Century Dutch and Flemish	80-93	19th-Century French
		72-79	Special Exhibitions

Ground Floor

G1-G9, G21	19th- and 20th-Century Sculptures	G23-G29	Prints and Drawings
G11-G13A	17th- and 18th-Century Sculptures and Decorative Arts	G30-G34	Photographs
G10, G14-19	Medieval, Renaissance, and Baroque Sculptures and Decorative Arts	G39-G43	American Decorative Arts and Paintings
G22-G22A	Photographs/Prints and Drawings		Public Space
			Closed to the Public

East Building

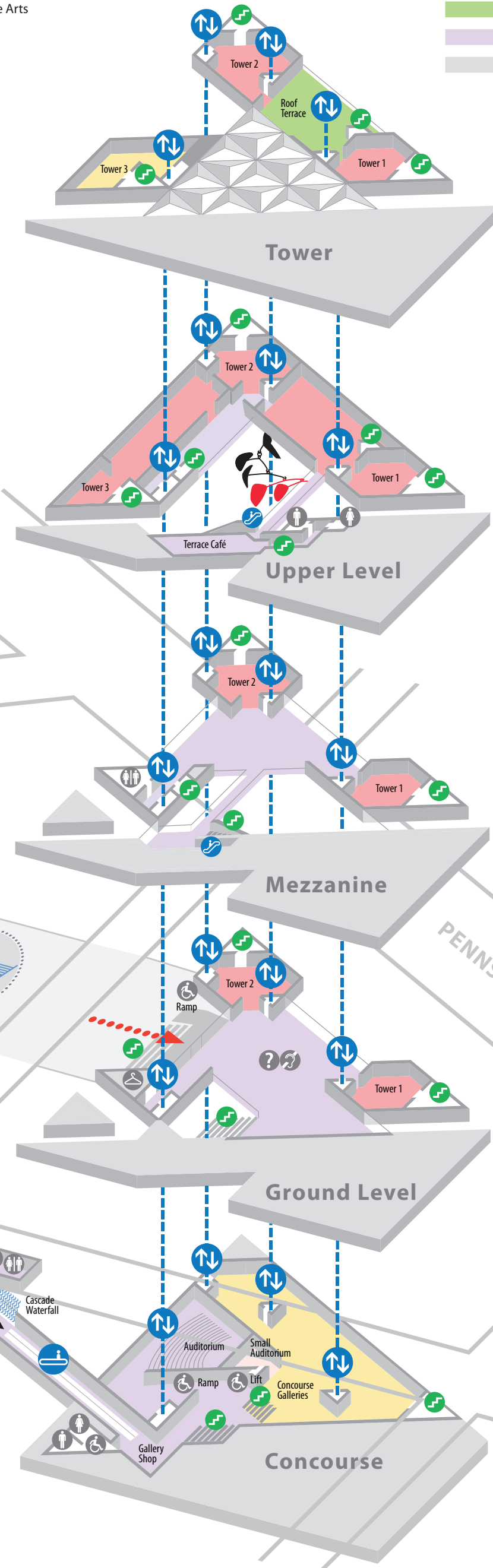
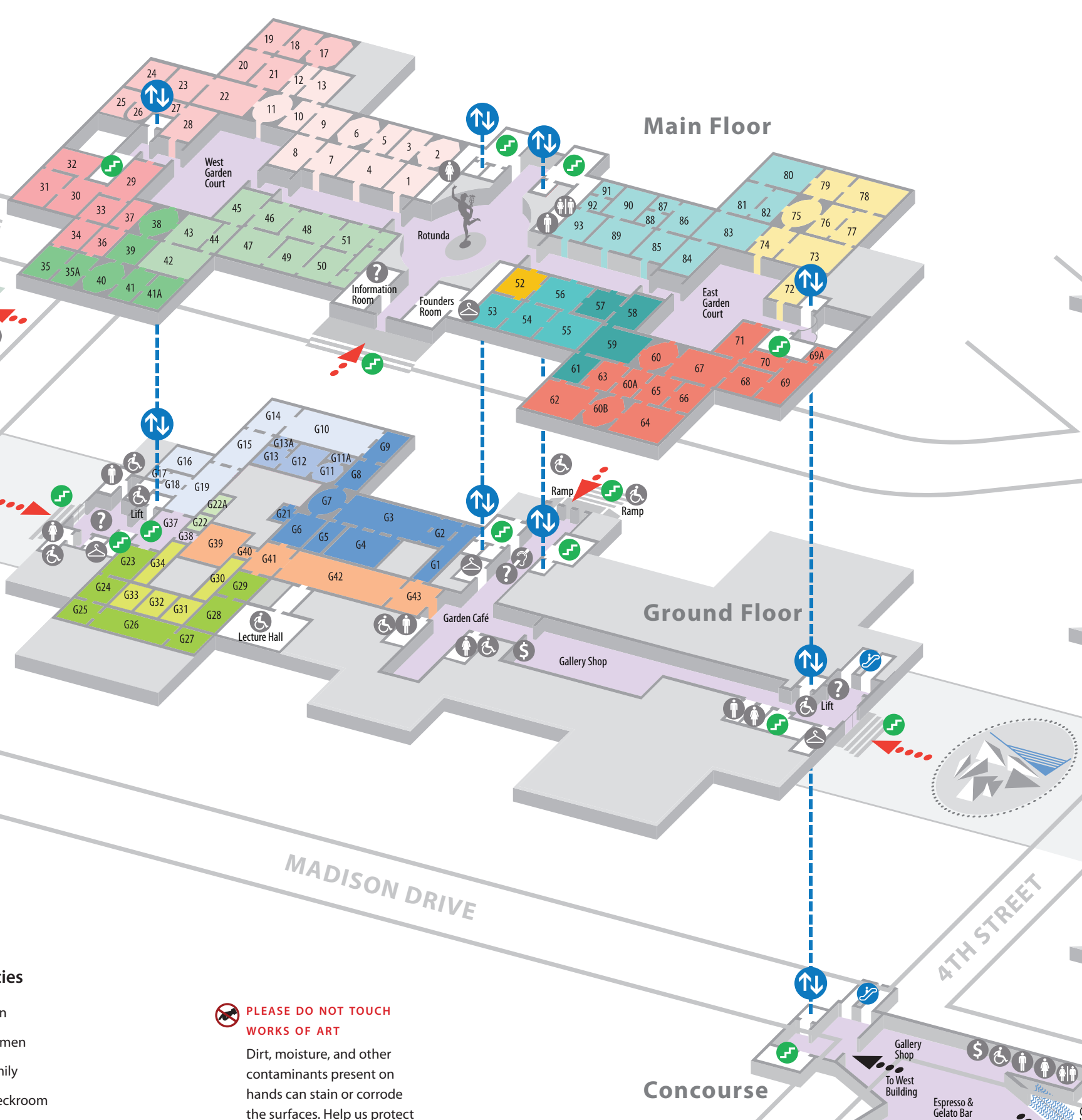
	Modern and Contemporary Art
	Special Exhibitions
	Roof Terrace
	Public Space
	Closed to the Public



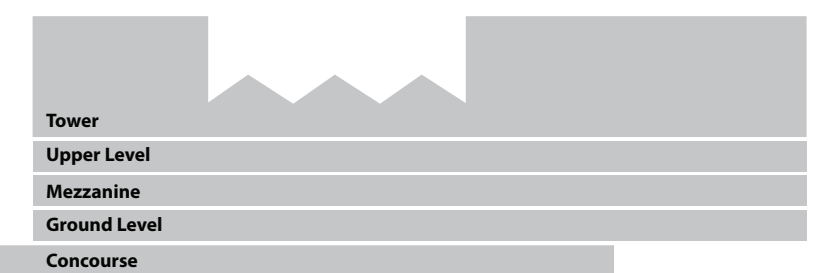
Facilities

- Men
- Women
- Family
- Checkroom
- Information
- Listening Device
- ATM
- Accessible
- Elevator
- Escalator
- Moving Walkway
- Stairs
- Exterior Entrance

PLEASE DO NOT TOUCH WORKS OF ART
Dirt, moisture, and other contaminants present on hands can stain or corrode the surfaces. Help us protect the works of art and preserve our common heritage for future generations.



West Building



East Building